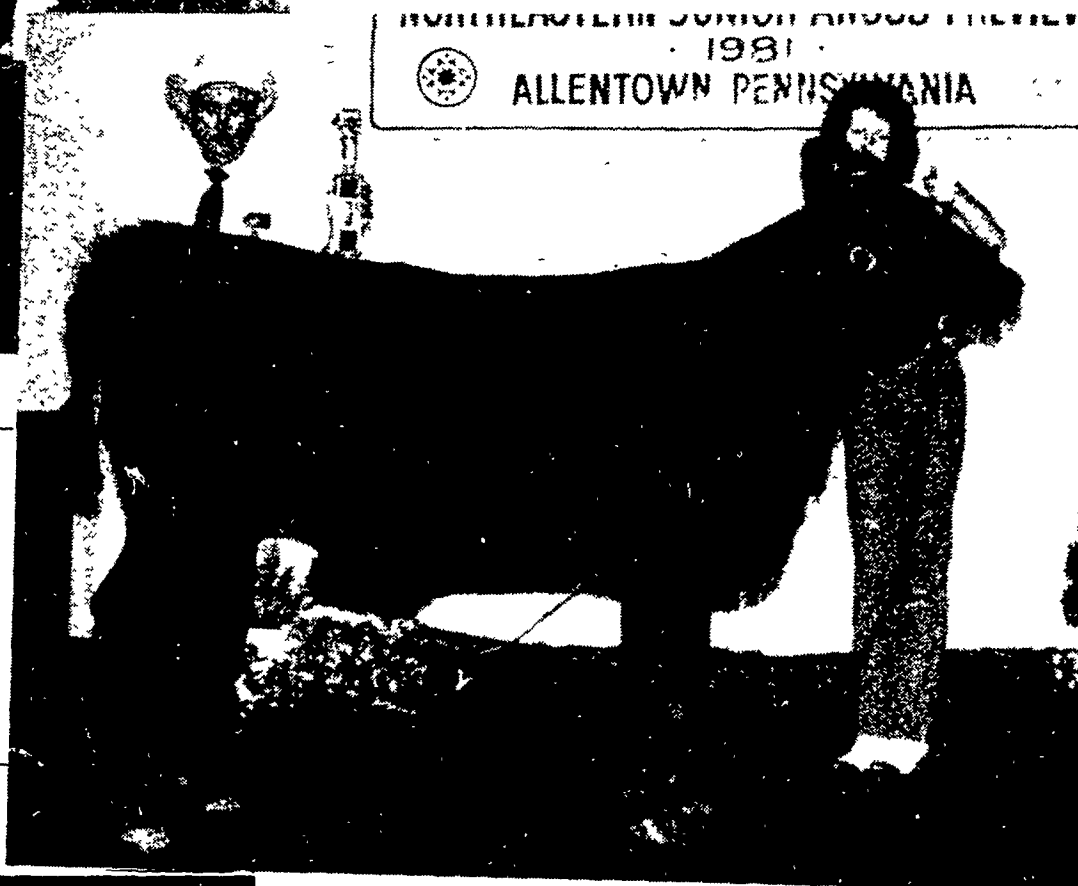




Gregory Untied, a cowboy for Ira Bogg's Farm in Claverack, N.Y. exhibited the grand champion Angus heifer, who was also tagged junior champion. Untied also exhibited the reserve junior champion who followed in her stablemate's shadow and was tagged reserve grand champion of the 2nd Northeastern Junior Angus Preview.



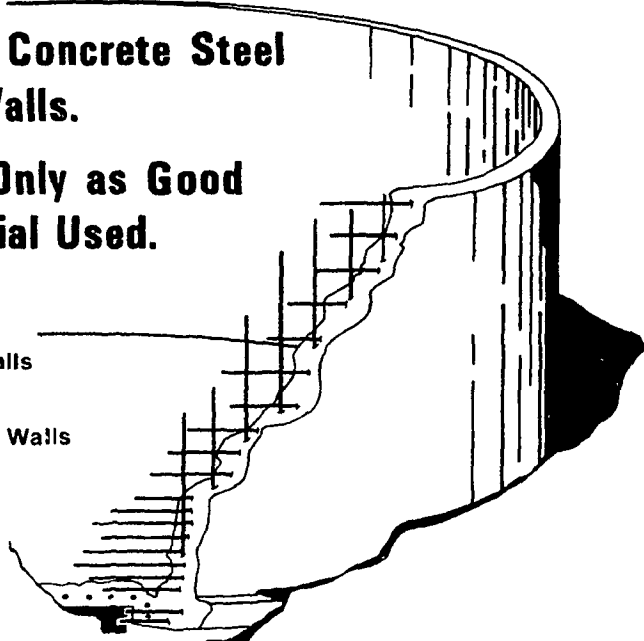
Monique Sweigard, Halifax, managed to show her 'energetic' Angus heifer to Judge White, who tagged the sometimes unruly heifer Intermediate Champion. Monique and her stage-struck champ pose for the camera.

## THE STRENGTH IS IN THE CONSTRUCTION

■ Poured Solid Concrete Steel Reinforced Walls.

■ The Wall is Only as Good as the Material Used.

- Manure Pit Walls
- Hog House Walls
- Chicken House Walls
- Concrete Decks
- House Foundation Walls
- Cistern Walls
- Barnyard Walls
- Concrete Pit Tops
- Silage Pit Walls
- Retaining Walls



All sizes available  
Round or rectangular

Take the questions out of your new construction  
Call: **Balmer Bros.** for quality engineered walls.

*Invest in Quality - It will last a lifetime.*

**Balmer Bros.**

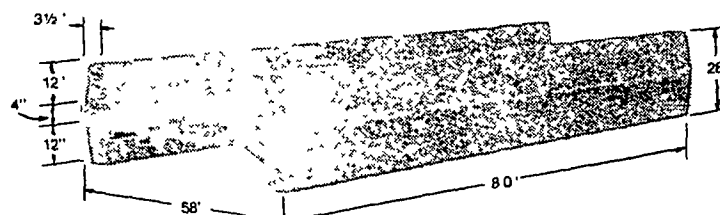
CONCRETE WORK, INC.

410 Main St. • Akron, PA 17501 • (717) 859-2074 or 733-9196

SOLLENBERGER SILO & EQUIPMENT CO.

Check Our  
Products & Service  
Before You Buy

### CONCRETE "H" TYPE FEED BUNKS



Approximate weight 4000 lbs

Featuring...

- Large Capacity
- Steel Reinforced
- Movable — for future expansion
- Strong enough to support a roof and feeder
- No corners to retain spoiled feed

#### INSTALLATION OF BUNKS

We have the necessary equipment to handle and install these heavy bunks. Customer shall make roadway to feed lot passable for our delivery truck.

— ALSO AVAILABLE —  
**NEW J TYPE FEED BUNKS**

5790 Sunset Pike, Chambersburg, PA

**717-264-9588**