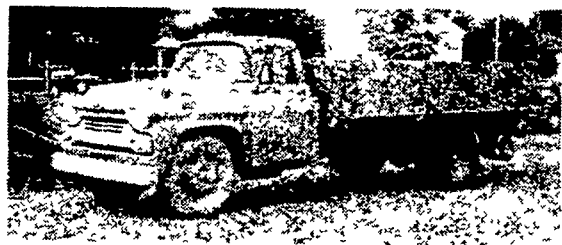
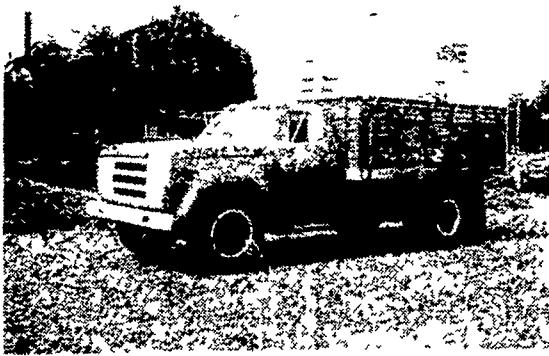


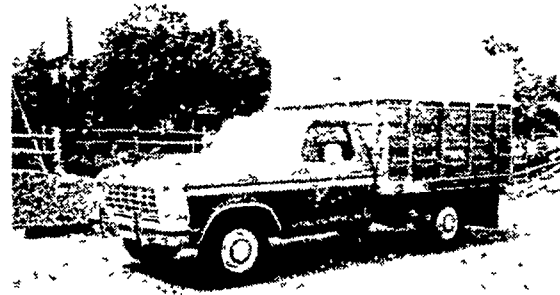
USED GRAIN TRUCKS



1958 CHEVY
21,000 GVW, V8, 4+2, 69,000 miles w/14 ft Midwest Grain Dump Body.

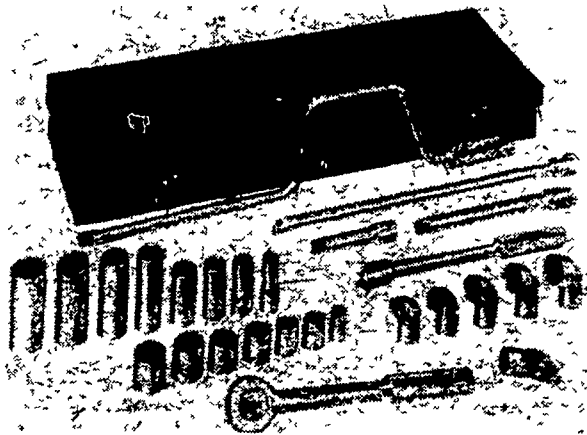


1974 DODGE D500
18,500 GVW, V8, 5 Speed, 6 New 9.00x20 Tires Truck has been reconditioned by us and is ready to go to work, with New Omaha Standard 12 ft Grain Body, Steel Floor, 40" Steel Sides, 26" Cattle Fold Down Racks, Omaha 51DA Single Cylinder 10 Ton Hoist, New-30 gal Aux. fuel tank, New 24" Tool Box **\$8500⁰⁰**



1979 FORD F250
7900 GVW, 400 V8, 4 Speed, 9.50x16 5 Tires, 13,000 Miles, With New Omaha Standard 9 ft Grain Body, Wood Floor, 40" Steel Sides, 26" Cattle Fold Down Racks, Omaha 41DA Single Cylinder 4 Ton Hoist **\$8250⁰⁰**

Other Used Grain Trucks In Stock



S-K TOOLS 3/8" DRIVE SOCKET SET

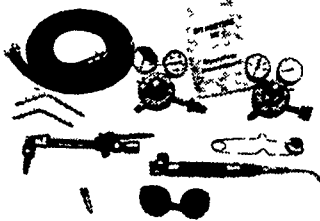
General Purpose Set, No. 4527, 27 piece plus box

Reg. 114.99
SPECIAL \$89⁹⁵

HEAVY DUTY COMBINATION WELDING & CUTTING OUTFIT

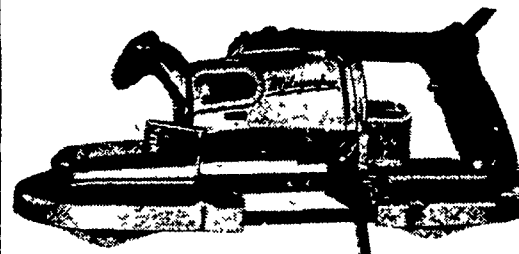
NOW SAVE \$ 30.00

CENTURY Was \$239.50
NOW \$209.50



- CUTS TO 3" THICK
- OPERATES ON BOTH L.P GAS AND ACETYLENE
- HEAVY DUTY BRASS REGULATORS
- INCLUDES STRIKER GOGGLES AND SIMPLIFIED INSTRUCTIONS

113-005-000 Heavy Duty Outfit



MILWAUKEE HEAVY-DUTY PORTABLE ELECTRIC BAND SAW

- 2 SPEED 200 and 250 surface ft. per min.
- Gear drive mechanism is lubricated with grease — no oiling required!
- Precision Needle Bearing Blade Guide
- Ideal for sawing PVC tubing
- Front T-Handle for better control
- Uses Standard 44-7/8" x 1/2" x .020 Band Saw Blades

Model 6226 With Carrying Case **\$373⁰⁰**

USED OLIVER TRACTOR PARTS

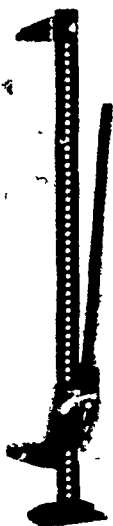
NOTE: We Have A Good Selection Of Used Oliver Tractor Parts For The Following Models: 55, 66, 77, 88, 1600 Call and Check With Paul Weaver We Will Ship UPS

- 1 - 155-897A Reconditioned Crankshaft with NEW Bearings, .010 Rods - .020 Mains, Fits - 16550, 1750G, 1755G, 1800G
- 1 - K-119D Reconditioned Crankshaft with NEW Bearings, .010 Rods - .010 Mains, Fits - Super 88 & 880 Gas or Diesel
- 1 - 30-307-8663 Reconditioned Crankshaft with New Bearings, .010 Rods - .020 Mains, Fits - 1750D, 1755D, 1800D, 1850G, 1855 G&D, 1950, 1955
- 1 - 166-425A Reconditioned Engine Block, Fits - 1655D
- 1 - Wide Front End - Rebuilt, Fits - 1550 - 1955
- 1 - Rebuilt 55 Gas Engine, Complete
- 1 - 770 Gas Engine, 1100 Hours, Complete

RECONDITIONED USED ROTARY MOWERS

- Vormado Rotary Mower, 3 H P 20" Push .. **\$50.00**
- White Rotary Mower, 990-071, 3 H.P., 20" Push .. **\$75.00**
- Lawn-Boy Rotary Mower, 8229A 21" Self-Propelled, Side Bagger .. **\$175.00**
- Bolens Rotary Mower, 8545, 4 H.P., 22" Self-Propelled, Electric Start, Mulching Mower .. **\$175.00**
- Lawn-Boy Rotary Mower, 7268, 21" Push, Side Discharge .. **\$195.00**
- Bolens Rotary Mower, 8554, 5 H.P., 22" Self-Propelled, Mulching Mower .. **\$200.00**
- Jacobsen Rotary Mower, 42171, 4 H.P. 21" Self-Propelled, Side Bagger .. **\$200.00**
- Lawn-Boy Rotary Mower, 8233, 21" Self-Propelled, Rear Bagger .. **\$225.00**
- Bolens Rotary Mower, 8554, 5 H.P. 22" Self-Propelled, Mulching Mower .. **\$225.00**
- Bolens Rotary Mower, 8644, 4 H.P. 22" Self-Propelled, Mulching Mower .. **\$300.00**
- White Rotary Mower, 990-142, 4 H.P., 22" Self-Propelled, Rear Bagger .. **\$325.00**
- Bolens Rotary Mower, 8648, 4 H.P. 22" Self-Propelled, Mulching Mower .. **\$325.00**

AMERICAN



PUSH-PULL JACK MODEL 1400

8000 lbs. CAPACITY
A versatile Tool (with the flick of a lever) That will lift, push, or pull 4 Tons. Safety designed pins that bend when jack is overloaded are used instead of shear type pins that break off and drop load. Made of malleable iron castings, not stampings used by others. Great for cable, wire and belt tension jack, farm use, pole maintenance jack, construction and maintenance.

List Price \$61.05
OUR PRICE \$49⁹⁵

CRC

5-56
PENETRATES
and LUBRICATES,
CLEANS, FIGHTS
RUST and DRIVES
OUR MOISTURE



- Penetrates deep through rust and corrosion — no more struggling with rusted nuts and bolts.
- Lubricates with long-lasting uniform film.
- Drives moisture out of wet ignition systems to help start wet engines

12 oz. can **\$2.69^{ea}**
\$24.21 per case of 12

ECHO

ECHO TRIMMER MODEL GT 200

- 21 CC Engine
- Tap For Cord Trimmer Head
- Flex-Drive Shaft

Reg. \$139.95

SALE PRICE **\$109⁹⁵**
Set Up & Tested

USED DIESEL COMPACT TRACTORS

- Kubota B7100DT - 16 hp., 4 wd, Ag tires, 325 Hours, with Woods 48" Undermount Rotary Mower **\$4800**
- Kubota L185 - 18 hp., 2 wd, Turf Tires, 280 Hours, with Woods 60" Undermount Rotary Mower **\$5000**
- Kubota L225 - 24 hp., 2 wd., Turf Tires, 1225 Hours, with New Woods 72" Undermount Rotary Mower **\$5000**
- Bolens G-192 - 19 hp., 2 wd, Turf Tires, 60 Hours, with Bolens 54" Undermount Rotary Mower **\$5000**

OLIVER 1855 DIESEL TRACTOR

Serial #228284

This tractor has been completely rebuilt by us and has a new 1855 repower engine and New Tires: 18.4x38 Goodrich Radials

WHITE 378 REAR MOUNTED 4 ROW CROP CULTIVATOR

Vibra Tine Shanks, Two Spring Cushion Rolling Fins

\$1900⁰⁰

FARMERSVILLE EQUIPMENT INC.

WHITE - BRILLION -
BUSH HOG - FOX -
VICON - KUBOTA -
BOLENS - HOMELITE -
ECHO - OMAHA -
STANDARD - HARSH

RD 4, East Farmersville Road, Ephrata, PA 17522
Located in the Village of Farmersville, Lancaster County
717-354-4271

★ CLOSED ★
★ SATURDAY ★
★ JULY 4 ★

Hours: Mon., Tues., Wed. & Fri.
7:30 A.M. to 5:30 P.M.
Thurs. to 9 P.M., Sat. till 3 P.M.