

# Soya Bluebook available

ST. LOUIS — Need information about soybeans or the soybean industry? The American Soybean Association's 1981 Soya Bluebook has the answers.

The 188-page directory and buyer's guide has up-to-date information on the state of the industry including listings of manufacturers, organizations and industries that provide products and services for soybean buyers and users. In addition, there is a complete section of statistics on soybean production, exports and usage.

Four easy-to-use sections of the handy directory are designed to aid in locating pertinent information. Included are:

— Organizations — a listing of organizations involved in soybean research, market expansion, production and utilization.

— Directory — a worldwide listing of soybean processors, soy oil refiners, soy food manufacturers and industrial product manufacturers. Includes key personnel and products manufactured.

— Buyers Guide — a full listing

of companies providing equipment or services for the soybean industry.

— Statistics — Maps, tables and charts provide up-to-date information on reported production, acreage, export statistics and crop values. In addition, there's a glossary of soybean terms and grading standards.

An expanded index of the 1981 Soya Bluebook is an aid to cross-

referencing all listings.

For more information write: General Sales, American Soybean Association, P.O. Box 27300, St. Louis, Missouri, 63141, USA.

PRICE: \$25 for the first copy and \$15 for each additional copy ordered at the same time.



**Suggested Readings**

MEMO

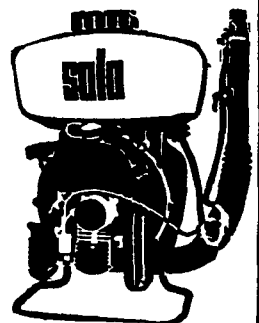
**HAY, STRAW & EAR CORN SALE**

**EVERY MONDAY AT 11 A.M.**

NEW HOLLAND SALES STABLES, INC.  
Phone 717-354-4341  
Lloyd H. Kreider, Auctioneer



Let Us Know Your Service Problems  
**HOOVER DIESEL SERVICE**  
PH: 717-656-6133  
2998 West Newport Rd  
Ronks, PA 17572



**SOLO 410/423**  
3 HP & 5 HP  
Models Available

spraying distance up to 35 ft. adaptable for dust, liquid, granuals

Ideal for tobacco sucker control

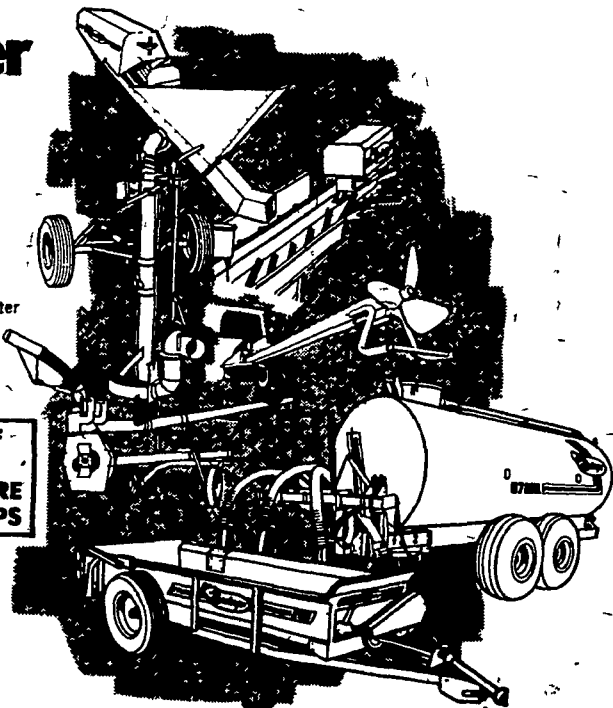
Lancaster County's only dealer specializing in sprayer Sales & Service

**LESTER A. SINGER**  
Ronks, PA  
Ph (717) 687-6712  
Dealer inquiries invited on all Solo Products

## Badger

### MANURE HANDLING SYSTEMS

Here's the top of the line designed to be ahead of its time and to keep your workday ahead of schedule. Badger systems are built better to do the job better. Look at any part of the Badger system and you're looking at a better way at less cost per ton.



WAIVER OF FINANCE ON LIQUID MANURE TANKS & PUMPS



**PIKEVILLE EQUIPMENT INC.**  
RD 2  
Oley, PA 19547  
Ph. (215) 987-6277

**CECIL DAIRY SERVICE**  
RD 1 Rt. 274  
1/2 Mi. South Rising Sun, MD 21911  
Ph. (301) 658-6923

**GRUMELLI'S FARM SERVICE**  
Mechanics Grove  
Quarryville, PA 17566  
Ph. (717) 786-7318

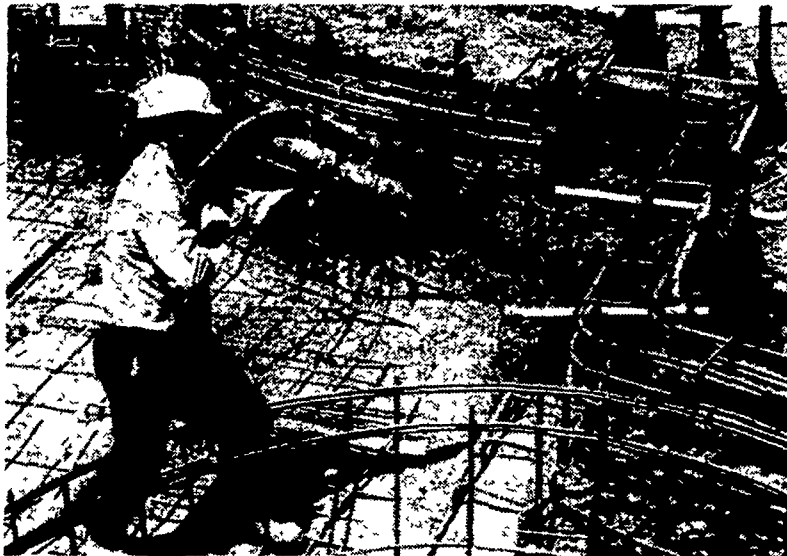
**LLOYD E. KREIDER**  
RD 1  
Cochranville, PA 19330  
Ph. (215) 932-4700

**ROY O. CHRISTMAN**  
RD 1  
Hamburg, PA 19526  
Ph. (215) 562-7218

**SHOW-EASE STALL CO.**  
523 Willow Rd.  
Lancaster, PA 17601  
Ph. (717) 299-2536



KEYSTONE GUN-KRETE CO.



### CONCRETE SPRAYING SERVICE

A PROVEN PRACTICAL WAY OF APPLYING CONCRETE

- Repair Retaining Walls
- Strengthen Existing Masonry Walls
- Reseal Manure Pits
- Reseal Silos
- Trench Silo Construction

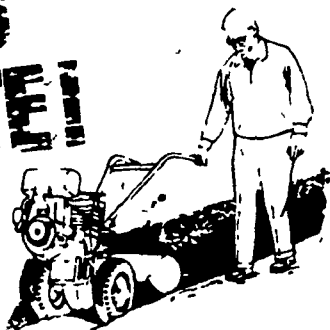
★ Also Concrete Pumping Service  
For Information Call:

**KEYSTONE GUN-KRETE CO.**

43 S. Harvest Road  
Bird-In-Hand, PA 17505

**717-768-3641**

**ACCEPT NO SUBSTITUTE!**



There is only one **TROY-BILT® Roto Tiller & Power Composter!**

- Over 400,000 sold by mail!
- Outsells all competition by a wide margin!
- 49 years hand-assembled experience!
- Now we offer **FREE** Demonstrations, Immediate Delivery!
- Trade-ins welcome, Financing arranged
- Remember: We want your good will!
- Factory Authorized Sales and Service

Best Prices Of The Year Now In Effect, Same as Direct Factory Prices

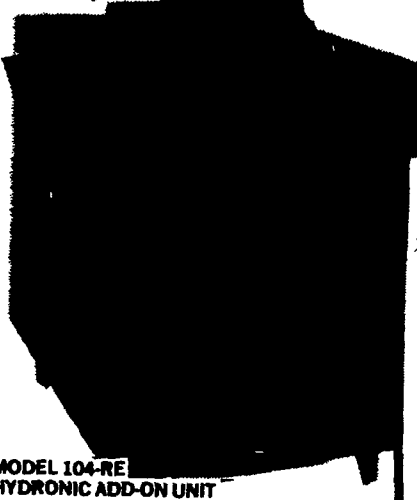
**Hollinger's FARM MARKET, INC**

TWO CONVENIENT LOCATIONS:  
1755 W. Main St. Ephrata, PA 17522  
Located on Route 322  
Phone (717) 738-1131  
222 E. Main St. Campbelltown, PA 17010  
Phone (717) 838-6021

## TIMBER EZE

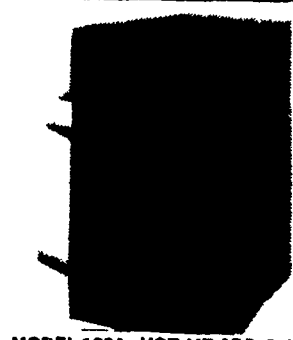
The Ingenious Wood/Coal Heating System

TESTED TO UL 1102 STANDARD FOR RADIANT HEAT BY AN INDEPENDENT LABORATORY



MODEL 104-RE HYDRONIC ADD-ON UNIT

**WOOD & COAL BURNING ENERGY SAVERS**



MODEL 103A - HOT AIR ADD-ON

The TIMBER EZE is especially designed to hook up with your central hot water or hot air heating systems thus eliminating the need to burn costly fuel. Simply install the TIMBER EZE beside your furnace and connect the water pipes to the boiler and let the TIMBER EZE heat your water system.

- FEATURES:
- Automatic Temperature Control
  - Heavy Duty Cast Iron Rocking Grates
  - Cast Iron Doors
  - Fire Brick Lined

Four Models To Choose From

- Burns Logs up to 28"
- Weight 710 lbs
- Constructed of 3/16" and 1/4" steel
- Available in 8 1/2 or 3 1/2 gal water jackets

**A.R. FLAUD SALES**

Timbereze Distributor & Sales

RD #2, Rock Road, Honey Brook, Pa. 19344  
For More Information Call 215-273-3211

DEALER INQUIRIES WELCOME