

Maryland schedules farm visitation

COLLEGE PARK — A double spotlight will be shining on the Maryland agriculture scene tomorrow as 33 farms on both sides of the Chesapeake Bay open their gates to a nationwide audience.

On that day, twenty-four "Welcome Farms" in nine Maryland counties will host an estimated 25,000 urban youngsters and adults during the fifteenth annual statewide Farm Visitation Day.

Another nine topnotch dairy farms will be showing off their facilities to farm-oriented visitors from throughout North America. These visitors represent the vanguard of 2,500 persons expected for the ninety-sixth annual convention of the Holstein-Friesian Association of America. The event runs from Sunday through Thursday at the Baltimore Convention Center.

Both of Sunday's open house events are intended to help promote the farm side of the Maryland slogan, "America in Miniature." Although it is one of the smaller states in geographic

area, Maryland's 16,000-plus farms help to feed the majority of the state's citizens without resorting to imports.

The fifteenth annual Farm Visitation Day is again being sponsored by the University of Maryland's Extension Service in cooperation with major farm organizations in the state, and includes the following farms:

In Anne Arundel County, the U.S. Naval Academy Dairy, located on Route 175, Gambrills.

In Baltimore County The Hereford High School FFA Animal World at Hereford High School on York Road. The dairy farm of Lewis Swift and son will be open for visitation, the farm is located on 17401 Troyer Road in Monkton.

The Calvert County Young farmers will conduct a tour of general farms and farm animals that will be leaving the Huntingdon Fire House at 1:15 on June 28. Mr. and Mrs. Gerald Worell farm on Ferry Landing Road will have demonstrations of dairy goat operation.

Mill Run farm owned by W.T.

Biggs and family, on Annapolis Woods Road in Charles County, will be demonstrating hydroponic tomatoes, a green house and swine operations.

Six farms in Frederick County will be open for visitation they include: Shafdon Farm, Burkittsville — Dairy; Merry-Peep O'Day farm in Brunswick — Sheep; Catocin Mountain Orchard, Thurmont — Orchard; Edmarve Farm, Urbana — Horses; Longview Farm, Graceham — Dairy; and Bullock Farm, Emmitsburg — Beef.

In Harford County two dairy and a beef farms will be open. Woolsey Farm, Churchville and Pond View Farm, Norrisville are dairy farms Waffle Hill Farm a beef operation in Churchville will also be open.

In Montgomery County Windolf Farm in Dawsonville a swine farm, Inn Stedd Farm, Poolesville an Orchard, Sam Stiles 9001 Hunt Masters Road in Gaithersburg a dairy farm, and Sam Riggs farm on Laytonsville Road, Olney a beef farm will all be open for visitation.

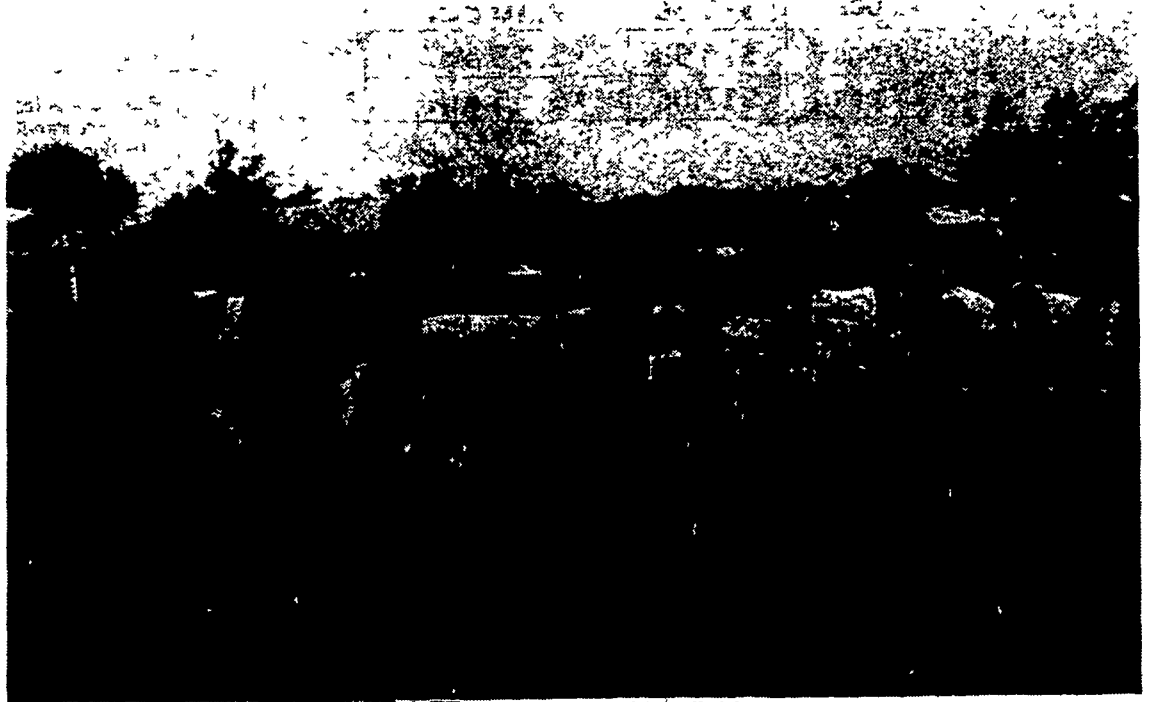
The 'Tinner' Spies farm, Chapel Road in Easton a vegetable farm

and Bountiful Farms, Inc. nine miles South of Easton are to be open in Talbot County for visitors.

Farm visitation in Washington County is scheduled for September 6, 1981 from 1 p.m. - 5 p.m. The following farms will be scheduled for visitation: Lonley Willow Farm in Cavetown a beef dairy farm with a laying flock; Bruce Barr Family, Lettersburg an orchard and Charles Huff farm located between Ringold and Smithsburg and sheep operation.

For more information contact your Extension Agent.

There goes the neighborhood



"With today's cost of land what did you expect...a semi-private pasture?" Standing amid a field of black and whites, this Jersey appears to be contemplating her lot in life.

USDA revokes N.Y. produce firm's license

NEW YORK, N.Y. — N. Merberg and Son Inc., Yonkers, N.Y., has had its produce trading license revoked by the U.S. Department of Agriculture, effective June 8, for failing to pay in full for \$373,988 worth of fruits and vegetables the firm purchased.

USDA's Agricultural Marketing Service, which licenses produce firms under the Perishable Agricultural Commodities Act, had charged the firm with failing to pay the agreed purchase price for 781 lots of produce purchased between April, 1979 and August, 1979.

Charles Brader, marketing official with AMS, said the firm had requested an oral hearing but later agreed to a decision and order revoking its license.

USDA's Administrative Law

Judge Victor W. Palmer ruled that the firm had committed willful, flagrant, and repeated violations of the act.

Under Palmer's order, the firm is ineligible to conduct business subject to the act until June, 1983, and then only if a PACA license is obtained. The firm's officers, directors, and major stockholders — Elliot Merberg, Fred I. Altman, Billie Merberg and the Nathan Merberg estate — may not be employed by or affiliated with any license under the act until June, 1982, and then only if a surety bond is posted and USDA approves.

Under PACA, all interstate traders in fresh and frozen fruits and vegetables must be licensed by USDA. USDA is authorized to suspend or revoke a trader's license for violating the act.

CENTRAL TRACTOR FARM & FAMILY CENTER

**OPEN SATURDAY
JULY 4th
Til 4 P.M.**

JULY SALE

Hundreds of Items On Sale!

Hours Mon thru Fri 8AM to 7PM.
Sat. 8AM to 4PM

WEAVER'S HARDWARE CO.

R.D. 4125 FLEETWOOD, PA. 19522

DISTRIBUTOR OF
CENTRAL TRACTOR
FARM & FAMILY CENTER

215-944-7486
or 944-9648



GOOD YEAR
PIT STOP
On-The-Farm Tire Service Is
Just A Phone Call Away...

Helps Reduce Downtime! When tire trouble hits your farm help is a phone call away your Pit Stop service man can fix flats, liquid fill tires, even do an on-the-spot replacement, whatever it takes to get you going again.

VALUE PRICED TRACTOR REAR

TRACTION TORQUE	OUR BEST SELLER			
\$170 ⁹⁵	Size	Ply Rating	PRICE	Plus FET and reusable trade
Size 14 9x24, 4 Ply Rating Plus \$5 22 FET and reusable trade	18 4x34	6	\$348 ⁰⁰	10 58
	15 5x38	6	\$277 ⁷⁰	7 63
	20 8x38	8	\$610 ⁰⁰	16 21

PRICES SHOWN ARE GOODYEAR SUGGESTED RETAIL PRICES SEE ANY OF THE INDEPENDENT DEALERS LISTED BELOW FOR HIS PRICE AND CREDIT TERMS

Lebzelter's
Farm Tire Center

GOOD YEAR

SEE YOUR INDEPENDENT DEALER FOR SERVICE

BUCK
Wenger Implement Co
Ph 284-4141

INTERCOURSE
C. B. Hooper & Son
Ph. 768-8231

MECHANICS GROVE
Grumelli Farm Service
Ph. 786-7318

ELM
Shotzberger's Farm Machinery
Ph. 665-2141

LANCASTER
L.H. Brubaker, Inc.
Ph. 397-5179

MOUNTVILLE
R.S. Hollinger & Son
Ph. 285-4538

P. Lebzelter & Son
Ph. 299-3794

Goodyear Tires Distributed by P. Lebzelter & Son Co., Lancaster