



These proud Mountville 4-H'ers pose with their newly arrived German Shepherd puppies as they begin the adventure of preparing them for the Leader Dog training program. From left are Carrie Fasolt, Rebecca Fasolt, Sara Settle, Amy Neustadter and Belinda Enders.

# Puppy love

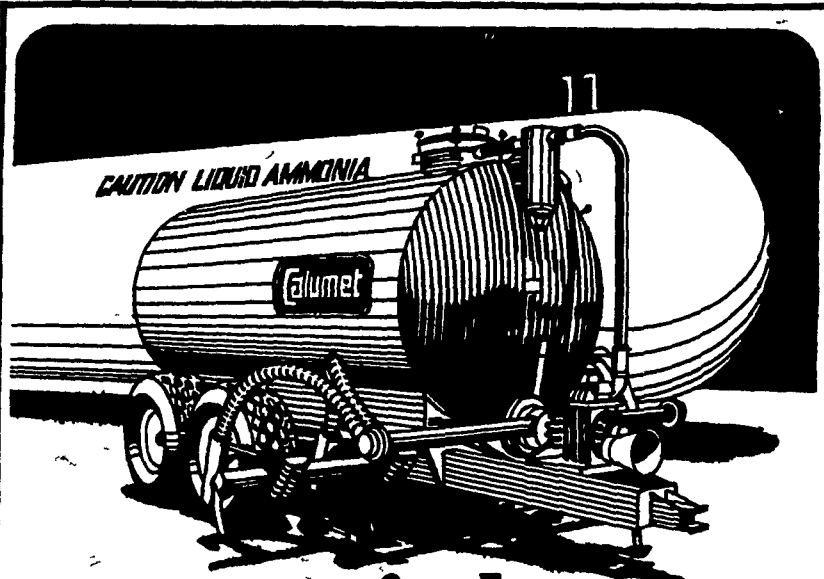
MOUNTVILLE — It was truly a case of puppy love when five members of the Mountville 4-H Community Club met the four German Shepherd puppies they will work with for one year to prepare them for a life as a Leader Dog for the blind.

Indeed, the four lively bundles of fur captivated everyone in the audience when they trotted down the aisle of the meeting room and walked right up to the waiting 4-H'ers.

It was a night of excitement not only for the 4-H'ers but also for the Mountville Lions Club who will co-sponsor the project and who have worked closely in getting the project off the ground in Mountville. It is the first time Lancaster County has been involved in the leader dog program.

Nancy Meyers, Lancaster County 4-H Agent, called it a proud moment in Lancaster County's 4-H history, saying, It will be a year of many new experiences - and frustrations. The 4-H'ers must put

(Turn to Page C38)



## Switch fertilizer tanks to a Calumet vacuum tank with soil injector

Liquid hog manure can save thousands of dollars in commercial fertilizer costs. So it makes sense to preserve that value with good management.

That's why Calumet recommends pairing our vacuum tank with a 2 or 4-shank Calumet soil injector. Soil plow down retains about four times the nitrogen lost with surface spreading, plus reduces odor and runoff.



Stop in to see the full line of Calumet vacuum tanks — in capacities from 1180 to 4500 gallons and choice of two vacuum pumps. And ask about the benefits of using a Calumet 2 or 4-shank soil injector.

### USED EQUIPMENT

- 1 - Clay V2250
- 1 - 10 ft. Badger Pump
- 1 - S3250 Calumet Spreader w/Auger
- 1 - Better-Bilt 12 Ft. Auger Pit Pump



CALUMET & NESSETH DISTRIBUTOR  
**F. ERNEST SNOOK**  
 RD 3 - Box 84, Mifflinburg, Pa. 17844  
 Phone: 717-966-2736

## SOYBEAN ROASTING ON YOUR FARM

**DON'T WASTE IT — ROAST IT**

**MOLDY OR MUSTY CORN**

Have it restored to useable condition by roasting.



Make higher profits from all grains, roasting improves TDN, destroys molds and retards toxins and removes moisture.

CUSTOM GRAIN ROASTING DONE IN PA. AND SURROUNDING STATES

**DALE L. SCHNUPP**

RD 6, Lebanon, Pa. 17042  
 Ph: 717-865-6611

**DAVID N. GROFF ALLEN SUMMERS**

RD 1, Box 506C  
 Lewisburg, PA 17837  
 717-966-3593

RD #1, Box 152-C  
 Nottingham, PA 19362  
 215-932-4761

## 30% LIQUID NITROGEN

BY THE TRAILER LOAD OR BY THE TON

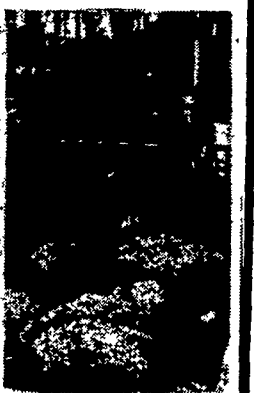
- Sprayers & spraying service
- Poly N liquid corn starter 10-34-0
- Premium corn starters
- Bulk blends to your specifications
- Urea & Amonium Sulfate
- Spreaders & spreading service
- Limestone
- **SALT** - Water softener & animal salt

**F.H. KREIDER**

2400 Dairy Rd.  
 Lancaster, PA 17601  
 717-898-0129



For fast, long lasting fly control in barns, stables, and poultry houses



**New**

**Ectiban**

SEE US NOW!

ZIMMERMAN'S ANIMAL HEALTH SUPPLY

3 Miles West of Ephrata Along Wood Corner Road  
 RD #4 Box 140, Litz, PA 17543  
 717-738-4241  
 Closed Saturday Afternoon