

CHORE-TIME®

The Air System with A Mind Of Its Own

Until now, most ventilation systems had one drawback. Air inlets had to be opened and closed by hand.

This was time consuming — and pretty much a matter of guesswork.

Now, Chore-Time has eliminated this problem.

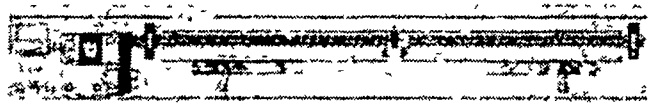
The Chore-Time system has a mind of its own and adjusts inlets — in conjunction

with fan operation — to maintain air pressure at a constant, preset level.

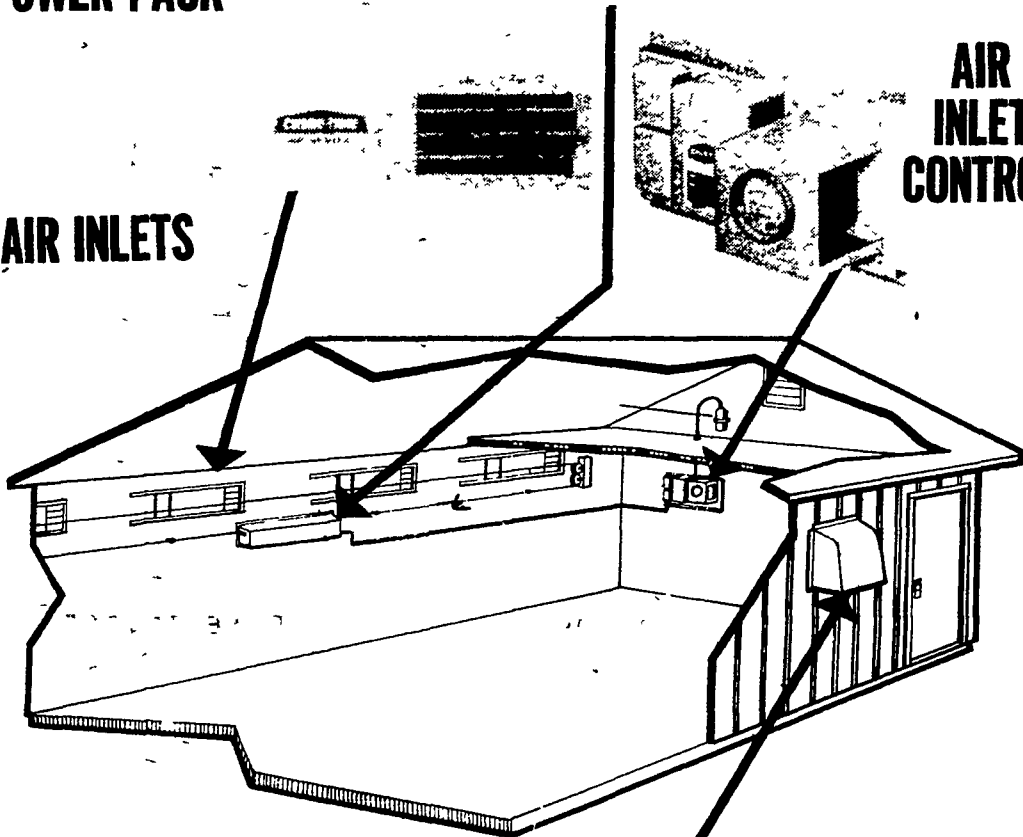
This provides a degree of air and moisture accuracy never before possible in poultry and livestock buildings.

The new inlet control (pictured) is just one of many exclusive features that make Chore-Time air systems number one in performance and reliability.

INLET POWER PACK

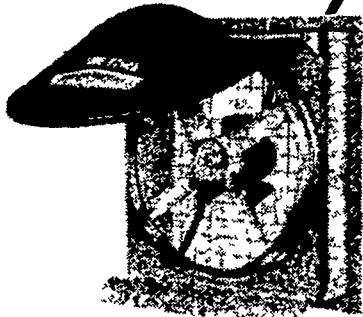


AIR INLETS



AIR INLET CONTROL

Four basic components go into the makeup of this ventilation system the fan, the inlet, the air inlet power pack, and the controls. Coordinated, these four basic components can provide you with better conversion and performance by removing stresses due to lack of oxygen, excess humidity, noxious gases and temperature extremes

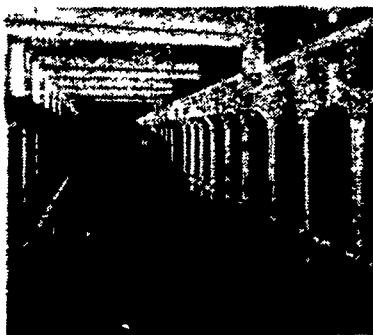


Reliability through simplicity, Chore-Time's advanced air system provides automatic control of incoming fresh air, moisture and heat for productive environmental control in agricultural buildings

AUTOMATIC HOOD FAN

ventilation . . .

Keep animals comfortable, and you keep them far more thrifty and far more profitable. Chore-Time's Advanced Air Systems approach combines controlled air inlets with the finest variable speed and single speed fans and other components. They're fitted to your specific building. The result is year-around, day-in and day-out comfort for your animals.



AGRI-EQUIPMENT, INC.

CATTLE - HOG - POULTRY EQUIPMENT
2754 Creek Hill Rd., Leola, PA 17540
PHONE: 717-656-4151
STORE HOURS: Mon.-Fri. 7:30 to 5:00; Sat. 7:30 to 11:30
SERVING PA, N.J. AND N.Y.

AGRI-EQUIPMENT INC., OFFERS COMPLETE
• SALES
• INSTALLATION
• SERVICE

FFA Week

(Continued from Page A26)

Juniata, second.

Interview — Heidi Peiffer, Cedar Crest, Lebanon County, first; Diane Stoltzfus, Twin Valley, Berks County, second; and Ginger Sowers, Annville-Cleona, Lebanon County, third.

Poultry — Steve Nissly and Colleen Spahr, Penn Manor, Lancaster County, first and second; and Todd Miller, Warwick, Lancaster County, third.

Ag Salesmanship — Patricia Dempsey, W.B. Saul, Philadelphia

County, first; Brian Platt, Berlin Brothers Valley, Somerset County, second; and Wanda Steffy, Eastern Lancaster County, third.

Ag Mechanics — Glenn Hartz, Eastern Lancaster County, first; John Stepanchak, Manheim Central, Lancaster County, second; and Jim Malone, Penn Manor, Lancaster County, third.

Forestry — Benny Walizer, Sugar Valley, Clinton County, first; Scott Henry, Somerset County AVTS, second; and Ronald Gettys, Sugar Valley, third.

Farm Management — Chuck (Turn to Page A28)

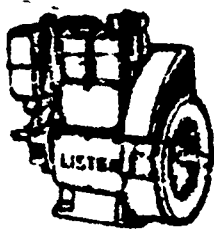


Agricultural mechanics winners at FFA week hail from Lancaster County. They include, from the left, Glenn Hartz, Grassland, Eastern Lancaster County; John Stepanchak, Manheim Central; and Jim Malone, Penn Manor.

SMUCKER'S SALES SERVICE, INC.

RD #2, BOX 21
NEW HOLLAND, PA 17557

SALES & SERVICE FOR:



LISTER, PERKINS & DEUTZ DIESELS



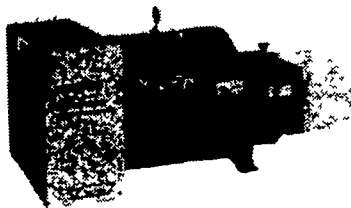
2 Cyl. F2L-912

- We Have SR2 12 h.p. Lister Diesels, as is or rebuilt.
- Good used diesel engines
- New Sputnik wheels and parts

We mount diesels on balers, crimpers, cornpickers, etc.

WINGO® Your One Source For Power!

Electricity you can count on anytime, anyplace.



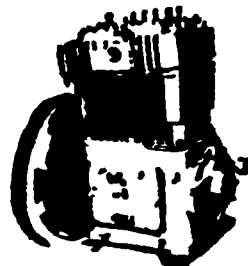
Tractor Driven



Two Bearing

DEALER FOR QUINCY AIR COMPRESSORS

For lower cost per hour power, rely on



Lister
DIESEL POWER

FOR PROMPT SERVICE CALL
717-354-4158 OR IF NO ANSWER
CALL 717-354-4374