

Top cow sells for \$5,700 at Red Angus Sale

DENTON, Tx. — One-half interest in a cow and her bull calf sold for \$5,700 at the recent Southern Classic Red Angus Sale. The sale was held on June 6 at the

Middle Tennessee State University Livestock Pavilion.

The cow, Choctaws Red Ruby 24516, and her calf sired by "Jackpot" were sold by Con-

federate Valley Ranch of Franklin, Tn., was sold to Harold Miller and Sons of Huntingdon, Tn.

The top selling bull sold for \$2,900 to Three Rail Red Angus Farm.

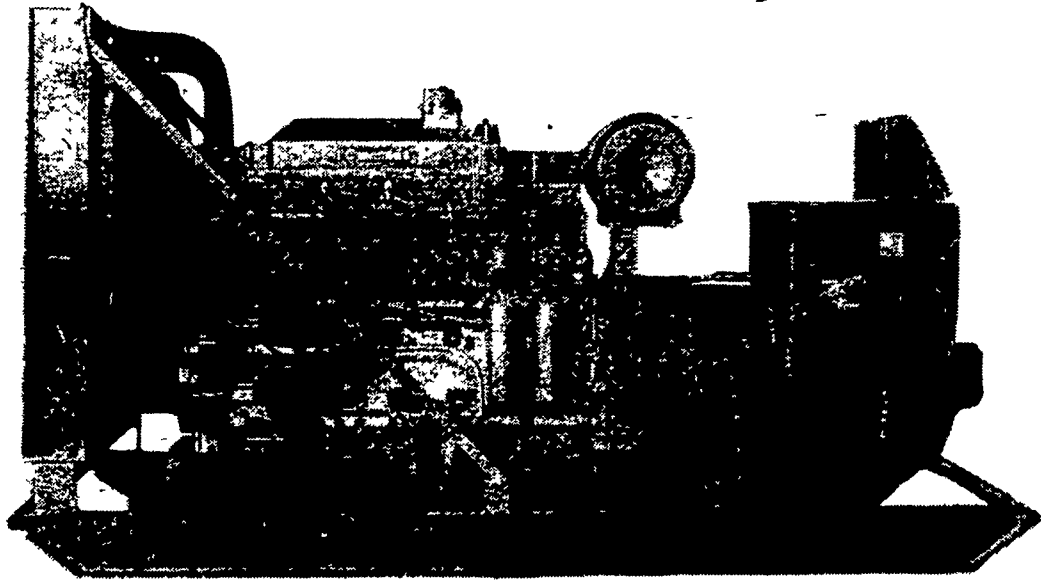
The champion bull of the sale was owned by Cundiff Red Angus Farm, Fairbush, Ky. sold to Ray Langer of Platte City, Mo. for \$1500.

In addition to the sale the Southeastern Red Angus Association also held its annual meeting. During this time, Jack Swerger of Clearwater, Fl. was unanimously elected as president of the SERAA. Vice president will be William Newman of Fayetteville, Tn. Rex Jorgenson will serve as secretary. The directors for SERAA will include Bill Johnson of Eutaw, Al. and Johnnie Cundiff of Nancy, Ky.

The SERAA will be hosting the 1981-82 national Red Angus convention it is to be held in Orlando, Florida. There also are plans for a national Junior heifer show and for an SERAA show of national caliber.

SUMMER STORMS CAN STRIKE ANY HOUR,
BUT YOU CAN KEEP GOING WITH

MAXI-POWER



Generators 375 KW

- ★ 1-1000 KW
- ★ Manual or Automatic
- ★ Switch Gear
- ★ Parts
- ★ Service



MAXI-POWER GENERATOR SYSTEMS

330 Fonderwhite Road, Lebanon, PA 17042
PH: 717-274-1483

Division of Leonard Martin Company

Meat consumption up

WASHINGTON, D.C. — Americans ate about 13 percent more red meat, per capita, last year than they did in 1960 but paid three times as much for it than they did 20 years earlier. Still, red meat expenditures last year accounted for only 3½ pct. of their incomes, compared to 4.8 pct. in 1960. This, according to a USDA survey.

Per capita red meat expenditures were \$93.23 in 1960. Last year, those expenditures averaged \$292.24 per person.

Beef consumption averaged 105.8 lbs. per capita last year, up 25 pct. from the 85.1 lbs. consumed in 1960. But, the per capita expenditure on beef was \$185.54 last year. That's 3½ times the \$52.65 spent in 1960. Still, the percent of income Americans spent on beef was only 2.27, compared to the 2.72 pct. they spent in 1960.

Pork consumption averaged 75.6

lbs. per person last year, up 17 pct. from the 64.9 lbs. consumed in 1960. But, the expenditure per person last year was \$97.97, compared to \$33.39 — nearly three times the 1960 total. Still, from the income standpoint, Americans spent only 1.20 pct. last year, compared to 1.73 pct. in 1960.

Veal consumption averaged 6.1 lbs. per person in 1960, only 1.8 lbs. last year. That's a 70 pct. decline. But, the cost of that veal consumed, at \$4.11 in 1960, was \$4.95 last year. Yet, from the income standpoint, Americans spent .21 pct. in 1960, only .06 pct. last year.

Lamb consumption declined from 4.8 lbs. per person in 1960 to 1.6 lbs. last year, while the cost of the lamb consumption, at \$3.08 per person in 1960, moved up to \$3.78 last year — a 22 pct. increase. Still, from the income standpoint, they spent .16 pct. in 1960, only .05 pct. last year.



**READ
LANCASTER FARMING
FOR COMPLETE
AND UP-TO-DATE
MARKET REPORTS**

TRI-COUNTY SWINE SYSTEMS

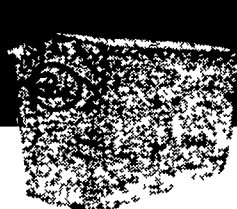
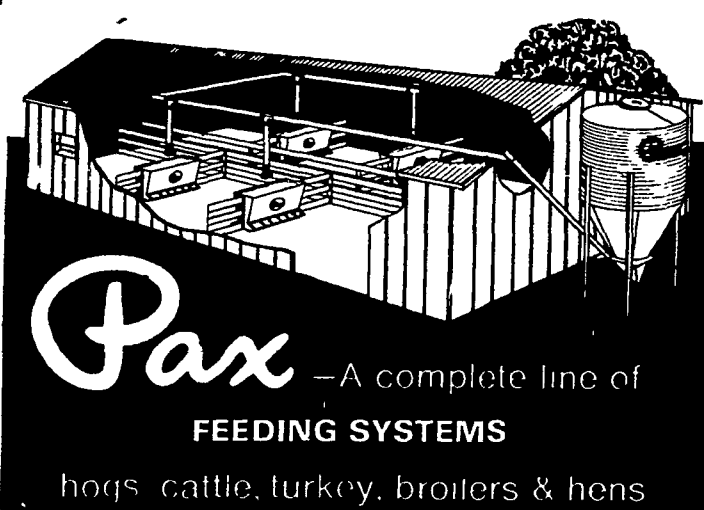
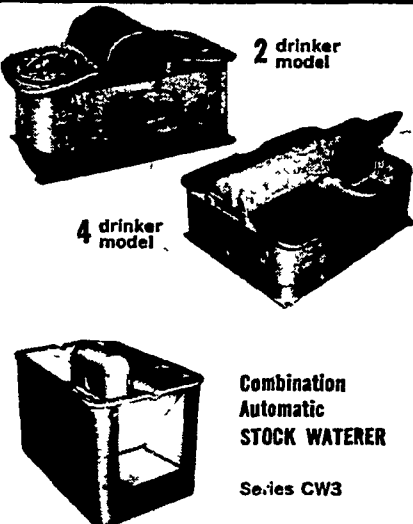
"When It's Time To Build, Remodel, or Replace Equipment - It's Time to Call TRI-CO."



SPECIAL SALE During the Month of June
On All PAX EQUIPMENT
Save Now... Sale Ends June 30, 1981



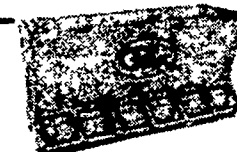
automatic livestock
Pax WATERERS



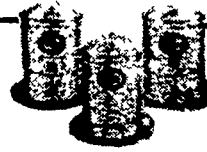
WOODEN FEEDERS
standard, master and half
side 4 - 6 - 8 - 10 - 12 doors



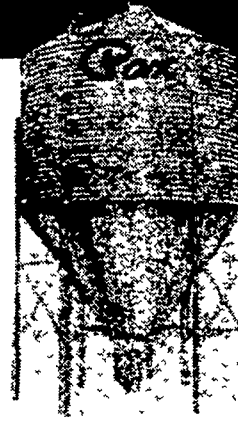
SUR-FLO
40 - 60 - 80 - 100
bushel feeders



STAINLESS FEEDERS
nursery and finishing,
double or single trough



ROTO-EZE FEEDERS
6 bu. with or without
trough guard.



BULK BINS both
center and side draw

New from
Trojan.



The simple, reliable system that cools hogs when they need it, shuts down when they don't. And does it without failure-prone electricity or timers.

TRI-COUNTY

PHONE 717-274-3488 LEBANON PA.



SWINE SYSTEMS

**THE "SILVER LINE" -- Dependable,
Up-To-Date Equipment
Mfg. By Tri-County Swine Systems
SEE OUR EQUIPMENT ON DISPLAY
At 608 E. EVERGREEN ROAD
LEBANON, PA.**

HOURS: Mon. - Fri. 7:00 to 4:30
Owners: Carl Martin & Robert High