

TRUCKS & TRAILERS

1979 Chevy Scottsdale 3/4 ton 4 wheel drive pickup, 350 4 speed, PS, PB, air con, Am-Fm, lock out hubs, 27,000 miles, \$5650 717-859-3291 or 733-4884

64 60 series Chevrolet truck with 16' dump bed and racks Nice grain truck 717-528-4343

2 - 1979 Int tractors, diesel, single axle, low mileage, excel. cond., many extras. Asking \$22,500 each, Berks, Ask for Woody, 215-376-8436

1 - 1977 Mercedes, 24' Morgan furniture body, approx 1850 cu ft, excel cond Ask for Woody, Berks - 215-376-8436

71 IH model 1600 flat bed dump, 12' all steel body, excellent condition \$3450 or best offer 201-249-3090, 201-873-3769

1965 Parker/Moore Alum dump Trailer. 25' 717-528 4343

1967 1/2 ton Chevy pickup, 327, good Imron paint, \$895 717-442-8206

1970 IHC 1700 - 24' Henderson Roll Back PS Good \$8500.00 5800 Gallon Stainless Steel Tanker \$7,800.00 1974 Case 850 B Loader \$10,500.00 JD 450 - 6 Way Dozer \$9500.00 1972 IHC, 20' Log Bunks Prentice G Loader \$13,500.00. John Deere 540A Log Skidder \$9500.00 28' Alum Tandem Dump \$6500.00 1975 Ford Louisville 9000 Tractor \$9500.00 1973 F750 Ford 14' Grain Dump \$4500.00, Others, Trade, Finance 814-793-2829 Curry Supply Martinsburg, Penna

For Sale - Stocked and equipped or bare Juniata Co dairy farm, 38 stall barn, 3 bedroom house, possible FHA financing Call 717-436-8346

Int, air, 27,500 GVW with 4 cu yd gallon 9' dump, engine & trans nebed work, \$1000. Lebanon Co 717-865-3857 or 865-6860

For Sale - 19' Cattle rack truck body, good shape, divider gates inside, good roof, 70 Dodge 3/4 ton pickup runs good, 717-354-9595

TRAILERS - Cherokee and Rawhide stock trailers, horse trailers, farm flatbeds, gooseneck and bumper models available 201-782-8771

1974 Stoltzfus dry lime and fertilizer spreader box for truck, 10', full hyd, air lift boom. 215-593-2495 eves

For Sale - 1950 Int. truck, cab & chassis, good condition 717-758-8102 between 6 & 9 P M

For Sale - 1970 Ford 4000 with sleeper, 250 Cummins engine with 10 speed, tandem axle, \$3900 1970 Ford, rebuilt gas engine, single axle, \$2900 717-866-4906.

1953 International Cattle Truck
Model R4, 28,000 orig. miles, truck in A1 shape.
201-658-3383

1964 Int.-H 16' flat bed dump, current PA inspection \$3500

530 Case backhoe \$5500

1966 White TA dump \$8500

1971 Mack TA dump \$16,850

1969 F-800 S-A dump \$6150

125C Int. -H 4-1 Rops, excellent loader \$18,850

WHITEFORD CONSTRUCTION
301-452-5660
717-456-7497 after 6

TRUCKS & TRAILERS

1981 D150, 2000 miles
1980 D50 pickup, new - Special \$5995
1979 2 door Omni 024 hatchback, real nice, \$4895
1978 Aspen 4 door, 4 speed overdrive
1981 Ford Escort, 3,900 miles
1981 Ford Fairmont, 907 orig. miles, like new

— Real Good Specials On Pickups In Stock —

PETTICOFFER DODGE, INC.

Route 230 East Next to Shopping Center
Elizabethtown, PA
PHONE 717-367 1808

NOTICE

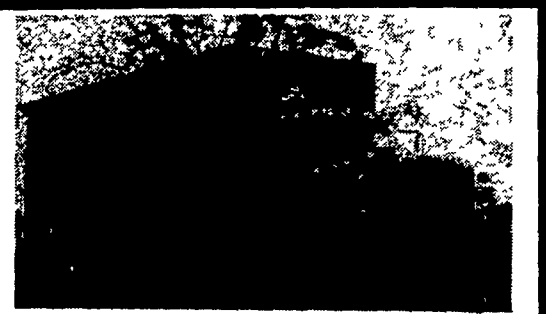
Thank you for your past patronage at Heritage Chevrolet.



I will be associated with John N. Sauder Co. of New Holland.

For all of your transportation needs, call me at 354-4381 or 859-2647.

Sincerely,
John N. Zimmermann



1977 International 1850, 466 Diesel Truck
Eby Aluminum Body, 7' high inside, 25' long.
717-786-7229



Tri-Axle Goose Neck Stock Trailer with removable double deck 7 1/2' wide 20' hauling deck.
Call **DENNIS L. GRUMBINE**
RD #2 Myerstown
717-866-6218
Price \$3850.00



1978 COF 4070B Transtar
NTC, big cam 290 Formula, RT 1110 trans., 10x20 AC, Custom interior, sliding fifth, 154" W.B.
Can lengthen wheel base to accommodate dump body.
Phone 717-354-9422

TRUCKS & TRAILERS

1964 B67 Mack tractor, good running condition \$2200
24' steel dump trailer, fair condition \$2000 717 865-6710

1973 Hanover Gooseneck trailer, 8x16 flatbed with cattle racks, electric brakes, in good shape 717-442-8126 Lancaster Co

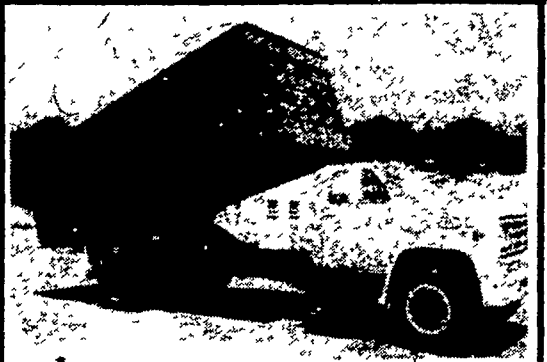
1971 International 1800 w/new 16' grain box, 16 ton Hoist \$6250.

TRUCKS & TRAILERS

Energy-Hyd truck hoist Sales & Service Anderson's Repair Shop, Rd 1, Felton, PA 717-244-2039

1970 Diamond Reo truck, 26,000 GVW, good condition, \$3500 717-626-8487

1969 Int 1900 tri-axle dump truck, all good tires, 20' aluminum bed, new 549 gas motor, exc cond, \$13,500 215 869-9265 after 5 P M or 869-2952 anytime



1978 - GMC 6500 SIERRA
30,000 lb. gross weight, 13,000 orig. miles, Garage kept. Fibre glass tilt hood & fenders, 10:00x20 rubber, 427 engine, heavy duty front axle, air brakes, 5 speed w/2 speed axle, power steering, radio, 50 gallon fuel tank, 18 ft. Mid West steel body, 54" high with 12" extensions, 18 ton twin cylinder hoist, This truck is in mint condition.
\$16,000.00
Phone 717-784-1593

ALL PRICES REDUCED!



LANCASTER
1710 Rohrerstown Rd.
717-569-2648

YORK
1116 Roosevelt Av.
717-848-6400

USED TRUCKS

EXCEPTIONALLY CLEAN AND WELL MAINTAINED

1976 & 1977 CHEVROLET 12' STEP VANS P30
Matched Fleet - Will sell one or 10, etc., 350 V8 engine, 4 speed transmission, dual rear wheels, aluminum bodies, with or without new paint.
1975 FORD 16' CAB & CHASSIS LN700
361 V8 engine, auto. transmission, power steering, AM radio, 9:00x20 tires, 26,000 license
1975 IHC 7 1/2' DUMP BODY 1600
345 V8 engines, 4 speed trans., power steering, 8:25x20 tires, exceptionally clean, transmission overhauled.
1975 FORD 20' VAN w/LG LN700
361 V8 engine, automatic transmission, power steering, recent overhaul, new paint.
1975 FORD 16' CAB & CHASSIS LN7000
175 HP Cat. diesel engine, 5 speed transmission, 2 speed rear, PS, AM radio, dual 50 gal. tanks, and new paint.
1975 CHEVROLET 20' & 22' VANS TE67
with or without lift gates, 366 V8 engine, 5 speed or automatic transmission, power steering, radio, new paint.

USED TRACTORS

1974 CHEVROLET TRACTOR Titan 90
Tandem axle diesel sleeper 318 Detroit engine, 13 speed transmission, air conditioning, recent major overhaul.

USED BODIES

14' ALUMINUM VAN BODY
1974 Morgan, pre-painted aluminum panels, overhead rear door, curb-side door, slatted interior, new paint, with lift gate.
14' REFRIGERATED VAN BODY
1975 Duralite aluminum smooth skin, extruded aluminum floor, new paint, XMT20D thermoking unit with electric standby.

Complete maintenance records available for inspection. Other makes, Models & types to choose from.

TRUCKS & TRAILERS

TRUCKS & TRAILERS

4 WHEEL DRIVES

1979 Jeep J10 Pickup, 360 V8, A, PS, PB, AM-FM, Sliding Rear Window, White Spoke Wheels, 2 Tone Paint. \$5995
1979 Chevy Blazer Cheyenne, V8, Auto., PS, PB, AM-FM. \$6995
1979 Blazer, 350 V8, 4 Speed, PS, PB, Air Cond., Radio, White Spoke Wheels, 31 gal. fuel tank \$6995
1979 Chevy Cheyenne Shortbed, 350 V8, Auto., PS, PB, AM-FM Stereo & Tape, White Spoke Wheels, 21,000 Miles, Like New \$6995
1979 Bronco Ranger XLT, 351 V8, Auto., PS, PB, AM-FM Stereo & Tape, One Way Glass, Black with White Spoke Wheels \$6995
1977 Chevy Bonanza Pickup, 400 V8, Auto., PS, PB, Air Cond., AM-FM Stereo, Tilt Wheel \$5495
1976 Ford F100, 360, 4 Speed, PS, Lockout Hubs \$3995
1971 Ford Bronco, 302 V8, 3 Speed, St. Shift, AM Radio, Lockout Hubs, 56,000 orig. miles \$3495

VANS

1980 Ford, Long Wheel Base, 6 Cyl., Auto., PS, PB, Radio, Twin Fuel Tanks. \$6995
1979 Dodge Sportsman, 5 Pass., V8, Auto., PS, PB, AM-FM, 14,000 Miles, 2 Tone Blue, Like New \$6995
1978 Dodge Panel Van, Short Wheel Base, 6 Cyl., St. Shift, PS, AM-FM, 37,000 Miles \$4695
1977 Ford F150, Econoline, V8, Auto, PS, PB \$3795
1974 Chevy 3/4 Ton 5 Pass. Sport Van, 350 V8, Auto., PS, PB, Air Cond., AM-FM 8-Track, 29,000 Orig. Miles, Beautiful Cond. \$3995

PICK UPS

1980 Toyota 3/4 Ton Long Bed, 4 Cyl., 4 Speed, AM Radio \$6495
1979 Ford F100, 6 cyl., Auto., PS, AM-FM, Cap. \$5695
1979 Chevy C10, 250, 6 Cyl., PS, PB, A, AM-FM Radio, 24,000 Mi., Like New \$5895
1979 Ford F150, 351, V8, Standard Shift, PS, PB, AM Radio \$5495
1979 Ford F250, V8, Auto., PS, PB, AM Radio \$4995
1978 Chevy C20, 350 V8, 4 Speed, PS, PB, AM Radio, 7100 GVW. \$4895
1978 Chevy C20, 350 V8, Auto., PS, PB, AM Radio \$4995
1978 Chevy Luv, 4 Cyl., Auto, Air Cond., AM-FM, 7' Bed \$4995
1978 Ford F100, 6 Cyl., Auto., PS, PB, AM Radio, Cap, 2 Tone Paint \$5495
1977 Dodge Adventurer SE, Auto., PS, PB, Air Cond., AM-FM Stereo & CB, 2 Tone Red & White with Rally Wheels, 42,000 Miles \$4495
1977 Toyota Long Bed, 4 Cyl., 4 Speed, PB, AC, AM Radio, Cap \$4995
1977 Dodge D100, 318 V8, A, PS, PB, AC, AM Radio, Adventurer Package \$4495
1972 Datsun, 4 Cyl., 4 Speed \$1695
Many More Pick Ups To Choose From **WE DEAL!**

MIKE RHODES & CO.

"THE TRUCK PEOPLE"

Rt. 663 & Swamp Pike, Gilbertsville, Pa
Area Code 717 or 215 Call Toll Free
1-800-362-7655
or 215-327-1380