

## Montgomery honors top Holsteins at banquet

LANSDALE — David Longacre and Walebe Farms dominated production and type awards presented at the recent annual banquet of the Montgomery County Holstein Club.

The banquet program also featured the crowning of the 1981 Montgomery County Dairy Princess Marilyn Seipt, daughter of Mr. and Mrs. Fred Seipt, of Lansdale.

Runnerup in the Princess Contest was Joanne Kolb, daughter of Mr. and Mrs. Daniel Kolb, of Spring City.

The Montgomery County milk production awards for 1980 included:

Two year old — Redroof Glendell AC Fame, Walebe Farms, 1-11, 24,172 lbs.; runnerup, Medospring Lucky Joyful, Meadospring Farm, 2-01, 21,024.

Three year old — Da-Gina Jet Stream Minny, David Longacre, 3-11, 25,009 lbs.; runnerup, Tranquility Jet Stream Robin, Walebe Farms, 3-05, 23,514.

Four year old — Da-Gina Royal Marjorie, David Longacre, 4-00, 25,882 lbs.; runnerup, Keystone Jet Stream Lilac, Keenline Farm, 4-03, 24,917.

Aged cow, 5-9 years — Do-Ri-Da Marquis Nora, David Longacre, 8-09, 30,036; runnerup, Lo-Lee Loris Pilot Alan, Walebe Farms, 5-09, 27,823.

Senior aged cow, over 10 years — C-Rockridge Perseus Brenda, David Longacre, 15-11, 21,271; runnerup, Quietcove Matt Cinderella, Walebe Farms, 11-03, 21,044.

The Montgomery County High Milk Trophy went to David Longacre for the 30,036-lb. record of his aged cow.

The fat awards included:  
Two year old — Redroof Glendell AC Fame, Walebe Farms, 1-11, 801 lbs.; runnerup, Indianvale Gay Greta, Harold Halteman, 2-02, 763 lbs.

Three year old — Freddy-Hill Gay Gabby, Freddy-Hill Farm, 3-09, 975 lbs.; runnerup, Airyside Heilo Rhoda, Walebe Farms, 3-09, 829 lbs.

Four year old — Da-Gina

Reflection Victoria, David Longacre, 4-11, 983 lbs.; runnerup, Freddy-Hill Starry Babs, Freddy-Hill Farm, 4-03, 879 lbs.

Aged cow, 5-9 years — (Tie) Do-Ri-Da Marquis Nora, David Longacre, 8-09, 978 lbs. and Keenline Joyboys Trix, Keenline Farm, 6-07, 978 lbs.; runnerup, Chiques Glen Bootmaker Sunny, Freddy-Hill Farm, 5-00, 918 lbs.

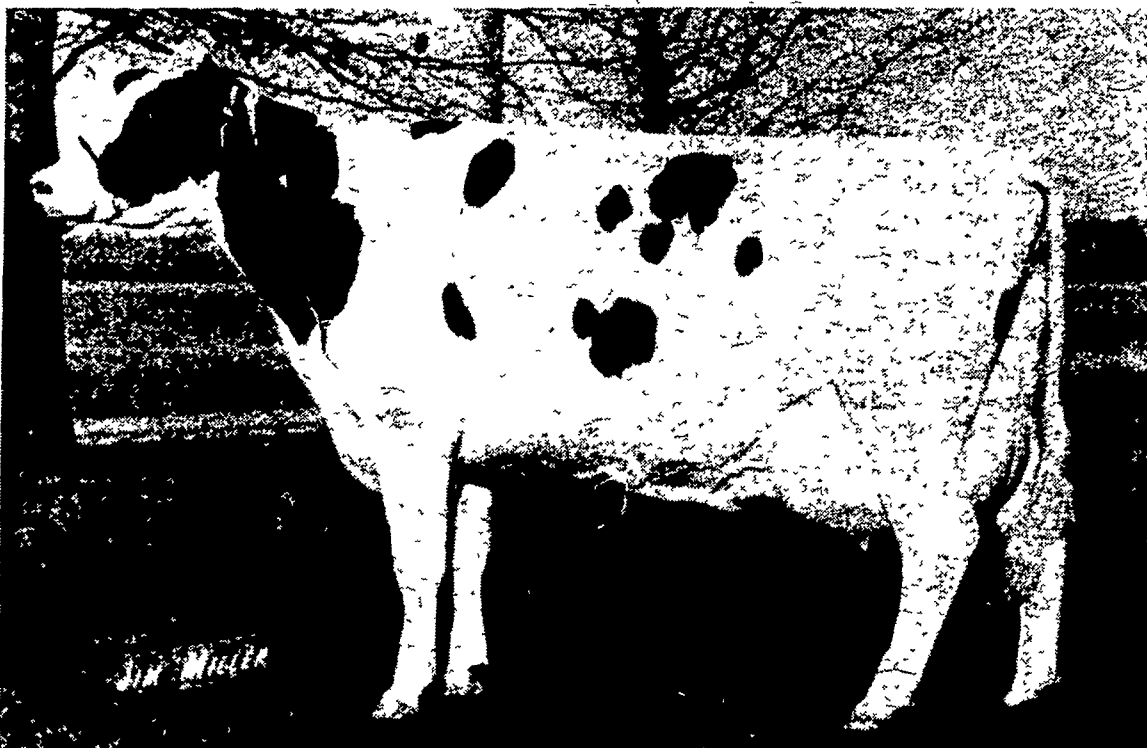
Senior aged cow, over 10 years — Romeda Don Augur Citation Lory, Walebe Farms, 10-08, 732 lbs.; runnerup C-Rockridge Perseus Brenda, David Longacre, 15-11, 711 lbs.

The Montgomery High Fat Trophy also went to David Longacre for the 983-lb record of his four year old.

The 1980 type awards:  
Two year old — Welcome-In Moniter Faith, Walebe Farms, 2-08, VG-87; runnerup Keystone Ormsby Ice Cream, Keenline Farm, 2-11, VG-86.

Three year old — Will-Al Persuader Puddle, Keenline Farm, 3-03, VG-88; runnerup Woodson Rorae Gent Evelyn, Woodson Farm, 3-08, VG-88.

Four year old — Jug-a-Luck Cardinal Jewel, Walebe Farms, 4-02, VG-88; runnerup, Woodson Yoho Samson Emmaliane, Woodson Farm, 4-04, VG-88.



High type trophy at the recent Montgomery County Holstein banquet went to Quietcove Fond Matt Cinderella, of Walebe Farms. The 12-year-old cow is Ex-95-3E. She took the same honors for senior aged cow and was runnerup in that category's milk production with 21,044 lbs. at 11-03.

Aged cow, 5-9 years — Hess-Hy Vue Maple Ginny, Walebe Farms, 7-02, EX-92 2E; runnerup tie, Keenline Joyboys Trix, Keenline Farm, 8-01, EX-90, and Do-Ri-Da

Marquis Nora, Davod Longacre, 9-08, EX-90.

Senior aged cow, over 10 years — Quietcover Matt Cinderella, Walebe Farms, 12-01, EX-95-3E;

runnerup, Du-Mar Apollo Oda, Du-Mar Farm, 10-05, EX-90.

The High Type Trophy went to Walebe Farms for the senior aged cow.

## Produce hotline opens Monday

HARRISBURG — The Pennsylvania Department of Agriculture's Produce Marketers Hotline will again provide direct farm marketers with updated information to help determine pricing of fresh produce in 1981.

Farm market operators in the Commonwealth seeking information on price ranges for produce in season can take advantage of this toll-free hotline (1-800-932-0904). The hotline will open on Monday, June 15 and will remain in service through September 30.

"The hotline is just one phase of our efforts to improve farm

marketing in the state," State Agriculture Secretary Penrose Hallowell said.

"With greater stability in pricing, marketing of our farm produce should be more orderly."

Hallowell noted that the hotline was initiated as a pilot project in 1980, as a cooperative venture with the USDA's Agricultural Marketing Service. The 1981 hotline is being completely funded and operated by the Pennsylvania Department of Agriculture.

"Pennsylvania farm marketers found the program worthwhile last year," he said. "From July 15 to September 30, we received nearly 5,500 calls, an average of 120 per day. We decided to continue this program as a service to our farm community."

The Produce Marketers Hotline

provides information, on retail prices for inseason farm produce. This information is tallied by the Bureau of Marketing and is revised twice weekly, on Mondays and Thursdays. As new crops are ready for harvest, they are included in the pricing information.



Redroof Glendell AC Fame, of Walebe Farms, took both high milk and butterfat production records for 1980 at the recent Montgomery County Holstein banquet. As a two-year-old, Fame produced 24,172 lbs. of milk and 801 lbs. of fat.



**FIRE EXTINGUISHERS**  
All Types and Sizes

**SMOKE ALARMS**  
Sales & Service

**WHITE HORSE MACHINE**

RD 1, Gap, PA  
At White Horse

**USED COMBINES!**

★ JD 4400 G. Combine, Cab, Air, w/13' Table & 4 Row Cornhead

★ JD 45 Combine with 10 ft. Table

**USED EQUIPMENT - SPECIAL PRICES!**

NH 469 Pull Haybine, Fair to Good Cond. - \$995  
JD 7,000 Max. Emerg. Planter, Dry Fert., Wide Row, Monitor, HD Coulters - \$5500  
White 5400 6R, 30", Min. Till, Dry Fert., w/Auger, Monitor - \$2500  
JD 1280 8-30", Liq., F. Pickup - \$1500  
JD & MH 7' Offset Discs - \$700  
IHC 14' Finishing Disc w/Harrow - \$1495

JD 45 3-Bot. 3 Pt. Mtd. Plow - \$600  
JD 3 Pt. Cat. 2-Bot. Plow - Fits 801 Hitch - \$395  
Lilliston 76 Rotary Cutter - \$695  
NH 56 Rake - \$850  
NH 517 Man. Spreader with New Chain, As Is — \$750  
MF No. 12 Baler with 22 Thrower - \$1,600  
David Bradley 7' Pull Mower

**NEW MACHINES**

JD & NH Hay Rakes  
NH 30 Whirl-A-Feed Blower  
JD 3940 Harvester  
JD 16A Chopper  
NH 38 Chopper  
JD 6620 Side Hill, with 15' Platform & 6 Row Cornhead  
JD 337 & 347 Balers  
JD 145 Loader  
Hub 24' Elevator

Lamco 18' Throw Bale Wagon, Channel Sides  
Vicon 4 wheel 3pt. Rake  
NH & Deere Wagons  
JD 346 Wire Baler  
NH 310 Reg. Pickup, Less Thrower  
NH 310 & 315 w/Throwers  
JD 201 28' Imp. Carrier

**CALL KERMIT FOR PRICES ON NEW MACHINES**

• Full Line of NH & JD Equipment... Waiver of Interest Available on Most New Machines!



**KERMIT K. KISTLER, INC.**  
Farm Machinery Sales & Service  
Rt. 143, Lynnport, PA 18061  
PH: 215-298-2011