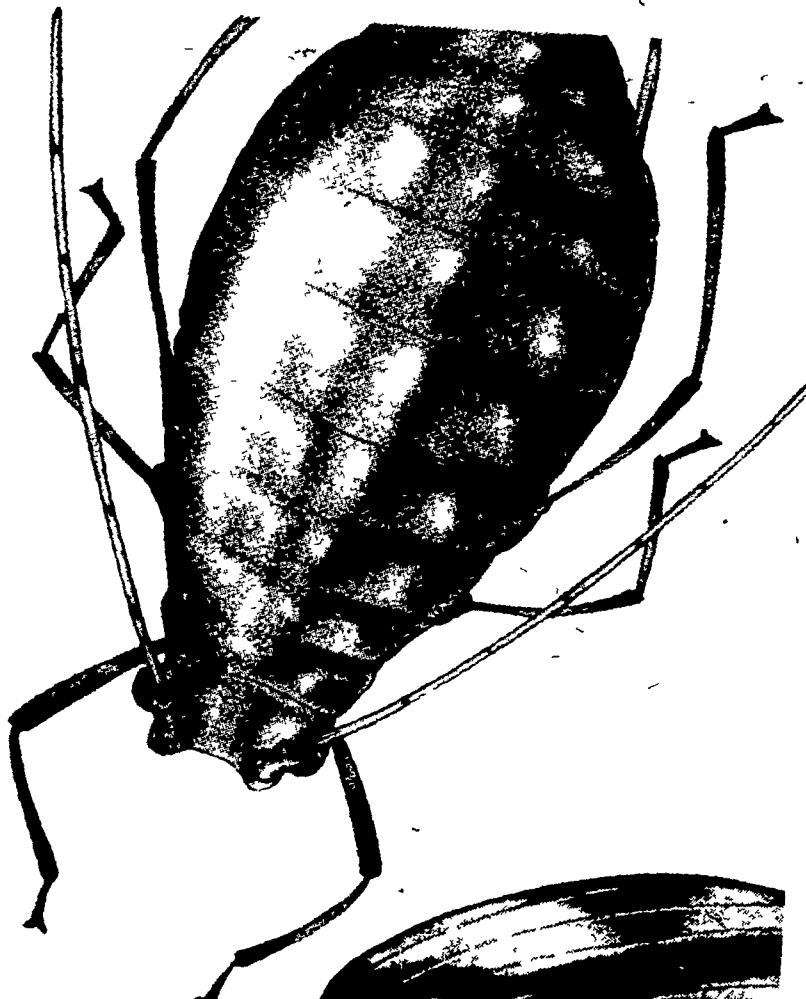
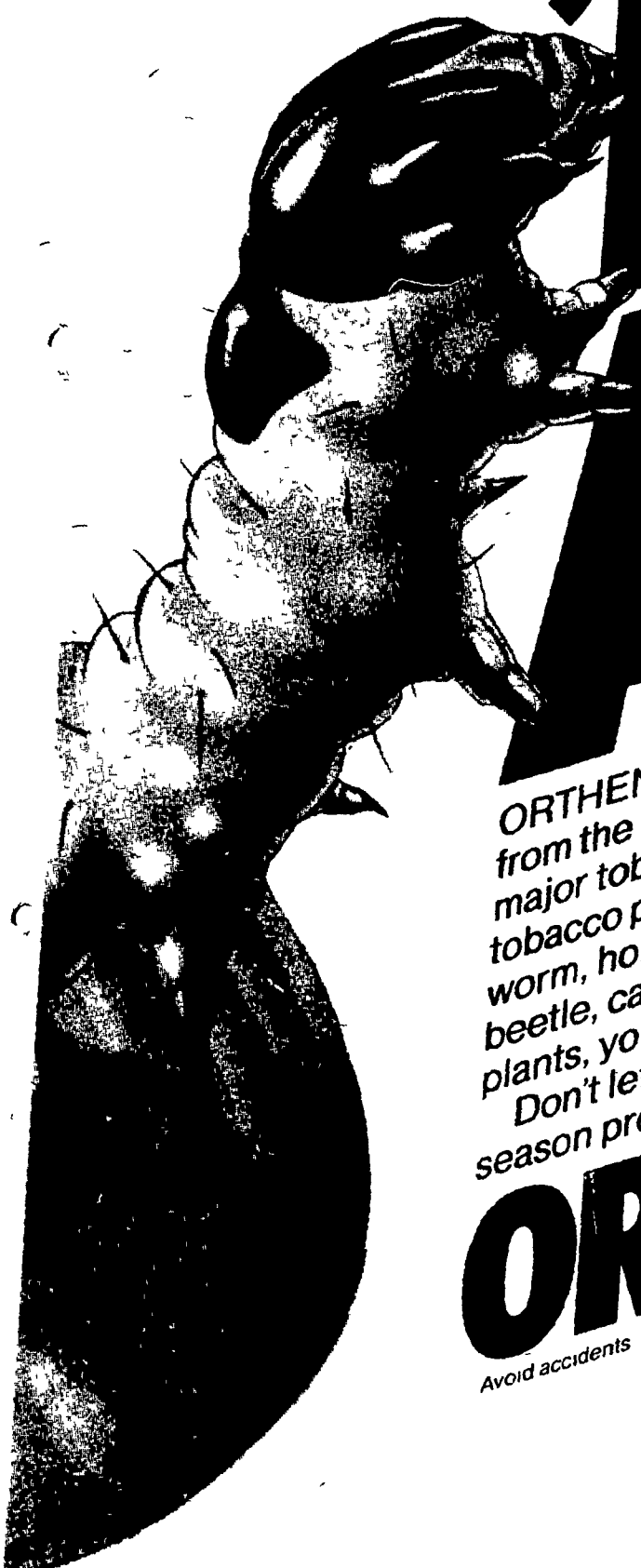


# NAIL 'EM ALL



ORTHENE® Tobacco Insect Spray protects your tobacco leaf quality from the plant bed to the curing shed. ORTHENE knocks out every major tobacco-damaging insect, even green peach aphid, the No. 1 tobacco pest. You can also count on ORTHENE to wipe out tobacco budworm, horgworm, cutworm (North Carolina and Kentucky only), flea beetle, cabbage looper and grasshoppers. Yet it's so gentle to tobacco plants, you can spray for aphids and flea beetles right in the plant bed! Don't let insects cut into your leaf quality. Nail 'em all with a full-season program of ORTHENE.

## ORTHENE ON TOBACCO

Avoid accidents For safety read the entire label including precautions Use all chemicals only as directed

