

# Ag aid to Korea ends

WASHINGTON, D.C. — The Republic of Korea, which has received more than \$2 billion in Public Law 480 Title I and Title II agricultural assistance over the past 26 years, has ended its last assistance agreement with the United States and subsequently will buy only on commercial terms.

Alan T. Tracy, general sales manager for the U.S. Department of Agriculture's Foreign Agricultural Services, says Korea is a prime example of the market development benefits to the United States and the recipient country as a result of the P.L. 480 program.

"A title I recipient since 1955, Korea has developed internally and has grown into the seventh largest market in the world for U.S. agricultural products," Tracy says. "U.S. agricultural exports to Korea have grown from \$42.8 million at the outset of the program in 1955 to \$1.6 billion in

fiscal 1980.

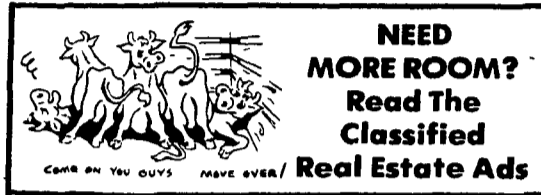
Korea was the United States' largest export market for rice in fiscal 1980 with purchases of nearly \$220 million. Its cotton purchases of \$474 million and hides and skins purchases of \$93 million put it in third and fourth place, respectively, for these commodities.

Other major U.S. agricultural exports to Korea in fiscal 1980 were: wheat and wheat products, \$287 million; feed grains, \$271 million; soybeans and soybean products, \$121 million; tallow, \$55 million; and tobacco, \$45 million.

During 1955-81, the United States provided Korea with \$1.66 billion in concessional credits under the P.L.

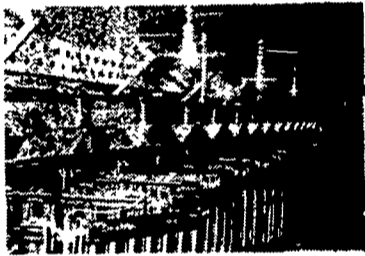
480 Title I program and \$405 million worth of food grants under Title II.

The final P.L. 480 loan for the purchase of \$27 million worth of U.S. wheat was signed in Seoul on May 18 by Korea's Deputy Prime Minister Byong Hyun Shin. Minister Shin said the signing of the loan agreement marked both the beginning as well as the end of an era. While the P.L. 480 program in Korea was being phased out, Shin saw the occasion as "the beginning of a new approach to cooperation in the agricultural sector" between the United States and Korea.



**TRUST THE LEADER IN HOG CONFINEMENT SYSTEMS!**

## EQUIPMENT & SYSTEMS FOR GESTATION, FARROWING, NURSERY, AND FINISHING

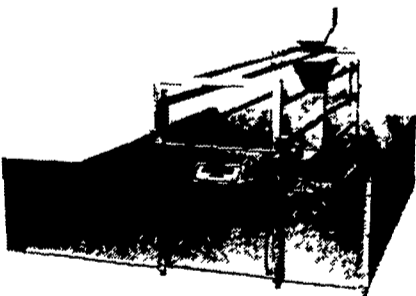


**YOUR KEY TO HIGHER PROFIT!**  
NORTHCO is A Pioneer in Hog Confinement So The Complete System is Designed From Years Of Experience With Proven Performance.



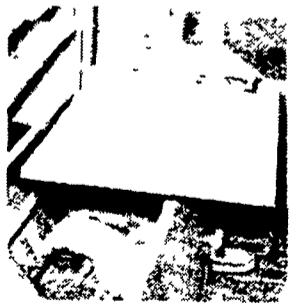
### FEED CONVEYING

Automatic Feed Delivery From Bulk Bin To Farrowing Crates is Simple And Efficient With NORTHCO'S Flex-Core Fill System.



### FARROWING CRATE

NORTHCO'S Farrowing Crate is Designed For Sow Comfort, Baby Pig Protection And For Your Convenience...Easy to Clean, Sturdy & Versatile.



### GAS PIG BROODER

Our NORTHCO Pig Brooder Installed Between Two Farrowing Crates Keeps Both Litters Warm. Heat is Evenly Distributed — No Hot or Cold Spots.

FOR MORE INFORMATION, CALL COLLECT...

**E**BERSOLE EQUIPMENT & SUPPLY COMPANY

**JOHN R. EBERSOLE**  
Contractor & Builder

RD 5, Box 190, Manheim, Pa. 17545  
Phone 717-665-4201 or 738-1305

RD 5, Box 190, Manheim, Pa. 17545  
Phone 717-665-6861

See your nearest

**SPERRY NEW HOLLAND**

**Dealer for Dependable Equipment and Dependable Service:**

**Alexandria, PA**

Clapper Farm Equipment Star Route 814 669-4465

**Annville, PA**

B H M Farm Equipment, Inc R D 1 717-867-2211

**Beavertown, PA**

B&R Farm Equipment, Inc RD 1, Box 217A 717 658-7024

**Bernville, PA**

Stanley A Klopp, Inc Bernville, PA 215-488-1510

**Carlisle, PA**

Paul Shovers, Inc 35 East Willow Street 717-243-2686

**Catawissa, PA**

Abraczinskas Farm Equipment, Inc R D 1 717-356-2323

**Chambersburg, PA**

Clugston Implement, Inc R D 1 717-263-4103

**Daidsburg, PA**

George N Gross, Inc R D 2, Dover, PA 717-292-1673

**Elizabethtown, PA**

Messick Farm Equipment, Inc Rt. 283 - Rheem's Exit 717-367-1319

**Gettysburg, PA**

Yingling Implements R D. 9 717-359 4848

**Greencastle, PA**

Meyers Implement's Inc 400 N Antrim Way P O Box 97 717-597-2176

**Halifax, PA**

Sweigard Bros R D 3, Box 13 717 896-3414

**Honey Brook, PA**

Dependable Motor Co East Main Street 215 273-3131 215 273-3737

**Honey Grove, PA**

Norman D Clark & Son, Inc Honey Grove, PA 717 734-3682

**Hughesville, PA**

Farnsworth Farm Supplies, Inc 103 Cemetery Street 717 584-2106

**Lancaster, PA**

L H Brubaker, Inc 350 Strasburg Pike 717-397-5179

**Lebanon, PA**

Evergreen Tractor Co, Inc 30 Evergreen Road 717-272-4641

**Lititz, PA**

Roy A Brubaker 700 Woodcrest Av 717-626-7766

**Loysville, PA**

Paul Shovers, Inc Loysville, PA 717-789-3117

**Lynnport, PA**

Kermit K Kistler, Inc Lynnport, PA 215 298-2011

**Martinsburg, PA**

Forshey s, Inc 110 Forshey St 814 793-3791

**Mill Hall, PA**

Paul A Dotterer R D 1 717-726 3471

**Nazareth, PA**

Edwards Farm Equipment 291 West Moorestown Rd 215-759 0240

**New Holland, PA**

A B C Groff, Inc 110 South Railroad 717-354-4191

**New Park, PA**

M&R Equipment Inc P O Box 16 717 993 2511

**Oley, PA**

C.J Wonsidler Bros R D 2 215-987 6257

**Palm, PA**

Wentz Farm Supplies, Inc Rt 29 215-679 7164

**Pitman, PA**

Martin W Schreffler Pitman, PA 717-648 1120

**Pleasant Gap, PA**

Brooks Ford Tractor W College Ave 814-359-2751

**Quarryville, PA**

C E Wiley & Son, Inc 101 South Lime Street 717-786-2895

**Reedsville, PA**

Big Valley Sales & Service, Inc P O Box 548 717-667-3944

**Ringtown, PA**

Ringtown Farm Equipment Ringtown, PA 717-889-3184

**Shippensburg, PA**

R B Miller, Inc N Seneca St 717 532-4178

**Silverdale, PA**

I G Sales Box 149 215 257-5135

**Tamaqua, PA**

Charles S Snyder, Inc R D 3 717-386 5945

**West Chester, PA**

M S Yearsley & Son 114-116 East Market Street 215 696-2990

**West Grove, PA**

S G Lewis & Son, Inc R D 2, Box 66 215-869-2214

**Churchville, MD**

Walter G Coale, Inc 2849-53 Churchville Rd. 301-734-7722

**Rising Sun, MD**

Ag Ind Equipment Co, Inc 1207 Telegraph Rd 301-398 6132 301-658-5568 215-869-3542

**Bridgeton, NJ**

Leslie G. Fogg, Inc Canton & Stow Creek Landing Rds R D 3 609 451 2727

**Washington, NJ**

Frank Rymon & Sons 814-793-3791

**Woodstown, NJ**

Owen Supply Co Broad Street & East Avenue 609-769 0308