

ABSOLUTE AUCTION INVENTORY LIQUIDATION

MONDAY, JUNE 15
10:00 A.M.

S.E. IOWA ALLIS CHALMERS,
MUSCATINE, IOWA.

Sale Site: Highway 92 & U.S. 61 West,
Adjacent to Koser Equipment, Inc.
Muscatine, Iowa. 28 Miles West of
Davenport, 36 Miles S.E. of Iowa City.
1 1/2 Miles East of Airport, Muscatine.

TRACTORS: A.C. 1975 7040; 1975 7000, no cab;
1965 190 XT D, overhauled; 1978 7040 PS; 1948
w/mower, plow & cult.; 1976 175; 1967 190 Gas
w/cab 3 pt.; 1976 7060; 1978 7020; 170 G w/model
500 ldr.; 1968 190 XT D w/cab, 200 hrs. on
overhaul; 190 XT gas w/cab; 1977 7080 w/cab,
air, duals; 1976 7060; 1973 200 w/cab; 180 D;
Farmhand L & G; M.M. G-900; M.M. G-1050
w/cab; 1977 A.C. 7580, 20.8 duals, 3 pt., cab &
air, 1400 hrs.; 1978 A.C. 8550, 20.8 duals, 3 pt.,
cab & air, 1500 hrs.; 1978 Late A.C. 8550, Brand
new 20.8 duals, 3 pt., cab & air, 500 hrs.

COMBINES: 1968 J.D. 55 w/13' grain head;
I.H. 403 w/12' grain head; 2-1974 N.I. 717; 1975
A.C. MKS gas; 1974 A.C. FKS gas; 1966 M.F.
410 gas; 1966 Case 1160 gas; 1970 A.C. G; 1968
A.C. G; 1969 M.F. 300 gas; Gleaner FKS; 1964
All Gleaner; 1974 A.C. MKS; 1976 Gleaner
LKS; 1975 Gleaner MKS; 1968 J.D. 55 EB;
Gleaner LKS 2; 1975 Gleaner LKS; 1970
Gleaner GKS D; 1969 N.H. 995; 1974 Gleaner
MKS.

CORN HEADS: LM 438; J.D. 313; N.I. 744; LM
430; N.I. 730; LM 438; A.C. 438; M.F. 44; Case
404; A.C. 438; A.C. 440; M.F. 222; A.C. F430;
A.C. GL 440; A.C. E-3 240; A.C. LM 430; A.C. 2
row; A.C. 440; A.C. 630A 30"; A.C. M 438; A.C.
LM 630; A.C. LM 438; A.C. LM 630; A.C. 440;
A.C. G-630; A.C. F-440; A.C. LM 438; A.C. LM
630; A.C. LM 438; A.C. LM 438 adj.; A.C. 630;
A.C. 438; A.C. 630; A.C. 438; A.C. 438.

GRAIN HEADS: E 13' header; 2-A.C. 13' grain
heads; 4-A.C. 13' w/floating cutter bar; M.F.
13'; Case 13'; Gleaner 13' FCB; Gleaner 14';
A.C. FCB; A.C. 20'; A.C. 15'; J.D. 13'; Gleaner
FCB 16'; Gleaner FCB 13'; N.H. 15'; Gleaner
16'; Gleaner LM 14' FCB; Gleaner 20' FCB;
Gleaner GKS 15'; Gleaner L20' FCB.

PLANTERS: A.C. 770 4 row; J.D. 1240 4 row;
J.D. 1240 4 row; J.D. 4 row.

NEW EQUIPMENT: A.C. 2300 17' disc; A.C.
planter frame only, model 1770; A.C. 770
planter, air unit, hyd. market & monitor; A.C.
770 planter, air unit, insect., hyd. marker; A.C.
1600 pull type 10' chisel plow; A.C. 1600 pull
type 13' chisel plow; A.C. 620 7 shank subsoiler;
Kewanee pull type 13' chisel plow.

TILLAGE EQUIPMENT: Stanhoist 19 1/2' field
cult.; Stanhoist 24 1/2' field cult.; A.C. 4x S/C
plow; Kewanee 18' field cult.; A.C. 5x 3 pt.
plow; A.C. 4 row Model 94 cult.; J.D. BW disc.

INDUSTRIAL: I.H. Model 500 crawler
w/loader.

MISCELLANEOUS: N.I. 60' elevator; N.I. 727
husker; Freeman 8' rear blade; Kewanee 4
sect. rotary hoe; 42" mower & front blade; A.C.
2300 19' disc harrow; A.C. 405 riding lawn
mower; Fertilizer boxes & attach.; A.C. 4 row;
50" roto-tiller and drive; Mtd. 3 blade Woods
mower; 5 HP Walk behind tiller A.C.; 3 pt. mtd.
rear blade; J.D. silage wagon; 60" bucket; 40'
auger; J.D. loader; Simplicity 4211; A.C. 716
hydro w/48" mower; A.C. HB 112 w/42"
mower; 2-1974 N.I. 704 pickups. J.D. No. 6
sheller, All hyd. mounted on 1971 Ford F500
w/40 ft. drag. A01 Condition.

NOTE: All the above equipment is owned by
Allis Chalmers Corp. and several local dealers.
This is undoubtedly one of the cleanest
selections of A.C. equipment we have had the
opportunity to sell. Don't miss this opportunity
to purchase from a wide selection of 2 & 4 wheel
drive tractors, combines, corn heads, tillage
equipment & misc. equipment at Absolute
Auction. A few items subject to prior sale.
Other items by sale day. Tractors, combines
and equipment will be mixed in lines and
selling all day.

TERMS: Cash or good check. A.C. financing
available on qualified items to qualified
buyers.

SALE CONDUCTED BY
MIDWEST AUCTION COMPANY
Grand Meadow, Minn.
Grand Meadow, Mn.

For More Information Contact
Con Clement Midwest Auction Co.
Jeff Hegge Baxter, Iowa
507-754-5121 515-227-3334

Pat Patterson 515-967-4257
After June 8 Sale Site Phone 319-263-8592

PUBLIC SALE FARM, RANCHER, WOOD LOT THURSDAY, JUNE 25, 1981 At 6:00 P.M.

The undersigned located along Shaffer
Road, Codorus Twp., York Co., PA. 1 mile
west of Shaffer's Church & 2 miles east of
Jefferson Borough (Shaffer Road in-
tersects Buffalo Valley Rd. & Shaffer's
Church Rd.), will offer at public sale on
the premises the following:

FARM - TRACT #1

Farm containing 69.1 A., more or less, im-
proved with 3 bedroom frame dwelling having
1/2 bath on first floor and full bath on second
floor, 2 story summer house with fireplace &
running water, large bank barn, 2 wagon sheds,
large 2 story block chicken house, frame
chicken house, 6 pen hog sty, garage with
ground cellar, & utility buildings. This farm
has hard road frontage, a meadow with a
stream running through, and good farming
ground.

RANCHER - TRACT #2

3 bedroom brick rancher with a breezeway &
2 car garage attached, having large kitchen
with bar, adequate cabinets, dishwasher &
range, living room, bath with shower,
fireplace, oil fired hot water central heat,
thermal glass throughout, and wall to wall
carpet. This dwelling was constructed 8 years
ago and is erected on a parcel containing 1.2839
Acres, more or less. Tract #2 adjoins Tract #1,
fronting Shaffer Road.

WOOD LOT - TRACT #3

Wood lot having an area of 10 A., more or
less, with assorted medium timber. This tract
is located close to Greenmount U.M. Church.

For information and inspection call area
code 717 229-2240.

TERMS: REAL ESTATE - 10% Down,
Balance within 45 days.

Tract #1 and #2 will be offered at site
locations. Tract #3 will be offered at Tract #2.

**RAYMOND J. SHARP
LAURA E. SHARP**

J. Ross McGinnis, & Mark D. Frankel,
Attorneys at Law
C.C. Miller & Sons - Auctioneers & Clerks
Ph. 717-235-3627

CONSIGNMENT AUCTION

MONDAY, JUNE 8, 1981
9:30 A.M.

★ Usual Run of Tractors, Machinery and
Construction
★ Hay Tools are In Season

**WE ACCEPT
CONSIGNMENTS
ANYTIME**

Tractors sell at
approximately 2:30
followed by
construction

WENGER'S FARM MACHINERY, INC.

S. Race Street, Myerstown, PA 17067
717-866-2135

PUBLIC AUCTION WEDNESDAY, JUNE 10th

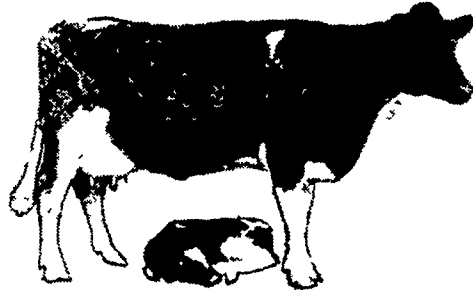
At 5:30 P.M.

Southern Manheim Twp. Fire Hall
Fruitville Pk. & Orchard Sts. Lancaster,
Pa.

Straw & Rye baskets, carnival creamers
(Peacock), Shirley Temple creamers, tin quilt
patterns, crocks, oil lamps, old tin ice cream
scoop, thimbles, very old tin miners lamp,
steamer trunks, jardiniere's, 5-R.R. lanterns,
old sm. bisque dolls, 2 tin doll houses, 7 pc.
green Columbia berry set, min. dry sink, toy
cars & trucks, pictures, pressed & pattern
glass, bowls, plates etc., Mr. Peanut set, glass
basket, flat irons, trivets, iron fireside cat, hen
bank, paper weight (Mt. Gretna trolley), ruby
cup (1863), ruby tumbler (1893), clay & glass
marbles, iron gypsy pot, griddles, spatula,
meat saws, childs rocker, and bentwood chair,
childrens books, Many more items.

Sale For
**RALPH M. SMITH
MAE I. SMITH**

Auctioneer
John H. Cooper
665-5839



COMPLETE MD HERD DISPERSAL

SHADY LANE DAIRY SALES, INC.

1/4 mile west of Quarryville, PA off Rt. 372 on Oak Bottom Rd.

FRIDAY NIGHT, JUNE 12

8:00 p.m. D.S.T.

80 Head of Registered & High Grade Holstein Cattle

This herd consists of 45 head of mature Holstein cows and
1st calf heifers, 10 recently fresh, 6 springing. The balance due
mostly Sept., Oct., & Nov. These cows are averaging 50 lb. at
the present time. They show a lot of size and have well at-
tached udders. 30 head of Registered & High Grade Holstein
top dairy cows, some milking to 80 lb.

Dairymen & Dealers - this is a sale where you can buy from
this herd, whatever you want, your price is ours. We know this
is a busy time but it will be worth your time and effort to make
this sale. 30 day TB and blood test. Pregnancy examined.

SHADY LANE DAIRY SALES, INC.

RD4, Quarryville, PA

Owners

Glenn D. Fite
717-786-2750

David L. Fite
717-786-1725

P.S. We still need 200 head of cows bred 3 to 5 months. Only
requirement - safe with calf and good udders.

Sale Reports

A public auction to
antiques and wagons
was held May 30 for the
estate of John A. Swack,
off Route 1 on Fremont
Rd.

Prices included: 2-
seat surrey with fringe
\$1900, Doctor's buggy
\$800, Conestoga wagon
\$900, other wagons \$320
to \$460, anvils \$105 to
\$200, broad axe \$40,
forge & blower \$145,
wheels & axle \$150, 4
brass hinges \$220,
firebox \$100, heavy duty
vise \$85 and home-made
driveway chain \$100.

Kreider & Kline
Auctioneers & Gary
Shirk.

xxx

A public auction of
antiques and collec-
tibles was held May 30
by George Frees, 2
miles south of Bloom-
sburg in the village of
Rupert.

Items sold were:
walnut bed \$345, marble
top stand \$220, 3 Shirley
Temple mugs \$45 each,
glass vase \$42.50, 10"
Brunese vase \$85, Gate-
leg cherry table \$240,
coverlet \$115, 2 jelly
cupboards \$250 each,
chestnut washstand
\$230, oak chest of
drawers \$250, small
spool cradle \$110, can
rocker \$50 and large
oval table \$72.50.

Hock's Auction
Service conducted the
sale.

xxx

A public auction of
furniture was held May
30 for Lottie M. Becker,
south of Parkerford in
Chester Co. There were
approximately 400
people present.

Items sold were: slant
top desk \$2350, walnut
mirror \$350, 1 pc.
Tolaware \$200, 4
miniature pigs \$150, oak
bedroom suite \$550, rope
bed \$200, German
bisque doll \$400, wicker
doll coach \$160 and
child's clothes up to \$40
apc.

Nelson C. Weiden-
baugh was the auc-
tioneer.



**STRIKE
IT
RICH!**

**SELL
IT
WITH
A**

**LANCASTER
FARMING
CLASSIFIED**

