

1981 Fair Schedule

(Continued from Page E21)

18-22	Newport	Perry County Fair
19	Whitneyville	Northeastern PA Holstein Championship Show
19-22	Northampton	Allen Township Community Fair
20-22	Ohio Township	Mount Nebo Grange Fair
22	Huntingdon	Central PA Holstein Championship Show
23-29	Lehighton	Carbon County Fair
23-29	Meyersdale	Somerset County Fair
24-29	Gilbert	West End Fair
24-29	Greensburg	Westmoreland County Fair
24-29	McConnellsburg	Fulton County Fair
24-29	Meadville	Crawford County Fair
24-29	Mount Pleasant	Bullskin Township Community Fair
24-29	Transfer	Harvest Home Fair
25-27	State College	Ag Progress Days
25-29	Hookstown	Hookstown Grange Fair
26-30	Pittsburgh	Allegheny County Fair
28-Sept. 3	Centre Hall	Centre County Grange Fair
31-Sept. 5	Indiana	Indiana County Fair
31-Sept. 5	Wattsburg	Wattsburg Fair
SEPTEMBER		
1-5	Forksville	Sullivan County Fair
1-7	Allentown	Allentown Fair
1-7	Newfoundland	Greene-Dreher-Sterling Fair
2	Bloomsburg	PA State Holstein Championship Show
2-5	Rochester	Big Knob Grange Fair
2-7	Stoneboro	Great Stoneboro Fair
5-12	Port Royal	Juniata County Fair
6-12	Ebensburg	Cambria County Fair
7-12	Arendtsville	South Mountain Fair
7-12	Home	Ox Hill Community Fair
7-12	Spartansburg	Spartansburg Community Fair
7-12	Waterford	Waterford Community Fair
8-11	Claysburg	Claysburg Fair (Greenfield Township Fair)
8-12	Jamestown	Jamestown (Pymatuning Fair)
9-13	Dallas	Luzerne County Fair
11-19	York	York Inter-State Fair
14-17	Bellwood	Bellwood Antis Farm Show

14-18	Beaver Springs	Beaver Community Fair
14-19	Commodore	Green Township Fair (Cookport Fair)
15-19	Albion	Albion Area Fair
15-19	West Alexander	West Alexander Fair
16-18	Quarryville	Southern Lancaster County Community Fair
16-19	Berlin	Berlin Brothersvalley Fair
16-19	Skelp	Sinking Valley Community Fair
17-19	North East	North East Community Fair
17-19	Oley	Oley Valley Fair
20-26	Gratz	Gratz Fair
21-24	Williamsburg	Williamsburg Farm Show
21-25	Harrisburg	All American Dairy Show
21-26	Reading	Reading Fair
22-26	Ephrata	Ephrata Fair
22-26	Westover	Harmony Grange Fair
23-25	Lampeter	West Lampeter Fair
28-Oct. 3	Bloomsburg	Bloomsburg Fair
29-Oct. 2	Martinsburg	Morrison Cove Community Fair
29-Oct. 3	Elizabethtown	Elizabethtown Community Fair
30-Oct. 3	New Holland	New Holland Farmers Fair
OCTOBER		
1-4	Hegins	Tri-Valley Community Fair
2-6	Harrisburg	Keystone International Livestock Exposition
5-8	Hollidaysburg	Hollidaysburg Community Fair
5-9	Manheim	Manheim Community Fair
7-10	Unionville	Unionville Community Fair
15-17	Dillsburg	Dillsburg Community Fair
NOVEMBER		
27-29	Uniontown	Uniontown Poultry & Farm Show
DECEMBER		
5-9	Hershey	PA Young Farmers Institute & Convention
JANUARY 1982		
10-15	Harrisburg	Pennsylvania Farm Show

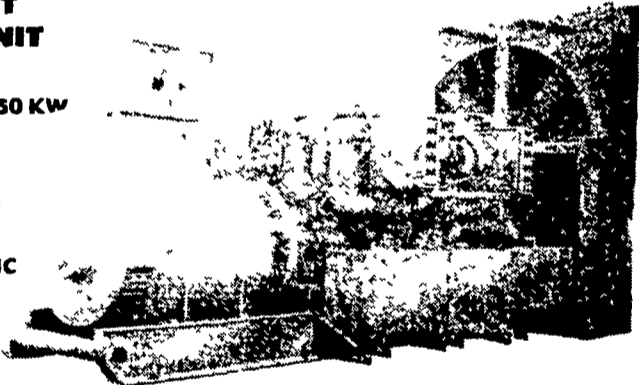


ELECTRIC GENERATOR SYSTEMS

- DAIRY FARMS • POULTRY FARMS
- FARROWING HOUSES • CONTRACTORS • ETC

**DETROIT
DIESEL UNIT**
SIZES
60 KW to 1050 KW

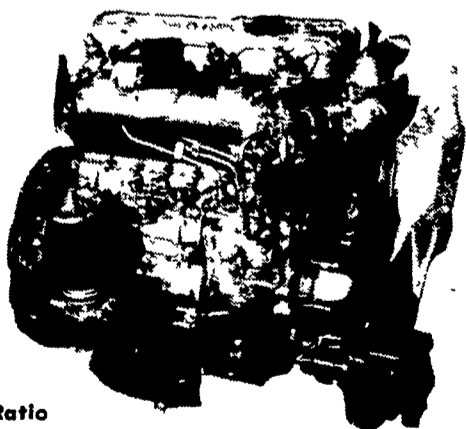
MANUAL
OR
AUTOMATIC



**ISUZU
DIESEL ENGINES**

FOR AUTOMOTIVE
AND INDUSTRIAL
APPLICATIONS

- SIZES
10 KW to 60 KW
18 HP to 211 HP
- High Speed • Low Fuel Consumption
 - High Power to Weight Ratio



AUTOMOTIVE ENGINES ARE EPA APPROVED

WE BUILD L.P. GAS
GENERATOR SETS

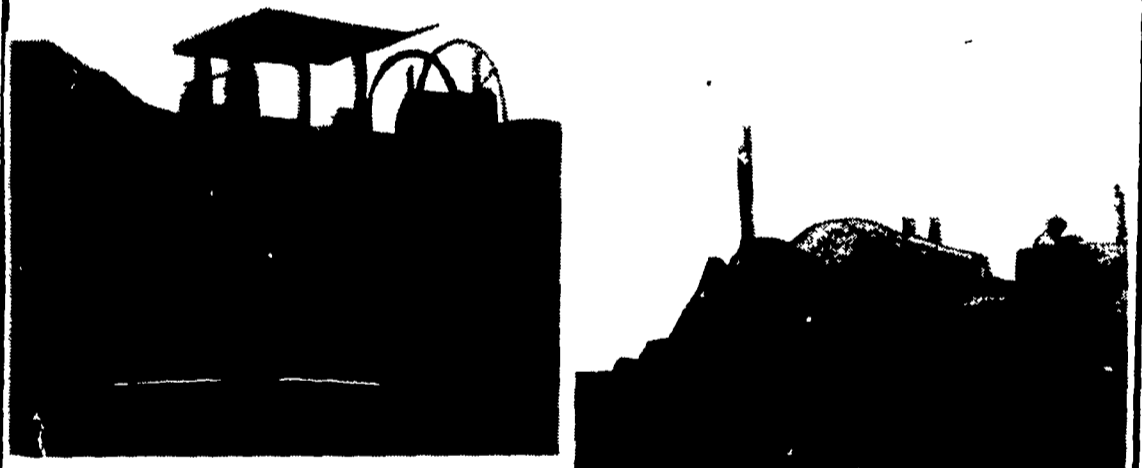
REBUILT GENERATOR
SETS ON HAND

15
YEARS
OF
EXPERIENCE

MARTIN ELECTRIC PLANTS

ISSAC W. MARTIN, OWNER
PLEASANT VALLEY RD., RD 2 EPHRATA, PA (717) 733-7968

DRAINAGE PROBLEMS?



**COCALICO EQUIPMENT HAS THE TWO MACHINES TO
HANDLE YOUR DRAINAGE PROBLEMS.**
★ Both machines Equipped with Laser Beam Grade Control

Drainage Pays High Returns

Investment	Typical Annual Return
Land Drainage	21-46%
Farm Buildings	3-23%
Farm Land	11%
Stocks	7-4%
Bonds	6-1%

COMPARE

Even with the conservative figures shown here, it's obvious that land drainage should top farmers' lists of investment priorities.

- ★ We Stock Heavy Grade Tubing which Exceeds SCS Specifications. In sizes 4", 6", 8", 10" and 12".

**NOW AVAILABLE
15" & 18" Tubing**



- ★ Also Pipe And Fittings For Tile Outlet Terraces.



COCALICO EQUIP. CO.

DRAINAGE & EXCAVATING

RD #3, DENVER, PA 17517 PH: 215-267-3808

