

# Bedford Co. DHIA

(Continued from Page E11)

|                       |    |   |        |      |
|-----------------------|----|---|--------|------|
| 282                   | 4  | 3 | 19,756 | 756  |
| 295                   | 3  | 3 | 17,753 | 637  |
| Robert H Beach        |    |   |        |      |
| 190                   | 5  | 3 | 15,183 | 606  |
| 196                   | 4  | 3 | 13,731 | 633  |
| J Allen Baker         |    |   |        |      |
| Sprwgf                | 4  | 3 | 15,954 | 713  |
| Elwood & Rich Smith   |    |   |        |      |
| Jill                  | 4  | 3 | 17,472 | 677  |
| 1                     | 5  | 3 | 17,287 | 702  |
| 142                   | 4  | 3 | 14,301 | 616  |
| Ray Snyder            |    |   |        |      |
| Helen                 | 4  | 3 | 15,831 | 654  |
| Ralph E Ritchey       |    |   |        |      |
| Sandra                | 8  | 3 | 18,954 | 642  |
| Dwight Kagarise       |    |   |        |      |
| Peppy                 | 5  | 3 | 14,060 | 682  |
| Byron Over            |    |   |        |      |
| Jewel                 | 4  | 3 | 20,237 | 757  |
| Dara                  | 4  | 3 | 25,612 | 864  |
| Dorrie                | 2  | 3 | 15,508 | 631  |
| Bernard Hershberger   |    |   |        |      |
| 26                    | 5  | 3 | 17,719 | 610  |
| Obie Snider           |    |   |        |      |
| Vivian                | 11 | 3 | 17,264 | 617  |
| Mona                  | 5  | 3 | 17,986 | 618  |
| Andie                 | 3  | 3 | 15,839 | 633  |
| Lynn                  | 2  | 3 | 16,208 | 700  |
| Harold K Corle        |    |   |        |      |
| Bell                  | 6  | 3 | 18,916 | 616  |
| Bunny                 | 6  | 3 | 20,474 | 698  |
| R Clair & Alan Koontz |    |   |        |      |
| Tammy                 | 7  | 3 | 17,479 | 678  |
| Gatesway Farms        |    |   |        |      |
| 39                    | 6  | 3 | 18,799 | 660  |
| Jerry L Hershberger   |    |   |        |      |
| 64                    | 3  | 3 | 19,209 | 742  |
| 60                    | 3  | 3 | 20,248 | 724  |
| Onna                  | 8  | 3 | 19,562 | 773  |
| 81                    | 3  | 3 | 21,757 | 956  |
| 35                    | 2  | 3 | 21,834 | 884  |
| Harry W Wareham       |    |   |        |      |
| 49                    | 6  | 3 | 20,478 | 738  |
| 150                   | 5  | 3 | 25,289 | 1030 |
| 3                     | 4  | 3 | 19,870 | 818  |
| 28                    | 4  | 3 | 22,210 | 808  |
| 159                   | 2  | 3 | 17,316 | 789  |
| 193                   | 2  | 3 | 20,722 | 750  |
| Clarence & Ken Mowry  |    |   |        |      |
| Popsicl               | 7  | 3 | 21,534 | 973  |
| Lenna                 | 3  | 3 | 18,707 | 606  |
| Flora                 | 7  | 3 | 17,280 | 783  |
| 5                     | 4  | 3 | 17,997 | 636  |
| Anna & Henry Hall     |    |   |        |      |
| Hope                  | 6  | 3 | 18,116 | 611  |
| Dancer                | 7  | 3 | 22,702 | 794  |

|                       |    |   |        |      |
|-----------------------|----|---|--------|------|
| Larry & S Hall        |    |   |        |      |
| Dove                  | 4  | 3 | 16,920 | 621  |
| Three Spring Run Farm |    |   |        |      |
| 358                   | 5  | 3 | 15,486 | 697  |
| Paul Den              |    |   |        |      |
| Dora                  | 6  | 3 | 18,534 | 643  |
| Ann                   | 3  | 3 | 15,437 | 638  |
| Delight               | 3  | 3 | 15,789 | 663  |
| Sunny Four Farm Inc   |    |   |        |      |
| Lynne                 | 6  | 3 | 19,332 | 729  |
| Mitzie                | 5  | 3 | 18,345 | 624  |
| Silly                 | 5  | 3 | 21,397 | 696  |
| Sonna                 | 4  | 3 | 21,758 | 719  |
| George Garman & Sons  |    |   |        |      |
| Tweetie               | 7  | 3 | 19,119 | 904  |
| Candy                 | 4  | 3 | 16,365 | 677  |
| S Heart               | 3  | 3 | 18,208 | 853  |
| Paul R Ritchey, Jr    |    |   |        |      |
| 5                     | 3  | 3 | 18,762 | 709  |
| 52                    | 5  | 3 | 19,491 | 803  |
| 78                    | 2  | 3 | 15,205 | 631  |
| Shaffer Farms         |    |   |        |      |
| Linda                 | 11 | 3 | 18,435 | 732  |
| Pearl                 | 10 | 3 | 17,044 | 773  |
| Tulip                 | 4  | 3 | 16,095 | 670  |
| Prude                 | 4  | 3 | 16,761 | 653  |
| Tonja                 | 3  | 3 | 16,805 | 736  |
| Anthony Wertz         |    |   |        |      |
| Fran                  | 6  | 3 | 19,876 | 651  |
| 14                    | 3  | 3 | 14,592 | 622  |
| Edward L Creps        |    |   |        |      |
| Molly                 | 5  | 3 | 16,373 | 731  |
| Eve                   | 4  | 3 | 14,008 | 685  |
| Edward A Deputy       |    |   |        |      |
| 67                    | 4  | 3 | 16,314 | 614  |
| 79                    | 3  | 3 | 17,412 | 601  |
| Allen Claar           |    |   |        |      |
| Tidy 7                | 5  | 3 | 16,261 | 781  |
| Jolly                 | 5  | 3 | 17,756 | 638  |
| JTJ Wakefield Farms   |    |   |        |      |
| 85                    | 5  | 3 | 14,446 | 611  |
| Dale A Baker          |    |   |        |      |
| Lass                  | 5  | 3 | 16,780 | 738  |
| Schanna               | 4  | 3 | 17,738 | 645  |
| Pride                 | 4  | 3 | 15,283 | 664  |
| 98                    | 2  | 3 | 16,902 | 627  |
| Robert Harclerode     |    |   |        |      |
| Lee                   | 8  | 3 | 19,536 | 698  |
| Rosie                 | 8  | 3 | 16,223 | 768  |
| Becky                 | 7  | 3 | 17,015 | 697  |
| Farmie                | 4  | 3 | 19,369 | 785  |
| Tammy                 | 3  | 3 | 16,674 | 690  |
| Daniel Smith          |    |   |        |      |
| 80                    | 4  | 3 | 14,547 | 607  |
| Andy T Mohr           |    |   |        |      |
| 44118                 | 8  | 3 | 19,163 | 777  |
| G 142                 | 4  | 3 | 18,984 | 730  |
| Bernard Snider        |    |   |        |      |
| Jessie                | 3  | 3 | 17,236 | 1063 |
| Bernard Snider        |    |   |        |      |
| Randy                 | 5  | 2 | 13,713 | 605  |

|                        |    |   |        |     |
|------------------------|----|---|--------|-----|
| Denton Clark           |    |   |        |     |
| Tina                   | 10 | 3 | 17,828 | 639 |
| Lucy                   | 3  | 3 | 17,632 | 651 |
| Larry Beach            |    |   |        |     |
| 7                      | 5  | 3 | 16,712 | 617 |
| Ray W Hinish           |    |   |        |     |
| 96                     | 4  | 3 | 18,905 | 774 |
| 246                    | 4  | 3 | 14,262 | 670 |
| Roger R Brumbaugh      |    |   |        |     |
| Kate                   | 7  | 3 | 19,482 | 704 |
| Paul H Rissler         |    |   |        |     |
| Ida                    | 4  | 3 | 21,126 | 751 |
| Edna                   | 5  | 3 | 16,772 | 644 |
| 152                    | 7  | 3 | 21,438 | 675 |
| Keith & Betty Black    |    |   |        |     |
| 30                     | 3  | 3 | 21,145 | 680 |
| James S Leidy          |    |   |        |     |
| 98                     | 6  | 3 | 19,740 | 752 |
| 99                     | 6  | 3 | 18,667 | 614 |
| 101                    | 6  | 3 | 12,584 | 602 |
| 126                    | 3  | 3 | 18,786 | 634 |
| 168                    | 6  | 3 | 20,968 | 714 |
| 186                    | 8  | 3 | 21,576 | 813 |
| 159                    | 0  | 8 | 18,416 | 666 |
| 55                     | 2  | 3 | 15,651 | 661 |
| 173                    | 0  | 3 | 14,081 | 636 |
| 154                    | 0  | 3 | 19,443 | 865 |
| 190                    | 2  | 3 | 18,218 | 632 |
| 194                    | 2  | 3 | 17,546 | 685 |
| 100                    | 2  | 3 | 16,187 | 721 |
| Clarence Reasy, Jr     |    |   |        |     |
| Rose                   | 7  | 3 | 16,573 | 690 |
| James & Laurie Stanton |    |   |        |     |
| Stella                 | 4  | 3 | 23,205 | 814 |
| Paul I Detwiler        |    |   |        |     |
| 234                    | 6  | 3 | 16,747 | 676 |
| 3                      | 6  | 3 | 20,197 | 804 |
| 65                     | 3  | 3 | 17,744 | 710 |



## ANCHOR SILAGE INOCULANTS

DRY or WATER SOLUABLE

**NEW**

GRANULAR 2X Easy Flow

1/2 Pound Per Ton 50 Lb. Bag

1 oz. in water treats 10 tons.

Most economical way to apply.

Two sizes: 5 oz. to 30 oz.

- The natural way to preserve haylage or silage
- No chemicals or drugs
- Keep your protein, dry matter, energy
- Reduce shrink and improve palatability with ANCHOR'S NATURAL SILAGE INOCULANTS

Ask About **ANCHOR'S FREE VACCINES and GIFT OFFERS**

**ROBERT BOYER**  
RD 9, Box 496  
Carlisle, Pa 17013  
717-249-1195 or  
717-776-5335 or  
249-1253

**J.G. AGRI-SERVICE**  
RD 6  
Manheim, Pa 17545  
717-665-6727

**J. MELVIN WENGER**  
RD 1, Box 312  
Elizabethtown Pa 17022  
717-367-2126

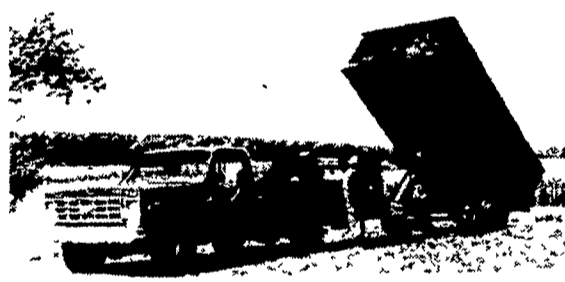
**ELWYN KIE/AGRI-SERVICE**  
P O Box 153, 2 E South Ave  
Canton, Pa 17724  
717-673-8102

**ARTHUR BRANDT**  
1600 King St  
Lebanon PA 17042  
717-273-7063

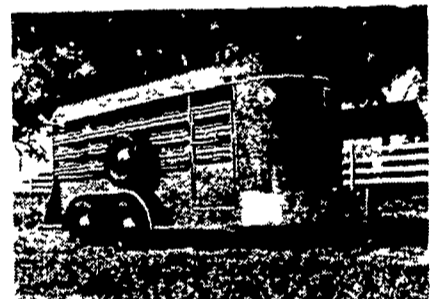
**ANCHOR**

## FISHER AND STOLTZFUS TRAILER SALES

Call 717-768-3832 between 7 a.m. & 9 a.m.  
or call 717-354-0723 after 6 p.m. East of New Holland, Pa.



Grain Trailer Comes 8'x16' & Has 40" Grain Sides



Specials - 6x16 Bumper Trailer w/Canvas - \$2395  
Small trailers for tractors

Sealcrete can paint your farm buildings quickly and inexpensively...

Call for Free estimate



Contact **Amos Gehman, Salesman**

**Seal Crete, Inc.**  
RD2, Ephrata, PA  
717-859-1127



HYDRAULIC AERIAL EQUIPMENT