

# Moor

(Continued from Page C36)

cutting down on the labor requirement for milking. Sanitation also is the reason Barbara chose easy-to-clean plastic paneling for the barn's interior walls.

In the barn, grooved concrete floors were installed to keep the cows from slipping with asphalt floors for the free-stalls. Haenlein notes the asphalt floors keep the cows from digging up their stalls.

Modern technology is evident in the new feeding system too. Large tanks hold corn silage, whole grain corn and supplement. The ingredients move on conveyor belts, are weighed on electronic scales and mixed at the rate of 800 pounds corn, 400 pounds supplement, 1000 pounds silage, and a

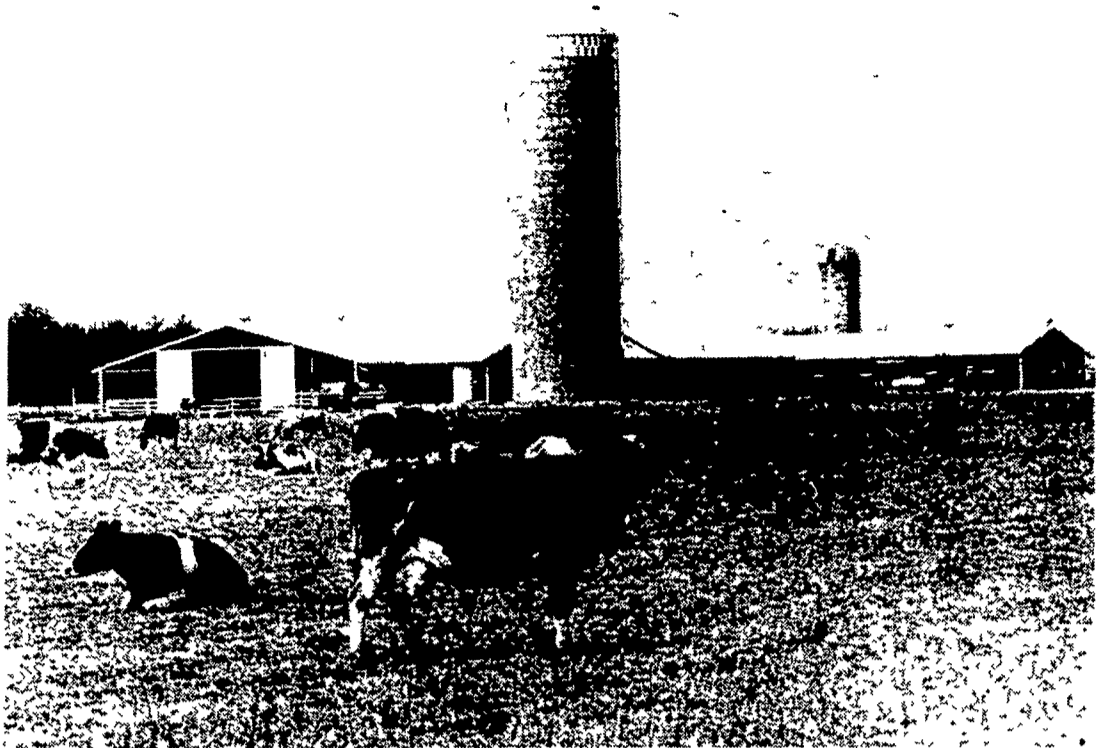
scoop of baking soda, minerals, and salt.

These are the rations for high-producing cows, which are kept

separate from the lower producers. The low producers don't get as much protein. Conveyor belts carry the right feed to the right cows.

On the way, all the feed passes over a large magnet. At \$300, the Moors said it seemed rather expensive but they took Bennett's advice and bought it anyway. Now they say it's one of the best investments they made. The magnet has picked up tiny metal filings and jagged machine parts that could have killed cows.

The Moors say they are totally pleased with the design, construction and operation of their new facility. Needless to say, such an operation doesn't come cheap.



The Moors' new dairy barn features 145 free stalls in a double-six herringbone pattern. Along with their modernized dairy operation, they farm 2,000 acres, raising corn, soybeans, wheat, peas, lima beans, and sweet corn.

## CATTLE SALES

- ★ Dairy Replacements
- ★ Registered & Grade Holsteins
- ★ Canadian & NY State Holsteins
- ★ 300 Holsteins to Choose From
- ★ Heifers of All Ages

**WE ALSO BUY  
COWS & HEIFERS**

Contact:  
**Charles D. Blaisure**  
Meshoppen, PA  
717-833-2684 or 833-5624



## OVERSTOCK TRACTOR TIRES

Must Sell For Cash

- 13.6x38, 6 ply ..... \$191.15
- 15.5x38, 6 ply ..... \$220.72
- 18.4x38, 8 ply ..... \$364.12
- 20.8x38, 8 ply ..... \$530.00
- 18.4x34, 6 ply ..... \$289.00
- 16.9x30, 6 ply ..... \$224.00
- 18.4x30, 6 ply ..... \$262.00
- 14.9x28, 6 ply ..... \$173.00
- 13.6x28, 4 ply ..... \$140.00
- 16.9x28, 6 ply ..... \$210.00
- 16.9x34, 6 ply ..... \$250.00

★ Above tires are original equipment type. Federal Tax is included in above price.

### NEW TIRES - OTHER BRANDS:

- (2) 20.8x38, 8 ply ..... \$500 ea.
- (2) 14.9x28, 6 ply ..... \$165 ea.
- (1) 14.9x24, 6 ply Kelly .. \$110.00
- (1) 16.9x28, 6 ply Kelly .. \$175.00
- (1) 16.9x34, 6 ply ..... \$210.00
- (2) 24.5x32 Takeoff ..... \$620 ea.
- (1) 24.5x32 New BF Goodrich ..... \$500.00
- (1) 15.5x38 Seib., 6 ply .. \$175.00
- (1) 18.4x38, 6 ply Farmhand ..... \$250.00

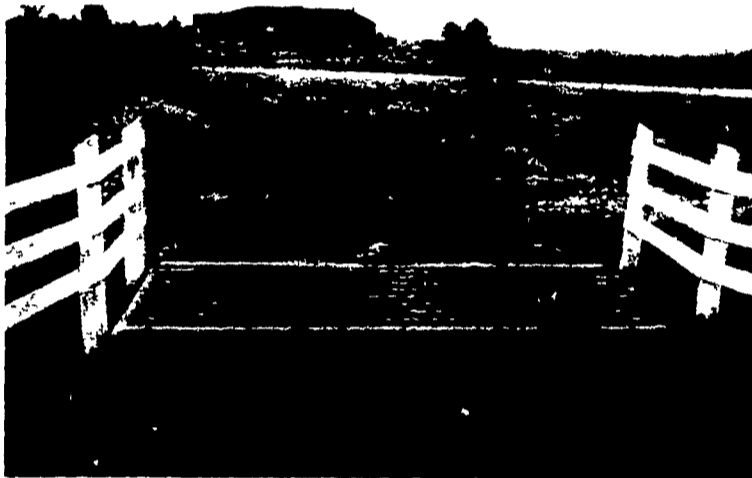
### USED TIRES:

- (2) 8.3x34, Very Good .... \$ 55 ea.
- (2) 18.4x42 Goodyear .... \$400 ea.
- ★ We Stock Grass Tires
- ★ Used Duals in stock
- ★ New Duals at dealer prices

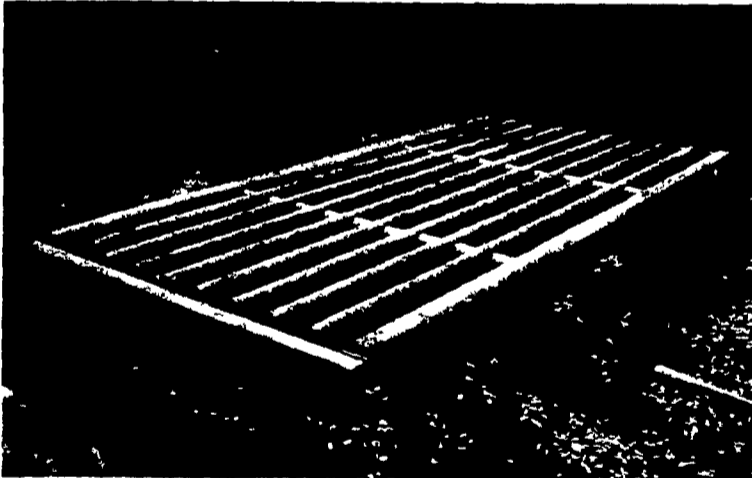
## MUMMAU'S FIRESTONE

Mount Joy, PA  
717-653-1260

## The SMITH CATTLEGUARD® NOW AVAILABLE IN BETHEL, PA.!



Saves a Lifetime of Gate Opening



Simple Installation

The SMITH CATTLEGUARD was developed in Virginia 20 years ago and is now in use throughout 33 states (in over 15,000 installations). This one-piece steel-reinforced, precast concrete cattle guard is built to withstand constant use by farm machinery and heavy trucks. Our design features round topped rails and built-in footing for extra depth, requires no additional construction, and can be installed in two hours or less. The SMITH CATTLEGUARD is available in 12', 14', and 16' lengths immediately from our plant in Bethel along with Centerline and Fenceline Feedbunks, 200-gallon Stock Tanks, and the popular 100-gallon Freeze-Proof Waterer. All our products are backed by our guarantee of customer satisfaction.

### All Farm Products:

- Steel-Reinforced Precast Concrete •
- Highest Quality — Lowest Prices • • Experienced Personnel •
- Set In Place On Your Farm (Additional Delivery Charge) •

 Licensed by EASI-SET® Industries

Please send me information on:

- cattle guards     waterers     feed bunks

name \_\_\_\_\_

address \_\_\_\_\_

city \_\_\_\_\_ state \_\_\_\_\_

phone \_\_\_\_\_ zip \_\_\_\_\_

## CONCRETE SAFETY SYSTEMS,™

Route 1095

(717) 933-4107

Bethel, Pa. 19507