

s foliar fertilizer not a futuristic idea

liar fertilizers should y on crops that are ving, there are a few here they may be rrect damage caused ns.

compaction or her- r, for example, can it's metabolism and ent use and transport ns. Foliar fertilizers,

eld of corn

that's no ld potential."

, have been known to plant recovery by hem with needed and getting their ack on track so they oil nutrients. In this sprays prevent yield sing the crop through od. They could even ds in spite of the ress.

ar plants are under less yield they ohnson says. "The ust be corrected foliar fertilizers are ly practical tool for

ilizers also can be to correct temporary f nutrients tied up in trick is to identify the rient deficiency— by visual appearance - and use the correct to fill the gap and plant's ability to locked nutrients. o sense in applying a treatment when what

you really need is one of the minor elements," Johnson says. "That's one of the biggest mistakes a

substantially if the foliar fertilizer is piggybacked with a needed insecticide or fungicide, thus

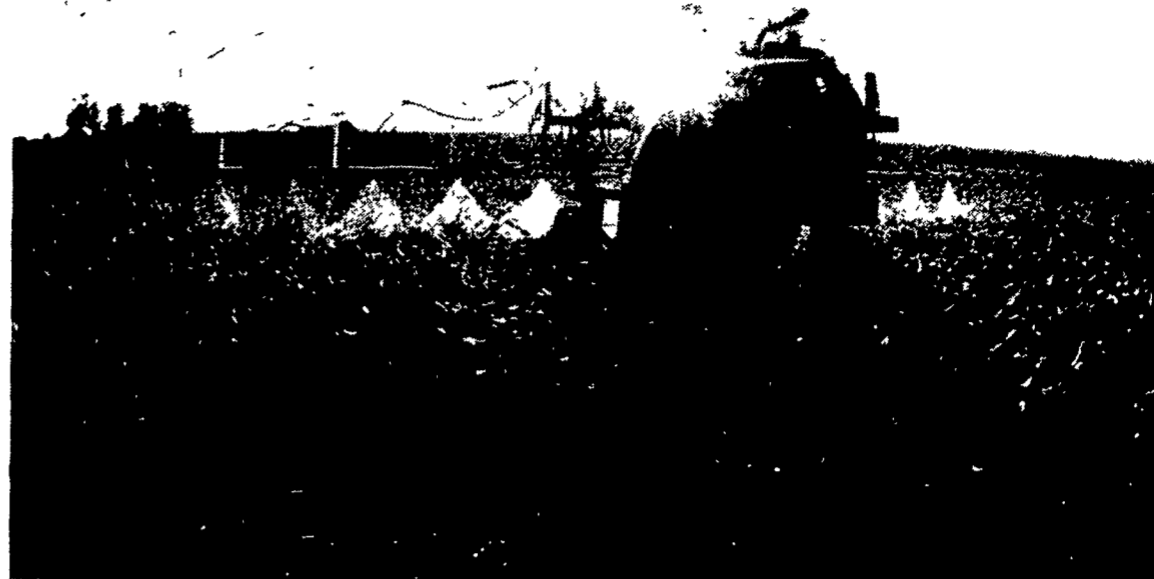
"Foliar feeding has a long way to go before its performance can be guaranteed, but we're beginning to see the light at the end of the tunnel."

farmer can make with foliar feeding. It's also one reason why some farmers have had disappointing results."

Foliar fertilizers can be applied by air or with a high-clearance sprayer. While aerial application may cost slightly more than using a ground sprayer, the added expense is usually worthwhile because no plants will be trampled, Johnson says. Either way, application costs can be fertilizer

saving a trip over the field.

"Foliar feeding has a long way to go before its performance can be guaranteed," Johnson concludes, "but we're beginning to see the light at the end of the tunnel. Like anything else that's new, foliar feeding needs to mature. We're working to fine tune the science. Once we do, foliar fertilization should become a vital part of corn and soybean fertilization."



Progressive farmers continue to experiment often treating more acreage each year as with foliar fertilizers on corn and soybeans -- results become more consistent.

AEB declares 2-month moratorium on assessments

PARK RIDGE, Ill. — The American Egg Board voted to declare a moratorium on collection of AEB assessments for the months of June and July in order to provide some financial relief to producers during the industry's severe economic conditions. The action was taken during an emergency telephone conference call of the Board on Friday, May 22.

"We recognize the problem is far greater than can be solved by this reduction in AEB collections. But right now every little bit helps and we want to do what we can for the producer," said Herbert L.

Steinbrueck, AEB chairman.

Even with the reduced income, AEB will maintain a strong advertising and promotion program, according to Steinbrueck.

"We will continue our full television and radio advertising campaign for the balance of the year, as well as the important cholesterol research program. We will have to tighten our belts in some of the less essential activities to do it, but we believe this moratorium is responsive to the producers' needs at this time," he said.

The members of the Board also unanimously passed a motion

pledging their full financial support to AEB when the moratorium ends in August and encouraging the entire industry to provide strong financial support for AEB at that time also.

June AEB collections are due during the middle of July. All producers and handlers will receive communications from AEB informing them of the moratorium. Handlers will also receive their usual handler forms along with an explanation that AEB still needs the forms filled out and returned in order to continue to collect statistical data that are important to the industry.


"All of our independent market research shows the AEB program works in improving consumer attitudes and demand for eggs. The industry must view AEB advertising and promotion as a long-term effort that will have long-range benefits.

"It is essential that we keep the AEB program strong. But we must


also recognize there are periods of time when the industry needs help in other ways, and AEB must be flexible enough to respond to the industry," Steinbrueck said.

In a cost cutting move, the Board also voted to combine its previously scheduled July and October Board Meetings into a single meeting to be held August 26-27 at Chicago.







BEFORE YOU BUY!



GRAIN DRYER BINS



IDEAL FOR GRAIN OR MACHINERY STORAGE



ASK YOUR AGRI BUILDER ABOUT ASCS FINANCING

BUTLER WARRANTY

SEE YOUR AGRI-BUILDER FOR DETAILS!

LEASE IT

See Your Agri Builder For Details

* All Building F.O.B. Anville, Pa.
 * (Buildings not equipped as shown)
 * Prices Based on Survey of Agri-Builders
 * Prices Could Vary With Each Agri-Builder
 Various Sizes Height and Weight Available

These Buildings Engineered for Self-Erection
 (Butler will furnish Erection and Foundation Drawings)

IN STOCK FOR IMMEDIATE DELIVERY

1818 GRAIN BIN - 4173 Bushel Capacity

LESS THAN \$2200⁰⁰
F.O.B. Cash and Carry


IN STOCK FOR IMMEDIATE DELIVERY

2718 GRAIN BIN - 9872 Bushel Capacity

LESS THAN \$4000⁰⁰
F.O.B. Cash and Carry

IN STOCK FOR IMMEDIATE DELIVERY

P. E. HESS, BUTLER MFG. CO.
Box 337, Oxford, PA 19363



I'm interested in more information on Butler products.

Buildings Bins Dryers Bulk-O-Matics

Name _____

Address _____

County _____ Zip _____

City _____ State _____

Phone _____

(Include area code) LF

POGO INC.
1841 Jerry's Road
Street, Md. 21154
PH: 301-692-5350

FOUR COUNTIES CONTRACTOR
R.D., Box 249
Coalport, Pa. 16627
PH: 814-672-5751

HASCHEN AGRICULTURAL SYSTEMS
P.O. Box 505
Chestertown, Md. 21620
PH: 301-778-5800

TRI-COUNTY AGRI-SYSTEMS
R.D.#1, Box 55
Swedesboro, NJ 08085
PH: 609-467-3174

WEETER CONCRETE CONSTRUCTION
P.O. Drawer V
Knox, PA 16232
PH: 814-797-5122

RIGGS ENTERPRISES
Box 98
Boswell, PA 15531
PH: 814-629-5621

O. A. NEWTON & SON CO.
Bridgeville, Delaware 19933
PH: 302-337-8211

NEALIN STEEL BUILDERS
301 N. Broad Street
Grove City, Pa. 16127
PH: 412-458-7243

TRI-STATE MARINE DIST. INC.
Route 256
Deale, Md. 20751
PH: 301-867-1447

WALTER J. CONSTRUCTION
RD1 Box 403J
Strasburg, Pa. 17579
PH: 717-687-8681

KELLER BUILDING SYSTEMS INC.
R.D. 1 Box 203
Lewisburg, PA 17837
PH: 717-524-0568

QUILL CONSTRUCTION CO.
P.O. Box 6269
Harrisburg, Pa. 17112
PH: 717-545-7527