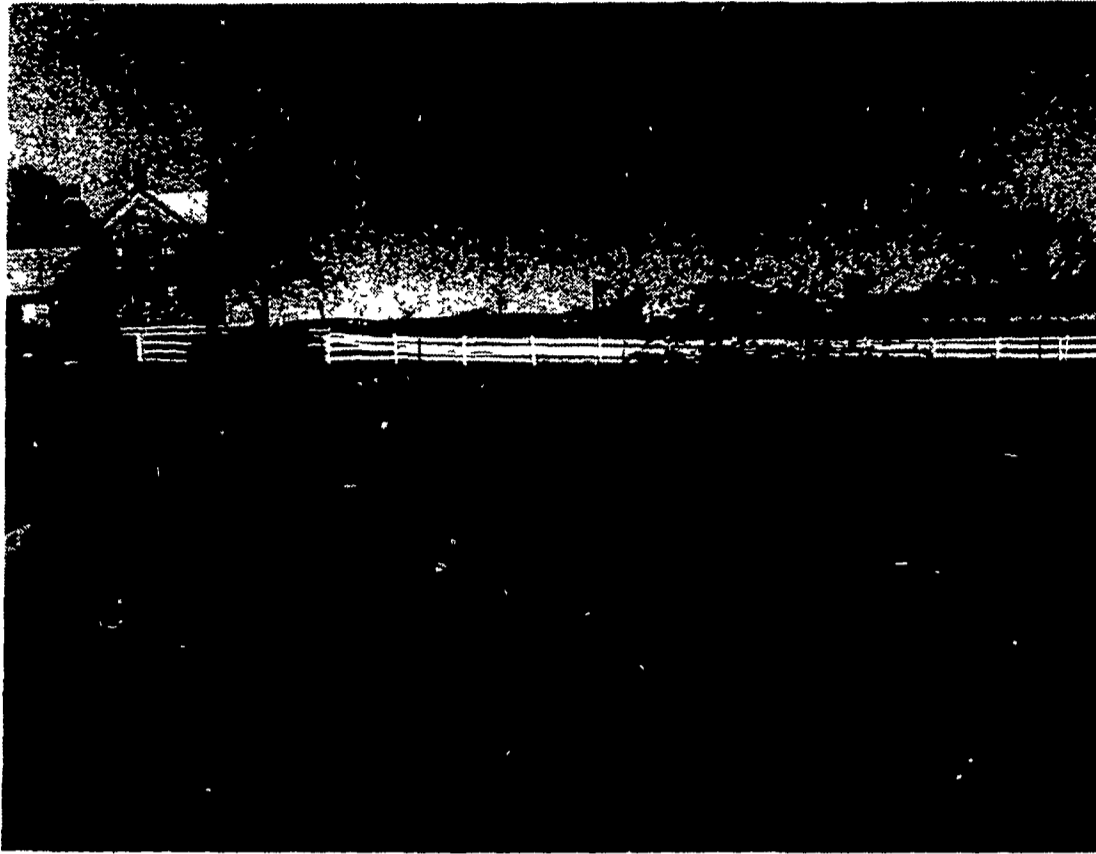


# PUT SOME PLEASURE BACK INTO MANURE HANDLING WITH THESE THREE TOUGH-BUILT MACHINES FROM US FARM



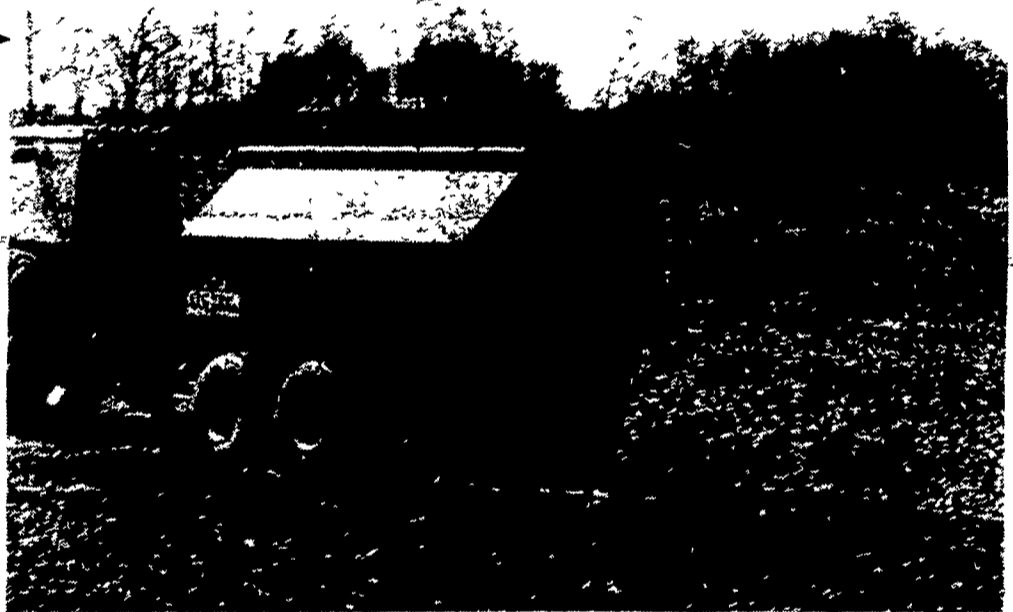
## ← BULL-STRONG MANURE PUMP

You may never see another manure pump with so much brute strength built into it. A 24" propellor provides agitation that farmers are now saying stirs up the slurry in two hours instead of twelve.

A self-cleaning knife on the propellor chops solids in the pit. A 6" fill pipe from a 20" impellor lets you load the tanker in a hurry. Available in models from lagoon, trailer, 3 pt. hitch or stationary applications.

## SIMPLICITY TANKER WITH FEW MOVING PARTS →

With so few moving parts, you know immediately this tanker will be easy to maintain. A fan on the bottom front of the unit, draws in the liquid slurry by gravity and blows the manure up over the tank through a rugged pipe. As the liquid manure is discharged out the back, a special baffle deflects the slurry into a nice spreading pattern onto the fields. Available in a capacity size to fit your farm.



## ← TOUGH-BUILT RED BEDDING CHOPPER

This practical machine fluffs bales of straw, corn fodder and old hay into liquid absorbent bedding that leaves no more long stems to clog your liquid manure system. Designed for the modern dairy farm, you have three models to choose — electric, gasoline or battery powered motors.

So put some pleasure back into your manure handling with these three tough-built machines from

**US Farm Systems of Pennsylvania**

Fill in this coupon and mail it to:



4020 Blue Ball Road,  
Nottingham, PA 19362  
Or Phone:  
(301) 398-2948

Please send me information on  
 Tough-built, red bedding chopper  
 Bull-strong manure pumps  
 Simplicity tanker with few moving parts

NAME \_\_\_\_\_

ADDRESS \_\_\_\_\_

TOWN \_\_\_\_\_ STATE \_\_\_\_\_ ZIP \_\_\_\_\_

Phone (\_\_\_\_\_) \_\_\_\_\_

I farm \_\_\_\_\_ acres and have

\_\_\_\_ Hogs \_\_\_\_ Cows \_\_\_\_ Steers \_\_\_\_ Chickens