

Poultry Markets

Weekly New York Egg Market

	From Friday, May 15 to May 22				
	Fri.	Mon.	Tues.	Wed.	Thurs.
WHITE					
Jumbo	72	73	74	74	76
Ex Large	69	70	71	71	73
Large	66	67	68	68	70
Mediums	59	59	59	59	60
Pullets	48	48	48	48	49
BROWN					
Jumbo	95	95	96	96	96
Ex Large	82	82	83	83	85
Large	78	78	79	79	81
Mediums	Unquoted				
Pullets	Unquoted				
Peewees	Unquoted				
Off Grade					
Large	59	60	61	61	63
Checks	34	34	35	36	37

Tone: Large barely steady. Balance medium easy.
Copyright 1981 by Urner-Barry

N. E. Weekly Shell Egg Report

Tuesday, May 19

Report supplied by USDA

Prices paid per dozen Grade "A" Brown eggs in cartons delivered to retail stores:

	Ex. Large	Large	Medium	Small
MASS. +	85-90	81-86	66-72	48-55
Mostly	87-88	83-84	68-70	50-53
N. HAMP.	80-87	76-83	61-68	43-50
Mostly	82-85	78-81	63-66	45-48
R.I.	88-89	84-85	70-71	52-53
VERMONT	87-95	83-91	66-77	-
Mostly	89	85	68-73	-
MAINE	86-87	82-83	68-69	50-51

+ Includes Central and Western Sections only.

Baltimore Eggs

Wednesday, May 20

Report supplied by USDA

Prices trended higher on large. Demand fair. Supply adequate.

Cartoned eggs: Prices to retailers, state graded (min. one case sale) white.

Large	69-73
Medium	62-64

Delmarva Poultry

Wednesday, May 20

Report supplied by USDA

RTC movement fair to occasionally good where features involved on whole birds, parts generally less aggressive. Slaughter schedules reduced slightly overall. Today's L.T.L. asking prices on U.S. Grade A at 52-54. Advance interest slow in developing in most quarters as traders await further market developments. Live supplies ample at weights tending heavier than desired in instances. Undertone unsettled.

Estimated slaughter of broiler fryers in Delmarva (000).

Estimated 5/20 1590; Actual 5/13 1786; Actual 5/18 1671; Average Weights 5/18 4.25; 5/11 4.28.

Nest Run Eggs

Prices are from Egg Clearinghouse, Inc., (ECI) Durham, N.H. and reflect trading prices for gradable nest run eggs (GNR) on ECI, a nationwide trading center for producers, packers and marketers. GNR eggs are classified by weight in 30-dozen cases, and traded in lots of either 300 or 750 cases. Prices are FOB buyers dock, and are computed Tuesday and Thursday of each week. This week's prices for each classification were:

Classification	Net Weight	May 19 Tuesday	May 21 Thursday
Class 1 - Large	48 lbs.	55	55
Class 2 - Large	45 lbs.	52	52
Class 3 - Medium	42 lbs.	45	45
Class 4 - Small	39 lbs.	36	37
Breaking Stock	48 lbs.	42	44
Checks	48 lbs.	37	39

Philadelphia Eggs

Wednesday, May 20

Report supplied by USDA

Prices again unchanged to higher on larger sizes while unchanged on mediums cartoning demand fair. Offerings fully adequate overall. Undertone steady.

Prices to retailers: Sales to volume buyers, consumer grades white eggs in cartons, delivered; store door.

A Extra Large 65½-71; A Large 64½-69; A Medium 57-59.

Eastern Pa. & N.J. Poultry

Wednesday, May 20

Report supplied by USDA

Prices light type hens steady. Offerings lighter for a fair processor interest. Occasional report of medium weight hens delivered plant at 11 cents noted. Offerings of heavy type ample for a light call.

Prices paid at Farm.

Lightweight at farm: 5-7, mostly 6-6½.

FOB plant: 9-9½, mostly 9.

Heavyweight: TFEWR.

Fogelsville Poultry

Fogelsville, Pa.
Tuesday, May 5

Report supplied by USDA

(Prices paid dock weights, cents per pound, except where noted)

HENS, LIGHT TYPE: range 10.

HENS, HEAVY TYPE: range 5-28, mostly 25.

PULLETS: range 51.

ROASTERS: range 51.

FRYERS: range 38.

DUCKS: range 100.

DRAKES: range 100.

RABBITS: range 80-125, mostly 95.

GUINEAS: range 149-210, mostly 149-150.

PIGEONS (PER PAIR): range 100-600.

TOTAL COOPS SOLD: 250.

Heinsey's Poultry Market

Root's, East Petersburg

Tuesday, May 19

Report supplied by auction

MUSCOVY DUCKS, DRAKES: range 1.24-1.42.

MUSCOVY DUCKS, HENS: range 1.18-1.30.

PULLETS: 6-9 lbs. range .40-.44.

RED FOWL: 4-5 lbs. range .26-.38.

RED FOWL: 6-7 lbs. range .36-.42.

CROSSBRED FOWL: 6-9 lbs. range .30-.38.

CROSSBRED ROOSTERS: 4-6 lbs. range .60-.92.

CROSSBRED ROOSTERS: 7-11 lbs. range .18-.42.

GUINEAS: range 1.65-1.84.

GEESE: 9-12 lbs. range .60-.74.

TURKEYS: 18-31 lbs. range .32-.50.

PIGEONS: range .85-1.10 ea.

WHITE PIGEONS: range 2.85-3.25 ea.

RABBITS: 4-6 lbs. range .90-1.20.

RABBITS: 7-10 lbs. range .80-1.04.

PEKING DUCKS: range .90-1.06 ea.

BANTY ROOSTERS: range 2.75-4.25 ea.

BANTY HENS: range 1.00-1.60 ea.

GUINEA PIGS: range .75-2.85 ea.

GOATS: range 35.00-68.00.

KID GOATS: range 29.00-40.00.

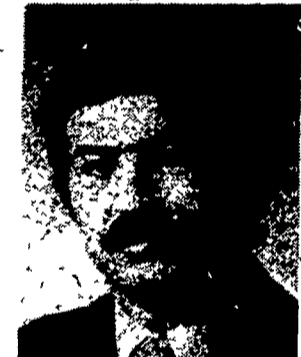
TOTAL COOPS SOLD: 615.



The incredible cubic egg™
American Egg Board

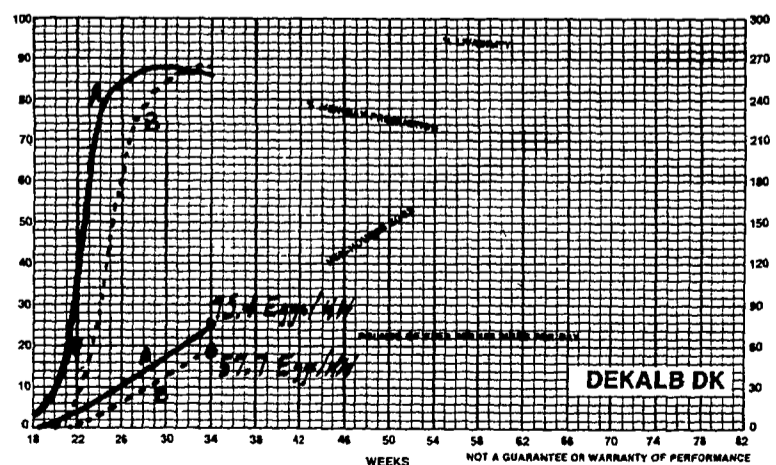
WHAT VALUE DOES EARLY PRODUCTION HAVE?

By 34 weeks of age this graph shows the early maturing flock ahead by nearly 18 eggs per hen housed! The value to you is at least 25-30¢ more per hen for the year!



The DEKALB DK is designed to give you early production with excellent egg sizing on very efficient feed consumption.

In 1981 Moyer's enters their 35th year of supplying area poultrymen with quality chicks. Lancaster County Poultrymen can now call on Leon Moyer, one of the Moyer family, for information or with questions about their present or future poultry flock needs. Leon suggests the DEKALB DK just could be the profitable alternative you've been looking for.



Moyer's CHICKS, INC.

DEKALB Quakertown, PA 18951
BROWN & WHITE (215) 536-3155
EGG LAYERS

HUBBARD
WHITE MT.
BROILERS

Lancaster Farming

Copyright 1980 by Lancaster Farming
P.O. Box 366 - Lititz, PA 17543
Office: 22 E. Main St., Lititz, PA 17543
Record-Express Office Building
Phone: Lancaster 717-394-3047
or Lititz 717-626-1164

Robert G. Campbell, Publisher
Sheila M. Miller, Editor
Dick Anglestein, Staff Writer
Debra L. Koontz, Staff Writer

CORRESPONDENTS

M. H. Gitt, Adams County
Biglerville, 717-677-9440
Laurel Shaeffer, Berks County
Bernville

Jane Bresee, Bradford County
Ulster 717-358-3346

Sally B. Bair, Lancaster County
Columbia 717-285-4926

Susan Kauffman, Lancaster County
Peach Bottom 717-548-3131

Vivian Paul, Northampton County
Bath 215-837-1363

Joyce Bupp, York County
Seven Valleys

Subscription Price
\$7.50 per year; \$13.00 - 2 years
\$12.00 per year outside of
PA, NJ, MD, DE, NY, VA & WV

Established November 4, 1955
Published every Saturday
by Lancaster Farming, Lititz, PA
Second Class Postage paid at
Lititz, PA 17543 USPS 304 040

For address change form or new
subscription see Classified Section
Members of Newspaper Farm Editors Assn.,
Pa. Newspaper Publishers Association,
and National Newspaper Association.



TOP OF THE HOG MARKET

DANVILLE LIVESTOCK MARKET
OLD ROUTE 11, DANVILLE, PA 17821
717-275-2880

HORSE SALE HELD 3rd SATURDAY OF THE MONTH

Market your cattle & hogs
the auction way.
Sale every Monday 2 P.M.
Melvin M. Lehman (Owner)