



# York County DHIA Monthly Report

April 1981

The high herd was Wayne E Myers, 3870 S Salem Church Rd., Dover, PA 17315 with 41 Holstein cows producing 66.0 lbs milk and 2.48 lbs B.F. Second high was Thomas Boyer, 110 Biesecker Rd., York, PA 17404 with 34 Holstein cows producing 62.9 lbs milk and 2.35 lbs B.F.

The high cow was Lorna a 6 year old Holstein from Fawn Valley Farm, R1 New Park, PA 17352 who produced in 305 days 20,154 lbs. milk and 837 lbs B.F. Second high was 463 a 3 year old Holstein owned by McRai Dairy Farms, R1 East Berlin, PA 17316 who produced in 305 days 18,392 lbs milk and 809 lbs B.F.

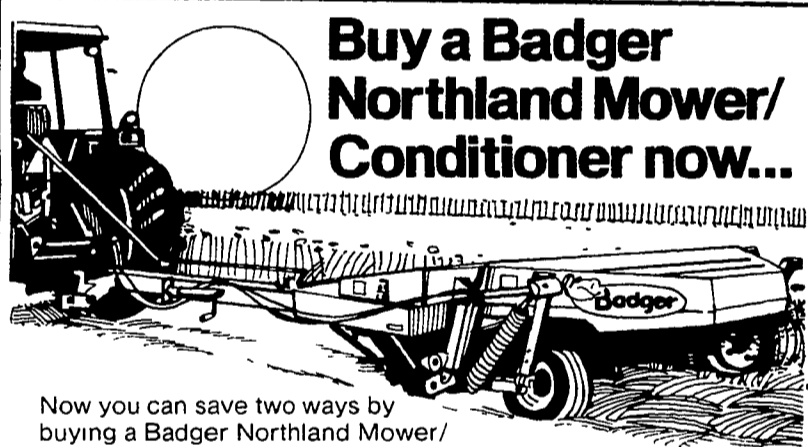
OWNER NAME OR NUMBER	BREED	AGE	DAYS IN MILK	LBS. MILK	% FAT	LBS. FAT
Wayne E Myers	3	41.4	98.3	66.0	3.8	2.48
Thomas A Boyer	3	34.3	94.3	62.9	3.7	2.35
Paul R King	3	44.0	88.2	58.0	4.0	2.33
Paul R King	3	46.4	87.6	57.1	4.0	2.31
Smysers Richlawn Fm	3	71.7	90.7	58.7	3.9	2.28
Avalong Farms Inc.	3	25.6	89.6	58.5	3.8	2.24
Sinking Spring Fm	3	66.7	96.2	53.4	3.8	2.20
The JE Baker Co	B3	41.6	92.6	56.5	3.8	2.14
Leonard W Greek	3	25.0	95.9	54.1	3.9	2.09
T Edwin Johnson	3	49.6	88.1	49.5	4.2	2.08
Wayne B Mummert	B3	70.2	88.9	52.1	4.0	2.07
Dennis J. Myers	3	53.0	99.1	51.5	3.9	2.00
HE Fetrow & Sons	3	76.3	89.1	51.2	3.9	1.98
Melvin R. Lehr	B3	46.7	84.2	49.7	4.0	1.97
Daryl L. Bair	B3	40.5	94.4	57.0	3.5	1.97
William Ruppert	B3	53.8	93.6	52.9	3.7	1.95
Hidden Springs Fm	B3	77.3	92.8	48.3	4.0	1.93
C Robert Kilgore	B3	41.9	92.1	51.6	3.7	1.93
Leonard W Greek	3	25.0	88.9	50.3	3.8	1.93
Lynn Wolf	3	49.0	87.0	49.5	3.9	1.91
Earl Fuhrman	3	76.0	90.3	46.6	4.1	1.90
Beshore Farms	3	43.4	81.6	50.5	3.7	1.87
Leader Farms	2	77.1	85.6	37.1	5.0	1.87
Fred Sprengle	3	36.0	92.5	51.6	3.6	1.86

Rick L Cook	B3	51.0	89.3	49.4	3.7	1.85
Adrian Rinehart	B3	91.3	96.2	46.6	3.9	1.83
Leland Stanford	B3	34.1	96.6	49.2	3.7	1.82
Mervin W Hertzler	2	65.0	93.4	37.0	4.9	1.81
Leroy Bupp	3	87.0	93.7	52.3	3.4	1.80
Perrydell Farms	3	176.2	88.0	47.2	3.8	1.80
William S Buser	3	82.4	96.0	46.8	3.8	1.79
Kenneth Rexroth	B3	102.6	86.9	47.9	3.7	1.78
Geo. Knight	3	116.6	88.3	45.5	3.9	1.76
Walkers Farm	B3	77.0	90.1	46.7	3.8	1.76
Albert Dehoff	B3	126.9	95.3	45.8	3.8	1.75
Smokey Hollow Fm	B3	35.2	84.3	44.9	3.9	1.75
McRai Dairy Farm	B3	124.4	90.8	47.8	3.7	1.75
Vincent C Webb	B3	101.1	87.4	44.8	3.9	1.74
P McWilliams Jr	B3	41.0	92.4	46.3	3.7	1.73
Fz yn Meadow Hols	B3	68.8	94.1	49.7	3.5	1.73
Phillip Laughman	3	24.2	82.0	43.0	4.0	1.72
J & M Hushon	B3	97.3	89.9	44.5	3.8	1.71
R & M Stewart	3	44.2	83.9	44.0	3.9	1.70
Bupplynn Farms 2	B3	62.8	89.5	44.4	3.8	1.70
Elvin G. Molison	B3	120.3	81.5	45.6	3.7	1.70
R Baumgardner Jr	B3	54.0	92.6	46.2	3.7	1.70
Honeycrest Fm	B2	95.0	88.8	38.1	4.4	1.68
Gum Tree Farm	3	41.1	93.8	45.0	3.7	1.67
Elvin R. Deiter	B3	64.5	91.5	46.2	3.6	1.67
Edwin L. Calhoun	B3	43.9	88.0	42.5	3.9	1.66
Big T Holsteins	B3	80.1	92.7	44.5	3.7	1.64
John H. Doll Jr	B3	33.8	85.6	45.5	3.6	1.63
D & D. Doll	B3	74.9	92.9	46.8	3.5	1.62
Horace E Heindel	B3	125.8	84.6	46.0	3.5	1.62
Eugene B Taylor	B3	50.3	91.0	44.5	3.6	1.62
David V Thompson	B3	94.4	87.2	40.9	3.9	1.60
Stump Acres	B3	102.0	90.0	42.7	3.7	1.60
Avalong Farms Inc	2	43.5	81.4	34.0	4.6	1.58
Eugene M. Kilgore	B8	50.8	87.2	43.3	3.6	1.57
Philip Stambaugh	3	52.2	91.0	42.3	3.7	1.57
Little Creek Fms	G3	230.3	92.6	42.4	3.7	1.57
Ronald Stein	B3	46.7	92.0	43.0	3.7	1.57
Robert W. Mays	B3	60.7	88.5	43.9	3.6	1.56
Walnut Hill Farm	B3	48.1	82.3	40.7	3.8	1.55

William H. Fantom	B3	52.0	88.4	41.5	3.7	1.54
Harold Brown	3	60.2	89.6	42.6	3.6	1.54
Jacob Brubaker	B3	49.4	88.2	42.5	3.6	1.54
Ellis Crowl	B3	101.3	86.2	45.9	3.3	1.53
Double D Farm	B3	94.3	85.2	37.3	4.1	1.53
Eisenhart Bros.	G3	65.1	86.9	39.4	3.9	1.52
Richard E. Stough	B3	36.3	82.2	38.8	3.9	1.51
D. & C Druck	B3	69.9	79.2	41.7	3.6	1.51
David Gemmill	B3	49.4	92.3	37.0	4.1	1.51
Fawn Valley Farm	B3	62.8	93.6	40.1	3.7	1.50
Furnace Creek Farm	3	115.9	87.6	40.7	3.7	1.50
Fantom & Gordon	B8	58.9	88.5	37.6	4.0	1.50
Dale Barshinger	B3	37.7	82.0	38.5	3.8	1.48
Donald Lanus	B2	82.7	90.8	30.9	4.8	1.47
John D. Adams	B3	70.6	83.1	36.4	4.0	1.47
Donald Wilson	B3	43.3	90.5	38.7	3.8	1.46
Dennis McWilliams	B3	63.1	89.0	43.3	3.3	1.44
Gary W Thoman	3	43.8	85.5	39.1	3.7	1.44
C Herr & Son	B3	52.9	90.7	37.7	3.8	1.43
Double D Farm	B3	93.2	76.3	37.1	3.9	1.43
Carl Anderson	B3	43.0	82.0	36.0	3.9	1.42
Wayne L. Sweitzer	B3	52.5	78.4	39.0	3.6	1.42
Dale Clymer	B3	68.1	85.3	36.3	3.9	1.42
Elwood T Krick	B3	78.0	87.0	36.2	3.9	1.41
Charles Hess	B3	100.8	84.4	39.1	3.6	1.41
R & M Farms	B3	38.6	89.2	34.6	4.0	1.38
Albert Neufeld	B3	117.1	80.2	36.4	3.8	1.38
Desota & Burchett	G3	106.7	86.4	35.6	3.8	1.37
David M Emig	G3	52.6	94.4	48.7	4.2	2.03
Jordon Bros.	B3	70.9	84.9	43.3	4.2	1.82
Donald Eyster	B3	28.8	93.4	43.6	4.0	1.73
Benjamin Beiler	B3	32.0	80.7	43.6	3.9	1.69
Gary Altland	G3	38.3	85.4	33.2	4.6	1.54
Doll Zirkle	B3	32.9	82.1	40.9	3.5	1.43

OWNER	BREED	NO. COWS	% DAYS IN MILK	LBS. MILK	% FAT	LBS. FAT
Geo Knight	3	9-0	305	18,195	2.9	528
Lock	3	5-3	305	19,125	4.1	788
Donna						

(Turn to Page D19)



## Buy a Badger Northland Mower/Conditioner now...

Now you can save two ways by buying a Badger Northland Mower/Conditioner. You heard right. Save all your valuable forage crop and save money too!

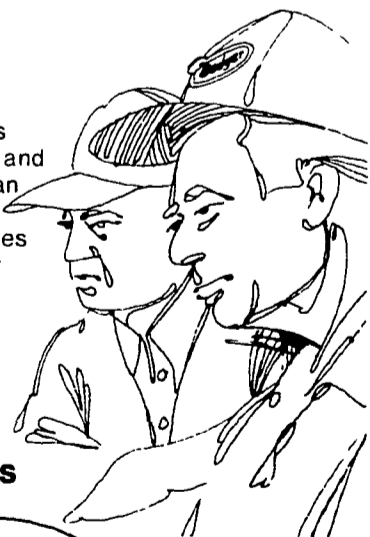
and save!

Badger builds the best mower/conditioner you can buy. It's a close clean cutting unit that gets the job done without the over-conditioning that other models produce.

And now Badger makes it easier than ever to have a new Mower/Conditioner working for you this season! That's right with Badger's special in-season waiver program and a super 15.5% finance rate, you can get a new mower/conditioner now and not worry about finance charges until September 1, 1981. No other company offers a deal this good!

So see your Badger Dealer now. Talk to the man who knows how you can have the finest forage crop ever, thanks to a new Badger Mower/Conditioner.

Talk to the man who knows



BN 24



**GRUMELLI'S FARM SERVICE**  
Mechanics Grove  
Quarryville, PA 17566  
Ph. (717) 786-7318

**CECIL DAIRY SERVICE**  
RD 1 Rt 274  
1/2 Mi. South Rising  
Sun, MD 21911  
Ph. (301) 658-6923

**ROY O. CHRISTMAN**  
RD 1  
Hamburg, PA 19526  
Ph. (215) 562-7218

**PIKEVILLE EQUIPMENT INC.**  
RD 2  
Oley, PA 19547  
Ph. (215) 987-6277

**SHOW-EASE STALL CO.**  
523 Willow Rd.  
Lancaster, PA 17601  
Ph. (717) 299-2536

**LLOYD E. KREIDER**  
RD 1  
Cochranville, PA 19330  
Ph. (215) 932-4700

Sealcrete can paint your farm buildings quickly and inexpensively...

Call for Free estimate



HYDRAULIC AERIAL EQUIPMENT



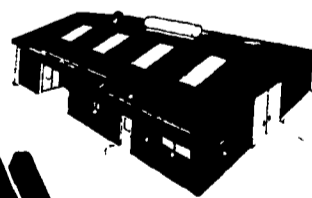
Contact Amos Gehman, Salesman

**Seal Crete, Inc.**  
RD2, Ephrata, PA  
717-859-1127

## VERNON MYERS, INC.



STEEL BUILDINGS & GRAIN STORAGE



274 Old Mt. Gretna Rd.  
Lebanon, Pa. 17042  
Phone: (717) 867-4139



FINANCING & LEASING PROGRAMS AVAILABLE

COMMERCIAL, INDUSTRIAL, AND AG BUILDINGS — WE OFFER COMPLETE ERECTION FREE ESTIMATES - NO OBLIGATION

### INVENTORY REDUCTION ON NEW EQUIPMENT

	List*	Sale*
55'x8" Transport Auger (set-up)	\$2,770	\$1,800
Redex RX-20 Continuous Flow Dryer	25,685	18,000
Danuser Posthole Digger w/#412 Auger	1,045	725
Clay 3500 BPH Cleaner w/Platform, Bypass, Screens	4,160	3,300
7980 Bu. Grain Bin	4,990	3,300
5990 Bu. Grain Bin	4,045	2,860
1742 Bu. Hopper Bin	3,560	2,300

\* FOB LEBANON, PA