

## Now Is The Time

(Continued from Page A10)

Spray materials such as Sevin, Imidan and Orthene will kill the worms that are present. Repeated sprays will be necessary in order to give any length to the protection. Woodlot owners may want to secure commercial sprayers that can make aerial application.

Gypsy Moth eradication is very difficult, however, some protection to private shade trees is possible with repeat applications.

### Haylage and Hay Making

Good quality forages can help farmers generate more cash income with little to no additional expense, according to Glenn Shirk, Lancaster County Extension Dairy Agent. And, what farmer couldn't use that right now! Cows produce more milk and livestock gain more rapidly on higher quality forages. The need for purchased concentrates is also generally reduced. So if you are growing forages, concentrate on improving forage quality and improving nutrient yield per acre. Now is the time to start doing this.

Most important to quality is stage of maturity at time of harvest. For established stands of alfalfa, harvest the first cutting at the late bud stage; aftermath growth can be cut in the late bud to early bloom stage - about 35 to 42 days after the previous cutting and when the basal buds begin making new growth. To enhance the vigor and longevity of the stand, at least one of the cuttings should be allowed to bloom. Similarly, the first cutting of a new seeding of alfalfa should be made in the early

bloom stage. Early harvesting increases your possibility for making two cuttings prior to the arrival of summer droughts and potato leafhoppers. It can also permit you to make one additional cutting per year.

Grasses should be cut in the boot stage of maturity, just as the heads are beginning to emerge.

### Control Weeds in New Alfalfa

Good weed control in alfalfa is essential for minimizing competition for light, moisture, and plant nutrients. The best times to control weeds in alfalfa stands is at time of establishment, and in the crop preceding alfalfa. Now is a good time to observe new seedings closely. Many of the small weeds you see emerging can be controlled with a post-emergence application of 2,4-DB of dinoseb (Premerge 3), when the weeds are quite small.

Weeds should be less than an inch tall when 2,4-DB is applied. It will not kill grasses, but is effective against most broadleaf weeds except wild radish. It is weak on smartweed. On the other hand, dinoseb will control wild radish as well as most other broadleaf weeds, but it will not control grasses and late germinating weeds. Dinoseb is applied after the alfalfa has two trifoliate leaves, when the weeds are very small, and when air temperatures are between 65°F and 85°F.

These weed killers may not be needed even if you used a preplant-incorporated material. Be sure to read the label carefully and follow instructions.

## Livestock market and auction news

### Shenandoah Valley Livestock

Harrisonburg, Va.  
Saturday, May 16

Report supplied by auction STOCKER, FEEDER, AND SLAUGHTER CATTLE: Good Light Steer Calves 71.00-77.00; Medium 66.00-70.75; Plain 65.00 and down; Good Heavy Steers 64.00-69.00; Medium 59.00-63.75; Plain 58.00 and down; Holstein Steers 43.50-53.50; Good Slaughter Steers 61.25 and down; Good Light Heifer Calves 56.00-61.50; Medium 51.00-55.75; Plain 50.00 and down; Good Heavy Heifers 49.00-54.00;

Medium 44.00-48.75; Plain 43.00 and down; Slaughter Cows 43.00-49.50; Utilities 37.00-42.75; Canners & Cutters 36.75 and down; Milk & Stock Cows 595.00 and down; Stock Bulls 40.50-70.00; Slaughter Bulls 57.00 and down.

CALVES: Veal Calves 94.00 and down; Baby Calves 110.00 and down.

SHEEP & LAMBS: Choice Blue O 72.00; Good Red O 66.10; Slaughter Ewes 15.00-19.75.

HOGS: Top 42.00; Heavy 35.00-41.10; Medium 39.00; Sows 30.00-41.00; Boars 43.50.

### Hunter's Auction

Monday, May 18  
Rising Sun, Md.

Report supplied by auction HEIFERS: Good to Choice 48.00-52.00.

FEEDER STEERS: Good to Choice 70.00-81.00; Standard to Good 61.00-68.00.

COWS: High Choice to Prime 46.50-48.25; Good to Standard 45.00-47.75; Utility 43.25-45.00; Cutters 42.50-43.00; Canners 39.75-42.00.

CALVES: Prime 180-240 lbs. 92.00-110.00; High to Choice 140-180 lbs. 89.00-98.00; Good to Choice 120-140 lbs. 85.00-92.00; Standard to Good 90-115 lbs. 85.00-96.00; Utility 75-85 lbs. 68.00-74.00; Low Utility 65-75 lbs. 55.00-64.00.

FEEDER PIGS: 20-30 lbs. \$22 to \$31 by hd.; 40-50 lbs. \$28 to \$36 by hd.

HOGS: 130-240 lbs. 39.50-42.50.

SOWS: 30.00-34.50.

BOARS: 28.00-32.00.

LAMBS: 15-25 lbs. 100.00-137.50.

GOATS: Billies \$30 to \$47 by hd.; Nannies \$35 to \$52 by hd.; Kids \$18 to \$34 by hd.

## Farm Calendar

Today, May 23

Pa. Chucken Cooking Contest, N. Lebanon Area High School, Fredericksburg

Lancaster Forest Fire Crew Highville Country Fair, starts 10 a.m. at Fort Holbrook Fire Base

1981 Md. Pork Cookout Contest and Sugarloaf Springs Crafts Festival, Md. State Fairgrounds, Timonium, Md., 1:30

Tuesday, May 26

Ephrata Garden Spot Young Farmers dinner meeting, 6:45 p.m., Groff Store, Railroad Ave., New Holland  
Thomasville 4-H meeting, 7:30, York County 4-H Center

Wednesday, May 27

Selinsgrove Young Farmers, Rt. 104 and 35 crossroads, 10 a.m., Benner/Boyer farm

Northeast Dairy Co-op Federation Inc., Rissers Restaurant, Stouchsburg, 8 p.m.

Friday, May 29

Dairy Promotion, 10 a.m.-1 p.m., Penn Harris Motor Inn, Camp Hill

Saturday, May 30

Bainbridge Mayfest, 4-9 p.m., at Nissley Vineyards, Rt. 441 near Bainbridge

Strawberry Festival and Farm Tour, Blevins Fruit Farm, Stewartstown, 9-5, rain date June, (I-83, Shrewsbury Ex. 1, Easton Rt. 851, south on Rt. 124 to farm).



## SMUCKER'S SALES SERVICE, INC.

RD #2, BOX 21  
NEW HOLLAND, PA 17557

SALES & SERVICE  
FOR:

**LISTER, PERKINS  
& DEUTZ DIESELS**



2 Cyl. F2L-912

We Have SR2 12 h.p. Lister Diesels, as is or rebuilt.

- Good used diesel engines
- New Sputnik wheels and parts

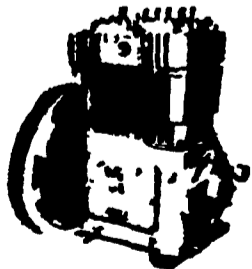
We mount diesels on balers, crimpers, cornpickers, etc.

Install a blower fan for better diesel & refrigeration cooling. Longer life on diesel.



DEALER FOR  
QUINCY AIR  
COMPRESSORS

For lower cost per hour power, rely on



DEALER FOR LISTER DIESELS  
Contact Tim's Diesel Service  
Star Rt.-2 Rebersburg, PA

FOR PROMPT SERVICE CALL  
717-354-4158 OR IF NO ANSWER  
CALL 717-354-4374

## WHATEVER HERD YOU HAVE

- HOLSTEIN  AYRSHIRE  
 GUERNSEY  JERSEY

## FEED FLORIN

DAIRY FEEDS  
TO YOUR HERD  
TO MAKE MILK AND MONEY

For a healthy, highly productive herd, FLORIN Enriched Dairy Feeds are scientifically formulated, tested and proven. Feed it regularly, and see the results...more milk from cows, more money for you.

## WOLGEMUTH BROS., INC.

MOUNT JOY, PA  
PH: 717-653-1451

