

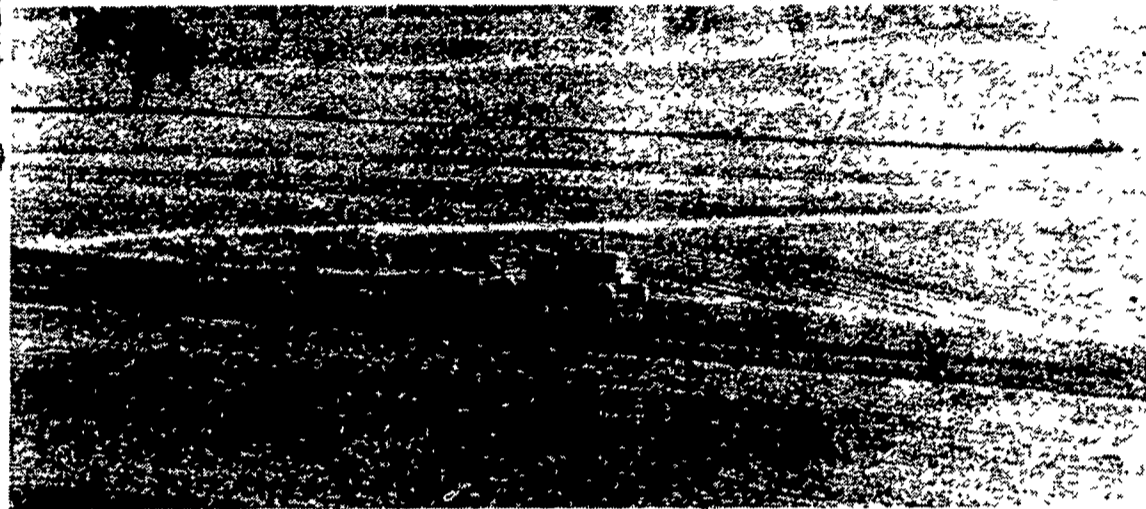
# Lancaster Farming

VOL. 26 No. 30

Lancaster Farming, Saturday, May 23, 1981

\$7.50 Per Year

## Soil Stewardship Week begins Sunday



Being a steward of the soil amidst the wide expanse of the land you work can often be a lonely task. But on the tractor seat with just the hum of the engine to keep you company, are you really entirely alone? Today's Lan-

caster Farming honors such stewards and their work. Numerous conservation stories and photo features, such as on A-22, are found throughout the issue.

## DER ok's 2nd Knouse grant

HARRISBURG — A second \$300,000 grant has been approved by the Pennsylvania Department of Environmental Resources for the apple recycling project at the Knouse Food Cooperative at Peach Glen in Adams County.

The initial DER grant of \$300,000 was made to the Adams County Commissioners for use in the project in January, 1980.

The additional grant is being offered for the Knouse project, according to DER Secretary Clifford L. Jones, because costs of the project have escalated due to inflation and additional safety measures, air pollution controls and insurance.

The grants, now totaling \$600,000, would be used in the second phase of the project to convert apple pomace into useable energy, which is expected to reduce fossil fuel use at the Ortanna Food Processing Plant in Frankln Township by up to 40 percent.

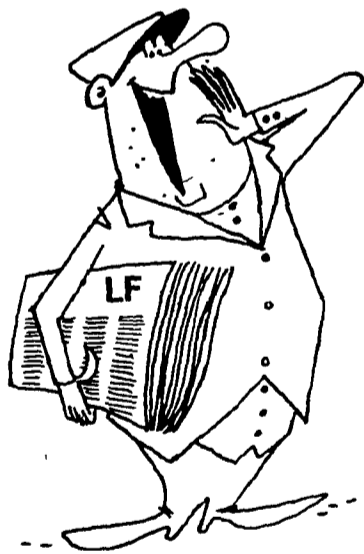
This second phase of the three-step pilot project involves the drying of apple pomace or other

wastes so that they can be burned to produce gas to run the plant's generator.

Knouse Foods financed the initial phase of the project which

(Turn to Page A34)

## "Extra! Extra! Dairy cows make headlines!"



LANCASTER — That's right. In two weeks, dairy cows, dairy producers and dairy delights will hit the headlines for the best-ever issue of Lancaster Farming.

Help us salute June as Dairy Month by sending in your news, ideas, recipes, pictures and enthusiasm. Add your meeting to our Farm Calendar. Cooks, one dairy recipe will be the price for a surprise gift guaranteed to bring a smile. Dairy producers, it's your month so help us celebrate!

So you don't miss out on this special June 6 issue, be sure to send us your news by Monday, June 1. Paid advertising for the issue is also due this date.

Give us a call at 717/394-3047 or 717/626-1164. Or, write Lancaster Farming, Box 366, Lutz, Pa, 17543. Read all about it!!

### REGULAR COLUMNS

Editorials, A10; Now is the Time, A10; Joyce Bupp's column, C8; Ladies Have You Heard, C9; Ida's Notebook, C10; Farm Talk, D6; Dairy Pipeline, D15.

### DAIRY

Chester DHIA, B7; Iodine in feed, D8; Lancaster DHIA, D14; York DHIA, D18.

### HOME AND YOUTH

Homestead Notes, C2; Farm Women Societies, C4; Home On Range, C6; Kid's Korner, C14; 4-H News, C16,17

## Enter your favorite dairy photo in contest

LANCASTER — Dust off the old family photo album.

Root through that bureau drawer.

Or grab your instamatic and run to the meadow or barn.

Lancaster Farming is sponsoring a Dairy Month Photo Contest and you could win up to a \$50 cash prize.

The contest, which will continue until Friday, June 26, is your opportunity to enter that favorite dairy photo you snapped one day around the farm. Instead of just digging it out each time visitors come calling, send it along to Lancaster Farming.

A total of nine cash prizes, ranging from \$20 to \$50 each, will be awarded in three categories of competition.

To qualify, the photograph must have dairy livestock in it. It must have been taken by an amateur photographer — anyone who

doesn't practice photography in their line of employment. Also, livestock photos taken for you by a professional photographer, are ineligible.

The three categories of competition:

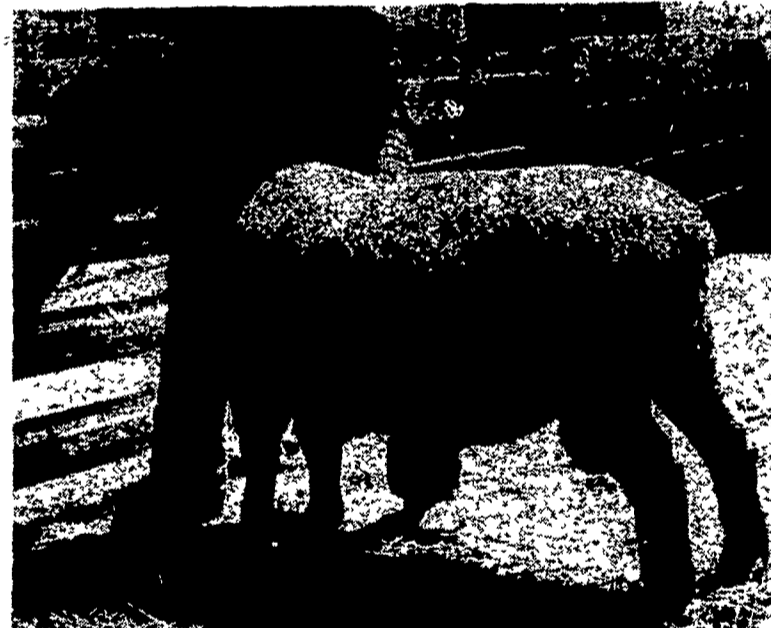
Posed — any photo showing people posed with their favorite dairy animal. It could have been taken at a show or around the farm.

Comic or cute — any photo of a dairy animal in a funny situation or one that suggests a humorous caption. Also, cute photos, such as bottle feeding a calf or a barn kitten catching a spray of milk.

Scenic — any photo showing dairy animals against a pretty, natural background, such as your pasture or meadow.

Three cash awards will be made in each of the categories. These include a \$50 first prize, a \$30

(Turn to Page A34)



Menhennett 681, a Shropshire ram owned by Warn G. Menhennett, Cochranville, turned in a Penn State Test Station growth record of 1.42 pounds per day. His performance surpassed the previous record set in 1977 by a Hampshire ram.

## Shropshire breaks test record

STATE COLLEGE — A Shropshire ram at Penn State's Performance Station has turned in a performance that breaks the center's record. In order to rank in the Number One position, this ram had to out-gain the 221 yearling rams that have been tested at the center since 1977 — the year testing rams began.

The ram, Menhennett 681, belongs to Warn G. Menhennett, Cochranville. This Shropshire ram completed the test with the highest index and the fastest gain for those sheep entered in this year's test, as well as in the center's history. His

average daily gain was 1.42 pounds per day. Menhennett's ram broke the center's record set in 1977 by a Hampshire ram owned by Nevin Zerby. This ram had a gain of 1.36 pounds per day.

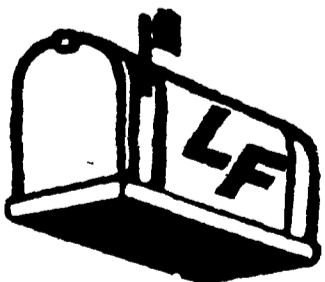
The previous high Shropshire gain was set in 1979 by a ram owned by Ted Kirby. It's average daily gain was 1.26 pounds.

Menhennett also had this year's second high indexing Shropshire on test.

The 1981 top indexing Suffolk

(Turn to Page A34)

Inside This Week's...



Two dairymen tell their conservation stories and convictions to soil stewardship...A24, D10

Some Tennessee Walking Horses just left Lancaster County for a coastal resort in New Hampshire. But they're not going on vacation. Read about their unique and interesting duties. A26

Youngsters with animals are a photographer's delight. But when the Manor FFA took some of their farm livestock to elementary schools this week, it also turned out to be quite an education for both. C18

Twenty lucky students receive scholarships from the Lancaster County Farm and Home Foundation totaling \$15,000. Read all about these ambitious, dedicated youths. C24