



Whoever came up with these makeshift ends for small wagon at Martin's Auction was a bit of a poet. The front end shows the familiar Deere logo and the back end with the word "ear" is actually from an old wood Burma Shave sign.



This vehicle, shown by Paul Z. Martin Jr., must qualify for the prize of coming the longest way. A Cut-Under Swiss Chaise, the vehicle was first taken from Switzerland to England

and then shipped by container to the U.S. for inclusion in the Lancaster County carriage sale. It is among more than 300 vehicles at the auction, which closes today near Intercourse.

Carriage sale

(Continued from Page A21)
half-century ago with the horse knowing the route and every stop that had to be made.

—The doctor's buggy that

(Turn to Page A23)



OVERSTOCK TRACTOR TIRES

Must Sell For Cash

- 13.6x38, 6 ply \$191.15
- 15.5x38, 6 ply \$220.72
- 18.4x38, 8 ply \$364.12
- 20.8x38, 8 ply \$530.00
- 18.4x34, 6 ply \$289.00
- 16.9x30, 6 ply \$224.00
- 18.4x30, 6 ply \$262.00
- 14.9x28, 6 ply \$173.00
- 13.6x28, 4 ply \$140.00
- 16.9x28, 6 ply \$210.00
- 16.9x34, 6 ply \$250.00

★ Above tires are original equipment type, Federal Tax is included in above price.

NEW TIRES - OTHER BRANDS:

- (2) 20.8x38, 8 ply. \$500 ea.
- (2) 14.9x28, 6 ply. \$165 ea.
- (1) 14.9x24, 6 ply Kelly .. \$110.00
- (1) 16.9x28, 6 ply Kelly .. \$175.00
- (1) 16.9x34, 6 ply \$210.00
- (2) 24.5x32 Takeoff \$620 ea.
- (1) 24.5x32 New BF Goodrich \$500.00
- (1) 15.5x38 Seib., 6 ply .. \$175.00
- (1) 18.4x38, 6 ply Farmhand \$250.00

USED TIRES:

- (2) 8.3x34, Very Good ... \$ 55 ea.
- (1) 23.1x34, Very Good .. \$350.00
- (2) 18.4x42 Goodyear ... \$400 ea.

★ We Stock Grass Tires
★ Used Duals in stock
★ New Duals at dealer prices

MUMMAU'S FIRESTONE
Mount Joy, PA
717-653-1260

PUT SOME PLEASURE BACK INTO MANURE HANDLING WITH THESE THREE TOUGH-BUILT MACHINES FROM US FARM



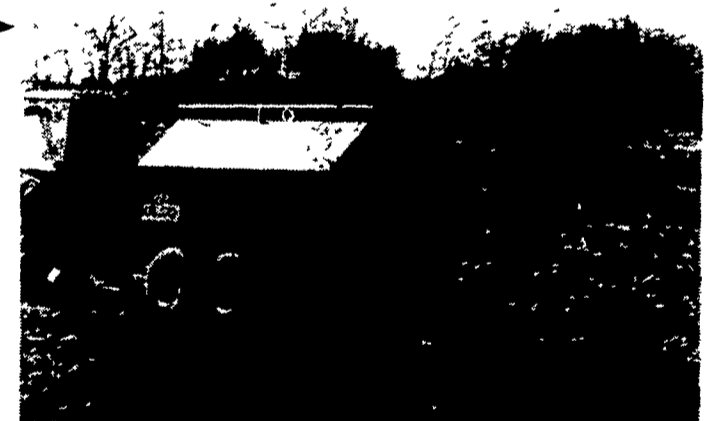
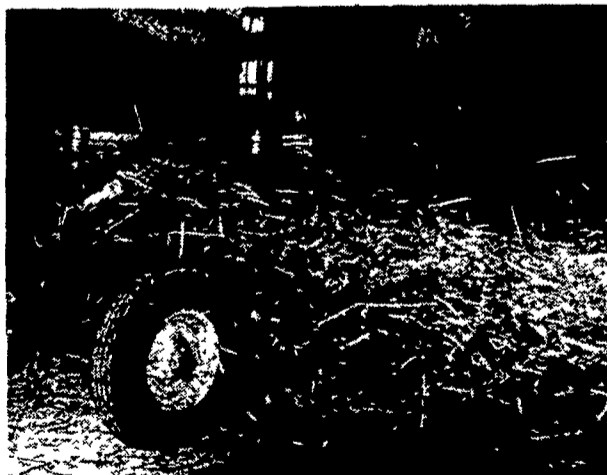
BULL-STRONG MANURE PUMP

You may never see another manure pump with so much brute strength built into it. A 24" propeller provides agitation that farmers are now saying stirs up the slurry in two hours instead of twelve.

A self-cleaning knife on the propeller chops solids in the pit. A 6" fill pipe from a 20" impeller lets you load the tanker in a hurry. Available in models from lagoon, trailer, 3 pt. hitch or stationary applications

SIMPLICITY TANKER WITH FEW MOVING PARTS

With so few moving parts, you know immediately this tanker will be easy to maintain. A fan on the bottom front of the unit, draws in the liquid slurry by gravity and blows the manure up over the tank through a rugged pipe. As the liquid manure is discharged out the back, a special baffle deflects the slurry into a nice spreading pattern onto the fields. Available in a capacity size to fit your farm.



TOUGH-BUILT RED BEDDING CHOPPER

This practical machine fluffs bales of straw, corn fodder and old hay into liquid absorbent bedding that leaves no more long stems to clog your liquid manure system. Designed for the modern dairy farm, you have three models to choose — electric, gasoline or battery powered motors.

So put some pleasure back into your manure handling with these three tough-built machines from

US Farm Systems of Pennsylvania

Fill in this coupon and mail it to:

US FARM SYSTEMS
of Pennsylvania
You Tough Built Red Bedding Chopper Distribute

4020 Blue Ball Road,
Nottingham, PA 19362
Or Phone
(301) 398-2948

Please send me information on
 Tough-built, red bedding chopper
 Bull-strong manure pumps
 Simplicity tanker with few moving parts

NAME _____
ADDRESS _____
TOWN _____ STATE _____ ZIP _____
Phone (_____) _____
I farm _____ acres and have
Hogs _____ Cows _____ Steers _____ Chickens _____