

## Mother's Day on the farm

Tomorrow's Mother's Day — and Lancaster Farming doesn't want to miss it's one-day-a-year chance to salute the keystone of the farm family.

Over the years, however, we have noticed some special attributes that are distinctly a farmstead mother's special quality.

For instance, take 'Hen'rietta. She's a mother who doesn't 'cackle and cluck' whenever she's feeling 'cooped' up. She just reminds her husband about the new wing added to the barn, or the

latest ventilation system that had to be installed. Then, casually placing the plans for a new kitchen (that just happened to appear out of thin air) in a strategic spot over the television or egg markets, she sits back and patiently waits.

And having a lot of "chicks huddling under her wing" gives 'Hen'rietta a feeling of pride and responsibility — something to crow about as the children grow up and leave the nest.

Just down the road on a neighboring farm, 'Mare'y

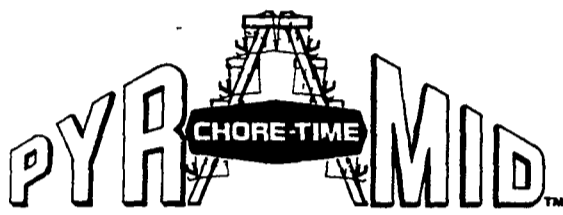
disproves the old saying that mothers are 'nags'. She wouldn't dream of saying something that could be interpreted as being pushy or bossy. She just reminds everyone that a swift kick might be the remedy for anyone forgetting to clean their room or do their chores.

And then there's 'Nan' — she never let's anyone get her goat. As for all that garbage of getting up at 4 a.m. to get ready for milking — she eats it up. And traveling salesmen know better than to lock horns with her

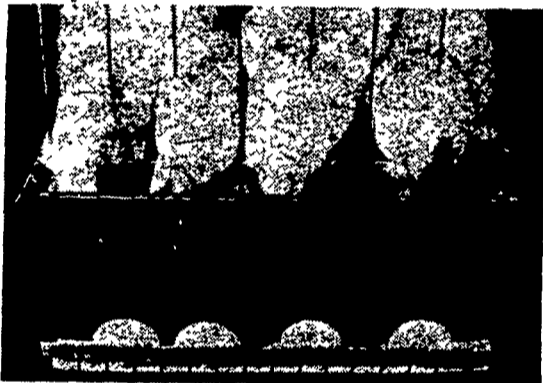
Don't forget 'Sow'ly. Although she's been called a stick in the mud, she really knows how to ham it up and keep everyone's spirits high, despite the price of p-p-p-p---eanuts.

And last but not least is Jessitow' who is utterly indispensable to the farm. Her gentle ways and understanding eyes can melt even the coldest bill-collector's heart. Her only fault would be she sometimes overdoes herself and becomes flushed

### LEADERS IN REVERSE CAGE RESEARCH & DEVELOPMENT



### REVERSE CAGE LAYER SYSTEM



#### LESS BIRD STRESS

The system has been designed for bird comfort! Each bird has her place at the feed trough. Each has easy access to water. Obstruction to light and the flow of air have been greatly reduced, providing more uniform ventilation and lighting for every bird. Combined with Chore-Time's automatically controlled air inletting system, you get a layer house environment designed for bird comfort and the resulting better production.



Not only the physical shape of the feed trough, but the operation of the feeder has been engineered to reduce feed waste. The trough shape cuts down on feed loss from "raking" and "biling," while the feeder has been specifically designed for Chore-Time's programmed and performance feeding concept

★ LET US SHOW YOU A REVERSE CAGE SYSTEM IN OPERATION

### CHORE-TIME

### The Air System With A Mind Of Its Own

Until now, most ventilation systems had one drawback. Air inlets had to be opened and closed by hand.

This was time consuming — and pretty much a matter of guesswork.

Now, Chore-Time has eliminated this problem.

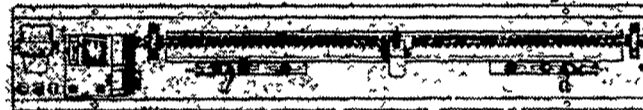
The Chore-Time system has a mind of its own and adjusts inlets — in conjunction with

fan operation — to maintain air pressure at a constant, preset level.

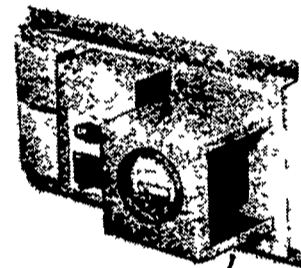
This provides a degree of air and moisture accuracy never before possible in poultry and livestock buildings.

The new inlet control (pictured) is just one of many exclusive features that make Chore-Time air systems number one in performance and reliability.

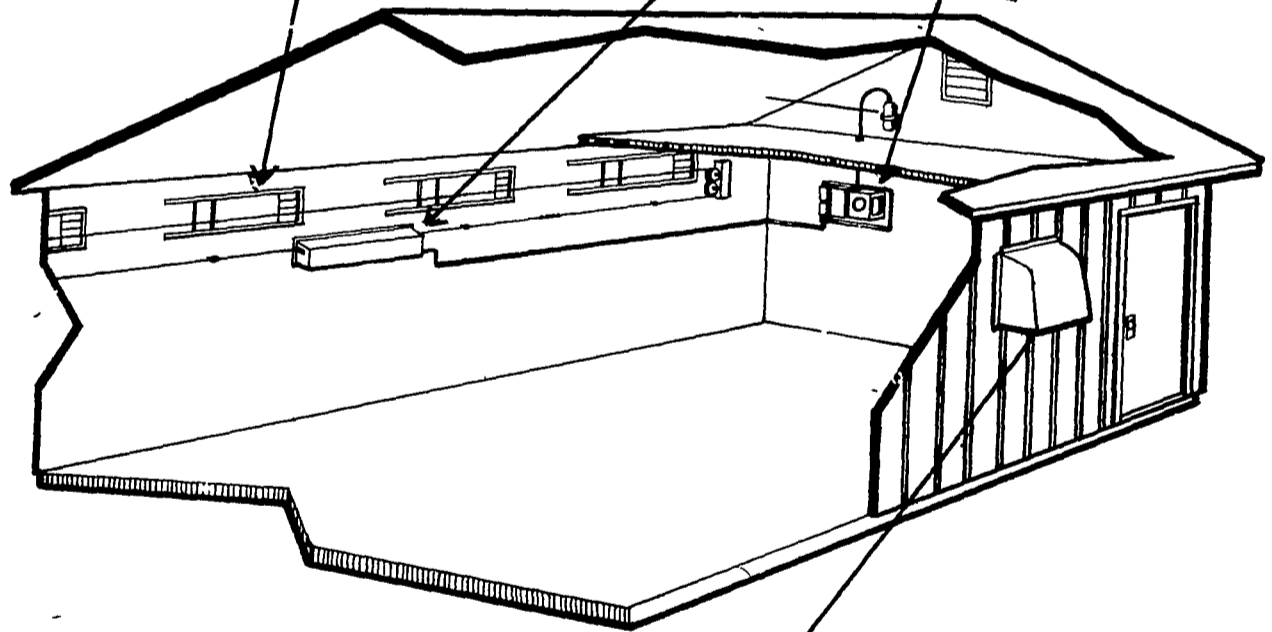
#### INLET POWER PACK



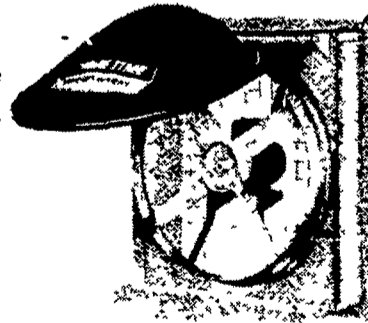
#### AIR INLETS



#### AIR INLET CONTROL

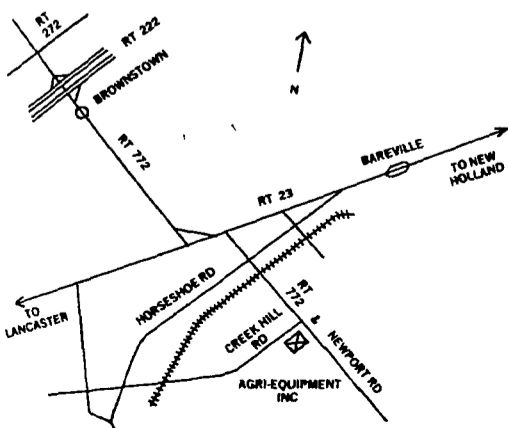


Four basic components go into the makeup of this ventilation system.. the fan, the inlet, the air inlet power pack, and the controls. Coordinated, these four basic components can provide you with better conversion and performance by removing stresses due to lack of oxygen, excess humidity, noxious gases and temperature extremes



Reliability through simplicity, Chore-Time's advanced air system provides automatic control of incoming fresh air, moisture and heat for productive environmental control in agricultural buildings.

#### AUTOMATIC HOOD FAN



## AGRI-EQUIPMENT, INC.

CATTLE — HOG — POULTRY EQUIPMENT  
2754 CREEK HILL RD., LEOLA, PA 17540  
PHONE: 717-656-4151

★ SERVING PA, N.J. and N.Y.

YOUR COMPLETE CHORE-TIME EQUIP. DISTRIBUTOR

STORE HOURS:  
Mon.-Fri.  
7:30 to 4:30  
Saturday -  
7:30 to 11:30  
Parts Only