

Bradford Co. DHIA

(Continued from Page D6)

Charles Harris	B3	41.7	95.6	44.3	4.1	1.80
Paul Sargeant	B3	41.0	89.6	44.6	4.0	1.80
Springcroft Farm	B3	99.4	81.8	47.2	3.8	1.79
Art & Joan Gover	B3	41.2	79.6	48.1	3.7	1.79
James VanBlarcom	B3	42.7	95.3	44.8	4.0	1.79
Walter G. Wheaton	B8	53.4	90.5	46.9	3.8	1.79
D. & C. Bagley	B3	50.5	80.6	46.9	3.8	1.79
S & L Cook	B3	29.4	87.2	46.7	3.8	1.79
J. Howard & Sons	3	67.1	90.8	46.0	3.9	1.78
Robert S. Thomson	3	75.8	84.8	45.5	3.9	1.78
Cragle Knolls	B3	45.1	87.9	44.4	4.0	1.78
B & D. Earls	3	57.0	87.3	44.4	4.0	1.78
Arlyn Wilbur	B3	45.1	79.1	42.2	4.2	1.77
Jenkins & Son	00	51.4	95.5	43.6	4.1	1.77
James Howard	3	66.8	80.4	43.5	4.0	1.76
Myron Bristol	B3	41.1	87.7	50.2	3.5	1.76
George W. Lee	B3	53.8	72.6	46.0	3.8	1.76
Russell Stowell	G3	41.6	89.8	44.2	4.0	1.75
Tige RLUV Dairies	B3	82.2	88.1	46.6	3.8	1.75
Manleyview Farms	B3	50.0	86.0	49.1	3.6	1.75
Nancy K. Bean	B3	27.1	79.8	46.4	3.8	1.75
E. & B. Harris	4	53.0	84.2	35.3	4.9	1.74
Richard B. Reagan	3	42.6	80.2	46.5	3.7	1.74
Mapoval Farms Inc	3	87.0	85.5	44.8	3.9	1.73
Ralph Tewksbury	B3	54.3	90.7	45.9	3.8	1.73
William Smith	B3	71.7	90.2	44.7	3.9	1.73
G. & D. Ayres	B3	86.3	90.8	49.5	3.5	1.73
Raymond Scrivens	B3	54.3	78.3	42.4	4.1	1.73
Roy Watson Farm 1	4	74.9	84.2	30.8	5.6	1.72
Wilcox Bros	2	80.6	91.3	34.2	5.0	1.71
J. William Swingle	4	49.0	88.1	35.1	4.9	1.71
Matt Will	B8	67.0	85.6	46.1	3.7	1.71
Ron Lin Farms	B3	34.7	90.4	43.3	3.9	1.71
Caikins Farm	3	70.1	85.4	44.4	3.9	1.71
Madigan Farms	B3	84.6	87.3	48.1	3.6	1.71
Harvey Hennip	3	38.6	91.2	47.2	3.6	1.70
Mrs. Schucker Jr	3	35.0	83.0	44.1	3.9	1.70
Wilford Heater	B3	28.0	82.7	46.6	3.6	1.70
H & V Harkness	G3	63.7	93.8	42.0	4.0	1.70
O & D Hawthorne	B3	31.0	87.2	43.1	3.9	1.70
G & J McMurray	B3	49.0	88.0	47.5	3.6	1.69
Gary Butcher	3	47.6	87.7	42.2	4.0	1.69
B. A. Andrien Sr	4	30.4	87.3	34.0	5.0	1.69
Roof Farms	B3	30.6	89.9	40.0	4.2	1.68
Kendall Strawn	B3	53.0	84.5	43.7	3.8	1.68
Shores Brothers	B3	36.0	81.2	46.0	3.7	1.68
H. Russell & Sons	B3	44.7	80.8	39.2	4.3	1.67
William Eick	4	59.2	87.9	33.8	4.9	1.67
Earl Browning Fm	B3	38.5	82.2	41.1	4.1	1.67
Barrett Brothers	B3	63.7	83.7	40.2	4.1	1.66
Sheldon L. Millard	3	51.1	82.8	45.5	3.6	1.66
Roy Beardslee	3	95.8	87.4	43.0	3.9	1.66
Lyle Harkness	B3	42.7	93.0	40.7	4.1	1.66
Hermit Hill Farm	G3	34.6	86.5	47.6	3.5	1.66
Parks Knoll Farms	B3	96.9	88.9	45.0	3.7	1.66
Robert Eick	4	49.1	87.3	33.2	5.0	1.65
Gene Miller	B3	76.1	92.1	41.3	4.0	1.65
Frank Purcell	B3	24.6	87.2	44.1	3.7	1.65
Russel Century Fm	B3	23.0	89.9	44.0	3.7	1.64
Merle Watson	B3	49.3	87.1	42.3	3.9	1.64

Ralph Burgess	3	29.9	90.3	43.4	3.8	1.64
Gerald W. Twigg	G3	127.9	92.5	41.4	4.0	1.64
Wayne J. Felter	G3	25.0	96.0	45.0	3.6	1.64
Alamont Farm	B3	45.0	82.8	44.8	3.6	1.63
Kenneth Higley	B3	86.1	79.2	39.8	4.1	1.63
John Cuiver	3	79.0	80.4	42.6	3.8	1.62
D. & J. Bedford	B3	65.8	84.4	41.4	3.9	1.62
G. Henry Turkell	B3	23.1	91.6	43.1	3.8	1.62
L. & D. Rathbun	B3	29.0	89.0	44.1	3.7	1.61
Clifton McMurray	B3	63.9	80.8	41.4	3.9	1.61
John Hulslander	B3	42.1	89.3	43.2	3.7	1.61
Larry B. Wright	B3	56.5	78.6	39.9	4.0	1.61
Frank Herman Jr	B3	38.6	77.5	40.9	3.9	1.60
Lazzell Watkins	B3	63.8	70.3	39.1	4.1	1.60
Galen Woodruff	G3	23.5	90.8	42.5	3.8	1.60
Donald Jennings	B3	49.7	100.0	42.6	3.7	1.59
M. & L. Wanck	B3	61.1	89.5	42.4	3.8	1.59
Richard Jenkins	3	64.4	76.4	39.4	4.0	1.58
Jacob H. Wrisley	B3	49.8	86.8	41.9	3.8	1.58
Charles Allen	B3	125.4	82.1	41.3	3.8	1.58
Brackman Bros	2	88.4	83.4	33.2	4.7	1.57
Robert L. Storch	3	64.4	81.9	42.5	3.7	1.57
Shedden & Family	G3	70.3	78.2	42.0	3.7	1.57
D. & D. Colton	B3	24.0	88.2	37.0	4.2	1.57
W. H. Kapichok Jr.	B3	32.0	96.6	42.8	3.7	1.57
Nick Ugliuzza	G3	30.6	91.8	41.0	3.8	1.56
Gary Rockwell	3	49.5	86.7	38.9	4.0	1.55
B. & D. Tillinghast	3	95.0	85.9	43.0	3.6	1.55
Edward H. Morse	3	43.9	82.8	41.3	3.8	1.55
Champluvier & Son	3	60.3	75.0	39.3	3.9	1.54
Donald E. Cole	5	47.4	80.0	32.9	4.7	1.54
Le Canville Farm	3	57.0	78.8	38.8	4.0	1.54
Duffield Farms	B3	45.0	85.2	39.0	3.9	1.54
Janet MacWhinnie	G8	12.0	89.2	32.8	4.7	1.54
Wm. Hollenback	B3	52.3	79.2	40.2	3.8	1.52
Rob-Maple Hill Fm	B3	64.8	86.5	39.4	3.9	1.52
Gary L. Ritz	B3	64.7	82.0	41.5	3.7	1.52
Keith Felter	G3	36.8	87.4	38.5	3.9	1.52
Richard G. Tice	G3	60.1	92.6	40.9	3.7	1.52
Edward H. Morse	3	44.0	84.8	42.7	3.5	1.51
B. Kilmer & Sons	3	36.3	81.0	38.5	3.9	1.51
Glenn Felter	B3	55.5	80.5	40.9	3.7	1.51
Kerryview Acres	B3	61.0	73.6	39.7	3.8	1.51
Peck Hill Farms	B3	92.0	75.5	43.0	3.5	1.50

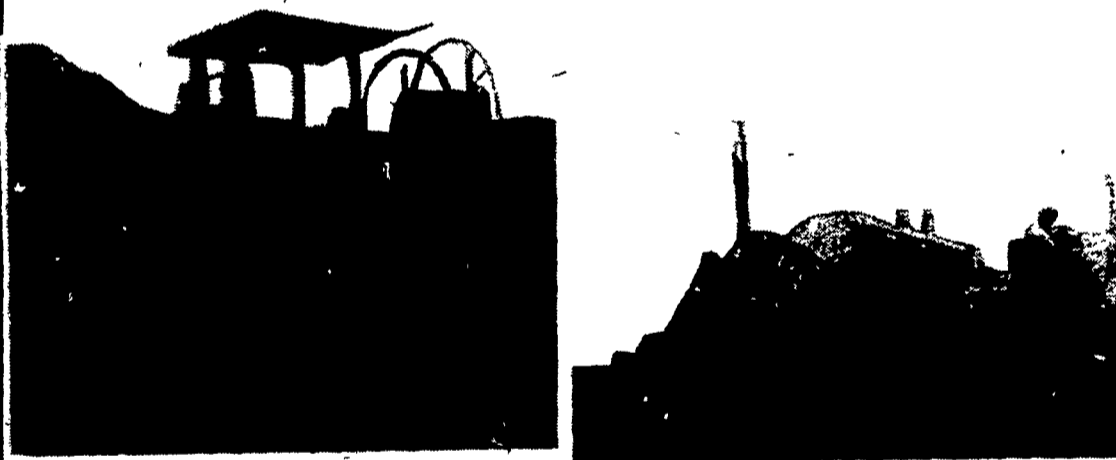
OWNER NAME OR NO.	AGE AT CALVING	DAYS IN MILK	LBS MILK	LBS FAT
Gary Rockwell				
Pollyl	3	5	305	18,625
Y. Run Dairy Farms				
Jewel	3	5	294	18,306
Jody	3	4	305	21,510
Leslie	3	3	305	23,424
James Mattocks				
Skyline	3	9	305	14,983
Sky	3	4	305	19,059
Angel	3	3	305	16,328
Mapoval Farms Inc				
Barbara	3	10	305	24,193
T. Alma	3	2	305	17,233
Fox Chase Farms				
51-0	3	2	305	18,380
Wm. Bruce Bresee				
Leah	3	4	305	19,582

Lancaster Farming, Saturday, May 9, 1981-D7

Wilcox Bros					
Jessica	2	5	305	15,304	750
Gigi	2	4	305	13,947	719
Minuet	2	3	305	15,939	806
Grace	2	3	305	14,695	761
Ena	2	2	305	15,629	654
Bennett R. Young					
Nord 40	3	5	305	20,873	771
Dale Mattocks					
Junie	3	4	305	19,708	807
Russel L. Jones					
Adine	3	9	283	20,867	828
Lena	3	6	305	25,612	814
Thomas McCarty					
56A	3	4	305	19,461	810
213	3	2	305	14,836	621
John H. Howard & Sons					
Sunray	3	7	305	21,578	868
Sarah	3	2	305	18,698	621
Lynn & Bonnie Miller					
Mattie	3	4	305	23,019	916
Spice	3	2	305	15,308	612
Vernon & Robert Allis					
Mel	3	8	288	17,854	712
Veda	3	6	305	18,728	782
Corner	3	4	295	17,713	779
Wm. S. Davis Jr					
78	3	5	305	17,503	729
Dean & Jack Bedford					
Paris	3	5	305	19,458	719
Elwin Roberts					
47	3	4	305	19,671	846
48	3	4	305	19,750	795
Glen & Arlen Landis					
Charlen	3	5	305	18,093	709
Hannah	3	4	305	25,326	971
Irma	3	4	305	19,675	792
Sue	3	3	305	18,013	808
Bev	3	3	305	21,457	813
Russell Stowell					
40	3	9	305	16,887	709
22	3	7	305	23,850	806
Clarence & Keith Crain					
Melinda	3	4	305	18,310	709
Jackie	3	5	305	23,648	832
Angel	3	2	295	14,331	601
Louis Sturdevant					
Martha	3	7	305	17,372	748
Desiree	3	7	299	21,066	845
Rhea	3	7	305	17,316	729
Alvean	3	4	305	18,413	716
Leonard-Robert Cole					
June	3	8	305	21,498	778
Ted	3	8	305	19,339	782
Helen	3	8	305	20,434	795
Trudy	3	3	290	17,440	781
Milford Kinsman & Son					
Bea	3	4	305	21,127	788
Timothy Brennan					
Bobbi	3	2	304	15,470	633
Gerald Stethers					
31	3	4	305	22,689	850

(Turn to Page D8)

DRAINAGE PROBLEMS?



COCALICO EQUIPMENT HAS THE TWO MACHINES TO HANDLE YOUR DRAINAGE PROBLEMS.
 ★ Both machines Equipped with Laser Beam Grade Control

Investment	Typical Annual Return
Land Drainage	21-46%
Farm Buildings	3-23%
Farm Land	11%
Stocks	7-4%
Bonds	6-1%

COMPARE
 Even with the conservative figures shown here, it's obvious that land drainage should top farmers' lists of investment priorities.

★ We Stock Heavy Grade Tubing which Exceeds SCS Specifications. In sizes 4", 6", 8", 10" and 12".

NOW AVAILABLE
 15" & 18" Tubing

★ Also Pipe And Fittings For Tile Outlet Terraces.



COCALICO EQUIPMENT CO.
 DRAINAGE & EXCAVATING
 RD #3, DENVER, PA 17517 PH: 215-267-3808

The Farmer Automatic 4 Deck Cage System

A system well devised and constructed for an uncomplicated and economical operation, modern and advanced, it will help you to gain your well deserved maximum return on your investment.

More layers per square foot of building space, more than any other system on the market today, 10,000 layers per 285 cage row.

Lower maximum cage height, even lower than most 3 deck systems (6'8" max. height, 4'6" max. width).

No special and costly floor or pit construction.

The 4 deck system can be installed in an existing building, without costly conversion or remodeling problems.

Double or even triple your current building capacity.

Automatic manure removal, giving an odor free environment, healthier animals, more pleasant and healthier working conditions.

Higher bird concentration assures a comfortable, energy saving temperature during cold season.

Summer ventilation is easier to accomplish because of the absence of ammonia and other fumes.



Energy Saving Design
 Only 3 fractional horsepower motors per row accomplish the automatic feeding, automatic egg conveying and automatic manure removal.

THE FARMER AUTOMATIC OF AMERICA, INC.

By Reynolds and Yellott Co., Inc
 12802 Gores Mill Rd
 Reisterstown, MD 21136
 301-833-1840

Write for Full Information

NAME _____
 ADDRESS _____
 CITY _____
 STATE _____ ZIP _____