

Dairy Expo

(Continued from Page D2)
 the winners, some of the comments
 uttered with loud, sincere tones
 while others ringing with hollow,
 superficial strains.

And finally at day's end, as the
 shadows lengthen into stringy
 shades of black, the comments of
 two participants sorta sum up the
 sounds of the day.

"Congratulations, Matt, it was a
 good show."

These words were spoken by Matt
 Seipt, of Keystone Farm, R4
 Easton, to whom the 56th Expo was
 dedicated. He's speaking to his
 nephew, Matt Seipt, who just took
 the overall championship of the
 show.

"How's your planting going?"
 Matt asks. Soon, the senior in dairy
 production who's a candidate for
 outstanding honors, will be
 returning to the home 250-cow

operation at Lansdale, Mon-
 tgomery County and resuming an
 active part in Freddy-Hill Farms.

"See you back at the house
 (Alpha Zeta)," Don Seipt replies.

This brief exchange of uncle and
 nephew, who played prominent
 roles in the 1981 Expo seem ap-
 propriate to conclude the sounds of
 the day. One of them as a graduate
 of 30 years ago who returns to have

the Expo dedicated in his honor,
 and the other who gets ready to
 move out into a similar world of
 Holstein breeding and does it on a
 championship note.

Top winners in the Expo com-
 petition, selected by judges, David
 Norman, of Liberty, in
 showmanship; and Ginger



Amber Lange, of Litz, was judged the reserve champion fitter at the Dairy Expo. She also took the reserve fitter championship in the Guernsey competition.



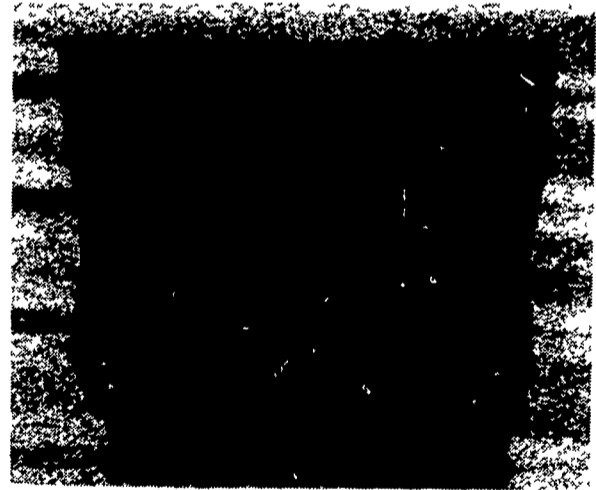
Champion fitter of the Penn State Dairy Expo and the top fitter in the Holstein competition is Alan Wright, of Little Marsh. Alan took part in the largest area of competition in the entire show last weekend.

DRY YOUR GRAIN THE NATURAL WAY

- ★ 75% LOWER DRYING COST
- ★ 50% LESS SHRINKAGE
- ★ LESS POWDER WHEN GRINDING INTO FEED

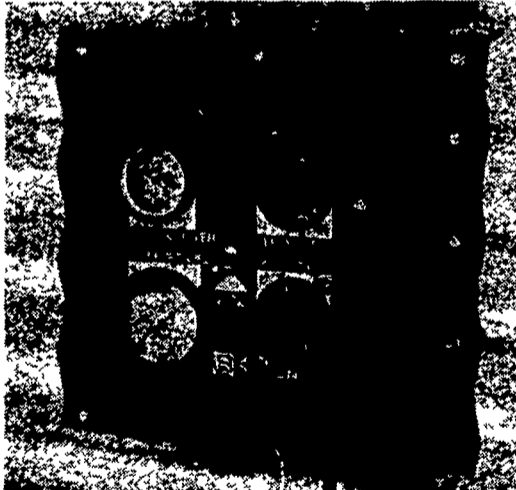
- ★ HIGHER TEST-WEIGHT GRAIN
- ★ HARDER, MORE DURABLE GRAIN - LESS BROKEN KERNELS
- ★ GLOSSIER COLOR

GET THE VERSATILITY YOU NEED FOR AIR DRYING WITH A:



MARTIN LOW TEMP CONTROL

◀ LOW TEMP CONTROL
 PLENUM THERMOSTAT
 WITH PRESSURE
 GAUGE ▶



4 DIFFERENT SETTINGS

1. Automatic Fan Only: fan only runs when the natural air will dry grain.
2. Manual-Fan Only: Fan runs all the time by passing automatic controls.
3. Automatic-Fan & Heater: fan runs continuous. Heater is normally off, but will add only 7% of heat when natural air will not dry grain.
4. Manual-Fan & Heater: fan runs continuous. Heater is operated by the thermostat located underneath the floor of the bin.

ADVANTAGES OF USING THE MARTIN LOW TEMP SYSTEM

1. Dry the way you want with just the flip of a switch.
2. Electric is not wasted by running the fan when the natural air is not drying grain.
3. Cost of LP gas heat is 3 times cheaper than electric heaters or electric drying bulbs.
4. At any time more heat can be applied by the turn of a valve to remove excessive moisture which is giving a problem.
5. Static pressure gauge reveals volume & air going through the grain.

FREE INFORMATION

PLEASE SEND INFORMATION & PRICES ON THE FOLLOWING ITEMS:

- Martin Low Temp
- Continuous Flow Dryers
- Portable Batch Dryers
- Air Drying Systems
- Storage Bins
- Hopper Tanks
- Transport Auger
- Grain Cleaner
- Bucket Elevators
- Dump Pit
- U Trough Auger
- Chain Conveyor
- Mix-Mill Feed Factory
- Mix-Mill Grinder Mixer
- Automatic Mill System
- Pneumatic Feed Blower
- Soybean & Corn Roaster
- Feed Tanks
- Feed Auger System
- Flex Augers
- Ag Fuel Systems
- Others

SECONDARY SALE ON GRAIN BINS, FLOORS, FANS & HEATERS
 In Warranty - Slight Imperfections. Limited Quantity

MARTIN DISTRIBUTORS, INC.

R1, Lebanon, PA 17042
 Phone 717-866-4906
 or 717-866-4555

WAREHOUSE SALE
 Prices Limited to Items In Stock
 New Mix Mill Soybean And Corn Roaster **\$3,900**
 New 40 ft Elevator **\$1,500**

Name _____
 Address _____
 City _____
 State _____ Zip _____
 Phone _____