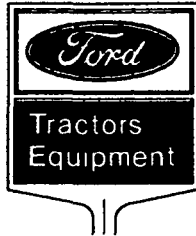


## You Oughta Try A Ford... WHY NOT RENT?



Available  
For  
Rent  
Now...

- ★ TRACTORS - 30 to 84 HP
- ★ PLOW - 4 Bottom
- ★ NO TILL PLANTER — 2 or 4 Row
- ★ AIR PLANTER - 4 Row
- ★ PLATE PLANTER - 4 Row

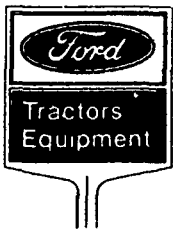
### NEW TRACTOR SPECIALS!

MODEL 5600  
60 HP ..... \$12,695

MODEL 7700  
86 HP  
4 Wheel Drive .... \$20,900



• Free Mower With Lawn & Garden Tractors



### FRANK'S FORD TRACTOR SALES CO.

4531 Kutztown Road  
Temple, PA 19560

215-929-2884  
215-582-3658

215-929-2553  
215-921-3913

## Block appoints John Ford to Deputy post

WASHINGTON, D.C. — Secretary of Agriculture John R. Block has appointed John E. Ford to be Deputy Assistant Secretary of Agriculture for Marketing and Transportation Services. He will serve as deputy to Assistant Secretary C.W. McMillan.

In his new position, Ford will help formulate policy for USDA's Agricultural Cooperative Service, Agricultural Marketing Service, Animal and Plant Health Inspection Service, Federal Grain Inspection Service, Food Safety and Quality Service and Office of Transportation.

Ford, a native of Lubbock, Texas, was raised on his family's ranch in the Texas Panhandle. He earned a bachelor of arts degree in economics and government from the University of Texas, Austin, in 1968, and a doctor of jurisprudence degree from the University of Texas School of Law in 1972.

Before assuming his new

position, Ford served in USDA's Office of the General Counsel and Agricultural Marketing Service.

### Corn data

NEW YORK, N.Y. — Several new product registrations for corn application have been updated recently by the Stauffer Chemical Company. They include:

—Dyfonate 20-G, used to control corn rootworm larvae, may now be used to suppress cutworm. It is also used to control wireworms, symphylans, seed corn maggots and beetles, as well as first and second brood European corn borer in later out-the-top applications.

—Incorporation directions for Sutan Plus herbicide have been revised to recommend single-pass incorporation for control of all labeled weeds except the deep germinating ones — wild cane, seedling johnsongrass and nut-sedge.

—The Sutan Plus label has been amended to note that the Sutan Plus - Bladex tank mix is not recommended for use on coarse or medium textured soils containing less than one percent organic matter.

xxx

About 200,000 commercial dairy farms produce most of the milk in 1979 in the U.S. The trend is toward larger operations but there are many small efficient operations.

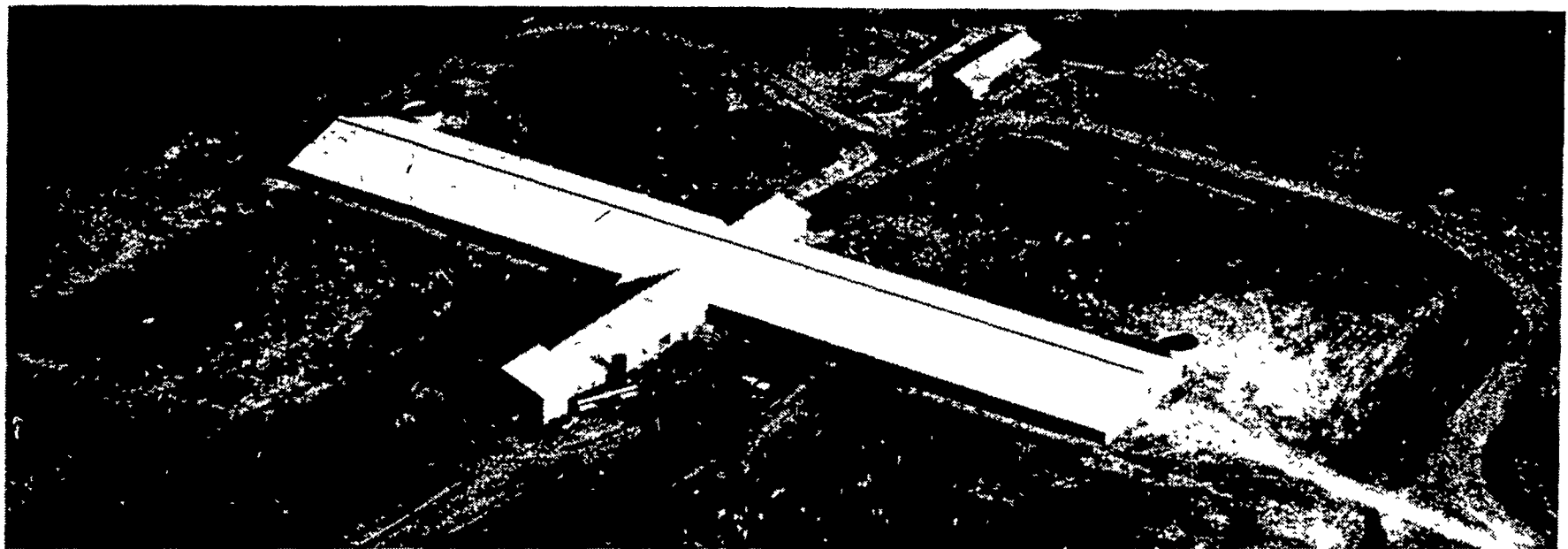
### Combine test data

(Continued from Page B2)

summed up by recommending that farmers contemplating the purchase of a new combine keep in mind six important considerations. They are: The machine's ability to harvest as much crop as possible;

its ability to minimize damage to the crop; its ability to harvest various crops and under various field conditions; fuel consumption based on harvested bushels per gallon of fuel; reliability; and serviceability.

# QUALITY DAIRY SYSTEMS



FAIR HILL FARMS, KENNEDYVILLE, MARYLAND, 500 HEAD FREE STALL DAIRY COMPLEX

Let Us Help You.  
Design Your New  
Dairy System

For information, call or write:



DESIGNERS AND BUILDERS OF SYSTEMS

EPHRATA, R. 4, (Farmersville) PA. 17522  
PHONE 717-354-4271

STORE HOURS: Mon. Thru Fri. 7:30 to 5:30



Authorized Reynolds  
Aluminum Distributor