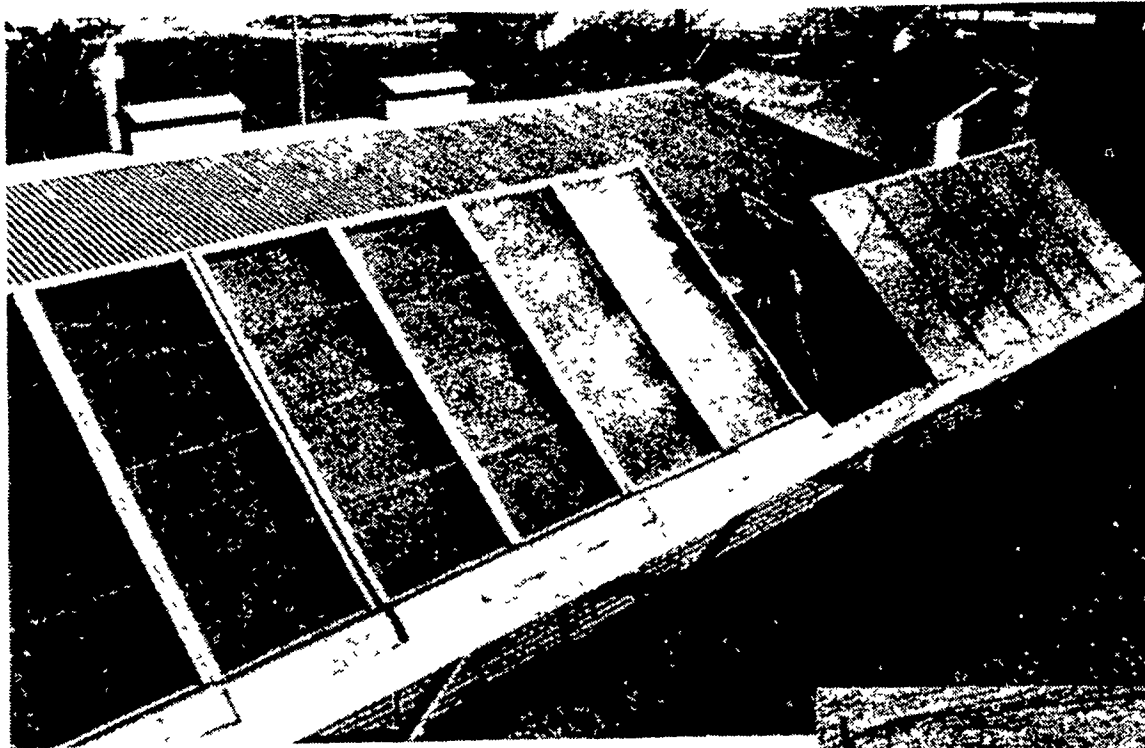
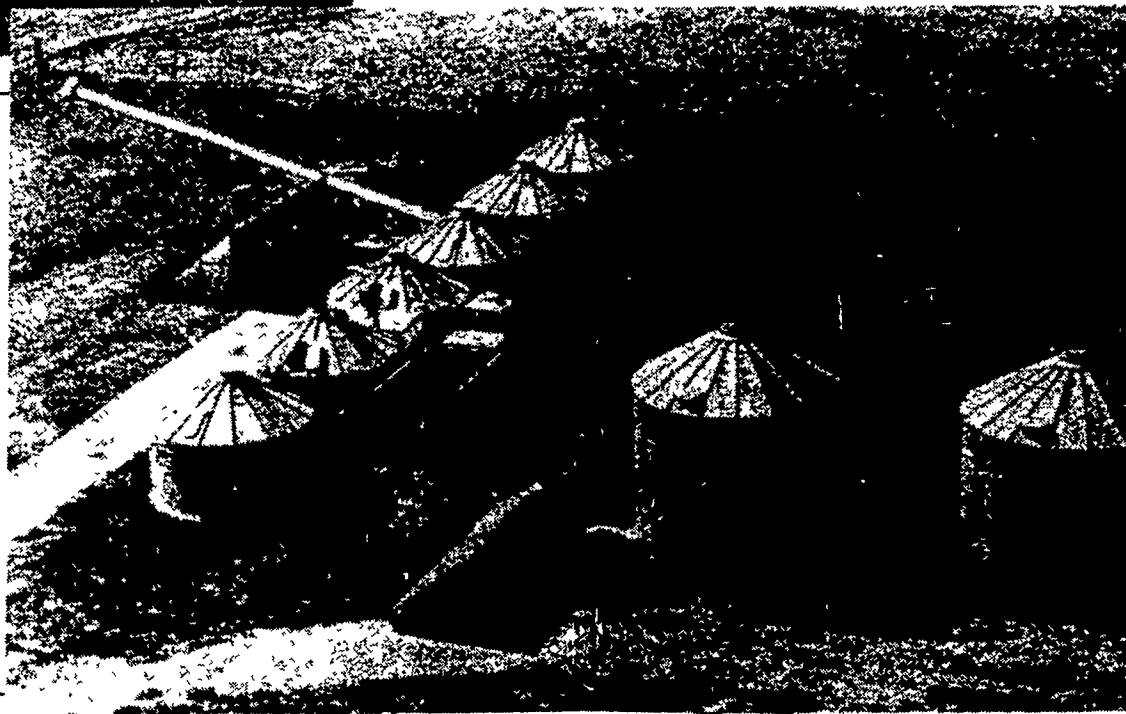


USDA solar research lets



Researchers at the South Central Poultry Research Laboratory, Mississippi State, Miss., have installed two types of solar collectors on a poultry house. The collector in the foreground heats the ventilation air used in the house during the daylight hours. The other collector heats water that is stored for heating the house at night. A researcher checks the pyranometer — an instrument that measures solar radiation.

Three types of solar collection systems are tested in grain-drying research at the U.S. Grain Marketing Research Center, Manhattan, Kan. A flat plate collector (center foreground) provides heat for the two drying and storage bins in the right foreground. The triangle-shaped unit on the left is made of fiberglass and contains 30 tons of rock to store heat. The rocks are painted black to aid heat collection. In both collectors, heated air is moved into the grain-drying bins by fans. The double-wall, air inflated plastic tube collector (upper left) is 100 feet long and has a capacity of 1700 cubic feet per minute. Heated air is moved through the tube by a 3/4 hp electric motor. The drying ability of this low profile system is being compared with that of larger units previously tested.

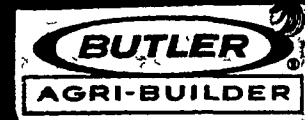


He tank and aid in

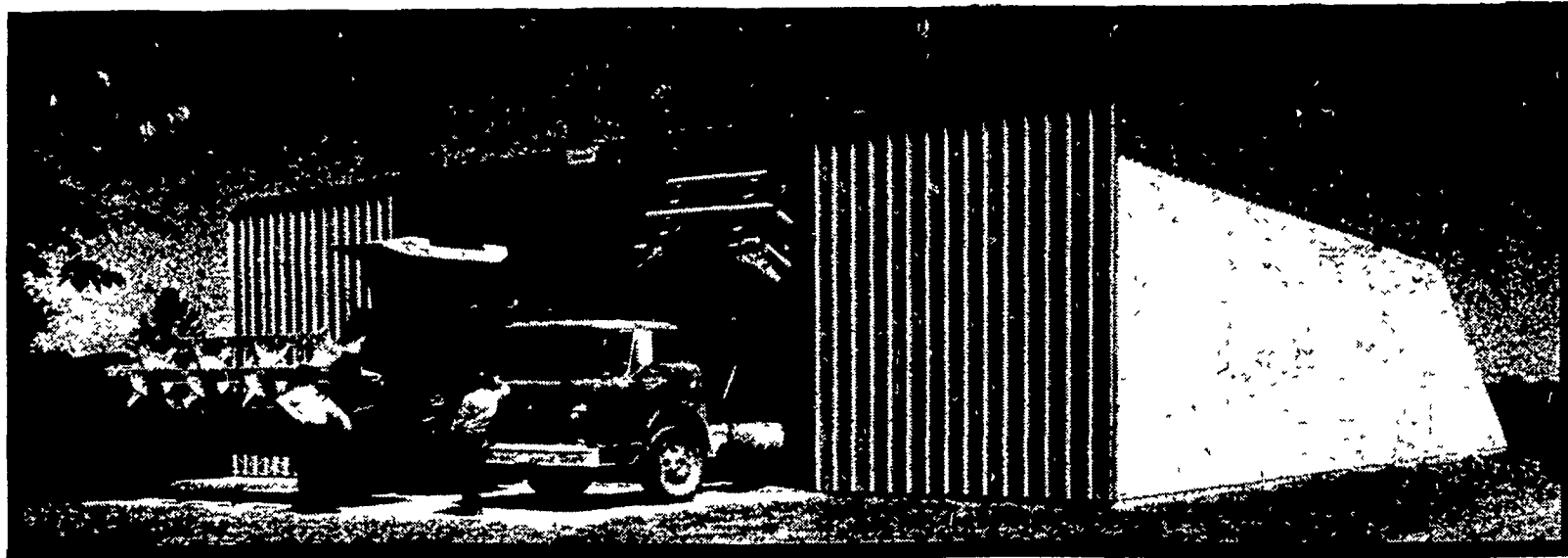
A sol

Butler Farmsted Buildings

SEE YOUR



SEE YOUR



FARMSTED® I - Building Engineered For Farmer Erection

40'x75'x14'
with 20'x13' D/S Door

LESS THAN

\$7,300⁰⁰*

FARMSTED I

Galvalume Walls and Galvalume Roof F.O.B.

20 Year Warranty

BUTLER WARRANTY
SEE YOUR AGRI-BUILDER FOR DETAILS!

* All Building F.O.B. Annville, Pa.
* (Buildings not equipped as shown)
* Prices Based on Survey of Agri Builders
* Prices Could Vary With Each Agri Builder
Various Sizes Height and Weight Available

P. E. HESS, BUTLER MFG. CO.
Box 337, Oxford, PA 19363



Dealer Inquiries Available in Pennsylvania Counties
Armstrong Indiana Erie Crawford Warren Elk
Cameron McKean Clinton Lycoming Sullivan
Wyoming Luzerne Columbia New Jersey Counties
Sussex Morris Passaic Atlantic Cape May
No Dealer Fees

Name _____

Address _____

County _____ Zip _____

City _____ State _____

Phone _____

(Include area code)

LF

LEASE BUILDINGS & BINS ON MONTHLY OR YEARLY PRO

KNOXVILLE CONSTRUCTION
P.O. Box 535
Knoxville, Pa 16928
PH 814-326-4188

B.T. CONSTRUCTION
P.O. Box 535
Biglerville, Pa 17307
PH 717-677-6121

LEROY E. MYERS, INC.
Route #1, Box 163
Clear Spring, Md. 21722
PH 301-582-1552

D. E. SMITH, INC.
Mifflintown, Pa 17059
PH 717-436-2151

POGO INC.
1841 Jerry's Road
Street, Md. 21154
PH 301-692-5350

FOUR COUNTIE CONTRACTOR
R D . Box 249
Coalport, Pa. 16627
PH 814-672-5751

A. E. ENGEL, INC.
P O Box 216
Marlton, N.J 08053
PH 609-983-4404

C & M SALES INC.
R D #1
Honesdale, Pa 18431
PH 717-253-1612

ORVILLE MACK
P O. Box 47
Nazareth, Pa. 18064
PH. 215-759-1331

BRIDGEWATER BUILDING SYSTEMS INC.
R D. #2
Thompson, Pa 18465
PH 717-727-2868

O. A. NEWTON & SON CO.
Bridgeville, Delaware 19933
PH. 302-337-8211

NICKLIN STEEL BUILDERS
301 N Broad Str
Grove City, Pa. 16
PH 412-458-72