

Successful poultry fund drive ends

GEORGETOWN, Del. — Over 2,500 people ate chicken dinners at the Wicomico Youth and Civic Center on April 21. The occasion was the annual Delmarva Poultry Booster Banquet, which climaxed the 1981 fund drive for Delmarva Poultry Industry, Inc.

Banquet chairman, Gerald B. Truitt, Jr., declared that the \$100-a-plate dinner was one of the biggest and best in DPI history.

Leon J. LaChance, DPI first vice president and 1981 fund drive chairman, announced that \$289,100 was raised.

LaChance praised all the fund drive workers for their fine efforts in achieving the largest amount of money ever raised by the association to continue its work in product promotion, industry improvement projects and consumer information.

Special guests attending the banquet included U.S. Senators William V. Roth, Jr. of Delaware and Paul S. Sarbanes of Maryland, as well as Congressman Roy Dyson and Congresswoman Majorie Holt, both from Maryland. Roth and Sarbanes commended the poultry industry for its contributions to the Delmarva economy.

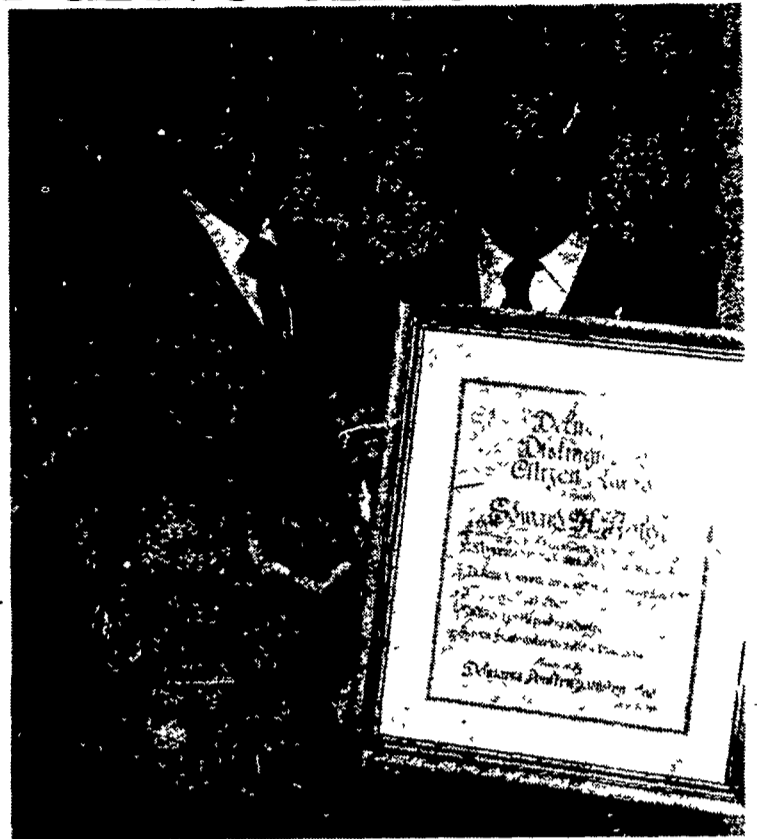
Robert K. Holland, DPI president, noted that Delmarva's closeness to its major markets

gives it an advantage over many other broiler producing areas. He ended his remarks on the optimistic note predicting that the expected population growth in the world in the next twenty years will provide great opportunities for increased production of poultry.

DPI honored thirty-two outstanding poultry and hatching egg producers for their performance during the past year. These producers were selected by the companies with which they work

as the best producers for the year.

Tom Maguire, farm director of WSBY and WQHQ of Salisbury, Md., was awarded the 1981 DPI Medal of Achievement. This award is presented each year to a public servant on behalf of the area's poultry industry. Maguire has long been considered the "voice of Delmarva agriculture" and through this reporting always has been a strong supporter of the poultry industry.

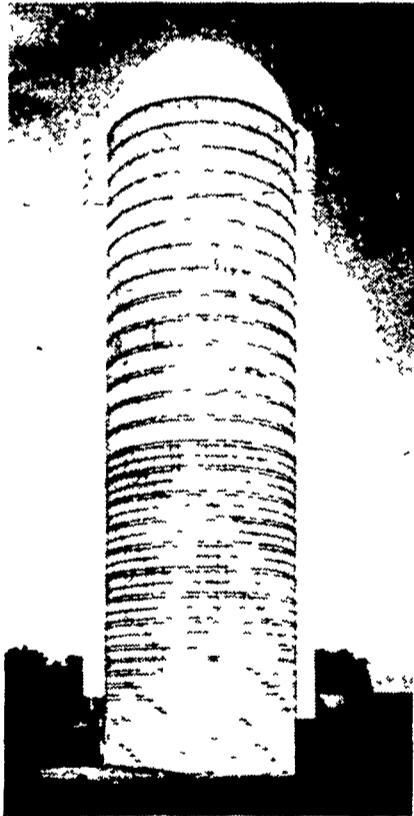


Tom Maguire, left, farm director of WSBY/WQHQ of Salisbury, Md., is the 1981 recipient of the "DPI Medal of Achievement." Edward H. Ralph, right, executive secretary of Delmarva Poultry Industry, Inc., was named by his own association as Delmarva's Distinguished Citizen for 1981. These presentations were made at the recent DPI poultry Booster Banquet which climaxed the 1981 annual fund drive. A total of \$289,100 was collected and will be used for the continued progress of the poultry industry.

The PROVEN Fickes MASTER-MATIC SILO SYSTEM

Master-Matic is the proven automatic silage handling system first introduced in the eastern United States by Fickes over a year ago. There's no longer any need to enter the silo. Once filled, the silo can be unloaded from top to bottom—automatically. The Silo-Matic Continuous-door Unloader moves down the continuous doors to unload haylage, corn silage or high moisture corn. It operates effectively, efficiently and without mechanical problems.

The Fickes-Master-Matic Silo System offers you:
CONVENIENCE—Puts an end to the chore of climbing the silo every few days.
TIME-SAVING—Keeps you out of the silo so you can spend your time to more profitable advantage.
CLEAN ENTRY CHUTE—Continuous door chute used for unloading. Second chute doors remain in-place always clean.



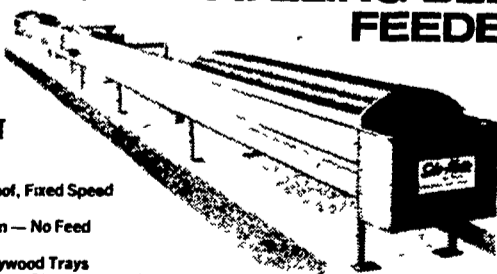
SILO-MATIC CONTINUOUS-DOOR SILO UNLOADER
 This exclusive unloader design has been in use on continuous-door silos for more than a year. It has been thoroughly tested and proved under farm operating conditions with haylage, corn silage and high moisture corn. The Silo-Matic Continuous Door Silo Unloader automatically moves down the silo from door to door. The goose-neck stays in perfect alignment with the chute doors and head remains in ideal position for maximum silage carrying efficiency. There are no springs, ropes, cables or pulleys to adjust since the downward movement of the unloader operates by gravity. The electric cable is plugged into a power source at the top of the silo. The electric cable automatically uncouples as the unloader moves down the silo.



Silo-Matic TRAVELING BELT FEEDER

FAST, HIGH VOLUME CATTLE FEEDING WITHOUT SEPARATION

- Smooth, Slip-Proof, Fixed Speed Drive
- Even Distribution — No Feed Build-Up
- Belt Glides on Plywood Trays
- Self-Tightening, Self-Cleaning Feed Belt
- Low Horsepower Requirements
- No Separation of Mixed Feeds
- Optional Automatic Reversing Switch for Continuous Feeding



Clean Chute—This photograph shows the clean chute side of the Fickes silo. This system provides clean entry to the silo at all times. Doors are "refrigerator fit" Fickes Swingback hinged doors.

Unloading Chute—The continuous door column chute shown here with continuous door covers in closed position for loading silo fill.

CONTINUOUS DOORS—The Fickes Continuous Doors can be placed at almost any location desired in the circumference of the silo. They require no special rails or spacers. The small doors (8 1/2" x 15") are welded tightly against a steel jamb. The silo is loaded with doors in place.

Please fill out and mail the coupon below. Fickes will mail complete information to you.

Please send me complete information and details on the New Fickes MASTER-MATIC SILO SYSTEM

NAME _____

ADDRESS _____

CITY _____ STATE _____ ZIP _____

TELEPHONE (AREA CODE) _____

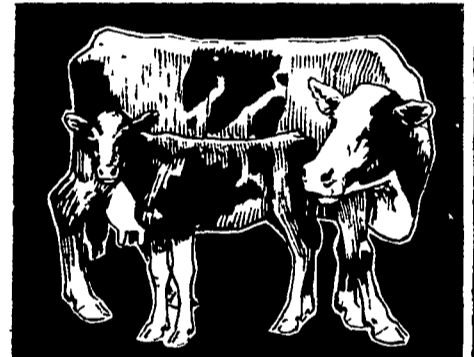
FARMER STUDENT



PH: 717-776-3129

Introducing The ALL NEW

HONEY BROOK NATURAL 20 ENERGI BLOCK



For Dairy And Beef Cattle

Net Wt. 50 Lbs.
GUARANTEED ANALYSIS

Crude Protein, Minimum	20 percent
Crude Fiber, Maximum	5 percent
Crude Fat, Minimum	1 percent
Calcium, Maximum	2.5 percent
Calcium, Minimum	1.5 percent
Phosphorus, Minimum	2 percent
Salt	None
Vitamin A	25,000 USP per LB
Vitamin D	5,000 USP per LB
Vitamin E	10 IU per LB
Sugar as Invert	40 percent

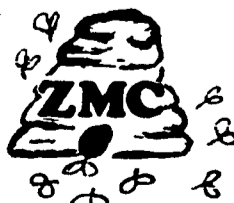
INGREDIENTS Beet Molasses, Soybean Meal, Phosphoric Acid, Calcium Oxide, Zinc Sulfate, Ferric Sulfate, Manganese Sulfate, Copper Sulfate, Ethylenediamine Dihydroiodide (source of iodine), Cobalt Sulfate, Vitamin A Palmitate, Vitamin D Supplement, Vitamin E Supplement, Soy Oil

Contains NO UREA - All Natural Protein

Remember... **ENERGIBLOCK** contains no salt and is not affected by the weather.



FOR ADDITIONAL INFORMATION CALL US.



ZOOK MOLASSES CO.

BOX 160, HONEY BROOK, PA. 19344

Phone 215-273-3376

or 717-393-3987

Call toll free in area code 215 & 717-800-662-7464