

# Give Eggs a Break



## DARI-KOOL...THE #1 TANK ON THE MARKET

IN ADDITION TO OUR REGULAR DISCOUNT ON THE PURCHASE OF A NEW DARI-KOOL BULK MILK TANK.

WE NEED YOUR USED BULK MILK TANK

SPECTACULAR OFFER

WE ARE OFFERING AN

**EXTRA**

\$300 to \$800\* OFF

Offer Good For Next Few Weeks

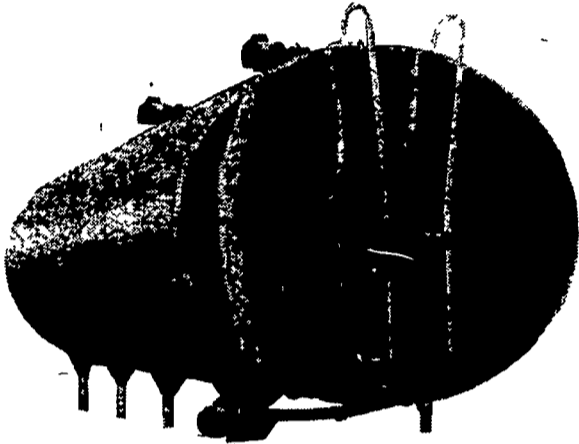
\* Discount depends on size of tank

### DARI-KOOL SYSTEMS -

A new, more efficient FULL-FLOW Refrigeration System

#### DARI-KOOL Coolers

- Heavy-Duty Agitators
  - Efficient Polyurethane Insulation
  - Internal Structural Steel Support Frames
  - Completely Stainless Steel Exterior
  - Sizes from 450 to 6000 Gallons\*
  - Ladder Equipped On 1250 Sizes And Larger
  - High Efficiency Twin-Evaporator Plate Design
  - All New FULL-FLOW Refrigeration System — Reduces head pressure and allows cooler, more efficient compressor operation
- Tanks can be Bulkheaded.



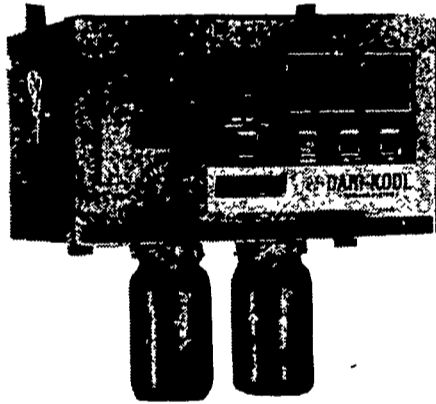
The Only Tank that has a built-in washer system. No cord or hoses laying on the floor.

## Choose From 2 control Units... With Tomorrow's Features Today.

The first cooler control system to use computer technology to monitor, record, display, and control cooler functions.

#### TEMP-MATIC Solid-State Recorder/Controller

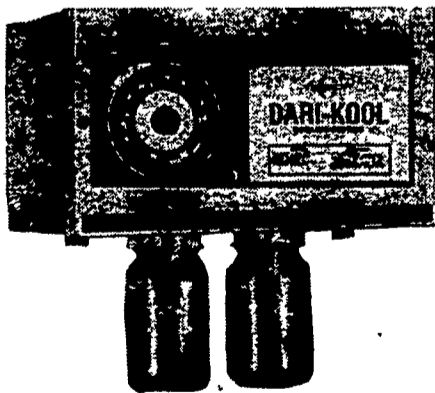
- Built-in Temperature Recorder
- Digital Temperature Display
- Built-in Washing System Components
- Dependable Solid-State Six-Cycle Washing With Digital Mode Display
- Touch-Button Cooler/Washer Control With Manual Override Feature
- Remote Alert For Temperature And Power Loss Warning
- Accurate Solid-State Temperature And Agitator Control



#### NEW DECO-MATIC III Electro Mechanical washer/controller for economy and simplicity

##### FEATURES

- Stainless steel shield covering on manifold assembly
- Large roomy cabinet allows plenty of room for connectors and wires
- Color coded wire harness for easy circuit tracing
- One time and one motor to control all wash cycles and timer motor and individual cam switches are replaceable without removing timer from control
- Thermostat by-pass switch for preliminary checkouts (without using thermostat) and for backup switch
- POWER SUPPLY — 230 VAC input with all internal coils, contactors, lamp and timer motor rated at 230 V



### WE HAVE GOOD USED TANKS

• PLANNING LAYOUTS • SALES • INSTALLATION • SERVICE

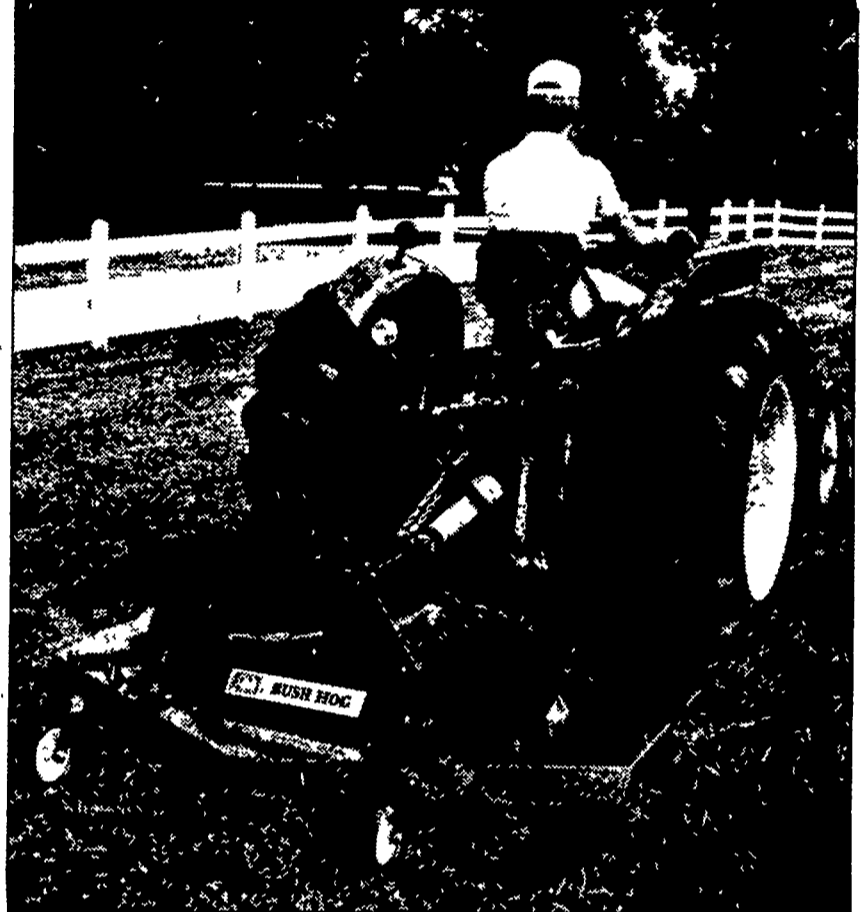
## SHENK'S FARM SERVICE

501 E. Woods Drive Lititz, Pa. 17543 Phone 717-626-1151  
Our Service Trucks Are Radio Dispatched 24 HR. SERVICE OFFERED

After 6 P.M. - Call:

Ray Shenk - 717-626-1152 Vic Leninger - 717-653-1378  
Mervin Nissley - 717-872-4565 Gary Walton - 215-593-6966  
Rick Thompson - 717-627-1530

# The Bush Hog<sup>®</sup> TM Cutters CLEAN CUT. GOOD LOOKS.



The blades on the Bush Hog<sup>®</sup> TM series cutters whirl at over 181 mph — almost 20% faster than competitive models! And the faster the blade, the cleaner the cut. The TM cutters were designed to float over large grassy areas, hugging contours, avoiding scalping. An exclusive Kevlar Cord<sup>®</sup> single in-line drive belt has twice the load carrying capacity of a nylon or fiberglass belt, resists twisting, stretching and slipping, and never needs adjustment.

The low deck profile and two-tone styling add to the sleek appearance of the TM series. Models TM 4, 5 and 6 cut paths of 4, 5 and 6 feet and fit tractors of 12 to 40 hp.

Come in soon and get a close-up look at Bush Hog quality.

### SEE YOUR LOCAL BUSH HOG DEALER

**BENCE'S FARM EQUIPMENT**  
RD 2  
Bedford, PA 15522  
814-623-8601

**PETERMAN FARM EQUIPMENT, INC.**  
225 York Rd  
Carlisle, PA 17013  
717-249-5338

**UMBERGERS MILL**  
RD 4 Box 132  
Lebanon, PA 17042  
717-867-5161

**CLAPPER FARM EQUIPMENT**  
RD 1  
Alexandria, PA 16611  
814-669-4465

**GEORGE N. GROSS, INC.**  
5261 Davidsburg Rd  
Dover, PA 17315  
717-292-1673

**FARMERSVILLE EQUIPMENT, INC.**  
RD 4  
Ephrata, PA 17522  
717-354-4271

**IVAN J. ZOOK**  
Belleville, PA 17004  
717-935-2948

**MILLER SALES & SERVICE INC.**  
Stewartstown, PA 17363  
717-993-2470

**A. L. HERR & BROS.**  
312 Park Ave  
Quarryville, PA 17566  
717-786-3521

**THOMAS L. DUNLAP**  
RD 1 Box 105  
Jersey Shore, PA 17740  
717-398-1391

**CHAPMAN EQUIPMENT CENTER**  
RD 2  
Wescosville, PA 18106  
215-398-2553

**STOLTZFUS FARM SERVICE**  
Cochranville, PA 19330  
215-593-2407

**TAM SERVICES**  
RD 4  
Gettysburg, PA 17325  
717-334-3710

**NEUHAUS'ES INC.**  
RD 2  
York, PA 17403  
717-428-1954