

Sale Reports

A Public Sale of real estate and farm machinery was held April 17 by Ervin Bortner, south of Spring Grove, York Co., Pa. There was a good turnout.

The 41 acres was sold for \$99,000 and included a large farm house, barn, 2 car garage, steel smoke house, stone spring house and corn crib.

Other items sold were: J.D. A Tractor \$600, 1955 Willys Jeep Pick-up w/Snow Plow and Dump Bed \$2675 and 5 leg Oak Table \$440.

Blaine N Rentzel was the auctioneer

xxx

A Public Auction of Holstein cows and farm machinery was held April 16 by Robin N and Miriam J. Ginder at Schaefferstown, Pa.

The 40 mature cows had 9 head that sold for over \$1500. The top cow sold for \$1900 and the 2nd high brought \$1800. The average of the cows, heifers and calves was \$1019.

Other prices were: J.D. Disc \$2200, 3 pt. Scraper \$370, Cultmulcher \$575, J.D. Blower \$400, 220 amp. Welder \$115 and 90 ton of Corn Silage \$39 per ton.

Sale conducted by Randal V. Kline & Lloyd Kreider.

xxx

A Public Sale of personal property was held April 18 by Lee & Betty Moyer, between Reading and Kutztown, Berks Co., Pa.

Some prices received were: Rockwell Planer & Jointer \$390, 1 section Harrow \$95, Potato Digger \$270, Atlas Rototiller \$200, Shenandoah Wood Stove

\$120, Iron Kettles \$80 each, Snow Blade \$65, Dump Trailer \$135, Pile of 2" Oak Lumber \$75, 100 Board Feet Birch Lumber \$220, Waterfall Bedroom Suite \$155, Modern Cherry Corner Cupboard \$260, Gun Cabinet \$120.

Kenneth P Leiby was the auctioneer.

A Public Sale of farm machinery was held April 17 by Mr. & Mrs. M. Frank Peterson, north of Hagerstown, Md. The attendance at the sale was good.

The 30 acre farmette with a log and frame dwelling, 2-car garage, silo and swimming pool plus bank barn, hog pen, and chicken house was sold for \$89,000.

Other prices received were: Int. 230 Tractor \$1500, Int. 340 Tractor

\$2100, N.I. 213 Manure Spreader \$2000, J.D. 24T Baler \$700, N.I. Rake \$875, Bale Wagons \$600 each and Sheep \$80 each.

xxx

A Public Auction of farm equipment was held April 18 by Mr. & Mrs. Edwin E. Bufington, 1 mile south of

Berrysburg, along Route 225, in Dauphin Co., Pa.

Some prices received were: Ford Golden Jubilee Tractor \$2000, Ford 8N Tractor \$1575, Alternator \$430, N.H. 66 Baler w/motor \$510, N.I. 206 Manure Spreader \$200, 3 pt. Disc \$255, 2-Bottom Plow 3

pt. \$315 and 3 Section Harrow \$215.

Auctioneers were George & Mike Deibert.

xxx

A Public Sale of farm machinery was held April 13 by Clara Fox, R.D. 2, Shuppensburg, Pa.

Some prices were: Int. 656 Tractor \$4550,

Int. 350 D Tractor & Loader \$1250, Int. 460 D Tractor \$1550, Farmall M Tractor \$775, Int. Self-Prop. #225 Haybine \$1085, A.C. No-Till 4-row Corn Planter \$2250, Gravity Bin Wagon \$425 and Graham Chisel Plow \$350.

Auctioneer was Blaine N. Rentzel.

PUBLIC SALE SATURDAY, MAY 2

10:00 A.M.

Located in Huntingdon County Centre Union on Route 26, North out of Huntingdon near standing stone golf course, watch for sale signs.

TRAIN COLLECTION

25 P.R.R. Railroad Lantern, Old Train sets, some antique, P.R.R. Baggage Cart, 2 old R.R. carts, Railroad signs, old R.R. patch, old R.R. Guide Books, old Train books, Train picture, R.R. Torch's Brass, Antique toy fire truck in good shape.

HOUSEHOLD GOODS

9 pc. Mahogany dining room set, Breakfast set, Lester Piano, T.V. Desk and chair, folding table, 3 pc. living room suite, coffee table, end tables, floor lamps, foot stool, mirrors, antique baby picture, 6 chairs, sewing machines, Rollaway bed, 6 pc. Maple Bedroom suite, 5 pc. Maple bedroom suite, Double bed, Linen, Zenith Record player, 30 year old, Records old, old trunk, old chest, old Christmas decorations, Maytag wringer washer, Whirlpool Dryer, cuckoo clock, lawn and garden tools, 8 pc. Fostoria set with assorted milk glass set of dishes, Cut glass dishes, old antique candle holders, crystal pitcher and glass set. Old Jewelry, pots, pans, silverware.

REAL ESTATE

OFFERED AT 2:00 - A Cape Cod setting on one acre of ground. With a double garage, 2 baths and 4 bedrooms, kitchen and dining room, large living room, oil and wood combination furnaces. It's in real good shape.

This is a good clean sale. Everything's in good shape.

NOT RESPONSIBLE FOR ACCIDENTS.

Owner:

MRS. JACK LEFFARD

AUCTIONEER: Harold R. Carper, R.D. 2, Spring Mills, PA (814) 349-8214

LUNCH

RAIN DATE - MAY 9th.

AYRSHIRE DISPERSAL SATURDAY, MAY 9, 1981

1:00 P.M.

Located 7 miles Northwest of Selingsgrove on Route 204 between Kratzville and New Berlin, Snyder co. Watch for signs.

23 Cows - 2 Bred heifers. TB & Blood tested - 30 days. Mostly sired by and bred to Sire Power Ayrshire Sires.

15 dau. of Oak Ridge Commander Star USDA 583 dau. avg. 11,854M 3.9% 463F P.D. +700M +20F +\$74.184 cl. dau. avg. 85.8.

5 recently fresh 2 due May, 6 Aug., 3 Sept., 4 Nov.

Sale by

ROY W. KLINE

R#1 Box 160, Winfield, Pa. 17889

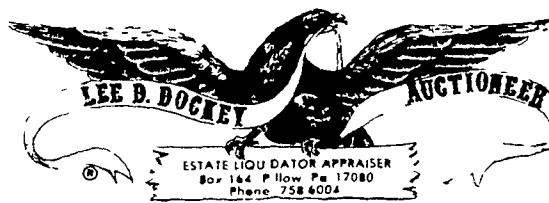
Ph. 717-374-8882

Managed by Milt Brubaker

595 Snyder Hill Rd

Lititz, Pa. 17543

Ph. 717-626-5788



SATURDAY, MAY 9, 1981

9:00 A.M.

Located 1 mile East of Mandata, Pennsylvania, 1/2 mile North of Route 225, 5 Miles South of Herndon. Watch for sale signs along Route 225 day of sale.

REAL ESTATE

23 ACRES, more or less, situated in Jackson Township, Northumberland County. Having thereon a 10' x 52' mobile home, heated by a hot water oil furnace and assorted out-buildings. For additional information on real estate, phone 717-758-3706 or 717-758-6142. Real Estate to be offered at 1:00 P.M.

200 SHARES OF

SEABOARD INDUSTRIES LIMITED

STEAM ENGINES

Payne Upright Automatic Steam Engine, App. 4 h.p. with Boiler; 2-Cylinder Steam Engine with Steam Turbine-Electric Generator; Troy Steam Engine 170 RPM 12" Bore 8" Stroke; "Detroit Electric" Steam Lubricators; Frick 150 lb. Steam Gauge; Crosby Brass Steam Gauge; Steam Oilers; Flat Pulleys; Steam Whistles; 200 lb. Skinner Steam Gauge; Steam Injectors; Steam Engine Governor; Steam Whistles; Etc.

WELL DRILLING ITEMS

Sander-Cyclone Type 42 Well Drill on International Load Star 4x4 1600 Truck; 8" Rotary Stabilizer; Plus Assortment of Other Cable Drill Tools; Etc.

TOOLS

Delta Rockwell Floor Model Drill Press; Fairbanks Power Hack Saw; Zephyr Model 30 Jig Saw; 13" South Bend Quick Change Gear Lathe; Sheldon Metal Shaper; Selson Earle Metal Lathe; Sear's Roebuck 12" Band Saw; Wall Mount Drill Press; Craftsman 10" Table Saw; Craftsman 6" Joiner with Stand; Blacksmith Forge and Anvil; Wagon Wheel Rum Roller; Miller AC Arc Welder; Skil Chain Saw; Marquette Model 22-101 Acetylene Welder and Cutter (like new condition); Smith Model 28A50-12 Air Compressor; Traveller Battery Charger; Propane Tank with Torch and Hose, Pipe and Bench Vise, Rockwell Circle and Saber Saw; Breast Drill; Assortment of Pipe Threaders, Lg. Selection of Hand Tools, Metal Machinist Tools, Taps and Dies; Etc.

MISC. ITEMS

I H Model H Tractor; F-12 International Tractor, New Idea Model 452 Bush Hog; 1967 VW Bug; 1960 Corvair; 6'x3' Dump Trailer; 12'L Van Body; Flat Bed Truck Box; Van Body; International Gasoline Power Unit;

PUBLIC SALE

Hinkle Model C Threshing Machine; VW Engine; Centrifugal High Volume Pump; Briggs & Stratton Model 58 Engine; Stanley Steam Boiler; Oil Trailer Furnace; 20' Extension Ladder; Tower with Windmill; 1-Cylinder 1 1/2 h.p. Gasoline Engine; 15-Ton Crane Hook; Cement Mixer; International Boiler; Cardinal Junior Elevator; Wood Stove; 4' Mill Stone; Lg. Locomotive Headlight; 32" Snow Blower for Int. Cub Cadet; 4' Diam. Saw Blade; 1/3 h.p. Jet Pump; Mineralogy Set; Lg. Assortment of Electric Motors, Brass Plumbing, Fittings and Valves, Galvanized Fittings and Valves, Log Chains, Tool Boxes, C-Clamps, Nuts and Bolts, Lumber, Junk Piles in Iron, Brass and Copper; Etc.

HOUSEHOLD ITEMS

Magic Chef Gas Stove; Frigidaire Refrigerator; RCA Whirlpool Automatic Washer & Dryer; 2-Pc. Living Room Suite; 5-Pc. Breakfast Set; Recliner; Rebro Boston Rocker; Metal Bed, Springs and Mattress; Single Bed, Box Springs and Mattress; Chest of Drawers; Bookcase; Bookshelf; Combination Radio-Record Player; RCA Portable TV; Hoover Swingette Vacuum Cleaner; Cedar Chest; Reader's Digest AM-FM Radio, Tape Recorder and Player; Wall Thermometer-Barometer Weather Station; WWI Bayonet; 22 Mossberg Rifle; Cast Iron Frog Door Stop; Antique Walnut Victorian Side Chair; Antique German Bible Printed in Reading, Pa. Dated 1805; Antique Seth Thomas Oak Case Wall Clock; Kerosene Lamp; Asst. of Jugs & Crocks; Service for 12 Nortake China; Wm. Rogers Silverware; 7x35 Binoculars; Rebro Gone with the Wind Parlor Lamp; Asst. of Lifetime Stainless Steel and Guardian Service Pots; Misc. Pots, Pans and Dishes; Lawn Mower; Etc.

COINS

Half Dollars, Quarters, Nickels, Dimes and Pennies. For complete list of coins contact Auctioneer.

TERMS: Real Estate - 10% Down. Further terms and conditions to be given the day of sale. Personal Property - Cash. Personal checks, accepted only from persons having an established account with Auctioneer.

WILLIAM C. BROSIUS ESTATE
Corrine J. Rothermel, Executrix
James S. Brosius, Executor

WILLIAM H. WIEST, ATTORNEY
DOCKEY & DOCKEY, AUCTIONEERS
DEPPEN, APPRENTICE

Van Blarcom's SELECT HEIFER - - DISPERSAL

LOCATION - 6 miles North of Troy, Pa., Bradford Co., 15 miles South of Elmira, N.Y. (at former James Finnerty Farm)

SATURDAY, MAY 2, 1981

At 12 O'CLOCK

61 HEAD REGISTERED AND GRADE HOLSTEIN HEIFERS SELL 61

2 REGISTERED BROWN SWISS 2



Consisting of many Summer and Fall freshening and open heifers of breeding age. All home bred with good size and type. Dtrs. from herds with RHA 15,000M plus Majority animals sired by these outstanding sires: Jordan BE Ivan EX, Rosemere Fury Ivan EX, Bun-Yard Money Maker EX, Paragon Bootmaker EX, De-Wa-See Carljo Chueftain EX, Junell Ivanhoe Chief Charlie EX, Redwood-Ramona Moonshot VG, Morrill Star BB Bicken VG, Sageser Chief Astronaut VG. Ownbrook Elevation Atom, Wolfarm Rock Candus Carl and other choice sires represented.

Actual individual dam's records 17,000 to 21,000 milk; several with 4 0 Test

100% Calvhoo Vaccinated Interstate Tested
Catalogues Pregnancy Checked

TERMS CASH OR GOOD CHECK SALE DAY (ID Requested)

WILLIAM, ROBERT, JAMES VAN BLARCOM, Owners

Lunch - All The Dairy Products You Can Eat

D. O. Rockwell & Associates, Sale Managers
Troy, Pa. Phone 717-297-3460