

# Lancaster Co. DHIA

(Continued from Page D2)

Elam P Bollinger	RH	28 0	91 2	48 3	4 1	1 99
John U Glick	RH	51 4	92 4	51 0	3 9	1 99
Daniel E Fisher	R&GrH	44 0	85 9	52 5	3 8	1 99
Aaron K Stoltzfus	RH	38 7	87 9	52 6	3 8	1 98
Tritown Farm	RH	30 0	89 8	52 2	3 8	1 98
J Robert Kindig	RH	58 0	89 6	47 9	4 1	1 98
Robert L Shelly	RH	37 3	89 1	50 1	4 0	1 98
Noah K Beiler	R&GrH	42 2	93 1	60 1	3 3	1 98
Paul D Welk	RH	66 8	83 3	49 3	4 0	1 98
Shellenberger Bros	RH	72 9	89 0	51 1	3 9	1 97
R Edwin Harnish	R&GrH	40 0	90 5	54 6	3 6	1 97
Ellis D Kreider	R&GrH	58 1	83 7	50 2	3 9	1 96
Elvin H Hess	R&GrH	80 8	94 4	49 5	4 0	1 96
Lenewood Farm	RH	67 9	87 4	50 7	3 8	1 95
P H Rohrer & Sons	GrH	78 2	89 3	49 6	3 9	1 95
Nelson W Nolt	R&GrH	60 1	89 4	51 4	3 8	1 95
Ben G Riehl Jr	R&GrH	32 0	97 1	55 8	3 5	1 95
Samuel Stoltzfus	R&GrH	39 9	90 4	53 1	3 7	1 94
Ephraim Riehl Jr	R&GrH	32 0	89 6	49 2	3 9	1 94
Steve M Stoltzfus	R&GrH	25 4	92 1	54 0	3 6	1 94
Levi S Stoltzfus	R&GrH	44 0	91 0	47 7	4 0	1 93
John M Harnish	RH	168 0	87 0	50 9	3 8	1 93
Ivan Z Martin	RH	68 3	98 0	50 8	3 8	1 93
Nathan E Stoltzfus	RH	80 8	91 5	46 8	4 1	1 93
Lester J Wiker	R&GrH	64 7	91 5	49 9	3 9	1 93
Amos W Breneman	R&GrH	106 0	92 8	53 7	3 6	1 93
Nelson R Habecker	R&GrH	69 0	88 1	50 1	3 9	1 93
Swaying Maple Farm	R&GrH	3 7 9	3 1 3	46 3	4 2	1 93
Samuel F Long	Mix	56 4	86 9	47 9	4 0	1 92
Thomas C Lapp	R&GrH	60 1	88 2	54 7	3 5	1 92
J Wilmer Eby	R&GrH	78 1	88 7	46 9	4 1	1 92
J R Metzler & Son	RH	43 0	93 0	50 6	3 8	1 92
David S Stoltzfus	R&GrH	31 7	89 0	53 2	3 6	1 92
Spring Lawn Farm	RH	133 9	89 8	51 8	3 7	1 91
Edgefield Farms	RH	106 0	86 7	47 7	4 0	1 91
Spring Belle Farm	RH	42 0	82 8	46 9	4 1	1 91
Martin H Good	RH	44 2	88 0	47 3	4 0	1 91
John L Landis	R&GrH	212 6	88 3	48 1	4 0	1 91
Titus B Stoner	RH	65 9	95 2	46 8	4 1	1 91
Jacob M Conley	R&GrH	39 4	87 1	46 8	4 1	1 91
Dal Car Farm	R&GrH	71 5	93 0	52 1	3 7	1 91
Christian E Riehl	RH	38 6	89 1	51 5	3 7	1 91
LeRoy S Weaver	R&GrH	46 6	93 2	50 4	3 8	1 91
Paul E Martin	RH	39 0	84 9	47 3	4 0	1 90
King Ridge Farm	RH	36 0	91 1	59 3	3 2	1 90
Hiram S Aungst	RH	52 0	84 4	50 6	3 7	1 89
C Witmer Sherer	RH	40 2	89 1	50 3	3 8	1 89
Ru Be Mar Farms	RH	26 1	74 6	46 8	4 0	1 89
Lenewood Farm	RH	67 9	85 3	49 5	3 8	1 89
John E Kreider	RH	45 6	93 7	49 8	3 8	1 88
Ivan S Stoltzfus	RH	44 2	93 0	48 1	3 9	1 88
Andrew G Miller	RH	70 6	94 3	51 5	3 7	1 88
Albert Breneman	R&GrH	87 3	92 6	50 2	3 7	1 88
Paul M Fahnestock	R&GrH	70 1	92 3	50 4	3 7	1 88

Red Knob Farm	GrH	145 3	92 7	49 0	3 8	1 88
Jacob L Stoltzfus	R&GrH	56 0	86 0	47 8	3 9	1 88
John S Zimmerman	R&GrH	68 6	90 5	47 9	3 9	1 88
Steve E Stoltzfus Jr	RH	34 0	94 1	52 5	3 6	1 88
Daniel Stoltzfus	R&GrH	52 9	83 8	53 3	3 5	1 88
Omar S Kauffman	R&GrH	47 8	91 7	50 2	3 7	1 88
Ben S Stoltzfus	RH	39 1	91 0	47 7	3 9	1 87
Ken & Nelson Stoner	RH	81 1	83 6	46 2	4 0	1 87
John F Petersheim	RH	40 7	88 8	50 0	3 7	1 87
Welsh-Vista Farms	RH	78 6	91 0	49 4	3 8	1 87
Harlan W Hoover	GrH	30 5	76 9	50 1	3 7	1 87
Meadow Springs Fm	R&GrH	37 7	82 5	47 5	3 9	1 87
Harry S Aungst	RH	57 2	90 1	50 2	3 7	1 86
Harry L Troop	RH	60 6	88 5	49 9	3 7	1 86
Marvin S Nolt	R&GrH	79 9	91 0	50 0	3 7	1 86
Rohrer Brothers	RH	47 1	90 4	48 5	3 8	1 86
David B King	RH	38 0	92 1	48 9	3 8	1 86
Eli H Weiler	R&GrH	46 7	90 2	51 4	3 6	1 86
J Omar Stoltzfus Jr	RH	50 8	84 2	49 1	3 8	1 86
Richard B Hess	R&GrH	41 5	94 1	56 0	3 3	1 86
Isaac L Fisher	R&GrH	33 9	96 8	49 9	3 7	1 86
John F Stoltzfus	R&GrH	32 2	88 3	52 2	3 6	1 86
Glenn R Binkley	R&GrH	46 0	89 3	47 8	3 9	1 86
Jonas S Riehl	OD	35 0	97 1	48 0	3 9	1 86
Samuel J Esh	RH	43 9	85 9	51 5	3 6	1 85
Jacob R Glick	R&GrH	26 6	88 7	51 0	3 6	1 85
Lester Wiker	R&GrH	26 6	88 7	51 0	3 6	1 85
Pequea Meadows Fm	R&GrH	74 4	85 4	47 2	3 9	1 85
Dale W Peifer	R&GrH	47 2	88 9	49 2	3 8	1 85
William J Kepley	GrH	47 5	96 9	45 5	4 1	1 85
Joseph DeLong	GrH	75 4	90 6	42 2	4 4	1 84
Ben K Stoltzfus	RH	37 8	79 6	51 2	3 6	1 84
Ben G Riehl Jr	R&GrH	32 0	94 6	52 7	3 5	1 84
Henry & Omar Fisher	GrH	57 0	96 2	52 6	3 5	1 84
Christian Becker	R&GrH	38 0	96 0	47 0	3 9	1 84
Gerald Martin	RH	48 7	80 8	47 0	3 9	1 83
Ferncrest Farm	R&GrH	48 5	92 0	41 7	4 4	1 83
James W Bowman	R&GrH	49 6	88 8	45 8	4 0	1 83
Harold G Shelly	RH	24 6	93 4	49 7	3 7	1 83
Jay L Ranck	RH	39 4	88 4	48 9	3 7	1 83
T & J Harnish	R&GrH	68 1	82 0	48 2	3 8	1 83
J Wade Groff	RH	50 7	87 8	46 0	4 0	1 82
James D Shertzler	RH	43 0	92 8	44 9	4 1	1 82
H Landis Weaver	RH	58 0	86 5	47 6	3 8	1 82
Raymond M Weaver	RH	99 9	87 6	47 6	3 8	1 82
David R Stoltzfus	GrH	31 0	93 0	49 1	3 7	1 82
Marvin Reed	R&GrH	32 5	87 8	49 2	3 7	1 82
Wilmer G Kraybill	RH	57 8	90 3	46 5	3 9	1 81
Albert Mellinger	R&GrH	174 7	93 3	49 9	3 6	1 81
Kenneth B Garger	RG	66 2	87 0	37 3	4 9	1 81
Joseph W Best	GrH	104 9	89 6	44 7	4 0	1 81
David L Landis	R&GrH	78 5	83 1	45 8	4 0	1 81
Long Acres Farm	R&GrH	78 0	85 2	47 0	3 9	1 81
Norman B Rutt-Son	R&GrH	46 1	90 4	49 2	3 7	1 81
Parke H Ranck	RH	60 1	81 8	46 2	3 9	1 80
J M Stoltzfoos	R&GrH	50 6	90 1	46 2	3 9	1 80
J Kreider & Son	R&GrH	152 4	90 5	48 8	3 7	1 80
James M Harnish	RH	52 0	88 1	48 1	3 7	1 80
Riehlee Farm	RH	31 0	88 3	47 4	3 8	1 80
Sol S Stoltzfus	GrH	31 5	86 8	49 5	3 6	1 80

Melvin R Eby	RH	51 8	90 8	49 6	3 6	1 79
Elam K. Stoltzfus	R&GrH	32 6	85 0	48 8	3 7	1 79
Daniel J Martin	RH	21 1	92 9	44 5	4 0	1 79
Robert & Joyce Wagner	RG	64 8	97 3	33 7	5 3	1 79
Robert L Gruber	R&GrH	104 0	93 5	48 1	3 7	1 79
Samuel B Lapp	RH	31 4	82 9	48 8	3 7	1 79
Tom Zartman	R&GrH	133 0	93 5	43 6	4 1	1 79
Harold L Weiler	R&GrH	59 7	91 6	46 7	3 8	1 79
Donald B Miller	R&GrH	38 2	90 1	47 5	3 8	1 79
Clifford G Martin	GrH	41 4	89 7	47 5	3 8	1 79
David McMichael	R&GrH	80 3	75 3	45 5	3 9	1 79

## DHIA to accept bulk tank samples

LANCASTER — Effective May 1, 1981, the Pennsylvania DHIA will accept for component testing one bulk tank milk sample per herd.

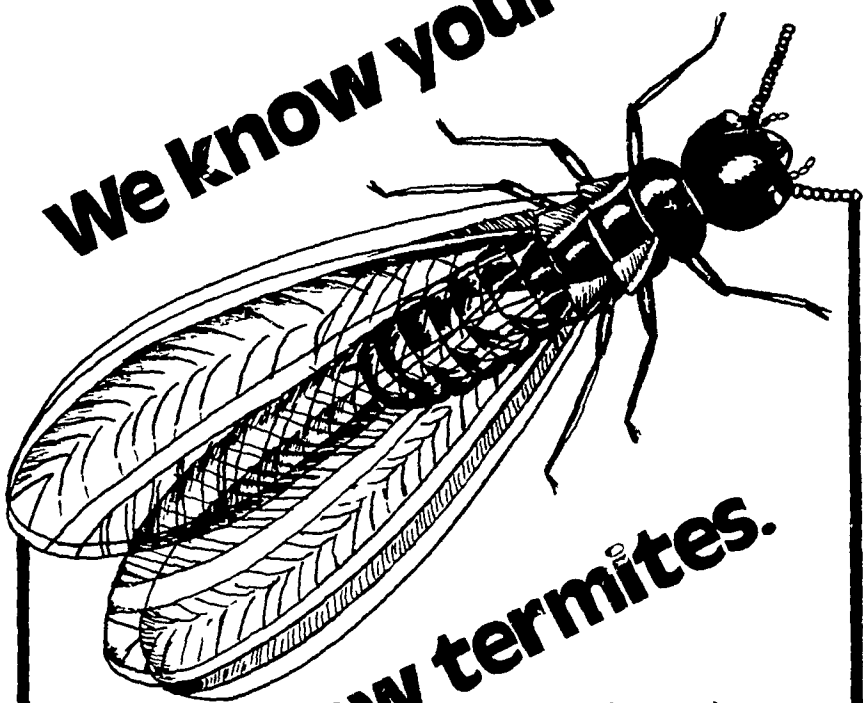
The sample must be in one of the regular plastic bags used for individual cow sampling and it must be packaged with the individual cow samples for that herd.

The sample bag containing the tank sample must be labeled tank. A self-addressed postal card or envelope for reporting the results of the test or tests must be included. The tank sample will be tested for the same components as the individual cow samples for the herd.

The charge will be \$2 for milkfat and/or protein testing. There will be an additional charge of \$2 for the somatic cell test.

These charges which are subject to review annually should be included as part of regular monthly testing fees and be collected by DHIA supervisor, which is in turn reported to the treasurers.

**We know your enemy.**



**We know termites.**

The first step in overcoming a problem is to fully understand that problem. Ehrlich understands the biology of termites. For instance, Ehrlich knows that termites need to replenish their moisture supply to survive. This gives us a key to combating them. Ehrlich is constantly updating their knowledge of termites and how to treat them. Plus we have over half a century of experience. You should know that we know what we have to know to provide dependable termite control for your valuable home. Call us

**717-397-3721**

**1278 Loop Road  
Lancaster, PA**



*Termite control is too important to trust to anyone else*

**"When we needed a new car, Farmers First showed us how to drive a bargain."** Before we even went car shopping, we talked with our Farmers First Loan Officer. He told us how much money would be available for the kind of car we wanted. He estimated our monthly payments and helped us decide how much we could afford to borrow.

Pre-arranging our loan made us "cash" buyers. Which gave us a much better chance to drive a bargain. And the benefits of dealing with Farmers First didn't end there. Because as we pay our loan, we're building important credit with the bank. Credit that can be very useful in the future. Farmers First even took the trouble to write the loan agreement in plain English.

We chose to have Farmers First deduct our payments automatically from our checking account. So we don't have to fuss with a payment book. And each month we get a complete statement that shows all of our accounts and loans. You need a car loan? It pays to choose your financing as carefully as you choose your car. Call the people at the People Bank...

**...you don't have to be a Farmers First customer to ask about an auto loan.**



**The People Bank**

**FARMERS FIRST BANK**

Member F. D. I. C.