

Upper Susquehanna



March 1981

The Dairy Herd Improvement report for Montour, Northumberland, Snyder and Union for the month of March 1981 includes herds averaging 1.35 pounds butterfat per day

NAME	BRD	NO COWS	% COW DAYS IN MILK	LBS. MILK	LBS FAT
Montour					
PA Dept Agriculture	R&GrH	111 7	93 7	54 7	2 32
Clifford A. LeVan	RH	21 6	79 3	49 5	2 14
Carl R. Slater & Son	RH	25 3	87 7	57 5	2 08
Earl W. Harris	R&GrH	55 0	90 0	52 3	1 97
Lundy Brothers	RH	38 0	82 7	47 0	1 84
Limestone Run Farm	R&GrH	93 5	86 5	44 7	1 73
Ralph Kitchen	R&GrH	37 2	86 5	43 3	1 64
G & D Neyhard	R&GrH	22 5	88 4	37 0	1 40
George Farms, Inc	GrH	29 8	86 8	40 2	1 39
Paul E. Ross	Mix	39 0	93 2	32 5	1 39
Robert R. Beyer	R&GrH	36 5	81 5	36 0	1 38
Hostetler Brothers	R&GrH	37 3	82 6	33 4	1 38
Eli J. Hostetler	R&GrH	52 5	84 1	34 0	1 35
Northumberland					
F & T Strouse	R&GrH	60 2	88 7	57 2	2 43
Ernest L. Wolfe	RH	64 9	93 2	55 4	2 15
R. Truckenmiller	R&GrH	54 0	92 9	57 0	2 10
Irvin Reynolds	R&GrH	65 9	90 4	51 0	2 07
J. Bomberger & Sons	R&GrH	133 8	88 4	54 4	2 05
P. Buckwalter & Sons	RH	92 4	87 6	50 9	1 97
Jerry Smith	RH	47 4	92 4	53 4	1 87
Ernest Klinger	GrH	99 6	91 1	43 6	1 83
Donald E. Bieber	R&GrH	54 5	91 6	45 2	1 83
Leon Epler Fms Inc	R&GrH	150 7	93 6	38 9	1 67
Lloyd B. Zimmerman	R&GrH	87 5	79 9	49 2	1 60
Ronald F. Wallace	R&GrH	83 9	92 3	39 9	1 57
Robert N. Bechtel	R&GrH	30 2	86 8	40 7	1 56
William R. Landis	R&GrH	30 0	85 5	41 0	1 55
Shoch Manor Farms	R&GrH	107 1	75 7	38 1	1 51
Frank S. Prutzman	R&GrH	65 5	88 2	36 6	1 50
C. Wayne Lapp	Mix	43 0	85 7	36 0	1 49
E. D. Schnure Jr	R&GrH	50 7	85 8	37 2	1 47
Garvin Schaffer	R&GrH	30 0	84 4	41 4	1 47
David B. Heffner	R&GrH	41 6	73 2	38 6	1 45
O. J. Baumert Jr	R&GrH	93 9	85 0	36 4	1 43
H. Klock & Son	R&GrH	46 0	73 3	32 8	1 36
Snyder					
R. Ulmer & Sons	R&GrH	57 1	88 8	59 2	2 26
Glenn M. Moyer	R&GrH	42 6	92 9	57 4	2 25
E & D Apple	R&GrH	59 1	95 5	56 7	2 19
Urie & Dan Yoder	RH	55 0	96 7	54 2	2 10
Harold S. Hassinger	RH	40 1	87 6	51 8	2 09
George Krebs	R&GrH	39 9	94 4	51 7	2 06
B & D Parthemer	R&GrH	76 6	92 5	52 9	2 06

Adams Co. DHIA

(Continued from Page C25)

Rhodes Enterprises	3	7 2	305	19 011	3 4	642	
20							
36		8 5	305	20 220	3 2	637	
Ber Crk							
Rosie	3	6 7	305	17 488	3 7	644	
Melita	3	2 6	305	16 465	3 8	618	
Grn Manor Guernseys							
Josie	2	7 0	305	14 651	4 9	723	
Bea	2	4 10	305	17 685	4 6	808	
Golden	2	2 2	301	12 259	5 6	688	
Richard K. Herr							
Darlene	3	5 7	305	23 707	3 4	809	
10		4 5	305	21 897	2 9	631	
82		3	2 6	305	21 530	3 1	664

Marbarb Farms	RH	72 7	96 1	53 8	2 04
Sauderdale Farm	R&GrH	43 5	89 2	51 5	2 04
Jesse J. Yoder	R&GrH	49 6	91 5	52 5	2 04
G & B Carper	R&GrH	57 3	89 3	49 5	2 03
I & M Wenger	R&GrH	51 0	90 1	46 2	2 00
Narehood & Sons	R&GrH	59 0	87 5	46 6	1 91
Richard G. Nerhood	R&GrH	41 0	88 6	46 6	1 90
Rich Lucille Wenrick	GrH	32 1	89 0	49 6	1 90
St Fm Selinsgrove	R&GrH	89 0	87 3	48 9	1 87
Leire Fry & Sons	R&GrH	127 3	90 5	47 1	1 82
St Fm Selinsgrove	R&GrH	82 8	85 2	50 4	1 81
J & G Blank	R&GrH	42 8	81 5	44 2	1 80
C C Fisher & Son	R&GrH	71 9	92 5	44 6	1 79
J & M Shirey	RH	56 4	88 3	46 0	1 79
Randolph Hoffman	R&GrH	28 3	83 6	48 5	1 79
Richard E. Weller	R&GrH	41 6	96 5	41 8	1 77
J & G Blank	R&GrH	43 2	82 9	43 6	1 76
Richard F. Shirey	RH	38 0	80 7	44 3	1 75
Ronald B. Reich	R&GrH	63 6	93 5	40 7	1 72
Richard F. Shirey	RH	40 0	80 4	41 8	1 66
Nevin C. Hoover	GrH	44 0	88 4	48 9	1 66
Clyde K. Alderfer	R&GrH	54 4	87 1	37 7	1 60
Albert W. Heimbach	GrH	126 4	83 6	41 2	1 59
Albert M. Berg Jr	R&GrH	44 8	90 4	40 6	1 54
R & C Waite	R&GrH	40 0	88 0	38 1	1 51
James Hunsberger	R&GrH	44 0	87 2	37 5	1 50
Samuel U. Beiler	GrH	34 8	83 4	36 3	1 48
Three Ayr Farm	Mix	35 0	76 1	37 0	1 47
Glenn & Ethel Stuck	RH	28 0	81 1	36 1	1 43
Don & Grace Tinc	R&GrH	53 5	83 8	34 1	1 38
Sid & Susan Hoffman	GrH	46 1	80 0	33 5	1 38
Mike & Mary Hauck	R&GrH	46 0	87 2	33 7	1 38
Clayton R. Graybill	RH	50 8	77 8	33 8	1 35
Union					
Wood Ann Farm Inc	R&GrH	27 0	95 6	62 9	2 47
Alvin H. Martin	GrH	47 2	90 8	57 0	2 22
San Be Farms	RH	66 7	89 0	53 5	2 06
R. Dietrich & Son	R&GrH	23 3	97 1	49 9	2 03
Leroy S. Zimmerman	GrH	46 4	91 7	58 2	2 01
Mark M. Wehr	R&GrH	80 8	92 6	50 6	1 99
John F. Stoltzfus	R&GrH	41 0	92 9	53 6	1 97
Jonas R. Zeiset	R&GrH	38 2	89 8	50 0	1 97
Joal Ann Farms	RH	75 4	89 4	54 0	1 93
Roland Hackman & Son	RH	50 6	90 3	59 7	1 93
Lewis & John Kenamond	RH	48 0	89 4	49 2	1 86
Clarence W. Beiler	RH	59 0	82 3	44 7	1 85
David W. Foresman	R&GrH	35 0	79 1	47 3	1 85
John M. Stoltzfus	R&GrH	34 0	87 8	47 4	1 82
Dock View Dairy	GrH	106 3	85 6	45 8	1 81
Elam Beiler	RH	34 9	88 1	42 2	1 81
Aaron R. Zimmerman	R&GrH	38 0	88 4	50 2	1 81
Donald B. Spangler	R&GrH	52 0	96 0	46 0	1 79
Kore M. Yoder	R&GrH	36 3	87 4	44 6	1 79
Eugene Spangler	R&GrH	74 6	89 5	41 4	1 76
Amos J. Zook	R&GrH	53 2	89 1	46 3	1 76
Kenneth T. Shuck	R&GrH	48 9	86 4	45 2	1 74
Leon M. Musser	RH	57 1	82 1	42 6	1 70
Roger M. Shively	R&GrH	24 0	85 4	41 5	1 70
Allen Reichley	Mix	40 0	85 5	32 1	1 67
Jon H. Ocker	R&GrH	42 7	91 7	47 1	1 67
Elwood Keefer	R&GrH	36 9	86 4	39 4	1 66
Chris S. Stoltzfus	RH	46 4	88 7	44 4	1 65
Wilmer E. Zook	R&GrH	39 5	84 7	50 4	1 65
Joseph E. Snyder	R&GrH	56 8	87 8	40 0	1 64
Ben Martin	R&GrH	33 7	83 8	43 6	1 64
Zi Wes Dairy Farm	RH	49 0	93 2	40 0	1 63
Paul R. Smith	R&GrH	38 2	67 4	44 5	1 61
Dietrich Brothers	R&GrH	52 2	94 5	45 1	1 58
William D. Pontius	GrH	36 0	86 8	42 1	1 56
J. K. & D. A. Dietrich	RH	72 0	84 3	39 5	1 55
Paul Longenecker	RMix	36 8	91 6	32 2	1 54
Maple Lane Farm	GrH	32 3	78 1	41 0	1 53
Hemlock Meadow Fm	R&GrH	51 0	81 1	40 9	1 51

(Turn to Page C27)

Chester County holds sheep course

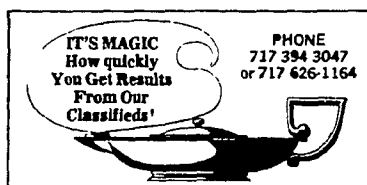
ATGLEN — Breezeview Farm, owned by Bill and Joan MacCauley of Atglen, was the site of the first annual Basic Sheep Management Meeting sponsored by the Chester County Extension Service and Penn State University.

Approximately 18 producers from throughout the county saw actual demonstrations of shearing, docking, castrating and hoof trimming, feeding programs, and internal and external parasite control.

Demonstrations and talks were given by Bill and Joan MacCauley of Breezeview Farms, and David Lytle, Agway representative and Hampshire breeder from Strawberry Hill Hampshires.

A pre-lambing meeting will hopefully be scheduled this fall giving basic information on lambing practices.

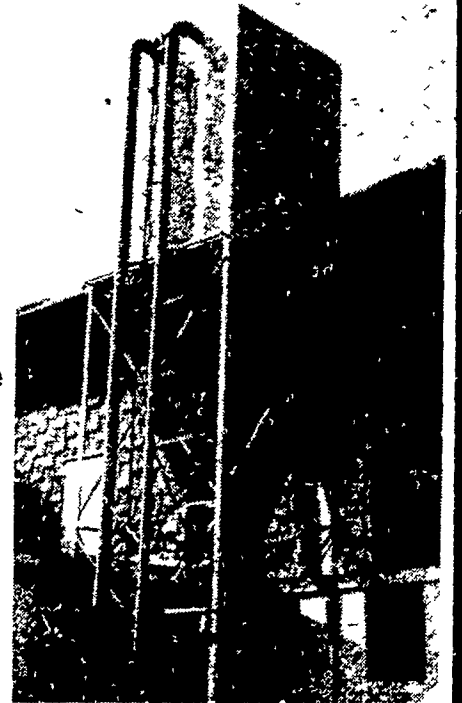
For further information on sheep and other agricultural programs, contact Cheryl Moran at 215/696-3500.



CUSTOM BUILT FEED BINS

FEATURING:

- High quality 14 gauge steel
- Solid Welded Seams Making it Water and Rodent Proof
- Long Taper and Large Opening for Easier Flow
- Can be installed inside or outside building



Most Installations Can Be Made Without Auger!
WILL DELIVER AND INSTALL ANYWHERE

MEL'S WELDING SERVICE

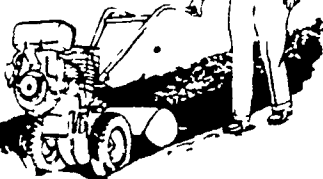
R 1 Kennedyville, Md. 301-348-2179

If no answer 301-348-5028

Sales and Service - Grain Equipment, Bucket Elevators, Distributors, Pipes and Accessories.

Yes, we have the famous **TROY-BILT ROTO TILLER**

JUST ONE HAND!



TILLERS IN STOCK FOR DELIVERY

- Trade-ins welcome
- Financing Arranged
- Factory Authorized Sales & Service

Hollinger's

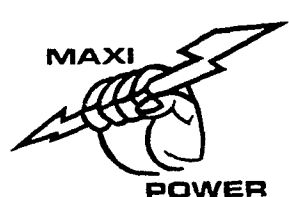
FARM MARKET, INC.

1755 W. Main St., Ephrata, PA 17522
Located on Route 322
Phone (717) 738-1131

Progress is important, but a new tractor does not make your **MAXI-POWER PTO generator** obsolete because of a different speed of a PTO shaft. All **MAXI-POWER PTO's** have interchangeable gearboxes. Gearboxes are carried in stock and can be installed in minutes by our servicemen, and at a very low price.

Call us today for a generator to keep pace with your farm's growth. Whether PTO speed is 540 or 1000, **MAXI-POWER** is the only generator for you.

MAXI-POWER . . . a customer service oriented company.



MAXI-POWER GENERATOR SYSTEMS

330 Fonderwhite Road, Lebanon, PA 17042

PH: 717-274-1483

Division of Leonard Martin Company

