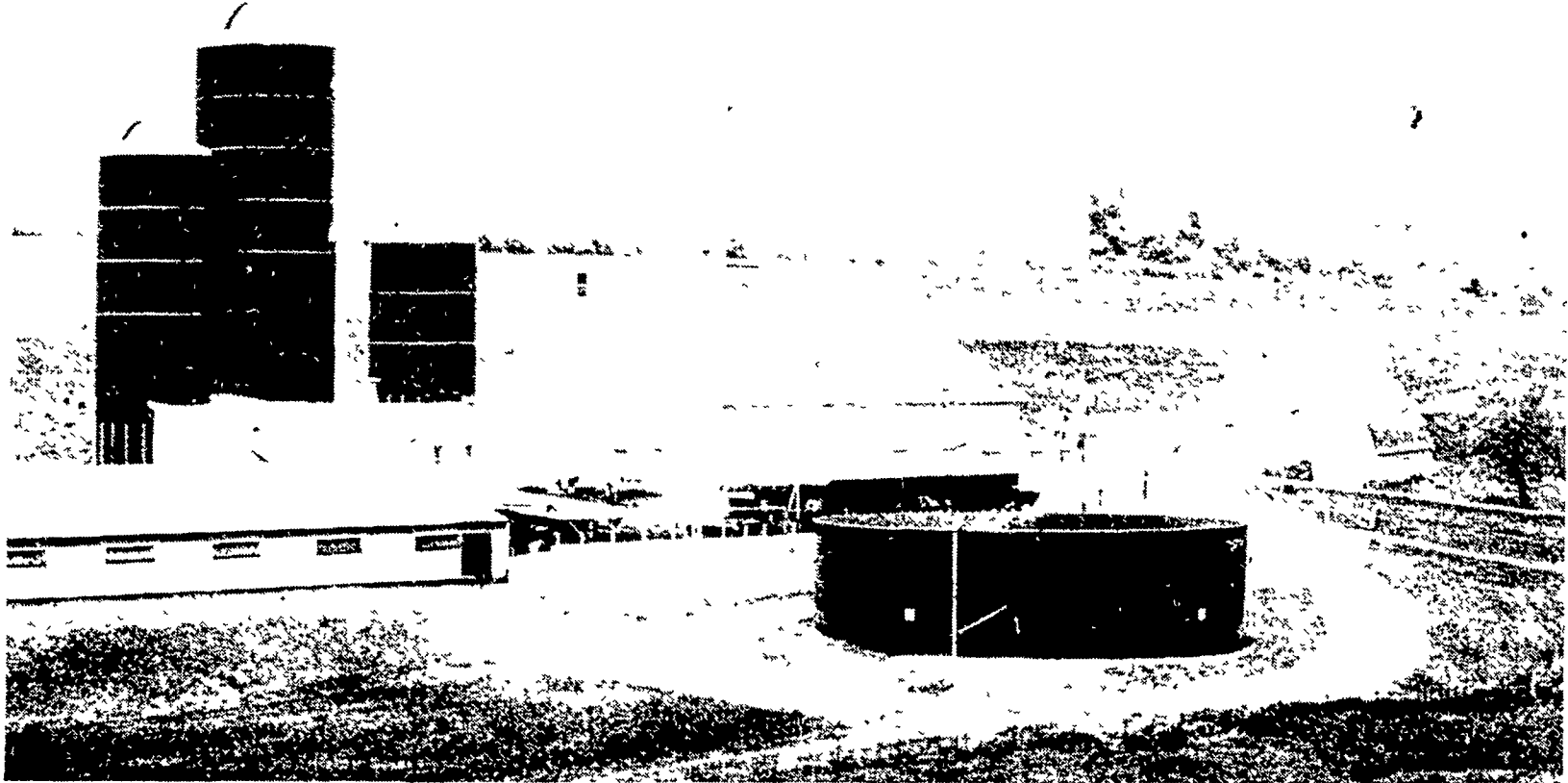


# ANIMAL WASTES — — PROBLEM OR OPPORTUNITY?

The introduction of the SLURRYSTORE<sup>®</sup> System to North America in 1974 brought an attractive solution. Originally developed in Europe as an answer to strict anti-pollution regulations, the SLURRYSTORE system offers the farmer the best of both worlds — a way to significantly reduce labor while preserving in his own "fertilizer warehouse" most of the plant nutrients contained in manure...protecting the environment...and maintaining an attractive farmstead. An above-ground glass-fused-to-steel tank provides positive containment of liquid manure until optimum times to spread, such as just prior to planting row crops or top dressing after a cutting of forage. The system also features a variety of pumps, allowing automation of daily manure handling. At last the livestock farmer could manage his manure instead of remaining its slave.



SLURRYSTORE above ground storage structures are available in 15 different sizes, ranging from 25 to 101 ft. in diameter and up to 23 ft. tall. Capacities range from 52,000 to more than 1,300,000 gals. Each structure is built of strong, glass-fused-to-steel sheets similar to those used in HARVESTORE structures. Most vertical seams are double bolted for extra strength.

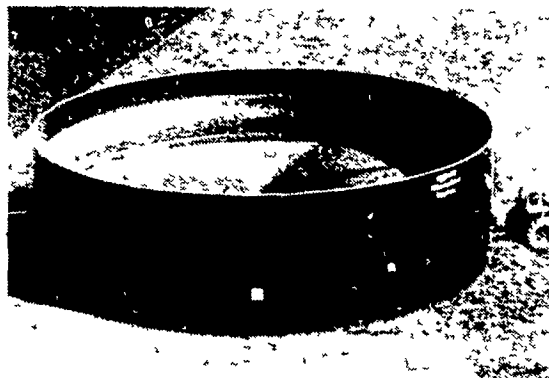


**SKILLED CONSTRUCTION CREWS BOLT SHEETS TOGETHER USING SPECIAL SEALERS TO INSURE AN AIR TIGHT BOND.**

## FEATURES

- ★ Glass-fused-to-steel sheets
- ★ Adapts easily to all types of pumping systems:
 

Piston Ram Pump	PTO Pit Pump
Electric Transfer Pump	Submersible Pump
- ★ Center agitation + over-top agitation + through-the-wall agitation
- ★ Cathodic protection system
- ★ Structure resale value



Like having a "fertilizer factory" on your farm

**NEW ANODE PROTECTION SYSTEM RESISTS CORROSION!**

**BUILT WITH CARE FOR YEARS OF SERVICE!**



An answer to the manure handling dilemma

**A TOTAL MANURE HANDLING SYSTEM... THE SLURRYSTORE SYSTEM**

**Penn-Jersey HARVESTORE<sup>®</sup> Systems, Inc.**

P.O. BOX 7

NEW HOLLAND, PA 17557

PH: 717-354-4051

THERE'S ONE BEST TIME.

NOW.

