

Letters To The Editor

(Continued from Page A12)

Only if one party sold lumber and the other did not, would it be worth

Penns Valley

(Continued from Page A18)

Dillard, Charlene Long, Carol Royer, Lloyd Shawver, Brad Stitzer, Barry Styers, Blair Wertz, Ron Wilson, Steve Wolfe, Jim Zubler.

Chapter officer pins went to President Roger Poorman, Vice President Mike Dilliard, Treasurer Faye Brown, Secretary Donna Johnson, Sentinel Todd Ishler, Reporter Wade Wolfe and Chaplain Jim Zubler.

stating. I wonder, doesn't Mr. Fasnacht realize this?

And when I write the Commission confiscates land, examining these facts should convince even a skeptic.

Sometime prior to 1975 the County of Schuylkill wished to sell a parcel of land to the highest bidder. Not so, said the Commission, citing a 1910 Law. The County Court ruled the County had the right to sell the land to the highest bidder. The Commission appealed. The Commonwealth Court upheld the County Court's decision and the land was sold to a private party for \$93,000 instead of less than 1/4 that amount which the Commission had bid.

No wonder Schuylkill County is in debt several million. Perhaps they've sold or given too much land to the Commission.

One must wonder about Mr.

Fasnacht, since he does not seem to remember. However most Berks and Lancaster Countians have not forgotten the confiscation at both Middle Creek and Blue Marsh, by the Commission.

My indignation and contempt almost go beyond the bounds of control when such fabrication and distortions are presented in the statement. The Game Commissions acquisition program is predicated on a basis of a willing seller to a willing buyer. Is that so?

It is this writer's opinion these actions are less than one step away from Communism. My dictionary defines Communism as private property being abolished.

The Commission's land acquisition policies remind me of an American reporter and his Red counterpart discussing Communism. Said the American, "The way I understand Communism you

Milk production up 6%

HARRISBURG — Milk production in Pennsylvania during March 1981 totaled 748 million pounds, up six percent from a year earlier, according to the Pennsylvania Crop Reporting Service.

The number of milk cows in the commonwealth during March was 709,000 head, down 1000 head from a year ago.

Milk production per cow averaged 1055 pounds in March, up 60 pounds from a year ago.

divide everything you have with your neighbor."

"Not quite," said the Red Reporter. "You have your neighbor divide everything he has with you."

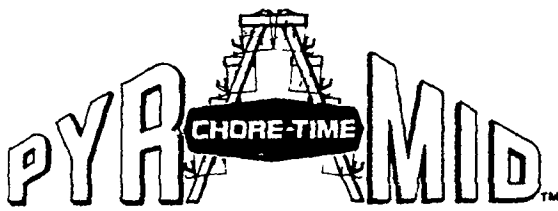
Some of the projects and policies of the Game Commission are excellent and to their credit, but their land acquisition program and their favored treatment of certain groups leave much to be desired.

John Kutz,
R1 Pine Grove

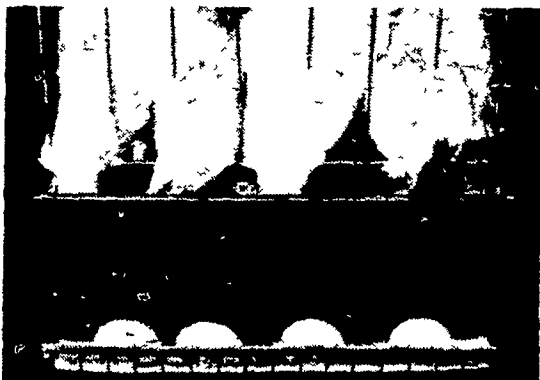
United States milk production during March totaled 11.4 billion pounds, four percent above March 1980. Milk production per cow averaged 1,052 pounds, 36 pounds more than a year earlier and 71 pounds above March 1979.

Milk cows on farms totaled 10.9 million, one percent above last year.

LEADERS IN REVERSE CAGE RESEARCH & DEVELOPMENT

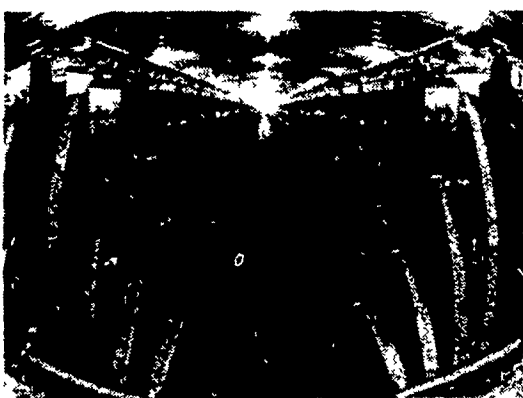


REVERSE CAGE LAYER SYSTEM



LESS BIRD STRESS

The system has been designed for bird comfort! Each bird has her place at the feed trough. Each has easy access to water. Obstruction to light and the flow of air have been greatly reduced, providing more uniform ventilation and lighting for every bird. Combined with Chore-Time's automatically controlled air inletting system, you get a layer house environment designed for bird comfort and the resulting better production.



Not only the physical shape of the feed trough, but the operation of the feeder has been engineered to reduce feed waste. The trough shape cuts down on feed loss from "raking" and "bbling," while the feeder has been specifically designed for Chore-Time's programmed and performance feeding concept.

★ LET US SHOW YOU A REVERSE CAGE SYSTEM IN OPERATION

CHORE-TIME

The Air System With A Mind Of Its Own

Until now, most ventilation systems had one drawback. Air inlets had to be opened and closed by hand.

This was time consuming — and pretty much a matter of guesswork.

Now, Chore-Time has eliminated this problem.

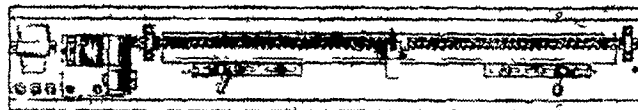
The Chore-Time system has a mind of its own and adjusts inlets — in conjunction with

fan operation — to maintain air pressure at a constant, preset level.

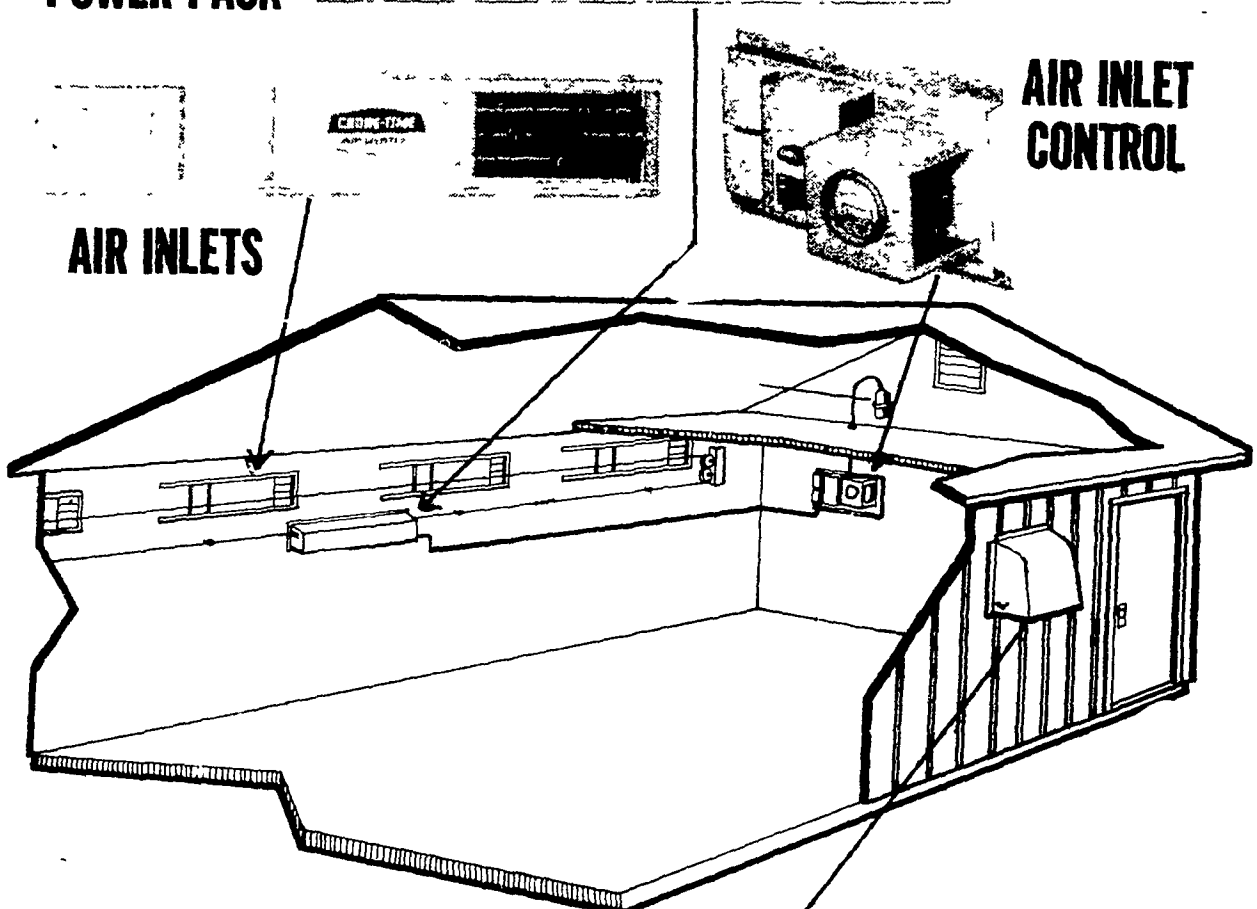
This provides a degree of air and moisture accuracy never before possible in poultry and livestock buildings.

The new inlet control (pictured) is just one of many exclusive features that make Chore-Time air systems number one in performance and reliability.

INLET POWER PACK



AIR INLETS



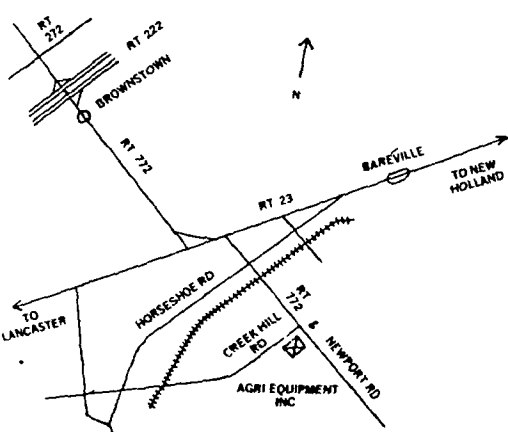
AIR INLET CONTROL

Four basic components go into the makeup of this ventilation system: the fan, the inlet, the air inlet power pack, and the controls. Coordinated, these four basic components can provide you with better conversion and performance by removing stresses due to lack of oxygen, excess humidity, noxious gases and temperature extremes.



Reliability through simplicity, Chore-Time's advanced air system provides automatic control of incoming fresh air, moisture and heat for productive environmental control in agricultural buildings.

AUTOMATIC HOOD FAN



AGRI-EQUIPMENT, INC.

CATTLE — HOG — POULTRY EQUIPMENT
2754 CREEK HILL RD., LEOLA, PA 17540
PHONE: 717-656-4151
★ SERVING PA, N.J. and N.Y.

YOUR COMPLETE CHORE-TIME EQUIP. DISTRIBUTOR

STORE HOURS:
Mon.-Fri.
7:30 to 4:30
Saturday -
7:30 to 11:30
Parts Only