

Livestock market and auction news

Special Feeder Cattle Sale

Marshall, Va.
Thursday, April 9

Report supplied by VDA

There were 1200 head sold. All cattle were graded by Representatives of the VDACS's Division of Markets, Livestock Section on USDA standards and sold by the hundredweight.

STEERS: 300-400 lbs. Small 1 85.00-88.00; 400-500 lbs. Medium 1 82.00; Large 1 79.00-83.00; Small 1 85.00-88.00; 500-600 lbs. Medium 1 74.00-81.50; Large 1 71.00-84.00; Small 1 79.00-82.00; Med. & Lg. 2 69.00-70.00; 600-700 lbs. Medium 1 76.50-83.00; Large 1 74.00-76.00; Small 1 69.00-72.00; 700-800 lbs. Medium 1 65.00-79.00; Large 1 66.50-69.00; Small 1 55.00-60.50; Med. & Lg. 2 66.00-69.00; 800-900 lbs. Medium 1 62.00-64.50; Large 1 63.50-66.00; 900-1000 lbs. Medium 1 62.00-63.00; Large 1 58.00-64.25.

HEIFERS: 300-400 lbs. Medium 1 58.00-60.00; Small 1 56.00; 400-500 lbs. Medium 1 57.00-59.00; Large 1 55.00-58.00; Small 1 53.00-62.50; Med. & Lg. 2 46.00-54.00; 500-600 lbs. Medium 1 55.00-59.00; Large 1 53.00-60.00; Small 1 50.00-56.50; 600-700 lbs. Medium 1 54.00-61.00; Large 1 58.50-67.00; Small 1 49.00-52.00; 700-800 lbs. Medium 1 52.50-55.00; Large 1 55.00-60.00.

Short heifers 300-400 lbs 38.00; 500-600 lbs. 40.00.

Shenandoah Valley Livestock

Harrisonburg, Va.
Saturday, April 11

Report supplied by auction

STOCKER, FEEDER, AND SLAUGHTER CATTLE: Good Light Steer Calves 78.00-81.00; Medium 73.00-77.75; Plain 68.00 and down; Good Heavy Steers 63.00-67.00; Medium 58.00-62.75; Plain 53.00 and down; Holstein

Steers 54.50 and down; Good Slaughter Steers Not enough to quote; Good Light Heifer Calves 54.00-58.50; Medium 49.00-53.75; Plain 48.50 and down; Good Heavy Heifers 52.00-56.50; Medium 47.00-51.75; Plain 46.50 and down; Slaughter Cows 43.00-48.75; Utilities 38.00-42.75; Canners & Cutters 37.75 and down; Milk & Stock Cows 60.00 and down; Stock Bulls 60.00 and down; Slaughter Bulls 54.75 and down

CALVES: Veal Calves 78.00 and down; Baby Calves 175.00 and down.

SHEEP & LAMBS: Spring Lambs 70.25; Choice Blue O 62.00; Good Red 61.00; Heavy Lambs 38.00 and down; Slaughter Ewes 22.00 and down; Stock Ewes 74.00 and down.

HOGS: Top 40.40; Heavy 33.00; Light 32.00; Sows 38.00 and down; Boars 27.00 and down.

G&M Livestock

Monday, April 13

Report supplied by auction

Market report cows-steady, steers-steady, hogs-weak.

STEERS: Good to Choice 60.00-62.85; Standard to Good 54.00-60.00.

HEIFERS: Good to Choice 56.00-65.00; Standard 48.00-54.00.

FEEDERSTEERS: Good to Choice 300-500 lbs. 55.00-70.00; Holsteins 50.00-57.50.

BULLS: 1000-1418 lbs. 57.00-61.00; 900-1200 lbs. 52.00-57.00.

COWS: High Choice to Prime 44.00-47.00; Couple to 48.00; Good 42.00-44.00; Utility 40.00-42.00; Cutters 38.00-40.00; Canners Down to 36.00.

CALVES: High Choice 100.00-114.00; Good to Choice 80.00-100.00; Standard to Good 60.00-80.00; Utility 40.00-60.00.

FARM CALVES: Hol. Bulls 70.00-84.00; Hol. Heifers 115.00-158.00.

FEEDER PIGS: 15-30 lbs. 12.00-18.00; 30-50 lbs. 18.00-33.00.

HOGS: 200-240 lbs. 39.50-41.60; 170-280 lbs. 36.00-39.00.

SOWS: 32.00-39.75.

BOARS: 28.00-30.00.

LAMBS: Light 100.00-185.00; Heavy 60.00-85.00.

SHEEP: 20.00-35.00.

St. Louis Cattle

Thursday, April 16

Report supplied by USDA

Receipt this week: 6,100

Week Ago: 6,811

Year Ago: 6,700

Compared to the previous week's close, slaughter steers fully 2.50-3.00, instances 3.50 higher. Slaughter heifers mostly 2.00 higher. Cows mostly steady, instances .50-1.00 lower. Bulls steady. Slaughter supply mainly Choice and Prime 2-4 1050-1200 lbs. steers, around 35% heifers and 10% cows.

SLAUGHTER STEERS: Mixed Choice and Prime 2-4 1050-1275 lbs. 63.00-64.00, closing 63.50-64.00; part load 1475 lbs. 63.00; package 3-4 1175 lbs. 62.00. Choice 2-4 950-1275 lbs. 62.00-63.50, closing 62.50-63.50; 2-3 1000-1075 lbs. 63.00-63.50 early, package 970 lbs. 64.50 late. Mixed Good and Choice 2-4 900-1200 lbs. 61.00-62.50. Good 2-3 900-1175 lbs. 59.00-61.00. Standard to mostly Good 2-3 1050-1350 lbs. holsteins 51.00-56.00.

SLAUGHTER HEIFERS: Mixed Choice and Prime 2-4 875-1075 lbs. 61.00-61.50; few lots 3-5 1040-1300 lbs. 57.50-60.50. Choice 2-4 800-1050 lbs. 60.00-61.50, mostly 60.00-61.25. Mixed Good and Choice 2-3 700-1000 lbs. 58.00-60.00. Good 2-3 700-950 lbs. 56.00-58.00.

COWS: Closing week sales: Utility and Commercial 2-4 40.00-42.00. Boning Utility 1-2 42.00-44.25. Cutter 1-2 39.00-42.00. Canner and Low Cutter 1-2 36.00-39.00.

BULLS: Yield Grade 1-2 1050-1800 lbs. 50.00-55.00, closing 50.00-54.00. Yield Grade 1 1350-1700 lbs. 56.00-57.00 early. Individual 1595 lbs. 54.50 late.

FEEDERS: (Including around 2,300 at the regular Thursday auction.) Feeder steers weighing under 700 lbs. mostly steady; over 700 lbs. 1.00-3.00 higher. Feeder heifers steady to 2.00 lower. Overall quality not as attractive as a week ago and bulk of offerings carrying moderate amounts of flesh.

FEEDER STEERS: Medium Frame 1: Lot 341 lbs. 72.00; 475-600 lbs. 68.00-73.75; bulk 68.70-70.75; 600-700 lbs. 66.00-70.00; 700-800 lbs. 63.00-67.75; 850-1025 lbs. 63.00-65.25. Medium Frame 1-2 and Some Small Frame 1: 475-700 lbs. 62.00-68.50, mostly 64.00-67.00. Large Frame 2 Holsteins: Lot 990 lbs. 54.50.

FEEDER HEIFERS: Medium Frame 1: 325-500 lbs. 59.00-63.75; 500-600 lbs. 57.00-63.00, mostly 58.00-61.00; 600-700 lbs. 57.25-59.00. Medium Frame 1-2 and Some Small Frame 1: 400-600 lbs. 56.00-59.60.

STOCK COWS: Lot Small Frame 2 middle aged and aged thin 655 lbs. 37.50.

Oklahoma Cattle

Thursday, April 16

Report supplied by USDA

Estimated Receipts: 4,000

Same Day Last Week: 5,237

Actual unloads will fall over 1000 head short of early estimate. Wednesday's sale totaled 11,816 head. Moderately active, feeder steers over 550 lb. & feeder heifers over 450 lbs. firm to .50 cents higher; lighter weights both classes 1.00 higher, some heifer calves 2.00 higher; majority receipts Medium Frame No. 1 & Mixed No. 1-2 400-750 lbs. feeder steers and 400-650 lbs. Feeder heifers arriving from wheat pastures and growing pens. Moderate attendance buyers.

FEEDER STEERS: Medium Frame No. 1 few 362-393 lbs. 83.00-88.25; 400-500 lbs. 73.00-80.50; 500-600 lbs. 67.75-71.20, thin offerings

72.50-76.25 & part load 503 lbs. at 79.40; 600-700 lbs. 68.00-69.10, short load 600 lbs. 71.20; few fleshy & full 66.00-67.60; 700-800 lbs. 66.75-69.10; 800-1046 lbs. moderate to fleshy condition 64.30-66.60. Large Frame No. 1 package 902 lbs. 65.90; package very fleshy 1163 lbs. 57.50. Small Frame No. 1 few 520-733 lbs. 64.25-67.60. Medium & Large Frame No. 1-2 few 385-412 lbs. 69.25-78.00; package 569 lbs. 70.00; 600-700 lbs. 66.00-68.20; 700-885 lbs. 62.00-66.00. Large Frame No. 2 500-778 lbs. 64.00-68.00; package 943 lbs. at 55.60. Holsteins: Part load 570 lbs. 58.30; 764-942 lbs. 55.00-57.60; package 1121 lbs. 52.30.

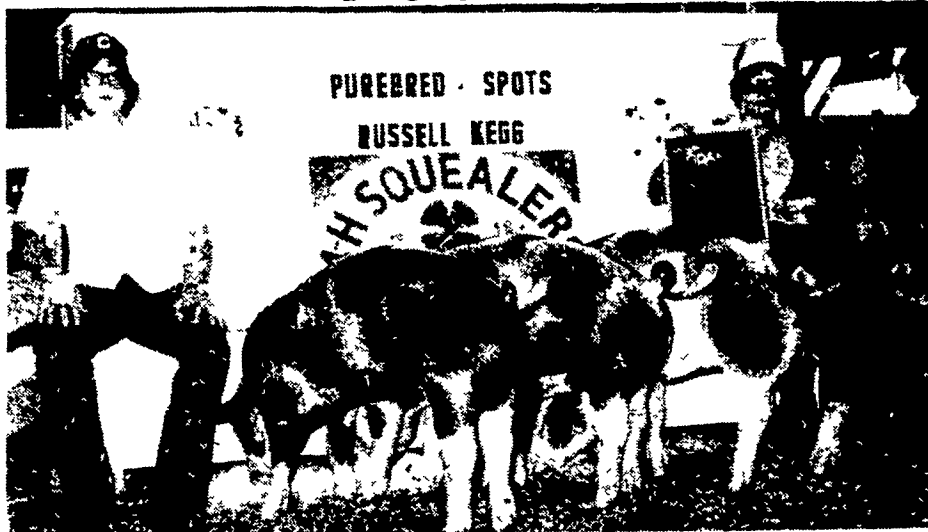
FEEDER HEIFERS: Medium Frame No. 1 300-400 lbs. 70.25-75.00; 400-500 lbs. 63.00-68.50, few thin 415-432 lbs. 72.25-73.25; 500-600 lbs. 61.50-64.25; 600-700 lbs. 61.75-64.05; package 736 lbs. 61.00 & part load fleshy 763 lbs. 58.10. Small Frame No. 1 420-582 lbs. 59.00-63.40. Medium & Large Frame No. 1-2 378-399 lbs. 63.50-64.30; 400-500 lbs. 60.00-64.50; 500-600 lbs. 60.10-62.70; few 600-743 lbs. 58.60-60.90. Medium Frame No. 2 package 382 lbs. 64.00; 480-572 lbs. 59.00-59.30.

FOR THE WEEK: Compared to late last week, feeder steers under 550 lbs. & feeder heifers under 500 lbs. 1.00-2.00 higher, some heifer calves 3.00 higher; feeder steers over 550 lbs. & feeder heifers over 500 lbs. .50 cents to 1.00 lower. Slaughter cows poorly tested late, early sales firm to .50 cents higher, instances 1.00 up; Utility and Commercial sold thru the week from 42.75-45.75, few. High-Dressing Holstein Utility cows 46.00-46.40 early; cutter cows 39.75-45.00. Slaughter bulls in relative small supply, Yield Grade 1-2 1000-1500 lbs. 50.00-57.00; 1500-1865 lbs. 54.50-61.00, salable receipts for the week totaled near 18,400 head compared to 19,841 last week. Feeder cattle & calves made up the majority or fully 94% of the total receipts.

Russell Kegg's



"CROWN OF QUALITY" PIG SALE



4 CLASS WINNERS & CHAMPION MARKET HOG 1980 BEDFORD FAIR

SATURDAY, MAY 2 - 1:00 P.M.
at the BEDFORD FAIRGROUNDS, Bedford, PA.

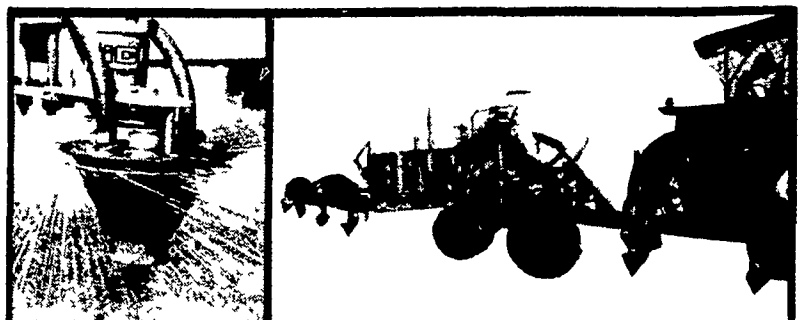
Offering:
6 PUREBRED SPOT BOARS
12 PUREBRED SPOT GILTS
90 FEEDER PIGS

KEN BRUBAKER, Auctioneer
P.O. Box 374, New Holland, PA
215/696-5483 - 717/354-4496

RUSSELL KEGG
RD1 Bedford, PA
814/623-8981

GROUND PLANE

It could cut some pesticide cost 50% or more!



Controlled droplet size offers three major advantages:

1 REDUCTION IN CHEMICAL RATES

Although additional research is required, growers in 1980, on thousands of acres throughout the USA cut dosage rates 50% or more. Savings reported by growers were as high as \$20.00 per acre.

2 REDUCED WATER REQUIREMENTS

CDA lets you cover more acres per day! Hauling water is all but eliminated. Time lost refilling is all but eliminated. The Ground Plane with one 150 gal tank can cover more than 300 acres without refilling.

3 REDUCED DRIFT

At wind speeds of 25 kph rotary atomizers produce less than half the number of drifting droplets that a fan nozzle in winds of only 5 kph produces. This means greater safety to other crops, animals, fish and humans.

GROUND PLANE from Sprayrite Manufacturing Co.

CUMMINGS & BRICKER, INC.

Distributors of Farm & Irrigation Equipment
RD1, Claremont Rd. (Stover Drive) Carlisle, PA 17013
717-249-6720

Serving Farmers Through Farm Equipment Dealers

