



THE OLD FARMER'S ALMANAC

APRIL 13-19, 1981

Balmy billows and pussy willows.

Income taxes are due on the 15th Titanic sank April 15, 1912
 Full moon April 19 (Sun) Average length of days for the week,
 13 hours, 27 minutes Swallows appear now President Taft
 threw out first baseball April 14, 1910 In April's night sky the
 Big Dipper is almost overhead Man punishes the action, God, the
 intention



Ask the Old Farmer: Why do dogs eat grass? G.W., Boston
 Most any animal, given the opportunity, will eat something out of the ordinary if it feels a spell of sickness coming on. Dogs eat grass, so do cats.

to sort of tone up or scour out their digestive systems. Cows will chew rawhide or leather, and pigs will eat meat, especially pork, under some circumstances. They like fish, too.

Home Hints: If the caning of your chair is sagging, turn the chair upside down and apply a damp towel to the underside of the caning.

OLD FARMER'S WEATHER FORECASTS

New England: Snow in mountains, cold beginning of week, then warm and sunny, possible showers weekend

Greater New York-New Jersey: Week starts rainy south, snow north, and cold, then clearing midweek, very warm at week's end

Middle Atlantic Coastal: Clear and hot throughout the week and weekend

Piedmont & Southeast Coastal: Sunny and progressively warmer throughout the week, then partly cloudy, continued warm end of week

(All Rights Reserved Yankee Inc. Dublin N.H. 03444)

Livestock market and auction news

Lebanon Valley Auction

Fredericksburg, Pa.
 Tuesday, April 7

Report supplied by PDA

CATTLE 232. Compared with last Tuesday's market, slaughter steers steady to strong. Slaughter cows mostly steady to 75 cents lower. Choice No. 2-4 1010-1505 lbs. slaughter steers 61.00-63.35, one at 59.50, few Good 55.00-58.50, Standard 52.25-55.75, Good & Choice holsteins 54.85-57.25, Utility & Low Standard 47.25-51.75. Few Choice slaughter heifers 56.60-58.75, few Standard & Good 50.00-53.75, few Utility 45.75-49.00. Utility & Commercial slaughter cows 43.75-46.00, few to 46.60, Low Dressing 42.00-43.60, Cutters 41.75-44.10, few to 45.60, Canner & Low Cutter 40.00-41.75, Shells down to 30.00. Few Good slaughter bullocks 54.75-57.35, few Standard 50.00-54.00. Few Yield Grade #1 1335-1685 lbs. slaughter bulls 55.00-57.75; couple yield grade #2 1190 and 1580 lbs 54.10 and 54.25. Medium & Large Frame #2 450-930 lbs. feeder steers 47.00-52.00; Large Frame #2 500-670 lbs. feeder bulls 50.50-55.00.

CALVES 198. Vealers grading Standard & Good \$1 to \$2 lower. One Prime vealer at 103.00, few Choice 95.00-107.00, few Good 73 00-

87.00, Standard & Good 90-120 lbs. 64.00-70.00, 65-90 lbs. 59.00-65.00, few Utility 65-90 lbs. 41.00-58.00. Farm calves, holstein bulls 80-145 lbs. 68.00-93.00, mostly 75.00-82.00; holstein heifers 80-160 lbs. 98.00-160.00.

HOGS 342. Barrows & gilts unevenly steady. US No. 1-2 200-230 lbs. barrows & gilts 40.60-41.85, few to 42.35, No. 1-3 200-260 lbs. 40.25-40.85, No. 2-3 200-265 lbs. 39.25-40.50. US No. 1-3 275-445 lbs. sows 32.75-38.75, few to 40.75, No. 2-3 355-525 lbs. 32.00-35.25. Boars 25.00-31.00.

FEEDER PIGS 12. Few US No. 1-3 80-115 lbs. feeder pigs 39.00-46.00 cwt.

SHEEP 27. Bulk of supply spring slaughter lambs sold to the Easter trade. Choice 15-40 lbs spring slaughter lambs 111.00-137.00, few 145.00-165.00, lot 50 lbs. at 95.00. Few Slaughter ewes 23.00-34.00, one at 17.00.

Feeder Cattle Sale

Winchester, Va.

Friday, April 3

Report supplied by VDA

There were 1,330 head sold. All cattle were graded by Representatives of the VDACS's Division of Markets, Livestock Section on USDA standards and sold by the hundredweight.

STEERS: 300-400 lbs. Medium 1 72.00-73.00; Large 1 74.50-77.00, Small 1 71.00; Med. & Large 2 61.00-68.00, 400-500 lbs. Medium 1 77.00-83.00; Large 1 76.00-80.00; Small 1 75.00-80.00; Med. & Large 2 75.00-79.00. 500-600 lbs. Medium 1 74.00-80.00; Large 1 72.00-79.00; Small 1 64.00-67.50; Med. & Large 2 62.00-69.00; Small 2 65.50. 600-700 lbs. Medium 1 66.50-70.00; Large 1 66.00-72.00; Small 1 65.00-66.00; Med. & Large 2 60.00-68.00; Small 2 57.50. 700-800 lbs. Medium 1 \$3.00-67.50; Large 1 62.00-67.00; Small 1 59.00-62.50; Med. & Large 2 60.00-61.50; Small 2 65.00. 800-900 lbs. Medium 1 64.00-64.50; Large 1 63.00-65.00; Small 1 57.50; Med. & Large 2 55.00-58.00. 900-1000 lbs. Medium 1 60.00-61.00; Large 1 59.50-63.00.

HEIFERS: 300-400 lbs. Medium 1 60.00-64.50; Large 1 60.00; Small 1 61.00; Med. & Large 2 59.00-63.00; Small 2 51.00. 400-500 lbs. Medium 1 57.00-60.00; Large 1 57.50-63.50; Small 1 54.00-57.00; Med. & Large 2 50.00-52.00. 500-600 lbs. Medium 1 58.50-61.00; Large 1 55.00-63.00; Med. & Large 2 49.50. 600-700 lbs. Medium 1 56.50-60.00; Large 1 59.00-63.00; Small 1 57.00-58.00; Med. & Large 2 51.00-53.00. 700-800 lbs. Medium 1 54.75-60.25; Large 1 55.75-59.75; Small 1 52.00; Med. & Large 2 47.00.



When you need money, you'll get money and more at Hamilton Bank.

One of the best ways to give you more is by giving you more personal service. We offer local service through local offices, and we'll come right to your farm if that's more convenient for you.

You probably know your local Hamilton Bank manager. He's your neighbor, your friend, and he knows the problems you face every day, especially money problems. He knows banking too, and he has our Agri-Finance Department to back him up.

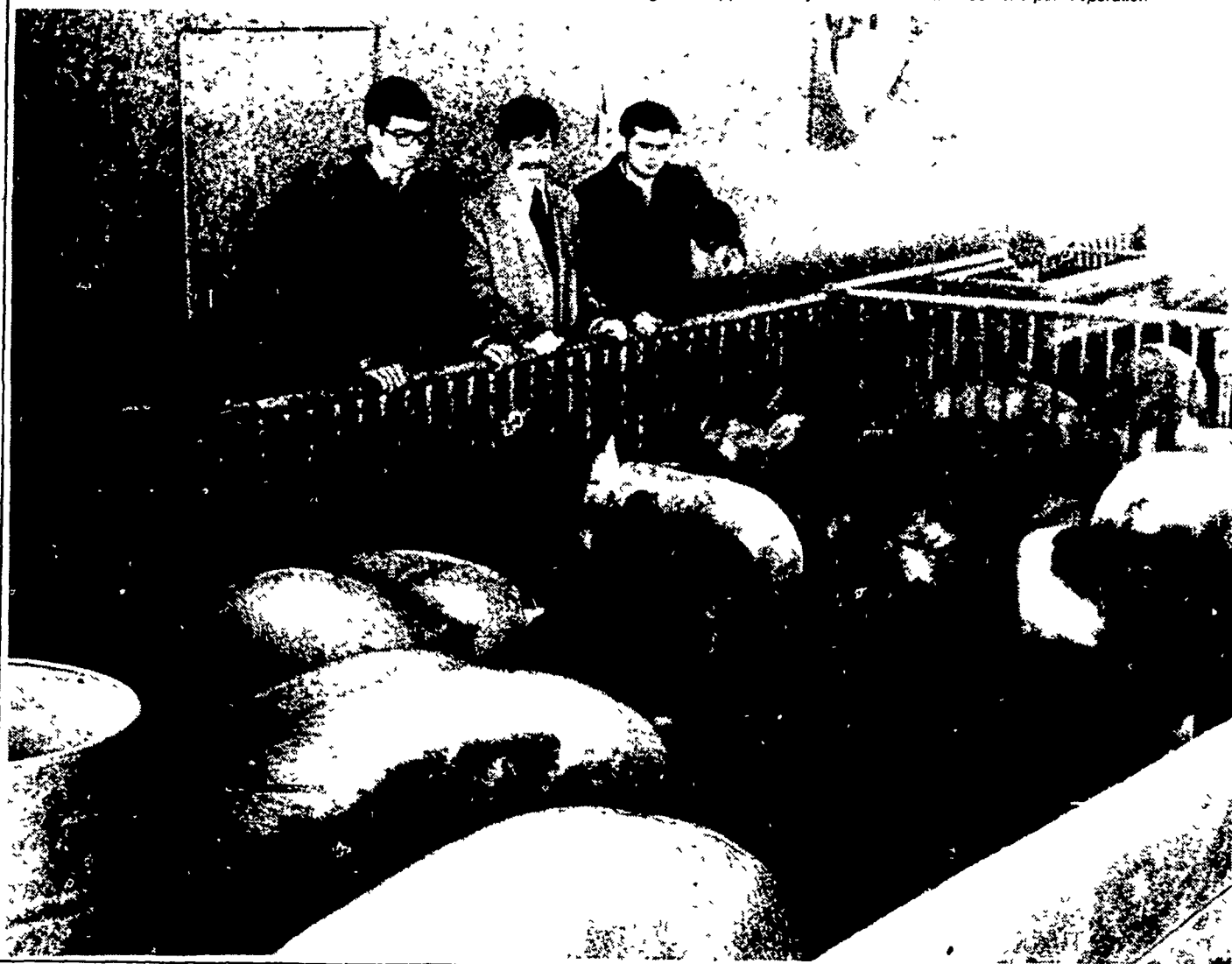
He'll work with you, on a full range of financing, credit, trust and estate services designed for the family farm. He'll help you tailor a program that will fit your individual needs comfortably.

We believe that agriculture, especially the family farm, is the cornerstone of a healthy, growing America. We want to help you keep it that way. We want to give you more for your money, and more for you — and we do.



HAMILTON BANK

Spring Valley Farm at Ephrata R.D. #1 Robert E. Murphy Ephrata Branch Manager (Center) with Edwin N. Kurtz, Jr. and Merle S. Kurtz observing some of their 1200 market hogs. This Partnership also includes 230 breeding sows, approximately 200 steers and a 41 000 bird pullet operation.



Attention! Farmers

Spray Materials Im-Pruv-All Medina

Check Our Prices Before You Buy
 Serving PA, MD, DE, NJ

MELVIN R. WEAVER

2213 Leabrook Road
 Lancaster, PA 17601
 Phone 717-898-8354 or 569-6576

SPECIAL NOTICE!

Starting Friday, April 3 at 11:00 A.M. & Every Friday thereafter

SLAUGHTER CATTLE AUCTION

Steers, Bulls, Heifers & Cows ONLY
 No Calves or Sheep.

There will be good demand for cattle every Friday for Monday's kill. Packers will support us well.

VINTAGE SALES STABLES, INC.

717-442-4181 or 717-768-8204
 L. Robert Frame, Manager
 Home Phone 215-458-5060