



**Somerset  
County  
DHIA  
Report**

FEBRUARY 1981

OWNER	BREED	NO COWS	% DAYS IN MILK	LBS MILK	% FAT	LBS FAT
Robert Bauernmaster	3	82	91.4	58.1	4.1	2.39
Donald Glessner	3	40	95.2	53.9	4.2	2.27
Latush Brothers	3	80	86.4	58.7	3.8	2.22
Robert Bauernmaster	3	80	89.0	57.8	3.8	2.22
Sec Win Farms	3	71	93.9	57.0	3.8	2.18
Harry Mosholder	G3	32	87.6	57.9	3.8	2.18
Leon Knepper	3	92	88.5	55.4	3.9	2.16
Claradale Farms	3	77	89.5	55.2	3.8	2.11
George C Stahl	B3	66	81.8	57.0	3.6	2.07
Paul J Pyle	B3	37	87.3	51.8	4.0	2.07
Frank S Bocsy & Son	B3	40	93.0	51.9	3.9	2.04
North View Farm	3	144	84.4	47.0	4.3	2.03
Donna L & K W Brandt	3	51	92.0	55.9	3.6	2.01
Glenn E Johnson	3	65	94.2	50.6	4.0	2.01
Tice Platz	B8	43	91.3	48.0	4.2	2.01
George N Baer	3	47	91.5	52.9	3.8	2.01
Kimder Farm	B3	61	91.5	57.1	3.4	1.94
Gerald F Carr	3	65	87.6	50.0	3.9	1.93
Timothy D Clites	B3	36	87.2	47.0	4.1	1.93
Double Ott Dairy	3	29	82.8	46.1	4.2	1.93
Reimandale Fm	3	60	80.0	51.8	3.7	1.92
R Taylor & L Bittner	3	60	89.3	51.1	3.8	1.92
William E Hunsberger	B3	51	90.2	48.5	3.9	1.91
Delbert & Ed Thomas	B3	84	98.4	47.7	4.0	1.91
Don R Miller	B3	55	90.6	48.1	4.0	1.90
Zerin Dairy Farm	B3	84	83.4	48.1	4.0	1.90
Urbadale Farm	B3	33	89.4	47.7	4.0	1.90
Wel Lyn Farms	3	74	87.3	47.3	4.0	1.89
Rocky Ridge Farm	B3	69	86.5	50.9	3.7	1.88
Stoney Acres Farm	B3	49	85.8	44.8	4.2	1.88
Milford Valley Farm	B3	50	87.6	47.8	3.9	1.86
Hillegass Farms	3	89	85.7	50.2	3.7	1.85
R Taylor & L Bittner	3	58	88.1	50.7	3.6	1.84
Clark E Weyand	B3	56	92.1	47.2	3.9	1.84
William Blough & Son	B3	112	84.8	45.5	4.0	1.84
James W Ringler	B3	57	89.7	46.8	3.9	1.83
Evan L Maust	B3	36	90.1	46.5	3.9	1.83
Harold E Miller	B3	63	83.4	46.8	3.9	1.83
Wincrest Farm	B3	63	92.1	42.2	4.3	1.81
Marvin E Thomas	B3	49	89.3	44.5	4.1	1.81
Lloyd Lohr	5	33	95.2	37.7	4.8	1.80
Lonnie D Ream	B3	31	87.9	47.2	3.8	1.79
Pax Terra J Paxton	B3	24	100.0	55.3	3.2	1.79
Paul E Yoder	3	37	88.3	47.3	3.8	1.78
Wayne Schrock	3	58	84.1	48.7	3.7	1.78
Charles E Maust	B3	29	87.7	47.9	3.7	1.76
Rosetree Acres Farm	3	46	87.7	48.6	3.6	1.76
Wincrest Farm	B3	62	91.9	41.1	4.3	1.75

Vincent Flannery	120	86	44	3.9	1.74	
William & Vera Shultz	3	43	91.5	47.6	3.6	1.73
Merle Mishler & Sons	B3	35	75.0	46.7	3.7	1.73
P & D Countryman	3	87	88.8	47.1	3.7	1.72
Charles S Wilcox	B3	68	89.0	42.1	4.1	1.72
Donald E Vangilde	B3	66	89.7	47.5	3.6	1.71
Snyder Brothers Farm	G3	64	89.1	43.9	3.8	1.69
Dean E Hillegass	B3	55	82.1	41.0	4.1	1.69
Bar Val Farm, Inc	3	123	80.9	42.1	4.0	1.68
Loyetta Farms	G3	93	81.2	44.3	3.8	1.68
Hillmont	3	81	81.8	42.1	4.0	1.67
William D Marteeny	B3	78	78.5	45.4	3.7	1.66
Stonylake Farm	B3	49	86.3	42.5	3.9	1.64
James W Ringler	B3	57	78.7	40.5	4.0	1.63
James Mostoller	B3	57	81.5	40.2	4.0	1.61
John Zehner	B3	59	83.7	43.6	3.7	1.60
Carl Walker	B3	53	87.2	43.8	3.7	1.60
Elwood Yoder	B3	37	79.7	40.1	4.0	1.60
Somerset Farms	B3	53	84.5	40.5	4.0	1.60
Ray R Carver	B3	60	90.5	42.6	3.8	1.60
Paul & Sharon Fox	B3	37	80.3	42.8	3.7	1.57
Ray R Carver	B8	59	89.4	40.9	3.8	1.56
Strip View Farm	B3	34	82.7	38.9	4.0	1.55
Strip View Farm	B3	37	80.5	40.0	3.8	1.53
Robert D Will	B3	68	84.5	36.6	4.1	1.50
Owen Stellingwert	B3	39	81.4	39.7	3.8	1.50
Robert Hillegass	B3	38	92.6	35.3	4.2	1.50
Hivue Farm	B3	45	92.9	35.6	4.2	1.49
Ruppel D Brant	B3	94	84.4	35.5	4.2	1.48
Allen Rhoads Hope	B3	56	85.7	37.3	4.0	1.48
S Holsopple & Sons	B3	33	85.4	38.8	3.8	1.46
Robert Shockey, Jr	B3	61	90.6	41.0	3.5	1.45
Little Piney Farm	B3	43	87.3	34.8	4.1	1.44

Dale E Leydig	B3	47	89.1	36.5	3.9	1.44
John Zehner	B3	62	78.1	37.7	3.8	1.43
Harveda Blair & Son	B3	66	82.4	36.3	3.9	1.43
Robert K Knopsnyder	G3	45	77.2	38.3	3.7	1.43
Harold E Hay	B3	47	88.2	37.1	3.8	1.42
James R Hemminger	B3	52	87.0	36.9	3.8	1.42
Emmert Weaver	G3	49	90.4	35.4	4.0	1.41
Shaffer & Walker	B3	35	80.4	36.8	3.8	1.41
Arthur Snyder	B3	50	76.6	36.8	3.8	1.40
Royal W Knepper Jr	B3	61	83.1	33.8	4.1	1.39
T Rich, Inc	B3	133	77.6	32.4	4.3	1.38
Willard Maust	3	45	78.2	36.0	3.8	1.38
Donald R Hixson	B3	45	82.1	36.1	3.8	1.38
Glade Triangle Farm	B3	46	78.8	33.1	4.2	1.38
Hays Park Farm	B3	74	97.8	35.3	3.9	1.37
Bernard McKenzie	B3	45	87.0	35.7	3.8	1.36
Richard M Webreck	G3	54	89.8	35.2	3.8	1.34
Robert K Knopsnyder	G3	47	69.8	35.4	3.8	1.34
Friendship Farms	G3	67	69.8	32.3	4.1	1.33
Annie Berzonski	B3	78	76.2	32.3	4.1	1.31
A J Walker Farm	B3	56	81.3	32.8	3.9	1.28
Tunnel Hill Farm	3	60	70.5	34.9	3.7	1.28
Harold Shaulis, Jr	B3	57	81.1	32.9	3.8	1.25
Lewis E Maust	G3	24	79.5	31.2	3.9	1.22
William R Yoder	B4	20	78.7	24.6	5.0	1.22
Jenkins & D Woods	B3	24	95.8	27.6	4.2	1.16
K W & W L Saylor	B3	67	68.1	28.0	4.1	1.14
Arlen W Maust	B3	12	65.5	27.2	3.9	1.07
Jim Brocht	B3	56	80.4	26.1	3.9	1.02
John P Slobozien	B3	22	61.8	26.0	3.7	0.97
Mt David Farm	B3	44	77.5	25.5	3.6	0.92
Dr Edwin M Price	G3	19	37.6	8.0	3.9	0.31
Dr Edwin M Price	G3	19	47.0	7.6	3.8	0.29

## Comment period again extended for milk orders

LANCASTER — The deadline for the public to file exceptions to a recommended decision that would amend price announcement procedures in 29 federal milk marketing orders has been extended to April 13.

Herbert L Forest, dairy official with the U.S. Department of Agriculture's Agricultural Marketing Service, said this second extension was requested by Central Milk Producers Cooperative representatives, who asked for more time to examine the recommended decision.

Forest said the proposal — the only one supported at a public hearing in Clayton, Mo., last August — would provide that the Class II price for a particular month be announced on a tentative basis by the 15th day of the preceding month.

The final Class II price could not

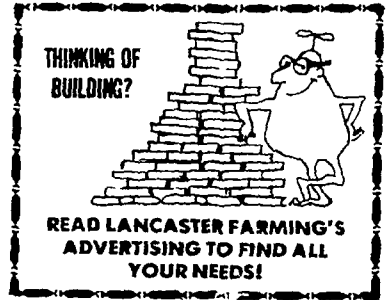
be less than the Class III price for that month. The final Class II price would be announced by the fifth day of the following month when the class III price becomes known.

The hearing to consider changing the Class II price announcement procedures in the 29 orders was necessitated by an order of the U.S. Court of Appeals of the District of Columbia, which ruled the existing announcement procedures invalid.

The notice of the extension was published in the March 25 Federal Register, available at many public libraries. Exceptions to the recommended decision should be sent to: Hearing Clerk, Rm. 1077-S, ITSDA, Washington D.C. 20250.

The 29 milk orders that would be affected by the recommended decision are: St. Louis-Ozarks, Georgia, Tennessee Valley, Chicago Regional, Southern

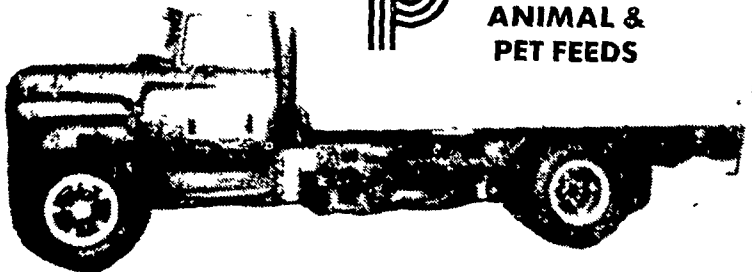
Illinois, Louisville-Lexington-Evansville, Indiana, Central Illinois, Greater Kansas City, Nebraska-Western Iowa, upper Midwest, Neosho Valley, Wichita, Eastern South Dakota, Iowa, New Orleans-Mississippi, Greater Louisiana, Memphis, Nashville, Paducah, Fort Smith, Red River Valley, Oklahoma Metropolitan, Central Arkansas, Lubbock-Plainview, Texas, Central Arizona, Texas Panhandle, and Rio Grande Valley.



## ELMER M. SHREINER T/A GOOD'S FEED MILL



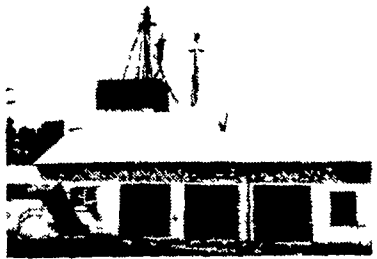
**pennfield feeds**  
ANIMAL & PET FEEDS



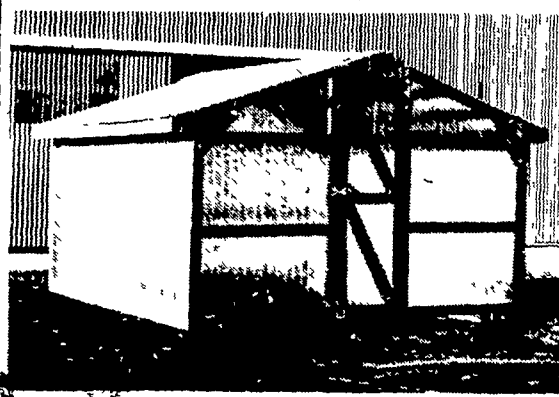
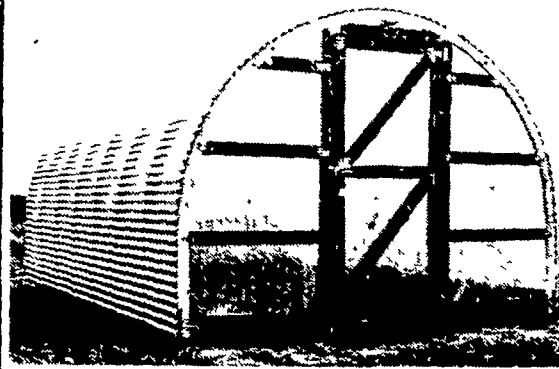
RD 2 New Providence, PA  
1 Mile North of Quarryville Along Rt. 222

PHONE  
717-  
786-2500

Your Route  
Salesman  
Richard  
Ibach



# Rigidply Rafters Mini Green House



- All wood specially treated
- Continuous roof frame with galvanized connections for greater strength and stability.
- No paint necessary
- Built to utilize every inch of space
- Convenient height
- Designed with minimum light resistance
- One 2'6" - 3' wide door allows easy access
- Peak height approximately 7'
- Designed to relocate if necessary
- Tie down anchors to keep building in position
- 15 year Green House panels
- 94% light transmission
- Built locally — will custom build to your need

Other curved arches available for larger green house structures. Width 8' & 10'; Length 8' & 16'.



**RIGIDPLY RAFTERS, INC.**  
RICHLAND, PA. 17078  
Telephone (717) 866 - 6581