

OPEN HOUSE & TILLAGE DEMONSTRATION

AT OUR LOCATION ON
WEDNESDAY, APRIL 15

REFRESHMENTS

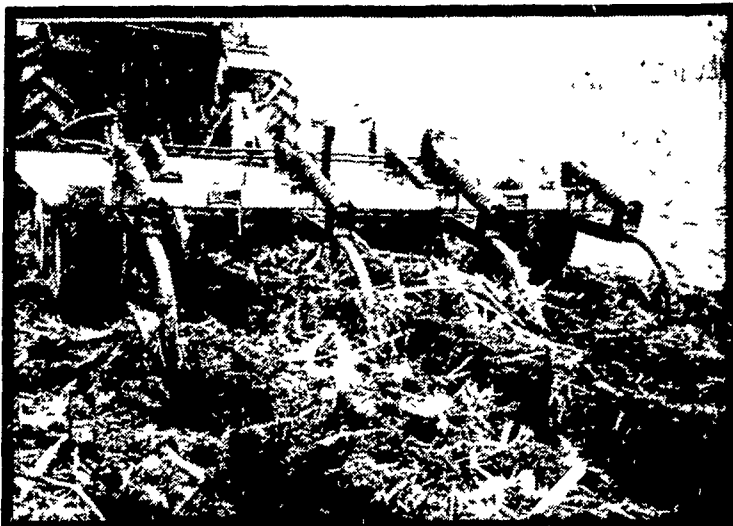
Representatives From Various
Companies Will Be Here To Answer
Your Questions

OPEN HOUSE HOURS: 7:00 A.M. to 9:00 P.M.
DEMOS: 10:00 A.M. to 3:00 P.M.

SEE IN ACTION:



SOIL-MASTER



One trip through your field
**SAVES you TIME, MONEY and most
important, your valuable SOIL!**

5 THRU 15 SHANK WILL BE DEMONSTRATED

CHECK THESE FEATURES:

- Unique 1 1/4" x 2" high clearance shanks. Choice of Torsion-Master or Spring-Master shanks. 15" spacing between shanks.
- Heavy-duty 93 1/2" frame depth. Combination yoke-block clevis and tongue jack. "Converta-Hitch" allows easy leveling adjustment.
- Hydraulic axles, 6 bolt hubs & rims for 11Lx15" flotation tires, transport safety-lock. 2 - 8" stroke cylinders with stroke control for precise depth setting.
- 20" dia. disc coulters slice stalks, leaves, stubble and root crowns into small bits, eliminates bunching and plugging.

LANDOLL SPECIALS:

Prices Good Open House Day Only

- | | |
|----------------------------------------------------------------------|---------------|
| Model 275-7C, 5 Shank w/Cylinders,
Hoses, New Tires, 1 Only | \$3400 |
| Model 275-9C, 9 Shank w/Cylinders,
Hoses, New Tires, 1 Only | \$5300 |

**WE WILL BE DEMONSTRATING
THE NEW LANDOLL TILLOLL**

EXTRA SPECIAL

**ON DEMONSTRATION DAY ONLY
10% CASH DISCOUNT ON ALL PARTS**

**PLUS 10% CASH DISCOUNT ON ALL
CYLINDERS AND HOSES -**

3/8" to 1/2" Diameter

★ HOSES MADE TO ORDER ★

THE NEW TURBOCHARGED HERCULES 160 By SAME — 145 PTO H.P.



What Makes
SAME Tractors
Better?
The SAME
Air-Cooled
Diesel Engine!

2 3 4 5 or 6 cylinder inline diesels provide 35 to 145 h p for the 21 models of SAME 4 WD and 2WD tractors

These fuel efficient engines have double (air and oil) cooling systems and have direct fuel injection from camshaft operated pumps for easier starts reliable performance and lower fuel consumption (up to 40%)

Being air cooled there is no radiator hoses thermostats water filters no water pump no anti freezer no boiling no freezing so about 40% of the down time problems connected with liquid cooled engines are eliminated You benefit by lower original cost lower operating and maintenance costs faster warm up to most efficient operating temperature and longer engine life to name a few

Cylinders and heads are individually replaceable and all vertical parts are interchangeable This means faster easier servicing and maintenance as well as fewer parts to stock

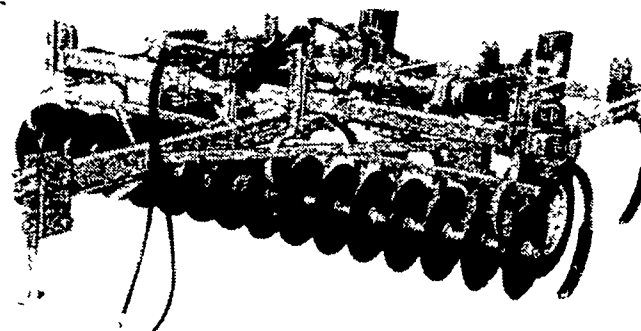
Of course the engine is only part of the story see your SAME dealer to check out test drive and learn about all the special features that SAME offers including a limited 2 yr /3000 hrs warranty and a surprisingly low price tag

Taylor-Way

Check These Soil
Conserving and Trash-
Eating Features

SEE THE PULL-TYPE THREE-BAR
CHISEL PLOW with TRASH EATER ATTACHMENT
and DISK HARROW IN ACTION

- 20" Coulters, spaced 9' apart and mounted on 1-1/8" Square Axles rips through sod and stalks to make chiseling easier
- Flexible Bearing Hangers lets Coulters glide over rocks and underground obstructions Triple-Sealed Regreasable Ball Bearings are mounted in heavy Pillow Blocks
- Weight Holders shipped as Standard Equipment Use weights in rough and hard conditions to increase penetration Weights not furnished, use standard tractor weights
- Trash-Eater Tool Bar mounts forward of front tool bar on Chisel Plow allowing all shanks to be used on true 12" spacing



- Coulters easily adjusted up or down Lets you adjust for both soil conditions and shank sizes Insert ratchet into holes in Flexible Bearing Hanger, remove pin and ratchet up or down as desired

★ SAVES TIME ★ MAKES MONEY

FLEXIBILITY Use as a complete Trash Eater or as Chisel Plow when only a Chisel Plow is needed

CLEARANCE - Can be used on Taylor-Way Chisel Plows equipped with either 26" or 32" Shanks

ADAPTABILITY Fits any Taylor-Way Pull-Type Chisel Plow

COMING...WEDNESDAY APRIL 22, 1981

FIELD DAY DEMONSTRATION

LAMBORGHINI CRAWLERS & SAME TRACTORS

At The Allen Hoover Farm,

Route 1, Mifflensburg, PA (Union County)

HEISEY FARM EQUIPMENT, INC.

SALES, SERVICE and PARTS

- Leyland & Same Tractors
- Taylor-Way - Dunham
- New Idea

RD 1, Box 2294, Jonestown, PA 17038

Phone: 717-865-4526

Located 1/2 Mile South of Fredericksburg off Rt. 343 in Shirksville

Business Hours: 7 A.M. to 5 P.M. Daily, Sat. till noon, Evenings by Appt.

- GT Dryers
- Landoll
- Dion