

## World oilseed supply predicted to be adequate

WASHINGTON, D.C. — Global availability of both protein meals, fats and oils is expected to be adequate to cover foreseeable 1980-81 needs despite a drop in production, according to the U.S. Department of Agriculture's World Oilseed Outlook and Situation Circular released last week.

The report says there are adequate supplies because of larger than normal carryover of the 1979-80 crops in the U.S. and Brazil soybeans and softening demand.

According to the report, world oilseed output for 1980-81 is now estimated at 160.5 million metric tons—8 percent less than in 1979-80. This production level represents an equivalent of 86.4 million tons of 44 percent protein meal and 56.1 million tons of oils and fats (after adding in expected output of fishmeal and related miscellaneous oils and fats).

Highlights of the report include: —U.S. soybean and product

prices tumbled in December in response to exploding interest rates. After starting the month at \$8.68 per bushel, spot Decatur prices dropped below \$7 per bushel before beginning a recovery in mid-December.

—A combination of a much smaller world crop and large carry-in stocks results in world 1980-81 supplies four percent below the 1979-80 level. As a result, world soybean supply and use will be about in balance in 1980-81 with a modest reduction expected in ending stocks.

—World peanut production is estimated at 17.4 million tons—two percent less than in 1979-80—as drought damage to the U.S. crop was nearly offset by better crops elsewhere.

—World copra and coconut oil trade in 1980 was highlighted by the re-emergence of Indonesia as a coconut oil exporter and the increasing tendency of exporters to ship products rather than raw copra. Indonesian 1980 coconut oil

exports are estimated at 75,000 tons, whereas, in 1978, Indonesia imported 92,000 tons.

—Production of rapeseed is estimated at 111 million tons, 900,000 more than in 1979-80. Improved European harvests more than offset lower Canadian output. A major development in recent years has been the rapid in-

roduction into Canada and Europe of new varieties that are characterized by low levels of both erucic acid and toxic glucosinolates, resulting in much more desirable rapeseed products.

—World 1980 fishmeal production was 5 percent less than in 1979, according to estimates by the Foreign Agricultural Service.

Peruvian output dropped sharply, more than offsetting increases elsewhere.

—U.S. October-November trade in oilseeds and products was sharply below the comparable period in 1979. Exports—at \$17 billion—were off by 25 percent and imports—at \$108 million—dropped 20 percent.

## Ultrasonic pregnancy check accuracy goes up with days after breeding

YORK — With today's hog market, producers have to determine as soon as possible whether a sow is pregnant, says Anthony G. Dobrosky, County Agricultural Agent.

In recent years, ultrasonic echo devices have been used, especially with sows confined to gestation crates where they may not exhibit behavioral signs of estrus.

Research at Penn State indicates such devices are most accurate when sows are tested from 45 to 60 days after conception. The most common error found in the study was falsely identifying sows as not being pregnant when they actually had conceived.

Accuracy was about 88 percent in those animals at least 30 days into pregnancy and those not

pregnant. The rate was as high as 95 percent on sows that had been pregnant 45 to 60 days.

Managers with herds of excellent conception rates (88 percent or greater) at first breeding may not need to invest in ultrasonic instruments, concludes Dobrosky. Those having herds with conception rates less than this figure may find the instruments have some value. He suggests sows not be tested until at least the 45th day after breeding.

### WHAT'S YOUR PROBLEM?

Here's A Timely Tip...

#### Apply lime often for best results

To keep your soil neutral, liming every 2 or 3 years is recommended, because of the new higher analysis fertilizers being used today.

**Martin**  
LIVESTONE

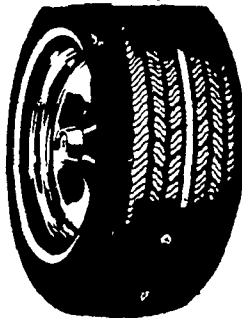
Blue Ball, Pa (717) 354-4125  
Gap, PA (717) 442-4148



### WE BUY HORSERADISH ROOTS

All Grades  
Call Tulkoff  
Cash Paid on Delivery  
From 100 lbs. to 100,000 lbs.  
Toll Free Call Collect  
Day - 800-638-7343  
Evenings Call Collect -  
301-358-0956  
Ask for Martin Tulkoff or  
Dan Kichter

### LET'S GET SPRING ROLLING



With This  
Fantastic  
TIRE  
SALE!

#### STEEL BELTED RADIALS

P185/80R13 .. BR78-13 ...	\$29.00
P175/75R14 .. BR78-14 ..	28.50
P195/75R14 .. DR78-14 ...	32.50
P185/75-14 ... ER78-14 ...	
P205/75R14 .. FR78-14 ...	33.50
P225/75R14 .. HR78-14 ..	38.00
P205/75R15 .. FR78-15 ...	36.00
P215/75R15 .. GR78-15 ..	37.00
P225/75R15 .. HR78-15 ...	39.25
P225/75R15 .. JR78-15 ...	
P235/75R15 .. LR78-15 ...	39.99
G60x14 .. F.B. Belted ..	32.00

STUDED SNOW TIRES  
MUST BE REMOVED BY  
APRIL 1st

- ★ FREE MOUNTING & BALANCING
- ★ ALIGNMENT BY APPOINTMENT ONLY



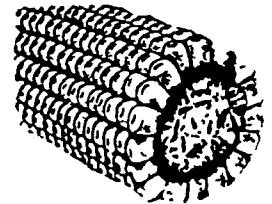
Hours: Mon. and Fri.  
7:30 to 9:00  
Tues., Wed., Thurs.  
7:30 to 5:00;  
Closed Saturday



#### HURST TIRE SERVICE

PHONE (717) 354-4931  
1 Mile West of Blue Ball On Rt. 322

More farmers each  
month prefer  
to buy their



- EAR CORN
- HAY
- STRAW
- PEANUT HULLS

from us for better value and all around satisfaction. At farm or delivered, any quantity as your requirements may be.

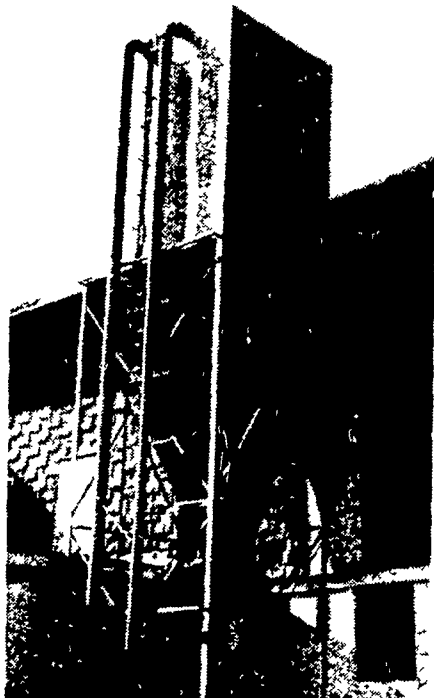
Area Code 717-687-7631

**ESBENSCHADE TURKEY FARM**  
"America's Oldest"  
PARADISE, PA

### CUSTOM BUILT FEED BINS

#### FEATURING:

- High quality 14 gauge steel
- Solid Welded Seams Making it Water and Rodent Proof
- Long Taper and Large Opening for Easier Flow
- Can be installed inside or outside building



Most Installations Can Be Made Without Auger!  
WILL DELIVER AND INSTALL ANYWHERE

### MEL'S WELDING SERVICE

R 1 Kennedyville, Md. 301-348-2179  
If no answer 301-348-5028  
Sales and Service - Grain Equipment, Bucket Elevators,  
Distributors, Pipes and Accessories.

## Ariens

Special Savings Time



5 & 7 HP  
IN STOCK

\$50 OFF!

ON ARIENS  
RT7020 WITH  
ELECTRIC START KIT!

It's your chance to save big during Ariens Special Savings Time! Save \$50 on Ariens popular RT7020 rear-tine tiller with electric start kit!

The RT7020 is the choice of serious gardeners everywhere! So visit your participating Ariens dealer and save \$50 now! It's Ariens Special Savings Time!

### JARED STAUFFER

Martindale, PA 215-445-6465