

Pest control research needed to contain production drain

WASHINGTON, D.C. — Adjustments in federal pest control research policies are mandatory to help restrict US agricultural production losses currently estimated at \$35 billion a year, a leading spokesman for the agricultural chemicals industry said last Friday.

The need for pest control research and extension in agriculture is of paramount importance since pests continue to cause farm production losses equal to 30 percent of the total sales value," Jack D Early, President of the National Agricultural Chemicals Association, said in testimony before the House Committee on Agriculture's Department Operations, Research, and Foreign Agriculture Subcommittee.

Pests that are inadequately controlled, he added, can

diminish the potential value of otherwise significant advancements in production technology in crops, livestock, forests and aquatic resources.

Early told the panel current government regulations constrain agricultural research scientists by diverting them away from their essential activities to provide defensive information for products whose value has already been demonstrated.

"There is an obvious need for readjustment and realignment of research efforts nationally," he said, and such readjustment must include reemphasizing the effective and efficient use of agricultural pesticides as a principal ingredient in pest management programs.

He cautioned the panel that such pest control strategies as Integrated Pest Management should

not be studied as separate entities but in the context of pest control needs in a total crop production system.

The NACA executive said that the industry supports increased research for application technology, basic research in

that could be exploited for control purposes, cooperative research assistance from state experiment stations and extension services for determining potential pest control value of new materials, and crop loss research for allocation planning of resources in

developing pest control strategies. NACA is a non-profit, Washington-based trade association whose 115 members make or formulate virtually all the crop protection chemicals used in the United States and a large percentage used abroad.

Beware of unlabeled seed bags

HARRISBURG — Seeds are the least expensive part of your future crops - but without good seeds, you may not have any crop.

Pennsylvania Agriculture Secretary Penrose Hallowell noted that at this time of year, numerous ads appear in newspapers offering seeds for sale by farmers and other individuals.

"If you buy any of these seeds, be sure that they have been tested and properly labeled," the

Secretary said.

According to the State Seed Act of 1965, all seeds that are sold or offered for sale must be labeled, he added.

The label must tell the buyer the percentage of pure seeds the bag contains and the percentage of seeds that will sprout. It should give information on the percentage of weed seeds present.

"Seed labels and tags are for

your protection," Hallowell said. "Reading and studying the analyses printed on seed tags will help you obtain an idea of what to expect come harvest time."

Anyone finding unlabeled seeds for sale is asked to contact the Agriculture Department's Bureau of Plant Industry, 2301 North Cameron Street, Harrisburg, PA 17110, or to call 717/787-4843.



WIC BEDDING CHOPPER

No Competitor Can Beat The WIC CHOPPER For Performance And Cost

The Wic bedding chopper chops straw, hay or corn fodder and spreads it uniformly under your cows, all in a single operation. When you use chopped bedding, you save on straw and your cows stay much cleaner. On top of that, cleaning up is a breeze...

All models of Wic's bedding chopper have four rows of knives insuring a better spreading action.

Wic has also forseen an adjustable grill in 5 positions to avoid overloading the motor while using different bedding such as damp straw old hay etc.

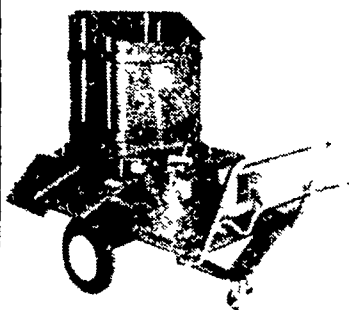
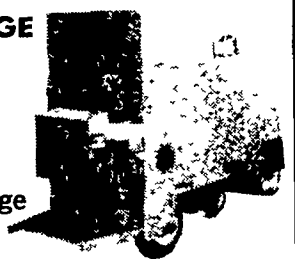
With a simple adjustment that either speeds up or reduces the rotation of the tub you can cut the bedding to the desired length. Wic the futuristic chopper now!



FRAME steel monocoque paint
BARREL plastic 3/16" thick
WHEELS 2 pneumatic of 16"
WHEELS 1 swiveling
BRAKE on wheel swiveling
CAPACITY 1 bale/50 seconds approx
DIMENSIONS width 31" (80 cm) (with out handle) length 45" (115 cm)
DIMENSIONS height 55" (140 cm)
WEIGHT 440 lb (200 kg)

WIC MOTORIZED SILAGE WAGON WITH HYDROSTATIC SPEED CONTROL

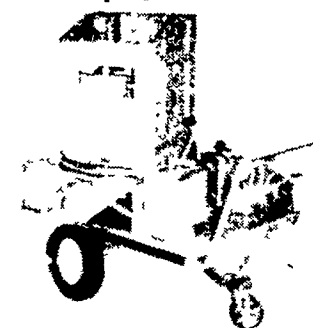
- ★ Regular Feed Discharge or 40" High Feed Discharge
- ★ Electric or Gas Operated



ELECTRIC BEDDING CHOPPER

Wic also makes an electric 200 volt a.c. chopper or a 24 volt d.c. battery operated chopper including an automatic charger. These two models are equipped in the factory with a manual starter panel and are protected by fuses to diminish risk of accidents.

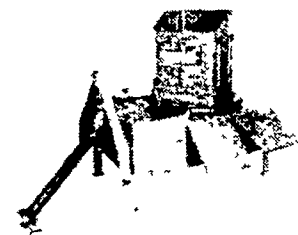
Very quiet these bedding choppers are mostly used on small or medium sized farm. As well as being mobile the 220 volt a.c. model can be installed stationary. Motor 220 volt a.c. 3 h.p. 24 volt d.c. 2 1/2 h.p.



GAS BEDDING CHOPPER

The gas powered bedding chopper is the most popular on the market. Its operation is simple and it handles easily. Equipped with a Honda 4 stroke gas engine the Wic bedding chopper insures maximum output while in use.

Motor 5.7 or 10 h.p. 4 stroke Honda. Starter 5 h.p. manual and 7 and 10 h.p. manual or electric start.



POWER TAKE OFF BEDDING CHOPPER

Wic has perfected a three point hitch PTO chopper activated by the power of your tractor. Easy to install it is ideal for free stalls or in strawberry fields for mulching purposes.

PAUL HORNING

R.D. 1, Stevens, PA 17578

215-267-7208

— DISTRIBUTORS —

JOHN R. NYSTRAND, JR.

R.D. 2, Sugar Run, PA

717-746-1951

— AUTHORIZED DEALERS —

PENNSYLVANIA

RON ACKENBAUCK
Penn Argyl, Pa
215 863 5524

DICK ATKINSON
Montrose, Pa
717 663-2574

CARL R. BAER
Elliottsburg, Pa
717 582-2648

CREUTZBURG, INC.
Livestock & Farm Supplies
Paradise, Pa
717 768-7181

FRED CRIVELLARO
Easton, Pa
215-258-7584

CUMBERLAND FARM AND DAIRY SUPPLY, INC.
Chambersburg, Pa
717-263-0826

DeVRIEZE FARM EQUIP.
Milanville, Pa 18443
717-729-7988

THOMAS DUNLOP
Jersey Shore, Pa
717-753 3196

AARON S. GROFF & SON
Ephrata, Pa
717-354-4631

HISTANDS FARM & HOME
Rome, Pa
717-744-2371

HOLOBUS SALES & SERV.
Meadville, Pa

MARVIN J. HORST
Dairy Equipment
Lebanon, Pa
717 272 0871

JIM'S EQUIPMENT
Springville, Pa.
717-942-6928

STANLEY A. KLOPP
Bernville, Pa
215-488-1500

LANDIS AUTOMATION
Milton, Pa
717-437-2375

LEO LANDIS
Millersburg, Pa
717-692-4647

LUCAS BARN EQUIP.
Bellefonte, Pa
814-383-2806

M & M BARN EQUIP.
Westheld, Pa

HARLEM MARTIN
Troy, Pa
717-297-3972

DICK McCARTY
Forks ville, Pa
717-924-3374

MORRIS FARM EQUIP.
Ogdensburg, N J
201-827-6432

OSWALD EQUIPMENT CO.
Hartstown, Pa
814-382-4445

OTT BROS.
McConnellsburg, Pa
717-485-4114
717-485-4662

JOHN PARYS
Laceyville, Pa
717-869-1464

RUMMEL DISTRIBUTING
Cabot, Pa
412-352-9219

PAUL SHOYER, INC.
Carlisle, Pa
717-243-2686

SHOW EASE STALL CO.
Lancaster, Pa
717-299-2536

SOMERSET FARM SUPPLY
Somerset, Pa
814-443-2841

ATLEE F. REBERT
Littlestown Pa
717 359-5863

HARRY L. TROOP
Cochranville, Pa
215-593-6731

UMBERGER'S MILL
Lebanon, Pa
717-867 5161

W & J DAIRY SALES
Oxford, Pa
717-529-2569

ZIMMERMAN'S ANIMAL HEALTH SUPPLY
Litz, Pa
717-738-4241

DELAWARE
SAMUEL DIXON, JR.
Clayton, Del
302-653-7232

VIRGINIA
JOSEPH C. BENDER
Catlett, VA
703 788-4815

MARYLAND

TRI-STATE FARM AUTOMATION
Hagerstown, Md
301-790-3698

P & S EQUIPMENT
Street, Md
301-452-8521

NEW JERSEY

TOM MULVANEY
Flemington, N J
201-782-1679

RUSS SMITH
Warren Glen, N J

NEW YORK

JAKE MERRITT
Owego, N Y
607-687-4672