

**USED EQUIPMENT**

**TRACTORS:**

IH 1566 D, Cab & Air, 30 5x32 tires, new TA, real Nice - \$23,000!  
 IH 1066 D, Cab & Air, Engine Overhauled, New Clutch - \$16,500  
 JD 4520, 20 8x38 Radials, No Cab \$13,500  
 IH 706 Gas, Eng Overhauled, New Paint - \$5,950  
 IH 560 Gas, 450 Gas, 400 Gas, 300 Gas  
 Int 4 **SOLD** 4 Picker  
 185 Lo Boy w Mower, Real Nice!  
 185 Lo Boy w 3 pt Hitch Mower, Real Nice!  
 MF 165 Diesel  
 MF 65 Diesel w/Loader

**TILLAGE:**

IH 475 20'6" Folding Disc Harrow, Good Cond  
 Bush Hog 18' Folding Disc Pittsburg 12' Disc  
 IH 370 13' Disc, Like New **SOLD**  
 IH 370, 350, 37, 35 In Various Sizes  
 IH 55 11 ft Trailing Chisel  
 MF 520 18' Folding Disc Harrow  
 JD 12' 3-Rank Chisel

**PLANTERS:**

4 & 6 Row Cyclos, Field Ready!  
 JD FBB 15x7 Comb Single Disc, Good Shape!  
 JD 494-A, DD, 4 Row Planter  
 IH No 10 13x7 Plain Drill  
 IH No. 10 16x7 Single Disc, Comb, Hyd Lift  
 IH No 10 16x7 Single Disc, Comb  
 Oliver 24x6 Combination Drill  
 Oliver 17x7 Combination Drill  
 IH 461 4-Row 36" Cult, Front Mtd

**COMBINES:**

**WAIVER TILL 9/1/81**  
 IH 915 6-Row Head, Low Hrs  
 810 15' Floating Cutting Bar  
 810 13' Floating Cutting Bar  
 810 15' Stand Cutting Bar  
 IH 403 w 4 Row Wide Head  
 IH 315, 2-Row Wide Head  
 IH 205 2-Row Wide Head  
 IH 76 **SOLD**  
 JD 30 Pull Type

**ERB & HENRY EQUIP., INC.**  
 New Berlinville, PA 19545  
 Ph (215) 367-2169  
 Winter Hours.  
 Daily 7-5.30, Sat 7-1

**FARM EQUIPMENT**

Farmall Super M W/Live Take Off new rubber excellent condition  
 Huntingdon Co  
 814 632 6630

**FARM EQUIPMENT**

For Sale One Papec 180 forage harvester with 3 heads 2 WR corn, one pickup & 2 WR snapper  
 Huntingdon Co  
 814 667 3724



**Special Reduced Prices Through March 31, 1981 on Equipment in Stock**

NEW	CASH-NO TRADE
MF 245 DLS Tractor, 8 SP	10,400
MF 255 DSL Tractor, 8 SP	12,200
MF 255 DSL Tractor, MP	13,500
MF 265 DSL Tractor, 8 SP	13,200
MF 265 DSL Tractor, MP	14,400
MF 2745 DSL Tractor, MP	32,500
MF 154/4 DSL Tractor	15,500
MF 184/4 DSL Tractor	19,000
MF 120 Baler	4,500
MF 124 Baler	5,400
MF 22 Bale Thrower	1,500
MF 25 Rake	1,500
MF 520 Disc	3,700
MF 43 Plow	1,400
MF 129 Chisel Plow, Mounted	1,950
MF 129 Chisel Plow, Pull Type	2,650
MF 640 Planter	6,500
MF 33 Grain & Fertilizer Drill	3,700
McConnell 16 ft Transport Harrow	1,400
McConnell 16 ft Cart Type Harrow	1,750
McConnell 20 ft Transport Harrow	1,500
Used MF 2805 DSL Tractor, MF, Cab, 350 Hours	29,000

**USED**  
 IH 350 Tractor  
 MF 135 Gas Tractor  
 DB 1200 Deisel Tractor  
 MF 410 Combine w/43 Corn Head  
 MF 540 Diesel Combine  
 MF 750 Diesel Combine Used 2 Seasons w/ New Grain Table  
 MF 760 Diesel Combine w/16' Heads  
 Case 1160 Combine w/13' Grain Table  
 Bobcat Melrose 700 Skid Loader  
 NH L 775 Skid Loader

**DEALERS FOR:**

Hamilton	McDade	Todd
Haybuster	McConnell	Turnco Gravity Wagons
Cat Parts	Mitsubishi	Vicon
Conde	NH	Wisconsin
Husqvarna Saws	Pequea Hay Tedders	Woods
MF Mathews	George Tenney	J S Woodhouse

**WAIVER OF FINANCE CHARGES ON ELIGIBLE NEW & USED: TRACTORS TILL 10-1-81 GRAIN COMBINES TILL 8-1-81 CORN COMBINE TILL 9-1-81 PLUS LOW FINANCE RATES. 13.9% DURING MARCH. 14.4% DURING APRIL. OFFER ENDS APRIL 30**

**ABRACZINSKAS Farm Equipment, Inc.**  
 RD 1, Catawissa, PA.  
 717-356-2323  
 (south on Rt. 42)

**FARM EQUIPMENT**

1978 manure spreader endgate real good shape, \$1450 717 665 3860

(New) NH 310 baler with engine \$5200 Pequea Machine, 3230 E Gordon Rd, Gordonville Pa 17529

NH 489 haybine JD 346 baler with thrower both excellent condition Parkesburg, 215 857 3460

**FARM EQUIPMENT**

For Sale MF 265 8 speed, Deutz 5206 Both in good condition 215 267 3281

For Sale JD 3010 diesel tractor less than 2400 hrs on overhauled engine also Gehl 115 mix all, both in good condition 717 545 1834

Little Giant 18 elevator with wheels, like new, also Little Giant drag elevator Call 215 926 1428 No Calls Sat

**FARM EQUIPMENT**

7040 AC diesel tractor Farm Credit Office P O Box 92, Curryville, PA 16631 814 793 3784

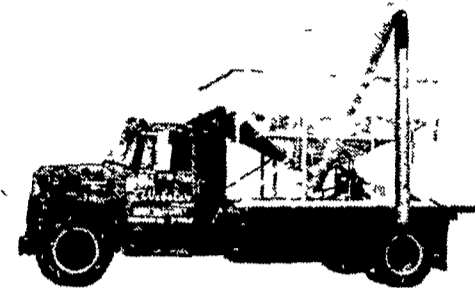
NH model 33 chopper, 2 row 2 mounted corn planters for Farmall C and Super C tractors, 2 row pull type JD planter, 215 679 7763

JD 2 section harrow, JD 3 section harrow 215 679 7763

**FARM EQUIPMENT**

For Sale 3 Grove Silage wagons with roofs heavy running gears, hyd driven new flotation tires Large industrial steam cleaner IH cub tractor with new mower newly painted, new tires Lime fertilizer spreaders 1970 Ford cabover with Kraus spreader body 1971 Int 2010 tandem with Kraus spreader body 304 725 2465

**THE Webster LINE THE WOODEN BODIES**



- ★ 8 Ton Buggy-Spreads damp lime & fertilizer from 100 to 3000 lb.
- ★ Also used as grain wagon, unloads in 6 minutes.

**PUT YOUR ORDER IN NOW! LARGE DISCOUNT OFF DEMOS QUANTITIES LIMITED**

- ★ THE TENDER THAT WON THE EAST
- ★ 5 ton fertilizer spreader
- ★ 5 - 8 - 10 ton fertilizer and grain tenders.

**S.L. WEBSTER & SONS, Inc.**  
 Federalsburg, MD 21632  
 301-754-5511  
 Salesman - Donald O. King

**New Idea, Gehl, Hesston, Brillion Dealers**

**STOP BY AND SEE US AT OUR NEW LOCATION JUST ACROSS THE STREET**

**NEW EQUIPMENT**

Gehl BU 630 3 btr. Unloading Wagon  
 Brillion 10' Double Roll Pull Type Alfalfa Seeder  
 Killbros Model 350 & 375 Grain Boxes w/hyd. Augers  
 Pequea Hay Tedders at 1980 Prices  
 801 Uni Power Unit  
 Mid-West Buster Bars in Stock  
 Brillion GLP64 5' 4' 3 pt Landscape Seeder

New Hesston 6550 SP.WINDROWER Hydrostatic Drive, 12' cut w/double sickle, 73 H P. Perkins Dsl w/cab

Demo Century Weed Eliminator Recirculating Sprayer (Front Mount) 4R Cent. Pump SPECIAL PRICE 1 only

**USED EQUIPMENT**

16' Dion wagon on new Gehl 10 ton running gear  
 16' Dion Wagon on used running gear  
 Lamco unloading wagon  
 Ford 3 pt 2Bx16" Plow, very nice condition  
 705 Uni Diesel w/767 super chopper, 763 3R corn head and 766 pickup head  
 704 Uni w/729A sheller & 738 4RN Corn Head, Power Unit has only 750 hrs  
 NI 710-711 Uni Combine  
 Ford 8N Tractor w/Sauder Loader  
 JD 10' Packer w/4" Axle & 18" roll  
 NI 213-217 sgl btr 176 bu Spreader w/hyd endgate  
 NI 212-217 sgl. btr. 146 bu. Spreader w/hyd. engate  
 IH Tandem Axle Model 275 Bu Spreader  
 Gehl #72 Flail Chopper, very nice cond.  
 Wic Straw Chopper, 3 h.p. electric in stock  
 AC Model A Gleaner 12' Combine  
**LAWN & GARDEN**  
 MF 85 Lawn Tractor, new engine  
 Jacobson 7 h.p. Riding Tractor  
 (2) MF 7 h.p Riding Tractor  
 MF 8 h.p Hydrostatic Drive  
 New Gibson Rototillers in Stock

**UMBERGER'S MILL**

Dial 717-867-5161 or 717-867-2613

**FEED - GRAIN - FARM EQUIPMENT**

RD #4 (Fontana) - Box 545 LEBANON, PA 17042

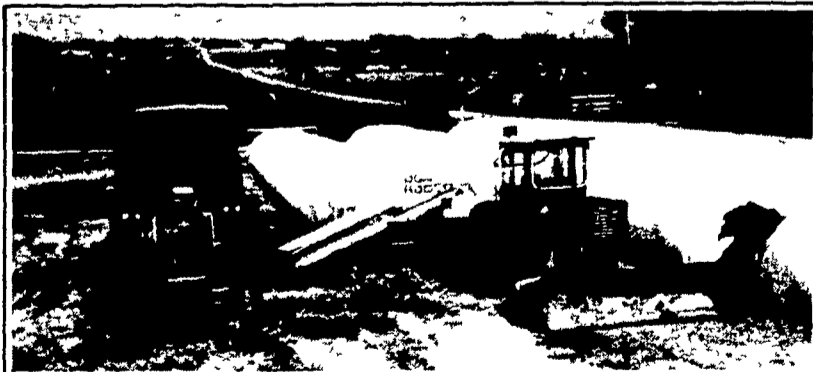
I want to know more about the Ag-Bag System

Mail To: **AMERICAN AG-BAG INC.**  
 206 E Main St., Box 61  
 Brownstown, Pa. 17508

NAME \_\_\_\_\_  
 ADDRESS \_\_\_\_\_  
 CITY \_\_\_\_\_  
 STATE \_\_\_\_\_ ZIP \_\_\_\_\_  
 PHONE \_\_\_\_\_

**INDIVIDUAL FARM TOURS**  
 SEE & HEAR ABOUT AG-BAG SEALED STORAGE  
 CALL FOR YOUR PERSONALIZED TOUR

**AG-BAG THE AFFORDABLE SYSTEM**



**AMERICAN AG-BAG INC. FORAGE SYSTEMS**

206 E Main St., Box 61, Brownstown, Pa Lancaster County  
 717-656-4251 Call Collect

**DESIGNED FOR THE 80's HIGH MOISTURE STORAGE WHEN & WHERE YOU WANT IT**

- FEATURES**
- ALL HYDRAULIC OPERATION
  - SELF POWERED UNITS AVAILABLE
  - EASILY TRANSPORTABLE
  - UNLIMITED SEALED STORAGE

STRETCH YOUR FORAGE DOLLAR — THROUGH PREVENTION OF SHRINKAGE AND SPOilage



AG-BAG CORPORATION

BANK FINANCING - Short and Long Term Leasing Available

Field Queen Forage Harvesters **SALES, SERVICE & PARTS** Hesston Farm Equipment

Exclusive Dealer For Pennsylvania, New Jersey, Maryland, Delaware, Virginia, West Virginia  
 Note. We Need Part Time & Full Time Salesmen for These Areas