

## New semi-solid manure handling equipment makes job easy

FLEETWOOD — Showing just how easy it is to empty a pit-full of semi-liquid manure was the purpose of an Open House sponsored by Headland-Martin Inc. at the farm of Joseph and David Ruth on Tuesday.

Farmers, who took some time away from the plow on this beautiful Spring day, watched as a 'new' manure handler, called the Equalizer, "inhaled" the slurry and pumped it into a 167 bushel (struck level) spreader, known as the Martin Scavenger 1466, filling it in exactly 1½ minutes.

According to local dealer Joel Yorgy, the Equalizer efficiently loads semi-solid manure — manure that's too thick to pump and too thin to bucket. He explained when bucket loaders are used to clean out semi-solid manure from holding pits, farmers spend too much time "chasing" the manure.

Mervin Martin of Myerstown, who created this manure handling equipment, claims his manufacturing company is the only one to address the problems of handling semi-solid manure.

He said the Equalizer has been on the market for a year, and has found homes on about 50 farms in Pennsylvania, New York and the New England states. The creation of this breakthrough for loading "sloppy" manure took three years, he explained.

Martin recalled how he saw the

need for semi-solid manure handling equipment back in 1977.

"All the equipment on the market from the other companies were 'me-too's' — that is, everybody else had the same types of equipment.

The Equalizer enables the farmer to handle the biggest range of manure with one piece of equipment. It can handle anything from liquid to dry pack from box stalls."

The Equalizer, which presently costs about \$5300, fits on any tractor with HP's of 60-85.

Martin pointed out the Agway Research Farm in New York owns and has tested his piece of machinery.

"Although it's not in writing yet, they've found the Equalizer to be the most fuel efficient manure handling system on the market today," he boasted. "It eliminates agitation pumps used in other systems, and also the need to run a tractor continuously to keep the manure stirred up. And, with our equipment, there's no need to add extra water in order to pump the manure."

Martin said the Agway farm tested the Equalizer on a pit holding the manure of over 100 cows. He said the study showed a 65 HP tractor used only 15 gallons of fuel to empty the pit.

"If you take those 15 gallons and apply it to a pumping-agitation system, it would allow only 2 hours



With Mervin Martin at the throttle, the latest in semi-solid manure handling equipment, called the Equalizer, 'chews' into the pitful of manure at Vista Grande Farm, located near Fleetwood in Berks County. Martin, who developed the Equalizer specifically for han-

dling 'sloppy' manure, pumps the semi-solid waste from Joe and Dave Ruth's dairy operation into another Martin creation, a spreader called the Scavenger. Filling the 167 bushel spreader took only 1½ minutes.

worth of pumping. To empty the pit, it would take five-times the fuel," said Martin.

Along with the Equalizer, Martin has developed two manure spreaders. The spreader known as the V Model has recently been patented, he said, the other, known as the Scavenger, will be patented

in the future.

In its first year on the market, the Scavenger has been sold to 250 farmers, Martin said, with an average cost of \$9000. The V Model, available since 1977, has an average list price of \$7000, with about 450 models sold to date.

Martin said he's optimistic

about this year's sales volume and anticipates a combined sales of 500 units.

For more information on the manure handling equipment contact Carl Just, sales manager, Headland-Martin Inc., 841 Kutztown Road, Myerstown, PA 17067, telephone 717/933-4157.

## Md. cattlemen to meet

MT AIRY, Md. — The Maryland Cattlemen's Association will hold their Annual Meeting and Election of Officers April 2, 6 p.m., at the Mount Airy Fireman's Activities Building in Mt. Airy, Maryland on Rt. 27 just off I-70.

Dinner will be served at 6:30 p.m., advance reservation required.

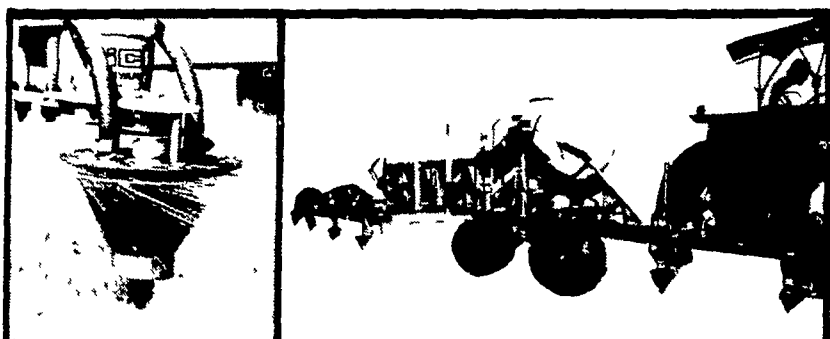
The program will feature Al

Evans who is associated with the Maryland Food Producers. Evans will offer ideas and suggestions to help the Cattlemen's Association with their new beef promotion project.

All interested persons are invited to attend. To make dinner reservations call 301/489-4519 before March 29.

# GROUND PLANE

It could cut some pesticide cost 50% or more!



Controlled droplet size offers three major advantages:

1 REDUCTION IN CHEMICAL RATES  
Although additional research is required, growers in 1980, on thousands of acres throughout the U.S.A. cut dosage rates 50% or more. Savings reported by growers were as high as \$20.00 per acre.

2 REDUCED WATER REQUIREMENTS  
C.D.A. lets you cover more acres per day! Hauling water is all but eliminated. Time lost refilling is all but eliminated. The Ground Plane with one 150 gal. tank can cover more than 300 acres without refilling.

3 REDUCED DRIFT

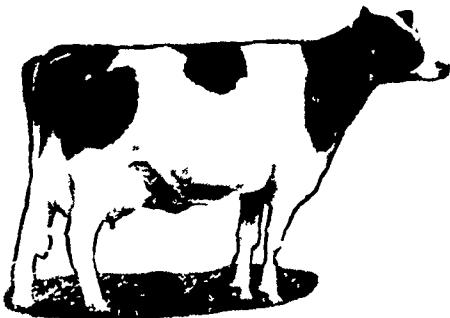
At wind speeds of 25 k.p.h. rotary atomizers produce less than half the number of drifting droplets that a fan nozzle in winds of only 5 k.p.h. produces. This means greater safety to other crops, animals, fish and humans.

GROUND PLANE from Sprayrite Manufacturing Co.

CUMMINGS & BRICKER, INC.

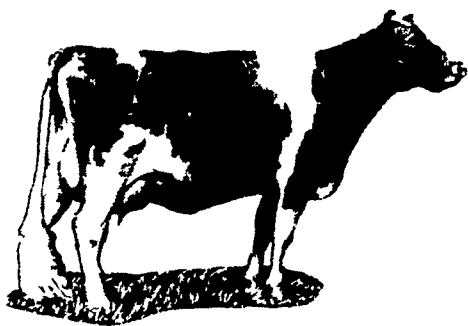
Distributors of Farm & Irrigation Equipment  
RD 1, Claremont Rd., (Stover Drive) Carlisle, PA 17013  
717-249-6720

Serving Farmers Through Farm Equipment Dealers



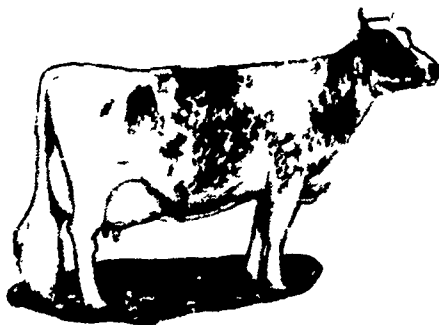
### WHATEVER HERD YOU HAVE

HOLSTEIN  AYRSHIRE  
 GUERNSEY  JERSEY

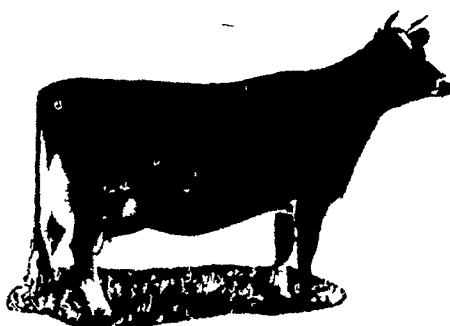


### FEED FLORIN

DAIRY FEEDS  
TO YOUR HERD  
TO MAKE MILK AND MONEY



For a healthy, highly productive herd, FLORIN Enriched Dairy Feeds are scientifically formulated, tested and proven. Feed it regularly, and see the results...more milk from cows, more money for you.



### WOLGEMUTH BROS., INC.

MOUNT JOY, PA  
PH: 717-653-1451

