

## PUBLIC AUCTION

**108 ACRE  
LEHIGH COUNTY FARM  
MONDAY, APRIL 13, 1981**

at 12 Noon

20 miles west of Allentown between Rt. 100 & Kempton, just south of Kistler Valley Road along Rt. 863, Lynn Twp., Lehigh County, Pa.

### REAL ESTATE CONSISTS OF

108 Acres of level and rolling land in agricultural area with large stone and brick stucco dwelling, containing 8 rooms, 2½ baths and full basement. Recently remodeled, new plumbing, wiring and insulation; modern kitchen, wall to wall carpeting; Beautiful large barn and other out buildings; large farm pond, stream and 3 springs. Property must be seen to be appreciated. For inspection, call for appt 215-395-8084.

Terms: 10% down day of auction, balance on or before June 1, 1981 or favorable owner financing terms can be arranged by calling the Auction Co.

Ordered by  
**NEVIN D. & ESTELLA C. FISTER**

Conducted by  
Ralph W. Zettlemoyer Auction Co. Inc.  
(215) 395-8084

## AUCTION SALE

BELLEVILLE, NEW JERSEY  
SALE BY ORDER OF  
**TOLTECH METALS & FAB. CO.**  
COMPLETE LIQUIDATION OF ASSETS  
FABRICATING PLANT  
POWER SHEARS, BRAKES, PRESSES  
AIR COMPRESSORS, TOOLS,  
WELDERS, LIFT TRUCK, SHOP  
& OFFICE EQUIP.  
**TUESDAY, MARCH 31, 1981**  
10 A.M. ON PREMISES  
TOLTECH METALS & FABRICATING CO.  
357 CORTLANDT ST.  
BELLEVILLE, N.J.  
**PRESSES, BRAKES,  
SHEARS, GRINDERS**

10' x 3/16" Cincinnati 150 Ton Press Brake, Model 90 x 10, (2) 6' & 10' Wysong Power Shears, (2) 16" & 10" Press Brakes; (2) Weidemann Panographic Turret Punches, (3) Johnson, Federal & Rousselle OBI Presses, 40 to 50 Ton, (5) Rousselle Punch Presses, 15 to 25 Ton, Punch & Press Brake Dies, (3) Rockwell & Clausing Drill Presses; 6" x 18" D-All Surface Grinder, (2) Setco & Baldor Dual Wheel Electric Polisher/Grinders, Everett Cut-Off Saw, Thompson Electric Riveter, Asst Power Tools.

### COMPRESSORS, WELDERS, DEGREASER, ETC.

(3) Kellogg-American & Dresser Air Compressors, 10 & 30 HP, (5) Miller-Linde Helarc Welders, TRW Nelson, Westinghouse & Linde Sigma Arc Welders (2) Miller Mig Welders, Spot Welders, Miller Big Mig Gun, Wire Feeders, Acetylene Welding Cart and Tanks; Lupoline Tumble, Portair Blower Exhauster, Phillips Vapor Degreaser, Graco Electrostatic Power Pack & Gun, (3) Graco Paint Pumps & Spray Guns, (2) Devilbiss Paint Spray Guns; (2) Paint Spray Booths

### 11,192 LBS. SHEET METAL, BAR STOCK

11,192 Lbs Alum, Steel & Galvanized Sheet Metal, 877 Lengths Bar Stock Consisting of Alum, Steel & Galv Channel, Angle Iron, Pipe, Round & Flat Stock, Quan Asst Nuts, Bolts, Screws, Washers, Rivets, Hinges, Etc

### FORK LIFT, SHOP & OFFICE EQUIPMENT

Allis Chalmers 7000 lb Cap Propane Forklift Truck, (32) Sections Metal Shelving, H D. Shop Vacuum, 2000 lb Cap Platform Scales, Hydraulic Pallet Jacks, Metal Locker Units, Work Tables, Pallets, Hand Trucks, Remington Adding Machine, Adler Elec Calculator, Weber Label Printer, Time Clock, Stencil Machine, Air Conditioner, File Cabinets, Wood & Metal Desks, Tables, Chairs, Etc

CALL FOR ILLUSTRATED BROCHURE

INSPECTION: MONDAY, MARCH 30,  
1981 - 9 A.M. to 4 P.M.  
TERMS: CASH OR CERTIFIED  
CHECK - 25% DEPOSIT REQUIRED

**Wm. F. COMLY & SON**

Auctioneers  
1425 E BOSTON AVE PHILA PA (215) 634-2500

## Public Sales Register

Closing Date - Monday, 5 00 P M  
of each week's publication

SAT APR 4 9 00 A M  
Consignment Sale of Farm  
Equipment and  
Machinery, including the  
Estate of Kenneth Bond  
Held at the Sechrist Sales  
Co Livestock Auction  
Grounds - about 5 miles  
southeast of Stewart  
stown York Co., PA near  
the Village of New Park  
Sechrist Bros Auc  
tioneers

SAT APR 4 10 30 A M  
Patrick E. Mahany Disper  
sal of Modern Potato and  
Grain Equipment  
Located 1 mile west of Rt

## PUBLIC SALE

Of Household Goods, Antiques  
Woodworking Tools, Guns  
**SATURDAY, APRIL 4**

10:00 A.M.

Location: From Blue Ball take Rt. 322  
west one mile to lane on right, (near  
Hurst's Tire Service). Watch for Yellow  
Sale sign. East Earl Twp., Lancaster Co.,  
Pa.

### Antiques - Household Goods

Slant Top Desk with Glass Knobs; Marble  
Top Parlor Stand; 5 - Plank Bottom Living  
Room Chairs; 3 - Plank Bottom Kitchen  
Chairs; 6 - Cane Seated Chairs and Rocker; 2 -  
Rolltop Double Beds; Old Wood Chest; Wooden  
High Chair; Old Parlor Stand; Grandfather  
Wooden Rocker; 2 - Blanket Chests with  
Shelves, one with two drawers; 2 - Chest of  
Drawers with Glass Knobs, Wooden Clothes  
Tree; Wardrobe; Hallrack with Beveled Edge  
Mirror; Large and Small Copper Kettles; 2 -  
Wooden Rockers; WOODEN DOUGH TRAY;  
Library Table with Drawer, Buffett with  
Mirror, nice, Washstand, 11' Open Back Bench  
from the Weaverland Menn. Church, Wooden  
Butter Churn and Mold; Old Kneehole Desk  
and Stool, 6 Board Ext. Table, 2 Board Ext.  
Table, Dropleaf 1 Board Ext Table, Water-  
berry Mantel Clock; Old Kitchen Cabinet,  
Butcher Bench.

Several Crocks and Jugs, Warm Morning  
Coal Stove; Pot Belly Stove, 2 - Ladles; Old  
Child's Walker; Chest of Drawers; 3 - Wall  
Mirrors, G.E. Electric Range, Frigidaire  
Refrigerator, as is; Frigidaire Auto. Washer;  
White Treadle Sewing Machine; Recliner;  
Single Bed with Spring and Mattress, Corn  
Dryer; Porch Bench; Lard Press, Electric  
Lionel Train; Blankets, Skillet, Old Misc  
German and English Books.

### Guns

Remington 12 Ga. Double Barrel Shotgun,  
Paragon Model C5 12 Ga. Double Barrel  
Shotgun, Stevens Model 58B 410 Shotgun with  
Clip; Page-Lewis Arms 22LR Lever Action  
Rifle, 22 Single Shot Rifle; 3 - Fishing Rods,  
Landing Net

### ONE HORSE TWO SEATED CARRIAGE ONE HORSE SPRING WAGON Woodworking Equipment and Tools

Craftsman 12" Planer with 1½ H.P. Motor,  
Craftsman 6" jointer with ¼ H.P. Motor,  
Craftsman 4" Jointer; Craftsman Band Saw  
with Motor, Craftsman 10" Table Saw with ¼  
H.P. Motor, Craftsman 5/8" Shaper with ½  
H.P. Motor; Craftsman Belt Sander with  
Motor, Large Homemade Belt Sander;  
Craftsman 4' Lathe with ½ H.P. Motor,  
Craftsman ½ H.P. Drill Press, Craftsman 10"  
Radial Arm Saw on Stand; Black-Decker 7/8  
H.P. Portable Router with Attachments,  
Black-Decker ½" Drill, 3/8" Variable Speed  
Drill, ¼" Drill, 6½" Power Saw; Portable  
Hand Sander and Jig Saw, Craftsman 8" Arbor  
Dado Set, Reversible Speed Reducer, Drill  
Press Vise, Lathe Tools, Bench Vise, Screw  
Jack, 32' Ext Ladder, Work Benches, Shop  
Stove, Several Glue Clamps, Chisels; Brace,  
Bits, Tape, Hammers, Level, Plane, Hand  
Saws, Augers, Wooden Mallet, Wooden  
Carpenter Tool Box, Nails, Screws, Shoe  
Lathe, Adjustable Wrenches, Grease Gun,  
plus more related tools, Saw Buck on Wheels,  
Misc Cherry, Walnut, Pine, Poplar Lumber,  
Grindstone, Corn Fodder Chopper, Bottle Gas  
Heater, Raleigh 3 Speed Bike

SALE ORDER. Household Goods, Antiques,  
Woodworking Tools, Carriage Come early and  
enjoy the day with us

Sale for  
**GEORGE S. ZIMMERMAN EST.**  
Blue Ball National Bank, Exec  
717-354-9497

Aucts.  
Nevin Z. Martin & Lewis B. Groff  
Clerks: Martins

Lunch by  
Indiantown Menn. S.S. Class  
No out of state checks  
Not responsible for accidents

Lancaster Farming, Saturday, March 28, 1981—D37

36 at the 4 corners in  
Arkport 5 miles north of  
Hornell or 12 south of  
Dansville Pirrung Auc  
tioneers Inc

SAT APR 4 9 30 A M  
Public Sale of Real Estate  
Antiques Glassware and  
Household Goods  
Located at 50 south  
Soudersburg Rd in East  
Lampeter Twp., 10 miles  
east of Lancaster PA just  
¼ mile south of Rt 30  
Margaret M Wenger  
Owner Ron Funk Jeff  
Knosp and Gordon  
Ressler Auctioneers

SAT APR 4 10 30 A M  
Public Sale of Livestock  
and Farm Equipment  
Located 1 mile west of Ex  
it 15 the PA Turnpike  
Blue Mountain Exit west  
1 mile on Rt 997 to se  
cond left the Otterbein  
Church Rd 1 mile to  
farm opposite Esh s  
Store Franklin Co PA  
Sarah Esh Owner Difen  
bach Auctioneers

SAT APR 4 10 00 A M  
Public Sale of Power Farm  
Equipment Riding  
Mowers Parts Autos at  
John Deere Agency,  
North Edge of Oxford PA

US Rt 10 S Guy Cox  
Owner Whiteside Auc  
tion Service

SAT APR 4 Public Sale  
of Tractors, Trucks, Fork  
Lifts, Combine Equip  
ment Etc Located on Rt  
539 between Allentown  
and Hightstown, NJ  
Princeton Turf Farm  
Owners Richard P Allen  
Auctioneer

SAT APR 4 10 00 A M  
Public Sale of Tractors  
Equipment, Truck, Etc  
Located approx 5 miles  
on Rt 512, north of Bath,  
PA, Northampton Co., ½  
mile past Moorestown,  
turn west off Rt 512 onto  
Bushkill Dr for ½ mile,  
turn left on Scenic Dr to  
Deemer Rd William  
Romanishan Owner Kist  
Auction Co

SAT APR 4 9 30 A M  
Public Sale of Dairy Cattle  
and Heifers, Bulls, Farm  
Machinery, Etc Located  
on Asbury West Portal  
Rd from Easton, PA  
Phillipsburg, NJ take Rt  
173 (Old Rt 22) at Still  
Valley Circle for approx 6  
miles to West Portal, then  
left 2 miles From Rt 31  
take Asbury Rd Sale for

Mr & Mrs Weston  
Voorhees Arthur Hanna  
Auctioneer

MON APRIL 6, 2 P M  
Danville Livestock  
Market cattle and hog  
auction Located Old  
Route 11, Danville, PA  
Melvin M Lehman,  
owner

MON APR 6 9 30 A M  
Public Sale of Farm Equip  
ment, Feeder Cattle, Etc  
Located from Gettysburg,  
PA take Rt 116 west and  
continue just through  
Fairfield, PA and bear  
right at Y just opposite  
school or from Em-  
mitsburg, MD take Rt 97  
north to Zora, turn right  
onto Rt 116 east and con-  
tinue approx 3 miles to  
sale William M White  
Estate, C David Redding  
Auctioneer

MON APR 6 11 00 A M  
Public Consignment Sale  
of Farm Machinery  
Located in Galena, MD  
Harry Rudnick and Sons  
Inc Sale Managers and  
Auctioneers

TUES APR 7 10 00 A M  
Public Sale of Tractors,  
Trucks, Line of Farm  
Machinery and Some But  
chering items Located in  
Huntingdon Co., 1¼ miles  
NE of Shirleysburg, PA in  
Germany Valley James C  
and Zelda Love Owners  
Mark Glick Auctioneers

WED APR 8 Easter  
Lamb and Goat sale at the  
Belleville Livestock  
Market, Belleville, PA

WED APR 8 7 00 P M  
Feeder Sale at Four  
States' Hagerstown, MD

THURS APR 9 10 30  
A M Public Sale of Farm  
Equipment, located along  
Church Rd., ½ mile  
north of Robesonia, near  
the Corner Church, Berks  
Co PA Conditions by Ir  
win Mogel Paul E Bixler  
and Gerald G Kramer  
Auctioneer

THURS APR 9 7 30  
P M Public Sale of 64  
Head cows heifers and  
feeder cattle Located at  
the DE Smith Farm, ½  
mile east of Millintown  
along old Rt 22 Robert  
Campbell Owner Long  
Bros Auctioneers

THURS APR 9 6 30  
P M Bert Rose Wholesale  
Distributors held at  
Sechrist Sales Co  
Livestock Auction Arena  
Stewartstown, PA near  
New Park Sechrist Auc  
tion Service

THURS APR 9 11 00  
A M Public Sale of Real  
Estate, Farm and Orchard  
Equipment Cooler  
Truck, Car Located one  
mile north of Rt 22 and  
Cedar Crest Blvd past  
Crest Plaza at 2438 Main  
Bld Allentown PA Mrs  
Warren Kern Owner  
Ralph W Zettlemoyer  
Auction Co Inc

## V & V ZUBER MILKING HERD and BRED HEIFER DISPERSAL

**THURSDAY, APRIL 2, 1981**

At 12:30 P.M.

Chili Center, N.Y. Located ½ Mile  
north of Rt. 252, 8 miles west of Rt. 15.  
Follow Rt. 252 east from Rt. 33A, 1½  
miles east of Chili Center, at 177 Archer  
Rd. Having decided to discontinue  
dairying will sell:

72 head Holstein dairy cattle, by 40 years of  
A-I, Curtiss, and Eastern sires

60 cows average 15,791 375 test of milk  
shipped to the plant in the past 12 months.

57 cows in milk (17 first or second-calf  
heifers), 12 bred heifers, 2 open heifers, one  
calf

This is a farmer breeder herd, all bred and  
raised on this farm These are big, strong,  
good-uddered dairy cows housed in a stanchion  
barn and will be examined for pregnancy, and  
will have shipping fever inoculations.

The Zuber Brothers are exceptional care-  
takers and the herd has the size and condition  
to produce.

TERMS - Cash or good check day of sale with  
ID, nothing to be removed until settled for.

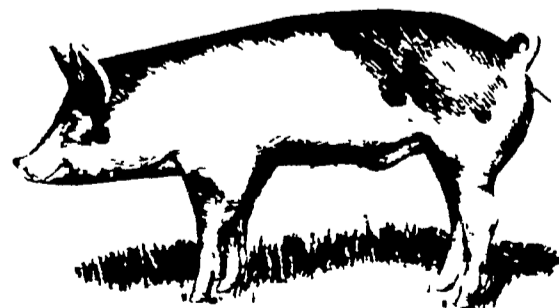
CREDIT: Available by contacting Doug  
Kendall, Genesee Country Bank, Warsaw,  
N Y, phone 716-786-3195 prior to the sale

Owner  
**ZUBER BROTHERS**  
Ph. 889-2592

**WILLIAM KENT, INC.**  
SALE MANAGER & AUCTIONEER  
Bergen, NY Ph. 716-494-1890

## SOUTH CENTRAL PENNSYLVANIA PORK PRODUCERS ASSN.

**1981  
FEEDER PIG SHOW & SALE**



**FRIDAY, APRIL 10, 1981**  
SHIPPENSBURG FAIRGROUNDS  
SHIPPENSBURG, PA.

**100  
TOP QUALITY FEEDER PIGS**  
Suitable for 4-H or FFA projects

SHOW: 3:30 P.M. SALE: 6:30 P.M.

JUDGE: Ken Kephart, State College, Pa.

For information on entries contact:  
Ken Ketterer, R.D. 2, Newville, Pa. 17241  
Phone: 717/423-6250

NOT RESPONSIBLE FOR ACCIDENTS