

312 bushels per acre

World record corn yield set

NEW BRUNSWICK, N.J. — Corn yields in the Northeast can complete with those in the big Midwest corn states, a Rutgers University researcher maintains after setting world records for corn and soybean yields in research plots.

Roy Flannery, specialist in soils at Rutgers' Cook College, and graduate student Howard Woodard proved that more than 300 bushels of corn per acre can be grown in Freehold sandy loam soil in New Jersey.

The same factors that produced 312 bushels of corn grain yielded 45.1 tons of corn silage per acre.

The researchers chose two hybrids, Agway 849X and Pioneer 3382, for their experimental plots, adding variables of plant population, fertilizer rates, and irrigating. The purpose of the

research, which is supported by a grant from the Potash & Phosphate Institute, is to get the highest yields possible; economics are not a factor.

The record yield was established on replicated plots that were irrigated, seeded with Agway 849X (40,700 plants per acre), and fertilized with the equivalent of 500 pounds of nitrogen, 300 pounds each of phosphate, and potash per acre, and with added micronutrients.

Another irrigated Agway 849X plot with 32,000 plants per acre yielded 303 bushels of corn grain and 44.3 tons of corn silage, using the same amount of fertilizer and micronutrients.

Yields like these have not yet been accomplished on replicated research plots in the Midwest,

(Turn to Page A24)

Lancaster Farming, Saturday, March 28, 1981—A17

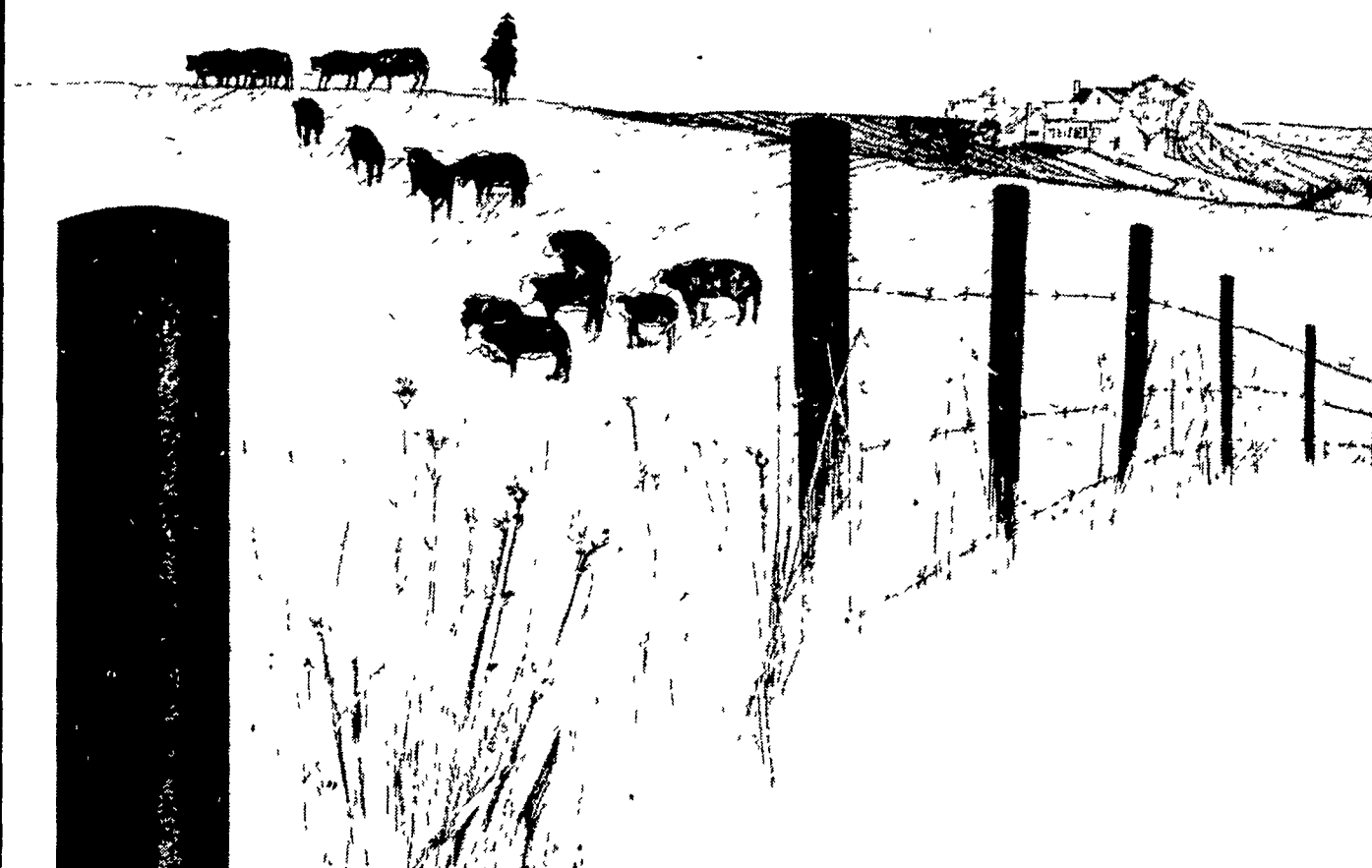


Prof. Roy Flannery, center, soils specialist at Rutgers' Cook College, receives plaque from William E. Mohn, left, Agway seed division manager, and Michael J. Papai, manager of

Agway's fertilizer division in recognition of world record corn yield of 312 bushels per acre.

CATTLE FARMERS....

BUILD YOUR LAST FENCE FIRST!



A New Breed of Fencepost Guaranteed for as long as it's in the ground!

- Lifetime Guarantee
- Perfect for Line Fencing
- Unequaled for Electric Fencing
- No Maintenance
- Longer Lasting
- More Economical
- Easy Installation
- Fewer Posts Per Mile
- Insect Proof
- Stable in All Climates
- Keeps Working in Wet, Alkaline or Acidic Soil

Perma-Post won't rot or splinter like wooden posts, won't rust or corrode like steel. Perma-Post flexes above the ground, so it won't break, uproot or lose shape. Made of durable polypropylene plastic, Perma-Posts stand up to any soil or climate condition and needs no insulators. Perma-Post, with the lifetime guarantee, outworks, outperforms, and outlives any wood or steel post.

Perma-Post

Distributed By.
NEW HOLLAND SUPPLY CO.

For more information contact
your local farm supply dealer
or call:

717-354-4001

|| OPEN HOUSE ||

Spring VALUE DAYS

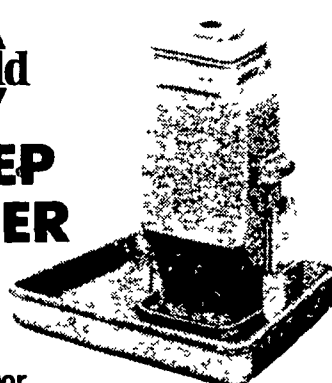
**FRIDAY & SATURDAY
APRIL 3 & 4, 1981**

See Pages D-24 & 25

EMHERR
FARM & HOME SUPPLY

Quality
Stanfield
Product

CREEP FEEDER



Includes:

- Large open feed pan to simulate floor feeding.
- Sturdy aluminum bracket for quick feeder in-and-out
- Generous 1 1/4 gallon hopper capacity.

Not just another creep feeder! A farm tested natural way to start two and three day-old pigs on solid feed. Pigs learn to eat creep feed before weaning. So you wean faster and pigs do better under less stress.



Quality
Stanfield
Product

Put Your
Pigs on a
Blanket

HEAT PADS

For Farrowing Crates And Nursery
With Stanfield Surface, Draft Barrier
Cleats, Twin Cords.



Swine Systems

FARMER BOY AG.



457 E MAIN AVE., MYERSTOWN, PA 17067
1/2 Mile East of Myerstown
717-866-7563