

Prefab parlor

(Continued from Page D16)

The other side of the structure functions as a utility room. It contains supplies, a water heater, a vacuum pump, dual refrigeration compressors and an energy conversion system.

Hafer selected the Bally prefab building for its insulating abilities. "Not only does it keep us warm, but my plumbing lines don't freeze," notes Hafer.

On Christmas day, 1980, the wind chill index in the Douglassville area fell to -17°F. Hafer reported a 67°F temperature in his parlor with no heat to supplement that

produced by animals and equipment.

"In the heat of summer we sneak into our parlor to cool off," Hafer says with a chuckle.

The Bally panels used to construct Hafer's new parlor and milk house are constructed of four inches of foamed-in-place urethane between 22-gauge steel skins.

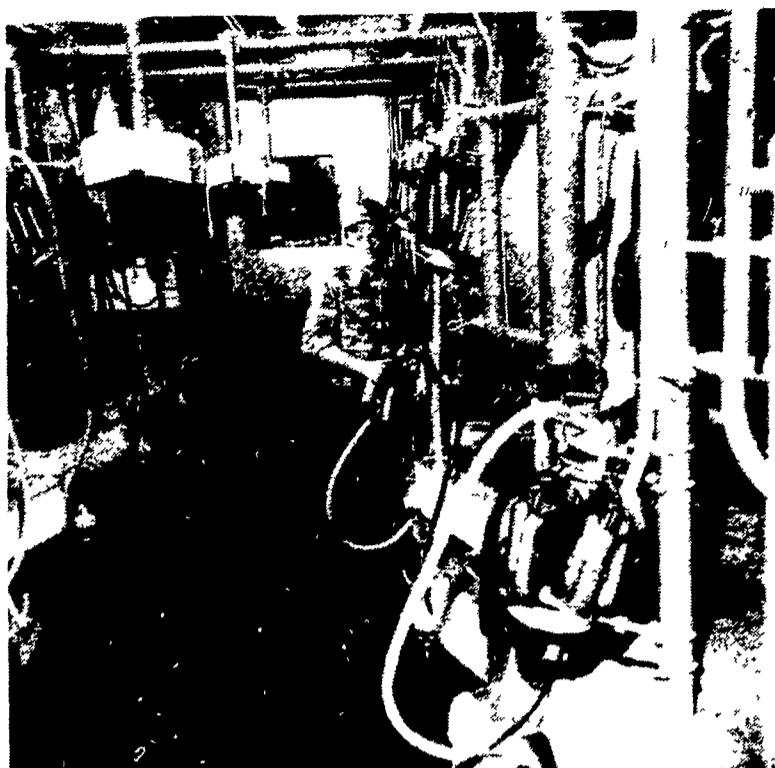
Bally urethane is one of the most energy-conserving insulations available. With an insulating efficiency rating, of "R" value, of 34, it is more than twice as effective as the same thickness of the best

commercially-available fiberglass, the company reports.

Apart from the heat generated by two refrigeration compressors located against the parlor wall in a corner of the utility room, Hafer uses the animals' respiration to keep himself and his family comfortable during milking. Hot air from the compressors is exhausted into the milking parlor through a grate measuring 34"x78".

Hafer says while the initial cost of a prefab building is slightly higher than that of a comparable block and masonry structure, the savings in energy costs alone are soon recouped.

"When you figure that you've got



Hafer is proud of the new 34'x21' parlor, which has a "double six" stall layout. His 230 Holsteins are stripped, washed and milked in the parlor, and fed their grain based on individual production.

to buy and install additional insulation with a cinderblock building, the cost for the Bally building is almost the same," according to Hafer. "So why not buy the best at the start?"

Recently, a parked tractor accidentally rolled into the building, damaging some of the panels, including the doorcap and a corner section, which was badly buckled. Replacing the corner section, the door and a window was accomplished in just 2½ hours.

"If we'd had a block building, I'm sure the damage would have been worse," Hafer says. "But the real problem would have been that it takes too long to fix a building like that. The cows have to be taken care of, and there's just no end to the problems we might have had if it had taken weeks to finish the repairs."

Bally panels are joined by steel cam-action locks which are foamed into the cores along edges during fabrication. A simple hex wrench is used to actuate the locks, which are precisely positioned to meet perfectly. When pulled together, tongue-and-groove fittings on the panel edges mesh to form tight seals, enhancing the prefab's insulation capability.

Another device which helps Hafer keep pace with rising fuel and operating costs is an energy converter. The small unit, mounted on the prefab's wall, recycles heat generated by the compressors to convert BTUs of milk heat into BTUs of water heat. The converter keeps the milk house's hot water at temperatures between 120° and 160°F, without using a bit of gas or electricity.

EASTER HAMS



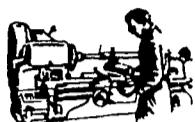
LEIDY'S PORK PRODUCTS

Look for a quality Smoked Ham (Bone or Boneless) at your local store.

"We have Hams You Will Be Proud To Receive or Give"

LEIDY'S PORK PRODUCTS

266 Cherry Ln., Souderton, PA 18964
Phone - 215-723-4606



the ENERTECH 1500

a beautiful way to save electricity

The Enertech 1500 plugs free and renewable wind energy into your household electric system

Send \$1 for our 16 page brochure with details on sites, endurance tests, tax credits and more

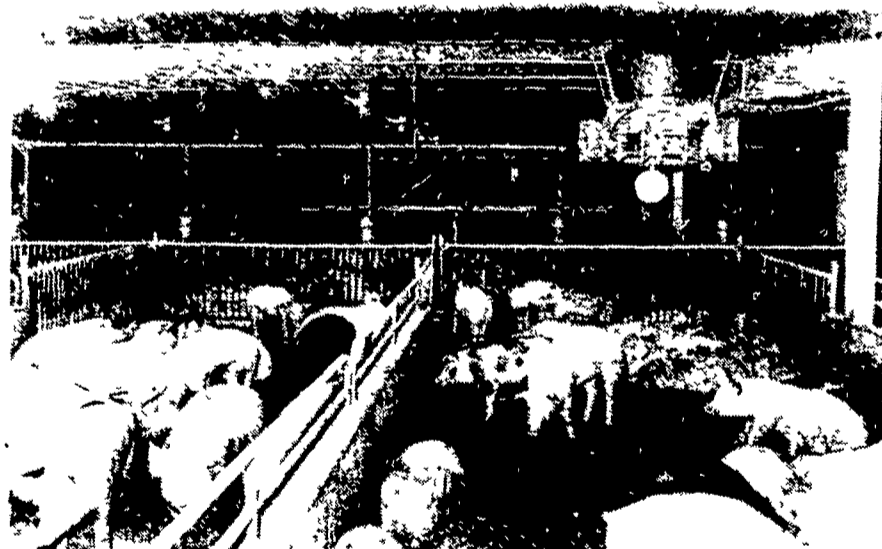


energy resource centers

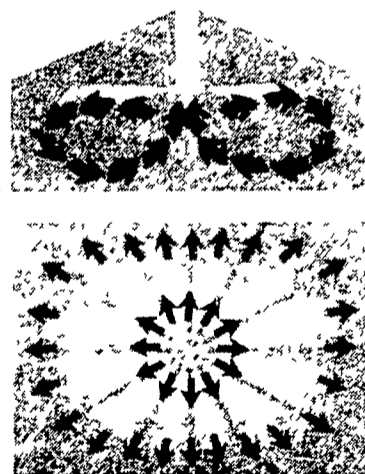
458-8011

P.O. Box 24 Urichland, Pa 15480

FRISTAMAT VENTILATION



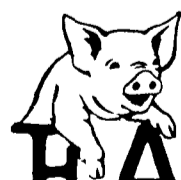
FRISTAMAT VENTILATION IN A FINISHING BARN



THE ENERGY EFFICIENT, FULLY AUTOMATIC SYSTEM FOR LIVESTOCK AND POULTRY. AIR PATTERN and MOVEMENT

This is the key to excellent ventilation. Twelve individual adjustable nozzles control air direction up and down, the length of throw and velocity. The length of throw is crucial in avoiding down drafts at the walls. The velocity ensures proper mixing of air at the ceiling level, uniform temperature and proper air motion at the livestock or poultry level. This air pattern once set never changes.

EXISTING INSTALLATIONS EXPRESS SAVINGS UP TO 90% IN ENERGY COSTS



Swine Confinement Systems

FARMER BOY AG. INC.

Best in Design, Price and Experience

457 E. MAIN AVE., MYERSTOWN, PA 17067

½ Mile East of Myerstown

Call 717-866-7565 For An Appointment or Stop By Our Office. Our Trained Staff Will Do Their Best To Assist You With Layout And Design.

★ WE SPECIALIZE IN COMPLETE SWINE SYSTEMS, BUILDINGS, FARROWING, NURSERY, FATTENING - OPEN FRONT or CONTROLLED ENVIRONMENT.