

# Livestock market and auction news

## Belknap Auction

Wednesday, March 25  
Report supplied by PDA

**CATTLE** 109. Compared with last Wednesday's market, slaughter cows steady. Couple Choice slaughter steers 60.00 and 62.00, couple Standard 49.75 and 52.00. Couple Good slaughter heifers 53.00 and 53.50, Standard 46.50-51.75. Utility & Commercial slaughter cows 42.50-46.75, couple 48.25 and 49.50, Commercial No. 4-5 37.00-42.00, Cutters 40.50-44.75, Canner & Low Cutter 35.00-41.00, Shells down to 33.00. Few Yield grade #1 and 2 1015-2040 lbs slaughter bulls 47.00-52.00. Few Medium & Large Frame #1 305-480 lbs. feeder steers 63.00-70.00; few Medium & Large Frame #1 320-475 lbs feeder heifers 54.50-61.00, 515-750 lbs. 49.50-59.50.

**CALVES** 84. Vealers steady. Couple Prime vealers 106.00 and 108.00, Choice 89.00-105.00, Good 73.00-89.00, Standard & Good 90-120 lbs. 50.00-61.00, 65-85 lbs. 40.00-50.00, few Utility 50-105 lbs. 20.00-37.00. Farm calves, holstein bulls 95-125 lbs. 60.00-78.00; holstein heifers 70-100 lbs. 67.00-86.00, one 140 lbs at 94.00; beef cross bulls & heifers 70-110 lbs 64.00-95.00.

**HOGS** 171. Barrows & gilts steady to .25 lower. US No. 1-2 205-240 lbs. barrows & gilts 41.60-42.20, No. 1-3 200-255 lbs. 41.00-41.70, No. 2-3 200-265 lbs. 39.10-40.40, few No. 1-3 180-190 lbs 35.50-37.10. Sows \$2 to \$3 higher. US No 1-3 280-645 lbs. sows 36.50-40.00, one at 42.00, few No 2-3 300-730 lbs 32.00-35.75. Boars 20.00-25.75.

**FEEDER PIGS** 124. US No. 1-2 30-40 lbs. feeder pigs 20.00-27.00 per head, No. 1-3 35-50 lbs. 18.00-29.00, few No. 1-3 70-80 lbs. 35.00-36.00, few Utility 35-45 lbs. 9.00-14.00 per head.

**SHEEP** 14. Few Choice 80-95 lbs. new crop lambs 70.50-78.00. Few Slaughter ewes 29.00-31.50.

## Ohama Cattle

Report supplied by USDA

Through midweek steers and heifers 50-1.00 higher. Cows 1.50-2.50 higher. Bulls 1.00-1.50 higher.

Four day receipts 13,800, last week 12,000 year ago 10,000.

An improved carcass trade combined with packer needs for immediate slaughter requirements to move steer and heifer prices higher through midweek. Best demand again centered on yield grade 2-3 steers weighing 1050-1200 lbs. and same grade 950-1050 lb. heifers. Some caution on the buyer's part was noted late in Wednesday's market as dressed beef prices weakened, but the remaining unsold supply of steers and heifers was insufficient to reflect any trend change.

Steers made up 49 pct of 5 day receipts, heifers 35 pct, cows 9 pct, feeders 6 pct.

**STEERS:** At midweek, five loads Choice, some Prime, mostly 3, 1100-1200 lbs. 62.00. Choice 2-4 1050-1250 lbs 60.50-61.50, several loads 61.75. Choice, some Prime, 3-4 1200-1350 lb 59.00-60.00. Mixed Good and Choice 2-3 1000-1250 lbs 59.50-60.50. Good 57.50-59.50.

Several loads mixed Good and

Choice 2-3, 1250-1350 lb Holsteins 57.00. Load Good, few standards 1150 lb. Holsteins 54.25.

**HEIFERS** Load and several part loads Choice, few Prime, mostly 3 1000-1050 lbs. 60.75-61.00. Choice 2-4 900-1150 lbs. 59.50-60.50. Mixed Good and Choice 2-3 58.00-59.50. Good 57.00-58.00.

Average of LS 214 detailed quotations for Choice 900-1100 lb steers 61.12; 1100-1300 lbs 60.90. Average cost steers this week 60.29 average weight 1189 as compared 59.34 and 1200 lbs a week ago average cost heifers 59.12, average weight 1044 as compared 58.44 and 1037 lbs a week ago.

**COWS** Cutter, Utility and Commercial 1-3 43.50-45.00, some high dressing 45.50. Canner and low-Cutter 40.50-42.50.

**BULLS:** Few 1-2 1200-1800 lbs 52.00-56.00, individual 1.58.00.

**FEEDER CATTLE** Near 200 head medium frame 1 steers in Good and Choice slaughter flesh 1050-1150 lbs 60.00-61.50.

## G&M Livestock

Monday, March 23

Report supplied by auction

Compared to last week, market

report steers steady, cows strong, hogs steady.

**STEERS:** High Choice and Prime 59.00-62.25; Good to Choice 57.00-59.00; Standard to Good 54.00-57.00, Utility 48.00-54.00.

**HEIFERS:** Good to Choice 56.00-58.00; Utility 50.00-56.00.

**FEEDERSTEERS:** Good to Choice 300-500 lbs. 55.00-70.00.

**BULLS:** 1200-1620 lbs. 52.00-58.00; 900-1200 lbs. 48.00-55.00.

**COWS:** High Choice to Prime 44.00-47.00, couple to 51.00; Good 42.00-44.00; Utility 40.00-42.00; Cutters 38.00-40.00; Canners Down to 36.25.

**CALVES:** Good to Choice 85.00-99.00; Standard to Good 60.00-85.00.

**FARM CALVES** Hol Bulls 80.00-99.00; Hol. Heifers 110.00-147.00.

**FEEDER PIGS.** 15-30 lbs. 12.00-18.00; 50 lbs. 28.00-39.00.

**HOGS.** 200-240 lbs. 36.00-39.50; 170-280 lbs. 35.00-39.50.

**SOWS:** 33.00-37.50.

**BOARS:** 26.00-32.00.

**LAMBS:** 47.00-76.00; Spring Lambs to 100.00.

**SHEEP:** 20.00-37.00.

## Sechrist Auction

Stewartstown, Pa.

Monday, March 23

Report supplied by auction

**CATTLE** 64. Steers High Choice and Prime 62.00-63.50; Good Choice 60.00-62.00; Holsteins Good 55.00-60.50; Standard to Good 52.00-54.85. Heifers - Holsteins Good 48.00-52.00. Feeder Steers Good and Choice 65.00-75.00; Standard Good 55.00-65.00; Utility 45.00-54.50. Cows High Yearling Commercial 44.00-46.85; Cutters 42.00-44.00; Canners Low Cutters 40.00-42.00; Shells 35.00-40.00.

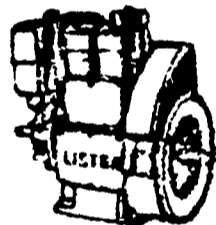
**CALVES** 76. Calves - Choice and Prime 90.00-105.00; Good and Choice 80.00-90.00; Standard and Good 65.00-79.00; Bulls Good 100-120 lbs. 60.00-85.00, Hfrs. 90-110 lbs. 60.00-125.00; Culls 40.00-60.00.

**HOGS** 207. Hogs - U.S. No. 1 and 2, 190-220 lbs. 40.0-40.50; U.S. No. 1 and 3, 190-240 lbs. 39.25-39.75; U.S. No. 1 and 3, 180-250 lbs. 38.50-39.00. Sows 250-375 lbs 30.00-33.50; 400-500 lbs. 33.60-35.85. Boars 300-500 lbs. 30.00-32.50.

**SHEEP** 26. Lambs - Good to Choice 60-80 lbs 80.00-92.00; Good 50-65 lbs. 75.00-95.00. Ewes 15.00-22.50.

## SMUCKER'S SALES SERVICE, INC.

RD #2, BOX 21  
NEW HOLLAND, PA 17557



DISTRIBUTOR  
FOR:  
**LISTER, PERKINS  
& DEUTZ DIESELS**



2 Cyl F2L-912

We Have SR2 12 h.p. Lister Diesels, as is or rebuilt.

- Good used diesel engines
- New Sputnik wheels and parts

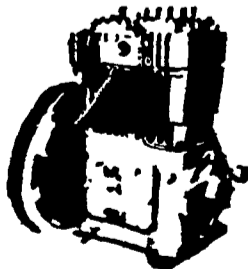
We mount diesels on balers, crimpers, cornpickers, etc.

Install a blower fan  
for better diesel &  
refrigeration cooling.  
Longer life on diesel.



DEALER FOR  
QUINCY AIR  
COMPRESSORS

For lower cost per  
hour power, rely on



DEALER FOR LISTER DIESELS  
Contact Tim's Diesel Service  
Star Rt. 2 Rebersburg, PA

FOR PROMPT SERVICE CALL  
717-354-4158 OR IF NO ANSWER  
CALL 717-354-4374

## Plant



WITH  
**MPR**

\*MULTIPLE PEST  
RESISTANCE



Alfred Dugan of Milton Hershey School Farms reserve champion in the 1980 Alfalfa Growers Program receives congratulations from Dr A A Hanson director of research for Waterman Loomis Co

# WL 311

IN 1980 THE MILTON HERSHEY SCHOOL FARMS won the grand champion hay crop silage award and reserve grand champion alfalfa growing contest. In 1979 Daniel Schrack broke the 9 ton barrier for the first time in Pennsylvania by producing 9.1 tons with WL 311 — a CONSISTENT WINNER.

# WL 313 - WL 318 - WL 220

## BEACHLEY-HARDY

Field and Grass Seeds  
Shiremanstown, Pa. 17091

BEACHLEY-HARDY SEED CO.  
Railroad Ave., Shiremanstown, Pa. 17091

Please send more information on  
these alfalfa varieties   
Send Name of My Nearest Dealer

NAME \_\_\_\_\_  
ADDRESS \_\_\_\_\_  
TOWN \_\_\_\_\_ STATE \_\_\_\_\_ ZIP \_\_\_\_\_