

Annual Md. Shorthorn meeting tonight

FREDERICK, Md. — James W. Shirley, executive secretary-treasurer of the American Shorthorn Association, will be the featured speaker at the Annual Dinner Meeting of the Maryland Shorthorn Association, Inc., on Saturday, March 21.

The meeting will be held here at Watson's Family Restaurant, beginning at 6:15 p.m. It is open to everyone interested in Shorthorns or in the beef cattle business as a whole.

Shirley assumed his duties as national Shorthorn secretary January 1, 1980, following the retirement of C.D. "Pete" Swaffar, who held the post for 25 years.

Before coming to the Shorthorn

Association, Shirley had been an area coordinator for the American Polled Hereford Association for 8 years, covering the states of Montana, North and South Dakota, and Minnesota, with additional duties in the Canadian provinces of Manitoba and Saskatchewan. He was responsible for the organization of educational workshops, livestock shows, junior events, breed promotion, and advertising.

A native of southwest Iowa, Shirley is a graduate in animal science of Oklahoma State University at Stillwater, where he was a member of Alpha Zeta honorary fraternity, Block and Bridle Club, and a collegiate livestock judging team. He was a

veterinary technician with a biosensor research team during his two-year service with the U.S. Army.

The dinner is the occasion also of the annual business meetings of the Maryland Shorthorn Association, Inc., and of the Maryland Junior Shorthorn Association Officers of both

organizations will be elected.

Current officers are: Henry L. Dodrer, Jr., Littlestown, president; Duane Harper, Gathersburg, Md., vice president; and Dr. Wayne Neely, Frederick, Md., secretary-treasurer. Junior officers are Dennis Warfield, Woodbine, Md., president; Susan

Dodrer, Littlestown, vice president; and Patty Bowman, West Friendship, Md., secretary-treasurer.

All interested persons are urged to attend the dinner. The cost is \$6.25 a person, and reservations can be made by calling 301/663-6753.

District court upholds loss of inspection

NORWICH, Ct. — The U.S. District Court, District of Connecticut, has upheld an earlier U.S. Department of Agriculture ruling which ordered the indefinite withdrawal of Federal meat inspection service from Norwich Beef Co., Inc., Norwich, Conn.,

unless certain conditions concerning a firm official were met.

The firm, a meat boning and processing plant, cannot operate without Federal inspection.

Under the earlier USDA ruling, Norwich would lose inspection service unless Alan Roessler, president and treasurer of the firm, relinquishes all managerial direction and control within 90 days and sells all of his stock within one year.

Donald L. Houston, Administrator of USDA's Food Safety and Quality Service, said the initial action by USDA against Norwich was based upon Roessler's felony conviction in 1971 of first degree larceny of receipt and distribution of stolen beef and a related 1975 misdemeanor.

Houston explained that the firm may further appear the District Court decision.

Red Lion Young farmers meet

RED LION — The Red Lion Area Young Farmers held their annual banquet last Friday night at St. John's United Church of Christ.

At total of 182 members and guests attended the session.

Featured speaker was Mike Ondik, director of deer research at Penn State. Ondik presented a program on wildlife and wildlife management.

York County Agent John T. Smith addressed the banquet with a few comments.

In addition the members of the Red Lion Young Farmers planned several other activities.

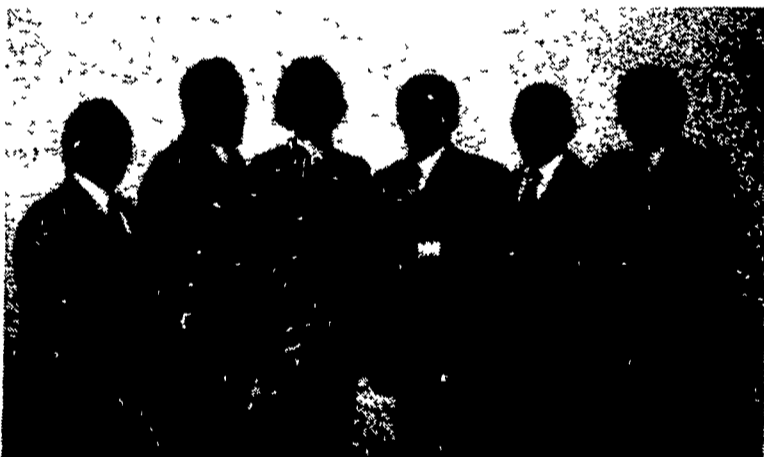
There will be a class Monday, March 23 on the economics of

cattle feeding and the grain market. Featured speaker will be Roland Freund, extension farm management specialist.

On March 30 the group will have a session on crop fertility and herbicide use. Guest speakers will be Morgan Price and Harold Mengel from Agway, Inc.

Both of the meetings will be held in the Vo-ag Department of Red Lion Area Senior High School starting at 8 p.m.

In addition, an estimated 20 members of the Young Farmer organization will start CPR (cardio-pulmonary resuscitation) classes working for a certificate and knowledge in reviving heart attack victims.



Officers of the Red Lion Young Farmers, from left, are, Lester Holtzinger, President; Jack DeHoff, Vice President; Doug Kilgore, Secretary; Thomas Brant, treasurer was absent. Also shown is speaker Mike Ondik; Marlin Barshinger, Public Relations; and John G. Myers, Adviser.

GOOD YEAR PLANTING TIME!



OUR BEST SELLING REAR FARM TIRE

\$170⁹⁵

Size 14.9x24, 4 Ply Rating Plus \$5 22 FET and reusable trade

Traction Torque

- Every lug bites deep
- Rugged durable nylon cord body
- Buttressed lugs get wider as they wear

Size	Ply Rating	PRICE	Plus FET and re-usable trade
14.9x28	4	\$186 ⁴⁰	5.84
18.4x34	6	\$348 ⁴⁰	10.58
15.5x38	6	\$277 ⁷⁰	7.63
20.8x38	8	\$610 ⁰⁰	16.21

THIS REAR TRACTOR RADIAL SAVES \$\$\$ AND MAKES SENSE!

Ultra Grip Radial

This is Goodyear's finest rear tractor tire. You'll find it saves you time in the field and money on fuel. Compared with one of our own bias-ply tires you get:

- More Grip Less Slip
- Better Gas Economy
- More Efficient Traction
- A Smooth Cushioned Ride



TRACTOR FRONT TIRES

\$32⁴⁰

Size 500x15 4 ply rating Plus 69 FET and old tire

Triple Rib R/S

- Shock absorbing nylon cord body
- Easy steering three-rib tread
- Low low prices

\$78⁵⁰

Size 41Lx15 6 ply rating plus \$2.48 FET and old tire

\$58⁴⁰

Size 750x16 6 ply rating Plus \$1.51 FET and old tire

PRICES SHOWN ARE GOODYEAR SUGGESTED RETAIL PRICES. SEE ANY OF THE INDEPENDENT DEALERS LISTED BELOW FOR HIS PRICE AND CREDIT TERMS



On-The-Farm-Tire Service For Service In A Hurry. CALL YOUR IMPLEMENT DEALER

BUCK

Wenger Implement Co
Ph 284-4141

ELM

Shotzberger's Farm Machinery
Ph 665-2141

INTERCOURSE

C B Hooper & Son
Ph 768-8231

LANCASTER

L H Brubaker, Inc
Ph 397-5179

P Lebzelter & Son
Ph 299-3794

MECHANICS GROVE

Grumelli Farm Service
Ph 786-7318

MOUNTVILLE

R S Hollinger & Son
Ph 285-4538

Goodyear Tires Distributed by P. Lebzelter & Son Co., Lancaster

FETTERVILLE SALES

RD 2 Box 267
East Earl, PA 17519



- ★ AGRICULTURAL WHEELING CHANNELDRAIN ROOFING & SIDING
- ★ Colors In Stock: Brown, Red, White, Green and Plain Galvanized
- ★ Aluminum Also In Stock - Mill finish and White
- ★ We Also Have Insulation & Spouting