

Livestock market and auction news

Lancaster Market

Monday, March 16
Report supplied by USDA
Cattle Calves Hogs Sheep

Today	871	105	933	127
Last Monday	1102	66	1345	287
Last Year	853	103	1151	546
Monday's Auction	881	109	903	121
Last Monday's Auction	1130	66	1287	287

CATTLE: Compared to last Wednesday slaughter steers and heifers 50-150 lower, mostly 1.00 lower; cows unevenly steady to 150 lower, decline mostly on Utility 2-3; bullocks 100-3.00 higher, bulls 100-2.00 higher

SLAUGHTER STEERS: Choice and Prime 4 1250-1400 lb. 61.00-62.10; Choice 2-4 1000-1350 lb. 60.00-61.50, low 62.00-62.35; high Good and low Choice 2-3 58.00-61.00; Good 2-3 57.00-58.50, few head Good 1 selected for retail outlets 62.75-63.60; Holsteins Good 2 1250-1350 lb 53.50-54.75; Standard 1-2 50.00-52.50

SLAUGHTER HEIFERS: Choice 2-4 850-1050 lb. 57.00-60.00, mostly 58.00-58.50, few heiferettes 53.75-55.50

COWS: Utility 1-2 42.50-45.50, few 46.00-47.25, some grade 2-3 40.75-43.00; Cutter 1-2 41.75-43.50; Canner and Cutter few 39.50-41.25

BULLOCKS: Choice 1-2 1000-1400 lb. 59.50-61.75; Good 1-2 55.00-60.00

BULLS: Yield grade 1 1100-1600 lb 54.10-58.50, couple 1375-1780 lb 62.25-64.10

VEAL CALVES: Choice and Prime vealers steady with last Monday; high Good and low Choice generally steady with last Monday

VEALERS: 29 head Prime special fed 285-340 lb. 115.00-120.00, mostly 118.00; Choice and Prime 160-240 lb. 100.00-112.00; high Good and low Choice 100-120 lb. 60.00-80.00, 65-80 lb. 40.00-60.00

RETURNED TO FARM: Holstein bulls 100-110 lb 85.00-95.00

SHEEP: No comparison with last Wednesday

WOOLED LAMBS: Choice 110-130 lbs. 55.00-65.00

SPRING LAMBS: Choice 70-90 lb. 68.50-75.00

SLAUGHTER EWES: Few Utility 25.00-37.00



Vintage Market

Tuesday, March 17
Report supplied by USDA
Cattle Calves Sheep Goats

Today	1082	694	24	7
Last Tuesday	1397	757	15	4
Last Year	1072	636	13	0

CATTLE: Compared to last Tuesday slaughter steers weak to 1.00 lower, late sales 1.50-2.00 lower; trend unestablished on slaughter heifers; slaughter cows 1.50 to mostly 2.00 lower; trend unestablished on slaughter bulls

SLAUGHTER STEERS: Choice and Prime 3-4 1150-1300 lb 63.00-65.10, late 62.00-63.50, Choice 2-4 1000-1300 lb. 61.00-63.00, late 60.00-62.00, few 1300-1500 lb 59.25-61.75; mixed Good and Choice 2-4 59.00-61.50; Good 1-3 57.00-59.50, several Good 1-2 for retail outlets 63.00-65.50, Holstein Good and Choice 1-2 1200-1400 lb 52.75-53.85, several Choice 2 1250-1400 lb. Holstein Crossbreds 56.50-58.00

SLAUGHTER HEIFERS: Few Choice 2-3 950-1100 lb. 57.25-59.50, few heiferettes 52.00-53.75

COWS: Utility 1-2 41.00-44.00, higher dressing 44.50-45.75; Cutter and low dressing Utility 1-2 40.00-43.00; Canner and low Cutter 36.00-40.00

BULLS: Few head yield grade 1 1400-2000 lb. 54.35-56.75, individual 1665 lb. 57.75

VEAL CALVES: Vealers 2.00-4.00 lower Supply included 486 in graded sale of which 66% sold to return to farm

VEALERS: Choice 180-250 lb 96.00-110.00; high Good and low Choice 125-230 lb. 70.00-85.00, 100-115 lb. 50.00-58.50, 70-85 lb 35.00-43.00

SLAUGHTER CALVES: Few Choice 250-400 lb 58.00-82.00

RETURNED TO FARM: 58 head 100-120 lb Holstein heifers 147.50-170.00; 20 head 90-100 lb. 115.00-136.00. Holstein bulls 185 head 100-125 lb 88.00-92.00; 32 head 90-95 lb. 63.00

SLAUGHTER LAMBS: Few head Choice 95-105 lb woolled 60.00-65.00

Lancaster Auction

Wednesday, March 18
Report supplied by USDA
Cattle Calves Hogs Sheep

Today	712	41	1049	4
Last Wednesday	801	12	805	0

Last Year

541	37	942	4
-----	----	-----	---

Wednesday's Auction

517	41	1055	4
-----	----	------	---

Last Wednesday's Auction

787	12	811	0
-----	----	-----	---

CATTLE: Compared to Monday slaughter steers generally steady; bullocks 2.00 lower on limited test; not enough any other class to establish trends

SLAUGHTER STEERS: Few Choice and Prime 4 1250-1400 lb. 62.00-63.10; Choice 2-4 1000-1350 lb. 59.50-61.50, mostly 60.00-61.00; Good and Choice 2-3 58.50-60.50, Good 2-3 57.50-60.00; Holsteins mostly Good 2 1200-1350 lb. 52.60-53.75

SLAUGHTER HEIFERS: Few head Choice 3 950-1100 lb. 58.00-60.00, couple 62.00-62.50

COWS: Utility 1-2 41.25-44.00, few high dressing 44.50-46.00; Cutter 1-2 few head 39.00-41.75

BULLOCKS: Several Choice 1-2 1200-1300 lb. 56.75-59.00, couple 61.00-62.25; Good 1-2 53.00-57.00

BULLS: Yield grade 1 1200-1800 lb 54.50-57.50, individual 1660 lb 61.25, individual 2500 lb. 54.35

VEAL CALVES: Not enough to establish a market

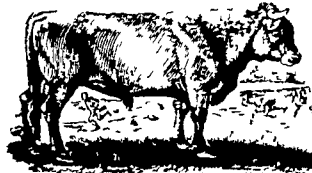
SHEEP: Not enough to establish a market

NEW HOLLAND LIVESTOCK
Thursday, March 19
Report supplied by USDA
Cattle Calves Sheep Goats

Today	1121	489	26	4
Last Thurs	1257	509	16	4
Last Year	1198	558	50	34

CATTLE: Compared to last Thursday slaughter steers generally steady; slaughter heifers on a limited test steady to firm; slaughter cows opened .50-1.00 lower, late sales 1.50-2.00 lower; bulls and bullocks steady with last week's light supply. Supply included 53% slaughter steers, 8% slaughter heifers and 23% cows

SLAUGHTER STEERS: High Choice and Prime 3-5 1200-1350 lb 62.00-63.75, few 64.25-64.85, few same grade mostly 4 1300-1450 lb 62.00-63.25; Choice 2-4 1000-1300 lb



61.50-63.50; mixed Good and Choice 2-4 59.50-61.50; Good 2-3 57.25-60.50, few Good 1-2 1050-1200 lb. for retail outlets 64.25-65.75; mostly Good 2 1200-1350 lb. Holsteins 52.00-53.60, several Standard 1-2 1300-1500 lb. Holsteins 45.50-47.35; few lots feeder steers Medium 1 700-840 lb. 61.85-62.60

SLAUGHTER HEIFERS: Few Choice 2-4 900-1100 lbs. 58.00-61.00, few yield grade 2 61.60-62.25; couple lots Good 2 750-850 lbs 51.00-52.75

SLAUGHTER COWS: Utility 1-2 42.00-44.75, late mostly 41.00-43.00, higher dressing 45.50-46.50, several Utility 2-3 showing excessive fills 38.00-41.00; Cutter 1-2 40.00-43.00, Canner and low dressing Cutter 38.00-41.00; Canner 35.00-38.00

BULLOCKS: Good 1-2 1200-1350 lb. 52.00-55.75

BULLS: Few yield grade 1 1400-1800 lb. 54.25-57.50, couple 1550-1575 lb. 64.25-64.50, individual 2140 lb. 60.25

VEAL CALVES: Vealers' generally steady, Prime not well tested

VEALERS: Choice 150-300 lb. 98.00-109.00, few 113.00-125.00; high Good and low Choice 120-350 lb. 72.00-98.00, 110-125 lb. 59.00-70.00, 90-105 lb. 45.00-60.00, few 60-85 lb 40.00-54.00

RETURNED TO FARM: Holstein heifers 90-115 lb. 80.00-100.00, few 115.00-135.00. Holstein bulls 85-110 lb 67.00-92.00, few 94.00-97.00; few 75-90 lb. 65.00-80.00

SHEEP: Not enough to establish trend

SPRING LAMBS: Few Choice 55-80 lb. 68.00-72.00

RETURNED TO FARM: Holstein heifers 90-115 lb 80.00-100.00, 50 head 147.50-170.00; Holstein bulls 85-110 lb 75.00-95.00

SLAUGHTER HEIFERS: Steady to 1.00 lower, instances 2.00 lower, slaughter heifers steady to 1.00 lower; cows 1.00-2.00 lower; bullocks firm to 1.00 higher, bulls steady on light supply. Supply

included 51% steers, 16% cows, 6% heifers, 6% bulls and bullocks. This week's supply included a large percentage of high Choice and Prime 3 to mostly 4 1250-1350 lb steers. Demand was good for steers capable of producing 800-900 lb. carcasses due to the dressed beef prices. Slaughter cows grading Utility 2-3 sold under price pressure due to buyers selecting for yield grade 1-2 carcasses

SLAUGHTER STEERS: High Choice and Prime 3-4 1200-1400 lb. 61.00-63.50, some early 64.00-65.00; Choice 2-4 1000-1350 lb. 60.00-63.00, mostly 61.00-63.00; mixed good and Choice 2-4 58.00-61.00; Good 2-3 57.00-60.00; Holsteins few Choice 2 1200-1400 lb 55.00-57.50; Good 1-2 1150-1350 lb. 52.50-55.00; several Standard 1-2 1300-1500 lb. 45.50-47.35

SLAUGHTER HEIFERS: Choice 2-4 850-1100 lb 58.00-60.00, few 61.00-62.50

COWS: Utility 1-2 41.00-44.00, higher dressing 45.50-47.00; Cutter 1-2 40.00-43.00; Canner and low Cutter 1-2 38.00-41.00; Canner 35.00-38.00

BULLOCKS: Choice 1-2 1000-1400 lb. 57.00-60.00, few 61.00-62.25; Good 1-2 53.00-57.00

BULLS: Yield grade 1 1200-2000 lb. 54.00-58.00, few 61.00-64.25

VEAL CALVES: Vealers steady to 4.00 lower

VEALERS: Few Prime 285-340 lb. 115.00-120.00; Choice 150-300 lb 96.00-110.00; high Good and low Choice 125-250 lb. 70.00-85.00, 100-125 lb. 59.00-80.00, 90-105 lb. 45.00-60.00, 60-85 lb. 40.00-55.00

RETURNED TO FARM: Holstein heifers 90-115 lb 80.00-100.00, 50 head 147.50-170.00; Holstein bulls 85-110 lb 75.00-95.00



HAY, STRAW & CORN — SALE —

Every Friday at 12 Noon

GREEN DRAGON MARKET & AUCTION

RD No. 4 Ephrata, Pa. 717-733-2334
1 mile North of Ephrata on N. State St.
Out of State Buyers Cash or Certified Check Only

NEW HOLLAND The Action Auction

AUCTIONS make the difference in auctions!

NEW HOLLAND makes the difference in marketing livestock!

MONDAY'S AUCTION
8:00 A.M. Fat Hogs
10:00 A.M. Horse Sale
11:00 A.M. Hay, Straw & Ear Corn
1:30 P.M. Fat Steers, Bulls, Cows & Veal

WEDNESDAY'S AUCTION
12:00 Noon Dairy Sale
1:30 P.M. Feeder Pig Sale

THURSDAY'S AUCTION
11:00 A.M. Beef Sale
Order of Sale: Bulls, Fat Steers, Cows, Veal
3:30 P.M. Calf Sale

NEW HOLLAND SALES STABLES INC.

New Holland PA
Abram W. Dillenbach, Manager
Phone 717 354 4341

B&R CATTLE CO.

RD1, Marietta, PA 17547

Office Phone: (717) 653-8164

Specializing In Stockers & Feeders

JOHN BOWMAN

Ph (717) 653-5728

RON RANCK

Ph (717) 656-9849

LEBANON VALLEY LIVESTOCK MARKET, INC.

1 mile East of Fredericksburg along Route 22

PHONE:

JONESTOWN 865-2881

Sale every Tuesday at 1:30 P.M. starting with feeder cattle and pigs

Also Hay Sale every Tuesday at 12:30



LANCASTER STOCKYARDS WEEKLY SALES

SLAUGHTER SALES — MON. & WED. 10:00 A.M.
VEALERS, LAMBS, HOGS — MON. & WED. 11:00 A.M.
HOG AUCTION — SATURDAY 9:30 A.M.
STOCKER & FEEDER — FRIDAY 11:00 A.M.

NEXT FEEDER PIG SALE - MARCH 24

EQUIPPED TO RECEIVE YOUR LIVESTOCK 24 HOURS A DAY, 365 DAYS A YEAR.
PRIVATE TREATY DAILY
LANCASTER STOCKYARDS, INC.
(717) 394-2611



Vintage Sales Stables, Inc.

BULLS, STEERS, BUTCHER COWS, LAMBS AND VEAL CALVES SOLD ON COMMISSION

SALE EVERY TUESDAY - 11 A.M.

HOG SALES

WEEKLY: WED. & SAT. - 9 A.M.

EVERY THURSDAY — 12:30 P.M.

HAY & STRAW & GRAIN SALE

Get calves in early. We start to grade & weigh at 2:30

FOR MARKETING INFORMATION
PHONE 717-768-8204

HOME PHONE 215-458-5060

L. ROBERT FRAME, MANAGER

Box 100 Paradise, PA
10 miles East of Lancaster on Rt. 30