

Public Sales Register

Closing Date - Monday, 5 00 P M
of each week's publication

SAT APR 11 10 00 A M
Public Sale of Farm Equip-
ment, Tools, Pumps, Anti-
ques and Collectibles
Located 35 miles north of
Harrisburg, 1 1/2 mile
north of Berrysburg, 2nd
farm west of Rt 225 along
Mountain Rd south of
Kolva's Sawmill, Thomas
W Pope and Bettie Pope
owners George & Mike
Deibert Auctioneers

SAT APR 11 10 00 A M
Public Sale of Farm
Machinery, Tools, Anti-
ques, Household Located
from US Rt 15 north of
Gettysburg take Rt 394
exit, follow Rt 394 east
through Hunterstown
toward New Chester,
Farm located (1 mile west
of New Chester or 3 1/2
miles east of
Hunterstown) David and

Helen Myers Owners C
David Redding Auc-
tioneer

APR 11 10 00 A M
Public Sale of 4 1/2 Acre
Farmette, Household
Goods and Silver Dollars
Located 3 miles from
Hinkletown off Rt 322
along Lancaster Ave in
the village of Martindale
RD 3 Ephrata, PA Mrs
Walter W Weaver,
Owner Paul K Landis
and Roy Good Jr, Auc-
tioneers

SAT APR 11 9 30 A M
Neely Ford Garage Auc-
tion, Ottsville, Bucks Co
PA Rodman Geyer Auc-
tioneer

MON APR 13 3 00 P M
Easter Lamb Sale G M
Livestock Mkt Inc Dun-
cansville, PA

MON APRIL 13, 2 P M
Danville Livestock
Market cattle and hog
auction Located Old
Route 11, Danville, PA
Melvin M Lehman,
owner

MON APR 13 12 00
P M Public Sale of 108
acre Lehigh Co Farm,
Located 20 miles west of
Allentown between Rt
100 and Kempton, just
south of Kistler Valley Rd
along Rt 863, Lunn Twp
Lehigh Co, PA Sale by
Nevin D and Estella C

Fister Conducted by
Ralph W Zettlemoyer
Auction Co, Inc

TUES APR 14 12 00
P M Public Sale of
Farmette, Located 4 miles
west of Fogelsville, 1/2 mile
east of New Smithville exit
Rt 22 and Rt 863 (one
block south off old Rt 22
along Klines Mill Rd,
Weisenberg Twp, Lehigh
Co, PA Marlyn C and
Alice L Stroh Owners
Ralph W Zettlemoyer
Auction Co, Inc

WED APR 15 9 A M
Consignment Sale by
David H Good located 1/2
mile North of Route 23 on
North Maple Ave in
Leola, Lancaster Co, Pa

Watch for sale signs F
Snyder, R Martin, C
Wolgemuth, J Fry and L
Horst, Auctioneer

WED APR 15 - 10 00
A M Public Sale of Anti-
ques, Collectibles, Glass,
China, Misc Items and
Furniture Located at
Lykens Valley Shop and
Play Hall Rt 209 Lykens,
PA Willis Lebo Owner
Lee Dockey Auc

WED APR 15 Inventory
Reduction Auction to be
held at LaRoche Farm
Equipment, Highgate
Center, NY Sale Managed
by Goodrich Auction Ser-
vice

THURS APR 16 - Monthly
Cow Sale at the Melvin
Kolb, Inc Sales Barn,
11342 Cragerstown Rd,
Woodsboro, Md 21798
Thomas Miller, Sales
Manager, Robert Mullen
dore, Auctioneer

THURS APR 16 - 9 00
A M Public Sale of Real
Estate, Antiques,
Household Furnishings,
Car and Guns Located
midway between East
Berlin and Dillsburg on
US Rt 194, thence turn
east at Davidsburg Rd, 1
mile at V take Pine Rdge
Rd, 500 ft in Washington
Twp, York Co, PA John
H Leathery Owner Clair

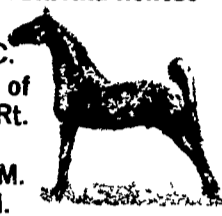
NOTICE

CHANGE OF TIME FRIDAY EVE., APRIL 10

6:30 Tack - 7:00 Horses
Horses Hitched 12:00 Noon
SPECIAL HORSE SALE

DRAFT HORSES, MULES & DRIVING HORSES

AT NEW HOLLAND
SALES STABLES, INC.
12 Miles East of
Lancaster, Pa. just off Rt.
23, New Holland, Pa.
Horse Sale at 10:00 A.M.
Tack Sale at 9:00 A.M.



2 Load Draft Horses, Mules and Driving Horses
consigned by Ward Wright

1 Load Draft Horses and Mules consigned by
Norman Kolb.

1 Load Draft Horses and Mules consigned by
John King.

1 Load Draft Horses consigned by Christian L.
Smucker.

1 Load Driving Horses consigned by Jonas
Beiler

1 Load Driving Horses consigned by Don
Boring.

1 Load Standardbred Driving Horses consigned
by Clayton Waterbury.

1 Load Standardbred Driving Horses consigned
by Reuben G. Stoltzfus.

1 Load Driving Horses consigned by Ben King.

Plus many more consignments.

For more information contact:

Abe Diefenbach, Mgr. Norman Kolb

717-354-4341 717-397-5538

Next Horse Sale Fri. Eve., April 24, 1981

PUBLIC AUCTION FARM MACHINERY - TRUCK, MILKING EQUIPMENT SATURDAY, MARCH 28, 1981 10:00 A.M.

Mr. Kurt Schubert, Ketcham Rd.,
Hackettstown, NJ. From Hackettstown
take Rt. 46 West for 2 miles, turn right
onto Ketcham Rd., follow auction arrows
to sale site.

1948 Chevrolet 2 ton rack body truck (35,000
miles), JD 435 diesel tractor w/wide front &
live PTO, JD 3 bottom 14" 3 pt. plow, 4 bottom
14" pull behind plow & 12' spring tooth harrow,
Brillion 9' double cultipacker, JD 246 2-row 3 pt.
hitch corn planter, JD 13 disc grain drill, Lely 3
pt. hitch cedar spreader, NH 66 PTO baler, JD
14T baler, Int. 115 balance drive side mount
chopper (540 PTO RPM), JD heavy duty farm
wagon w/brakes, 32' bale elevator w/loader,
Mulky 24' corn & hay elevator, JD & Papec
hammermills, Papec ensilage chopper blower,
JD side dresser, 2 feed carts, Clay barn cleaner
w/200' of good chain, stock water trough, pair
of Stewart cow clippers, fence stretcher, 1/2 ton
chain hoist plus miscellaneous items.

MILKING EQUIPMENT

Sunset 420 gal. bulk tank, DeLaval dumping
station, Universal 2 unit milker, 50 gal. electric
hot water heater, stainless double wash vats.
Sale rain or shine

Terms - Cash or good check

Owner

KURT SCHUBERT

201-637-4878

Col. John P. Kachmar Auctioneer

Flemington, NJ

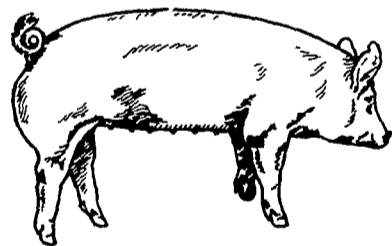
201-782-4271

CALVIN H. LAZARUS & SONS

8TH Production Hog Sale SATURDAY, MARCH 28

1:00 P.M.

ON OUR OWN FARM
DUROC - YORKSHIRE - SPOTTED - CROSSES



Selling 70 bred gilts
30 boars
40 open gilts

Sale held at the farm of Calvin H. Lazarus & Sons, 4290
Bridge St., White Hall, PA. Lehigh Co. 4 miles north of Allen-
town on Rt. 145, to Columbia St., make left 2nd black top to
right. 1st farm on left.

FLASH—

We were pleased to exhibit the champion and reserve
champion Yorkshire bred gilt at the 1981 Farm Show. Also the
Champion Bred Gilt over all breeds (a Yorkshire). The top
selling and record breaking boar (also a Yorkshire) at the 1981
Keystone Classic.

6 pig guarantee on bred gilts. All stock guaranteed to be
breeders. Brucellosis free herd #26, Pseudorabies free herd
#18.

For Catalogs Write or Call

DONNA LAZARUS

4290 Bridge St.

White Hall, PA 18052

Ralph W. Zettlemoyer Auction Co.

**DOOR PRIZE - Open Gilt
And Other Prizes**

MCCARTY'S FARM MACHINERY SALE

RETIRING AFTER 35 YEARS OF BUSINESS

Located at the intersection of Rte. 147 and Rt. 54, 14 miles
north of Milton, Pa., take Exit 31 north off Rte. 80, 16 miles south
of Williamsport, Pa., take Rte. 147 to Rte. 54, watch for signs on
SATURDAY, APRIL 4

SALE AT 9:30 A.M.

TRUCKS

'79 Chevy - white heavy-duty with 26' Jerr Dan roll back bed, '79 Chevy
tractor - black heavy-duty with 45' Fontain drop deck trailer, like new, both
equipped with Michelin tires.

40 TRACTORS

J.D. 4020 - side console, roll guard cab; 2 J.D. 4020's - diesel; 2 J.D. 3020's
- gas; J.D. 4010 gas, all wide fronts; J.D. 3020 diesel; J.D. 720; 2 J.D. 60's; 6
J.D. 620's; 2 J.D. 630's; J.D. 50; 2 J.D. B's; Int. 826 D with cab; Int. 856
diesel; Int. 706 diesel; Int. 560 diesel; 2 Int. M's (power steering); 3 Int.
H's; Int. 504's; Int. 544; Int. Super A with 2 bottom plow, cult., corn planter,
disc harrow, mower and blade; Int. 140 with new Woods mower; Int. Super
C with mounted blade; Int. C with mounted loader; 2 Oliver 1850 diesel's
with wide fronts, Perkins motors, one with cab; J.D. 300, industrial loader
and blade, Ford 8 N; Ford N A A

BALERS - RAKES - HAYBINES - CONDITIONERS - MOWERS

N.H. baler 276; 2 N.H. 273's with throwers; N.H. 68; Oliver T 60; J.D. 24 T
and thrower; N.H. haybine 279; 2 new N.I. rakes; 2 J.D.; A.C. and Int.
rakes; 4 hay conditioners; 4 Int. and 7 J.D. mowers; several new Imco
mowers, 3 pt. and pull, 5 ft. and 6 ft.; Imco 3 pt. scoop; several Imco
blades; Cub blade; Super A blade; 2 new post hole diggers, 12 in. bit; 3 pt.
boom poles; N.I. cut conditioners; 2 Brady stalk choppers, 6 ft. and 12 ft.;
J.D. flail chopper; N.H. flail chopper; Century trailer sprayer.

HARVESTERS - PICKERS - WAGONS

Gehl 600 2 - row harvester with corn head, windrow pick-up and snapper
head (used one season), 2 Fox harv. with two heads; N.H. 717 with two
heads; N.H. corn head; Int. 16 with two heads; 3 new New Idea 323 pickers;
6 used N. 323 pickers; 2 used N.I. 2 - row pull type; 2 - row pull type with
super sheller (like new); 2 Int. M's with 2 - row mounted pickers; Int. 400
with 2 - row mt. picker; J.D. 60 with 2 - row mt. picker; 2 sheller units to fit
above units; 2 new Danco bunk wagons - 16' tandem, 12 ton chassis, 3
beater, pintle chain and roof; 2 new H & S bunk wagons 10 ton chassis 3
beater, pintle chain and roof 14'; all unload either side; 5 new bale wagons
8'x16', 8 ton chassis steel sides - can be used as feeder wagons; 2 used bale
wagons 14'x16'; used Kill Bros. wagon and bin; used Parker bin and
wagon; 5 new Parker bins - 200 bu. size mounted on new 8 ton chassis; some
wagons have adj. tongues and different size tires; 250 bu. bin on wagon;
other new wagons to be sold as chassis, some with new tires.

PLANTERS - DRILLS - SPREADERS

J.D. 1250 6 row narrow plateless; J.D. 1240 4 - row plateless; J.D. 1240 4 -
row plate; J.D. 495 4 - row plate; Ford 4 - row plate; Int. 56 4 - row plate,
like new; J.D. 247 4 - row, 3 pt.; J.D. 246 2 - row, 3 pt.; 3 J.D. 290's pull; Int.
2 - row pull; Ontario 17 disc (new grain & grass seed; no fertilizer); 2 J.D.
13 disc; Ontario 13 disc; 2 fert. sowers 10' wide; 3 new 3 pt. spin spreaders;
N.I. PTO; N.I. 12A; 2 J.D. R's; Case; new tank.

50 SETS PLOWS - MOST ALL 16"

6 bott. J.D. hyd reset on land; J.D. 4 bott hyd. reset; 3,4,5, and 6 bottom
semi-mount; J.D., Oliver, and Int.; 2,3,4 and 5 bottom pull types; Int. 4
bott. fast hitch; 2 and 3 bott. 3 pt. fully mounted; disc.

HARROWS - DISCS - CULTIVATORS

20 harrows - 8' to 16' wide, Int. and J.D.; Glenco chisel plow; 30 discs -
some real heavy duty 8' to 18' wide; Massey 3 pt. 12'; new Imco and Int. 3
pt. discs; 4 pull type discs (8' to 10' wide); Cub 1 pt. disc; cults include 2
J.D. 4 - row 3 pt.; 4 2 - row 3 pt.; Ford 4 - row front mount; Int. 4 - row front
mount; 2 Int. C's; rotary hoes and weeders (3 pt. and pull); 2 new
cultipackers, 12' with transport wheels, new 10'; used cultipackers; 5 tooth
sub-soiler

COMBINES

M.F. 300 self-propelled, cab, 13 ft. head, robot, hyd. hume reel, special
bean attach.; Gleaner E, cab with 12' head, robot, hyd. hume reel; Gleaner
E, cab with 10' head hume reel; all machines have straw choppers; 3 self-
propelled Massey 35's with 8' heads; Int. 80; Allis 90; J.D. 30; Allis 60; corn
heads.

ELEVATORS - LOADERS

5 new Zimmerman elevators (28' to 40' long); N.H. 30' pipe elev.; 2 alum.
elev.; 2 new augers; bench elevators; heavy-duty belt elev. which adjusts
to different heights and runs either direction; 10 J.D. and Int. loaders.

There will also be a truck load and a row of miscellaneous articles in the
field. If you need tractor tires, implement tires and tubes (know your size),
there will be an inventory of \$8000 new tires and lots of used ones. AT-
TENTION: This is NOT a commission sale - all one owner's equipment. A
few items may be sold before the sale and others added. There will be
loaders and men available to help load.

Terms - Cash or Good Check; Identification required for Bidder's
Numbers; Lunch at Sale. Motels within a radius of 12 to 15 miles.

STEVE McCARTY, Owner
R.D.3, Muncy, Pa. 17756
Phone: (717) 546-6133

Ralph W. Horst, C. H. Wolgemuth,
Harry Anderson, Auctioneers