

AUCTION SALE

ANTIQUES, HOUSEHOLD GOODS,
FARM MACHINERY, 22 HEAD DAIRY COWS, ETC
SATURDAY, MARCH 28, 1981
10 A.M.

Located at Landenburg, PA. Turn off Rt. 41 east of Avondale on Penn Green Road, go 3 miles south to Laurel Bridge Road. Watch for signs. Order of Sale - Household Goods, Farm Machinery, Cattle.

HOUSEHOLD GOODS

Exceptional oak S roll top desk, carved oak hall rack with mirror back, wicker chair, rocker and love seat, walnut table, clothes tree, Victorian marble top bureau with mirror, washstand, 10 pc dining room suite, spool stand, plank seat, caned and other chairs and rockers, ice box refrigerator, dishes and glassware, oil and other lamps, treadle sewing machine, beds, bureaus, stoves, collectibles, etc.

MACHINERY

Int. 574 diesel tractor, MF 150 tractor, Int. 990 haybine, JD rake, NI corn picker, Little Giant elevator, MF 3 pt. rotary mower, IH baler, 3 rt. wagons, cultipacker, NI manure spreader, 3 pt. scraper blade, JD 2 B and Int. 3 E plow, JD 2 row corn planter, grain drill, JD disc, wheelbarrow, walking plow, grindstone, corn sheller, log splitter, with 3ph, misc. hand tools, JD 110 riding mower, etc. 1974 Dodge pickup.

CATTLE, ETC.

22 head of Holstein Dairy Cows, TB and blood tested for interstate shipment, 2 Surge milk units, 2 milk buckets, approx 10 ton corn, 500 bales hay.

Terms - Cash, Traveler's or Treasure Checks.

Estate of
ERNEST K. CROSSAN, SR.

Auctioneers-Harold S. Hill and Son
215-274-8525

SPECIAL FARM MACHINERY CONSIGNMENT SALE MONDAY, APRIL 6, 1981 At 11:00 a.m.

ALLIS CHALMERS 190 XT DIESEL TRACTOR Series 3 w/duals, A.C. 5 bot Plows semi-mounted w/harrow, A.C. 13' Disc harrow, A.C. 13' Field Cultivator, A.C. 4 row rear cultivators, 16' crow foot cultipacker, 12' Athens Chisel plow, John Deere 494A Corn Planter 38" rows, John Blue 400 gal. Sprayer 40' booms (3000 Series Pump).

1972 WHITE FREIGHTLINER DIESEL TANDEM TRUCK TRACTOR (290 Cummins 13 speed), 1972 KENWORTH DIESEL TANDEM TRUCK TRACTOR (1674 CAT. 13 speed)...79 Fruehauf 32' Alum. Dump trailer, '75 ASI Gilmore Alum. Dump Trailer (32' frame, 28' Body)...

CONIGNED BY: HARRY P. JESTER, JR., (Sale at Galena, Md.)

ALSO: 1968 Int. F2000 Tandem Diesel Truck Tractor, (2) 1971 C04070 INT tandem Diesel Truck Tractors, (Wet-Lines) 1979 Hill Alum. 30' DUMP tandem trailer, 1970 White 30' steel tandem dump trailer...Chatt. 21' gang Cultipacker, 12' Brillion Cultimulcher, AC 4 row rear cultivators, AC 7x16 pull type

CONIGNED BY: RICHARD BOSTIC (Sale at Galena, Md.)

OTHER CONSIGNMENTS WILL BE ACCEPTED...FARM TRACTORS, GROUND WORKING EQUIPMENT, HARVESTERS, COMBINES, PLANTERS, DRILLS, TRUCKS, ETC...SALE ITEMS MUST BE DELIVERED TO GALENA PRIOR TO SALE DATE... HARRY RUDNICK & SONS, INC., Sales Managers & Auctioneers Galena, Md. (301) 648-5100

Public Sales Register

Closing Date - Monday, 5 00 P M
of each week's publication

SAT MAR 21 Public Sale of Power Farm Equipment, Antiques, Tools and Personal Property. Located 3 miles east of Oxford, PA E Nott Twp Rt 4721 1 mile northwest of McComseys Store (Hickory Hill) Sale by Charles H & Lois L Taylor Harry W Whiteside Auctioneer

SAT MAR 21 2 00 P M Public Sale of Valuable 45 acre Lancaster Co Farm, Rahpo Twp Located along Mastersonville Rd, 6 miles north of Manheim, PA Close to the village of Mastersonville, PA Sale by Lewis and Dorothy Sauder conducted by J Omar Landis Auction Service

SAT MAR 21 9 00 A M Spring Sale at Kempton Community Center, Kempton, PA Northern Berks Co Sale of Farm Equipment

SAT MAR 21 2 00 P M Absolute Auction of Real Estate Located East Drumore Twp, Lancaster Co travel Rt 222 1/2 mile north of Quarryville and

PUBLIC AUCTION OF FARM EQUIPMENT

MONDAY, MARCH 30, 1981
At 11:00 A.M.

Location: Take Route 422 East from Lebanon to Myerstown, at Myerstown take Route 645 North, where 645 turns right go straight on Stracks Dam Rd. to E. Stack Drive turn right to farm on right. Jackson Township, Lebanon County, Pa.

Same Panther 95

4-Wheel Drive Diesel Tractor

100 H.P., 110 hrs, like new, Dual Hydraulic Outlets Roll Guard, Front Weights, company will transfer warranty.

Ford 3000 Tractor

with Dunham Industrial Type Loader; FARMHAND FEEDMASTER 815 GRINDER MIXER; NEW HOLLAND HAYLINER 269 BALER with Model 53A Thrower; DION 16-ft. FORAGE WAGON with Tandem Axle Chassis with Adjustable Hitch and 12.5x16 Flotation Tires; Better-Bilt 8-Foot Pit Pump, PTO, with Cylinder Tractor Mount; New Idea Model 224 Tandem Axle Spreader with Hydraulic Gate; INTERNATIONAL 450 AUTOMATIC RESET 3x16 PLOW, McCurdy Gravity Bin on 10-ton Coby Chassis; J & M Gravity Bin on Chassis; John Deere 17x7 Grain Drill; International No. 56 Hopper Blower; Winco PTO 15 KW Generator on Trailer; TAYLOR WAY 5-TOOTH 3-PT. CHISEL PLOW. 2-Wheel Farm Trailer; Ford 2-Row 3-pt. Cornplanter; Ford 501 3-pt. Grass Mower; 7 foot 3-pt. Blade; Ferguson 3-pt 2-Row Cultivator; Case Side Rake; 32-Foot Bale Elevator with Motor; 10-Foot Cultmulcher; Portable Loading Chute; 4 Section Spring Harrow;

New Idea Trailer Type P.T.O. Fertilizer Spreader; 8x16 and 8x18 Flatbed Wagons with Hay Racks; John Deere Model 480 Mower Conditioner; New Holland Model 55 5-Bar Hay Rake; MARTIN 2250 GALLON LIQUID MANURE SPREADER TANK Truck Mount; Pittsburg 6-Foot Disc Harrow on Transport; Neco-Python 6"x52 PTO Transport Auger,

20 Ton Ear Corn

15 Ton Wheat Straw

5 Ton Meadow Hay - Corn Ensilage

12x60 Silo full and app. 45 Acres in trench

22-Foot Aluminum

Cattle Truck Body

with Double Deck for Hogs

1970 Ford Econoline 30 Truck

with 10-Foot Cattle Body

Cardinal 16-ft Aluminum Elevator with motor; Lincoln 225 Amp Welder; 6 Circulating Fans; 2 H.P. Portable Air Compressor; Tobacco Hoer; 16 Hole Metal Hog Feeder; 10-ft Auger with Motor; 3500 Tobacco Lath; Century 150,000 BTU Heater; Floor and Bench Vises; Dusk to Dawn Light; Chemulizer 4 Gallon Medcator; 16.9x30 Tractor Chains; Heated Hog Waterer; Hog Troughs; 10x16.5 Truck Tires, Misc. Hand Tools; Hydraulic Cylinders; Log Chains, Range Houses; Used Lumber, 6 10.00x20 Truck Tires, like new; Supplement Tank Feeder; Electric Fencers; Baler Twine; Bag Wagon; 3/4 Socket Set; Tobacco Shears; Circular Saw; Tarps; Bolts, Nuts, Washers and many other items too numerous to mention

Auction by

SAMUEL G. & MARIAN B. MUSSER

58 E. Strack Dr., Myerstown, Pa.

717-866-5912

Auction Conducted by

John E. and Paul E. Martin,

Auctioneers

717-733-3511 - 717-733-3305

Ephrata, Pa.

Food at Auction

turn left onto Oak Bottom Rd. 1/2 miles turn right on Shady Lane to house on right Henry B and Mary B Fisher Owners Randall V Kline and Lloyd H Kreider Auctioneers

SAT MAR 21 - 10 A M Public Auction of Real Estate consisting of 2 1/2 story home & barn, household supplies, antiques, automobile, etc Located at 164 N Main St, Reamstown, Pa Auction for Lena L Brubaker Auctioneers Paul Landis, Ephrata & Roy Good, Jr., Denver

SAT MAR 21 10 00 A M Public Sale of Farm Equipment Real Estate and Household Located Rd 1 Bloomsburg, (Jersey town), off Rt 254 west of Millville or Rt 642 east of Danville, PA Florence G & Leon L Zeislof Owners John Autotore and John Jr Auctioneers

SAT MAR 21 - 11 00 A M Public Sale of Recreational Business Property and Inventory Located at Fisherman's Wharf, off Rt 411 about 15 minutes south of Harrisburg, PA, next to Falmouth Access area in Conoy Twp along Susquehanna River near Bainbridge Auctioneer Ron Funk

SAT MARCH 21 - 9 30 A M Public Sale of Woodworking Tools, Equipment & Household Antiques Located 1 mile East of Nicholmies, 4 miles West of Christiana Take Rt 372 to White Oak Rd, go to Old Dam Rd, turn South on Old Dam Rd past Petersheim Store to first farm on left Lancaster Co, Pa Terms by Mrs Enos S (Sadie) Petersheim Auctioneers Leon Kurtz, Apprentice Auctioneer J Omar Stoltzfus

SAT MAR 21 - Public Sale of 46 acre farm with 12 chicken houses and pig space Located 1/2 mile north of Rawlinsville adjacent to Eshbachs Bus Station Terms by Carroll Herr Everett Kreider and Steve Petersheim Auctioneers

SAT MAR 21 - Public Sale of Farm Equipment Tools, Etc Located 1 1/2 miles south of Wernersville, PA Harry J Boyer Estate Paul E Bixler and Gerald G Kramer Auctioneers

SAT MAR 21 - 1 00 P M Public Sale of Machinery, Household and Antiques Located in E Nott Twp, Chester Co, PA 3 miles SE of Oxford, PA on Rt 472, 1/2 mile from Hickory Hill Store, 24 miles from West Chester, 26 S of Lancaster, PA, 14 from Newark, DE Sale by Charles H & Lois P Taylor Harry Whiteside Auctioneer

SAT MAR 21 - Public Sale of 110 Guernseys Pa Golden Anniversary Sale Held at the Guernsey Sales Pavilion, 6 miles east of Lancaster, PA on Rt 30 East Sale by PA Guernsey Breeders' Assoc John B Merryman Auctioneer

SAT MAR 21 - 10 30 A M Public Sale of Farm Equipment Located in Cumberland Co along Rt 22 about midway between Carlisle and Ship pensburg, 2 1/4 miles east of Cumberland Drive in Fred G Chestnut Owner Art Rife Auctioneer

TUES MAR 24 10 00 A M Public Sale of Farm Machinery and Household Goods Located from Honey Brook, take N Broad St approx 1 block to Homestead Rd, turn left to sale Sale by Paul W and Jeanne Given Owners, Elton and Alvin Horning Auctioneers

TUES MAR 24 10 00 A M Public Sale of Farm Machinery, Skid Loader, Trucks, Grain Dryer, Straw Located 6 1/2 miles east of Hamburg, turn south on Rt 143 to 5th blacktop Rd, turn right toward Windsor Castle, Berks Co, PA Carl Miller Owner Ralph Zettlemoyer Auction Co

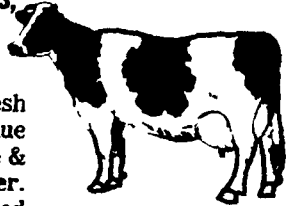
MARJI FARMS DISPERSAL (Potter Co.)

TUESDAY, MARCH 24, 1981
At 11:00 A.M.

Located: 2 mi. south of Ulysses, Pa., on Loucks Mills Road; watch for arrows Rt. 49 intersection in Ulysses or Rt. 6 intersection at West Pike 5 mi. west of Galeton.

89 HEAD GRADE 89

62 Mature Holsteins,
2 Jerseys,
1 Guernsey



14 just fresh, 19 fresh & just bred back, 7 due in Apr., 12 due June & July, bal are later. Some good uddered young home raised cows that are milking good. 18 yrling hfrs., 6 started hfr. calves. All preg. ck., Vacc. for shipping fever, health charts.

MACHINERY

Case 970 D, WF, new rubber; Int. 656 D, WF; J D. 38 chopper w/36" 2-row corn & pick up head, 244 snapping head - used 100 A.; J D. 1209 haybine; J.D. 40 spreader w/hyd. gate - used 1 season; Gehl 99 blower-filled 2 silos; Pittsburg 12' transport disc; Hesston 3 pt. h. stack carrier; Dunham front loader; Walsh 300 gal. fiberglass tank; Case 5-16 semi-mounted side hill power plows; Int. 16-7 disc drill; Oliver 3-16 trailer plows; J.D. blower; Noble 16' 3 pt. h. viber shank; J.D. 24-T baler; 2 flatbed wgn.; J.D. 400 corn planter; Int. rake; J.D. 110, Gehl, Dion silage wgn.; tractor chains; harrow.

PRODUCE

15' haylage 18x60; 45' corn & haylage 18x60; 36' corn & haylage 16x50 w/unloading privilege; seed corn tested 1/81 10 bu. Doeblers Flint Dent; 5 bu. 250-3, 5 bu. 30X, 4 bu. Sudex. Terms: Cash or good check

MR. & MRS. JAMES SMITH, Owners

For information call Jerry Pirrung, Ulysses, Pa. 814-848-7421 or Robert Shaylor, Troy, Pa. 717-297-3278

Mgrs. & Auctioneers

Robert M. Shaylor Sales
515 Elmira St., Troy, Pa. - 717-297-3278
Reputable Sales Service
Licensed - Bonded

MARDALE DISPERSAL VENICE CENTER, N.Y.

2 DAY
DAIRY AUCTION
MARCH 27th & 28th
10 A.M.

Due to a farm accident & other business we have been comm. to sell the complete milking herd & bred hfrs. at the farm located on Stewarts Crs. Rd. just off Rt. 34 between Ithaca & Auburn. Take Rt. 90 east at Genoa or Long Rd. east at Venice Center to Stewarts Crs. Rd. 25 miles west of Cortland. Red Arrows.

339 TOP HOLSTEINS 339

Inc. 258 outstanding cows "last yearly herd ave. 20,115M & 653F." with #84 ind. record to 40,063M 3.4% 1494F in overtime in 2 yrs. 1 mo. of age. 6 more over 1,000 Fat inc. #372 3 yr. 315 da. 25,864M 4% 1048F & fresh again at 3-11. A few Reg. inc. #42 an Astronaut with 3-10 376 22,249M 4.1% 922F. Don't miss #226 Comet daug. with 2-1 335 22,230M 4.3% 947F. Be sure to look for #18-32-44-65-135-161-212-219-243-321-346-462-485 & at least 200 others. 30 cows have over 24,000M & 20 with over 900F. Also 20 spr. hfrs. & 61 hfrs. due May thru fall. This dairy is not pampered & shows the results of 20 yrs. breeding to the top sires in ABS, Curtiss & Eastern plus 2 sons of Astro Boots & a top bull from Pachens. Service sires include Bootnick, Moneymaker, Cavalier, Neil, Gem, Character, Galaxy & other top surs Preg Ck. by Dr. Sears & all have proper shots. At least half are VIP grades.

AUCT'S NOTE: The barn has been leased out so everything goes. This is your opportunity to buy what may be the top producing dairy in the state with over 200 cows at your own price. The 27th we will sell cows as they come from free stalls "No Selections." The 28th bal. of cows & bred hfrs. Be on time & Bid last. Catalogs on request or at ringside.

TERMS: CASH OR CK. W/ID.

LG. HEATED TENT.

SPECIAL - 1 ample of Pawnee Farm Arlunda Chief Semen & 8 ampules of Poverty Hollow Burkgov Demand to be sold at 1 p.m. 27th.

LUNCH BY THE

GENOA FIREMAN'S AUX.

Owners
DALE & MARGARET PARMLEY

Managed by Central Livestock
Boyd A. Resseguie, Auct
Ph. Tully 315-696-8446